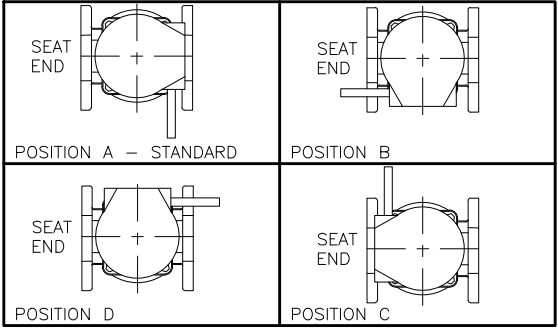
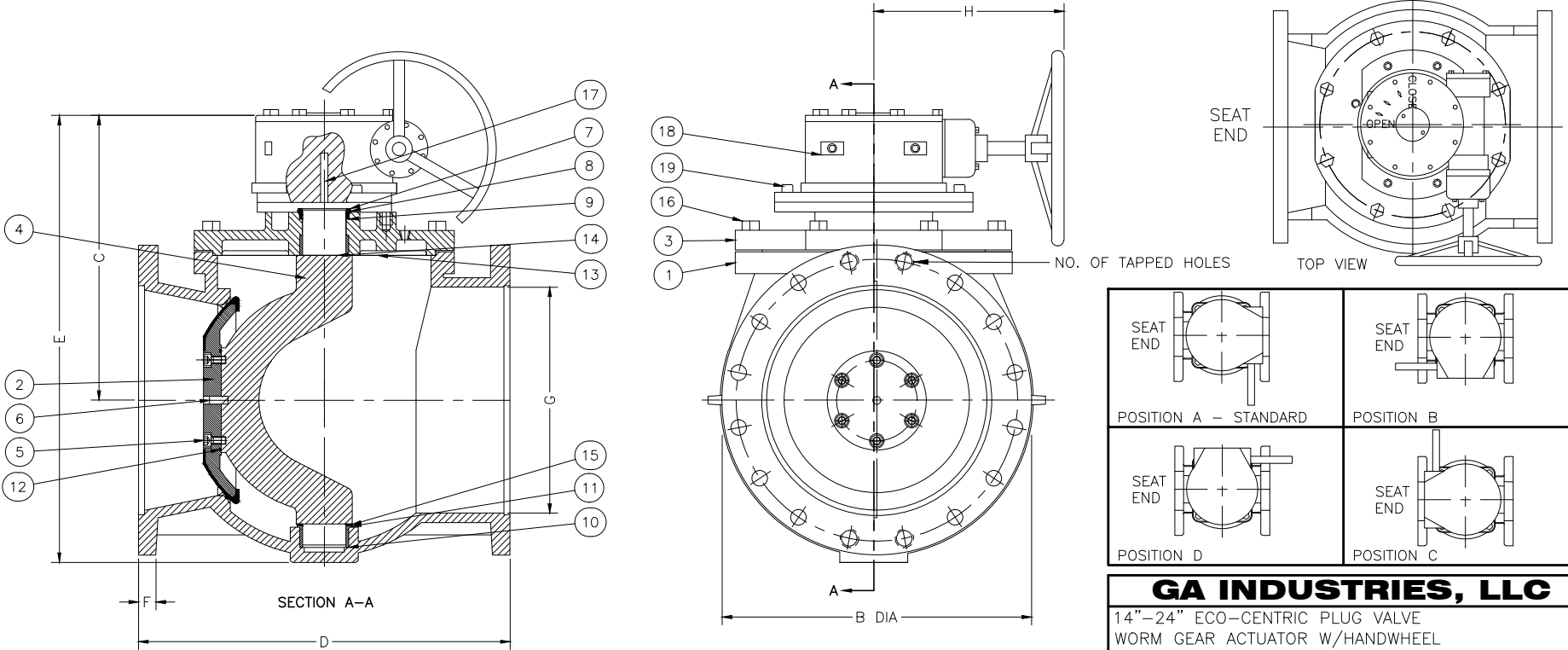


VALVE DIMENSIONS																
SIZE	B		C		D		E		F		G		H		NO. OF TAPPED HOLES	WEIGHT IN LBS.
	IN.	MM	IN.	MM	IN.	MM	IN.	MM	IN.	MM	IN.	MM	IN.	MM		
14"	21.02	534	21.45	545	17.00	432	30.83	783	1.38	35	13.98	355	15.35	390	4	817
16"	23.50	597	22.05	560	17.75	451	34.80	884	1.44	37	16.14	410	15.35	390	4	1008
18"	25.00	635	22.04	560	30.00	762	34.80	884	1.57	40	17.99	457	15.35	390	0	1313
20"	27.52	699	22.91	582	36.00	914	39.64	1007	1.69	43	20.08	510	17.72	450	4	2061
24"	32.01	813	22.91	582	42.00	1067	40.94	1040	1.90	48	24.21	615	18.90	480	0	2258

- NOTES:
 1. FLANGE DRILLING PER ANSI B16.1 CLASS 125
 2. IN COMPLIANCE WITH AWWA C517
 3. COLD WORKING PRESSURE: 150 PSI
 4. HYDROSTATIC TEST PRESSURE: 225 PSI
 5. ACTUATOR SUPPLIED IN POSITION A UNLESS SPECIFIED OTHERWISE

PARTS LIST	
ITEM NO.	DESCRIPTION
1	BODY
2	PLUG
3	COVER
4	STEM
5	STEM SCREWS
6	STEM PIN
7	RETAINING RING
8	THRUST RACE
9	U-CUP SEAL
10	BEARING
11	PACKING
12	STEM O-RING
13	COVER O-RING
14	COVER STEM SHIM
15	BODY STEM SHIM
16	COVER BOLTS
17	KEY
18	GEAR ACTUATOR
19	GEAR ACTUATOR BOLTS



GA INDUSTRIES, LLC

14"-24" ECO-CENTRIC PLUG VALVE
 WORM GEAR ACTUATOR W/HANDWHEEL
 ANSI 125 LB FLANGES

STANDARD TOLERANCES (UNLESS OTHERWISE NOTED) FINISHED SURFACES ONLY DIMENSIONS SHOWN IN INCHES .x = ±.02 .xx = ±.01 .xxx = ±.002 FRACTIONS 31/64" ANGLES 1/4" FINISH 0- XX RMS	SERIAL NO. *	SCALE N.T.S.	DRAWN BY HGM
	REFERENCES *	EFFECTIVE DATE 07-17-2009 TO	APPR. BY JT
	FIG. NUMBER 517	FILE PL	DRAWING NO. PL-1005
			REV. A

REV.	DESCRIPTION	DATE	BY
A	ADDED WEIGHTS, CHANGED NOTE & SWITCHED ITEMS 2 & 4	03-24-2010	RJT

J:\AUTOCAD\PLUG\SHOW\PL-1005-A.DWG