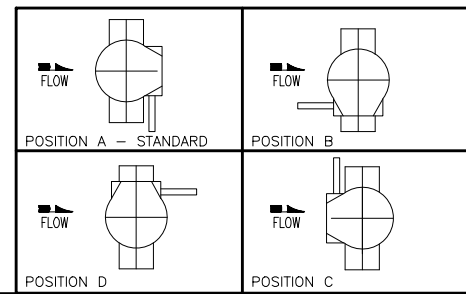
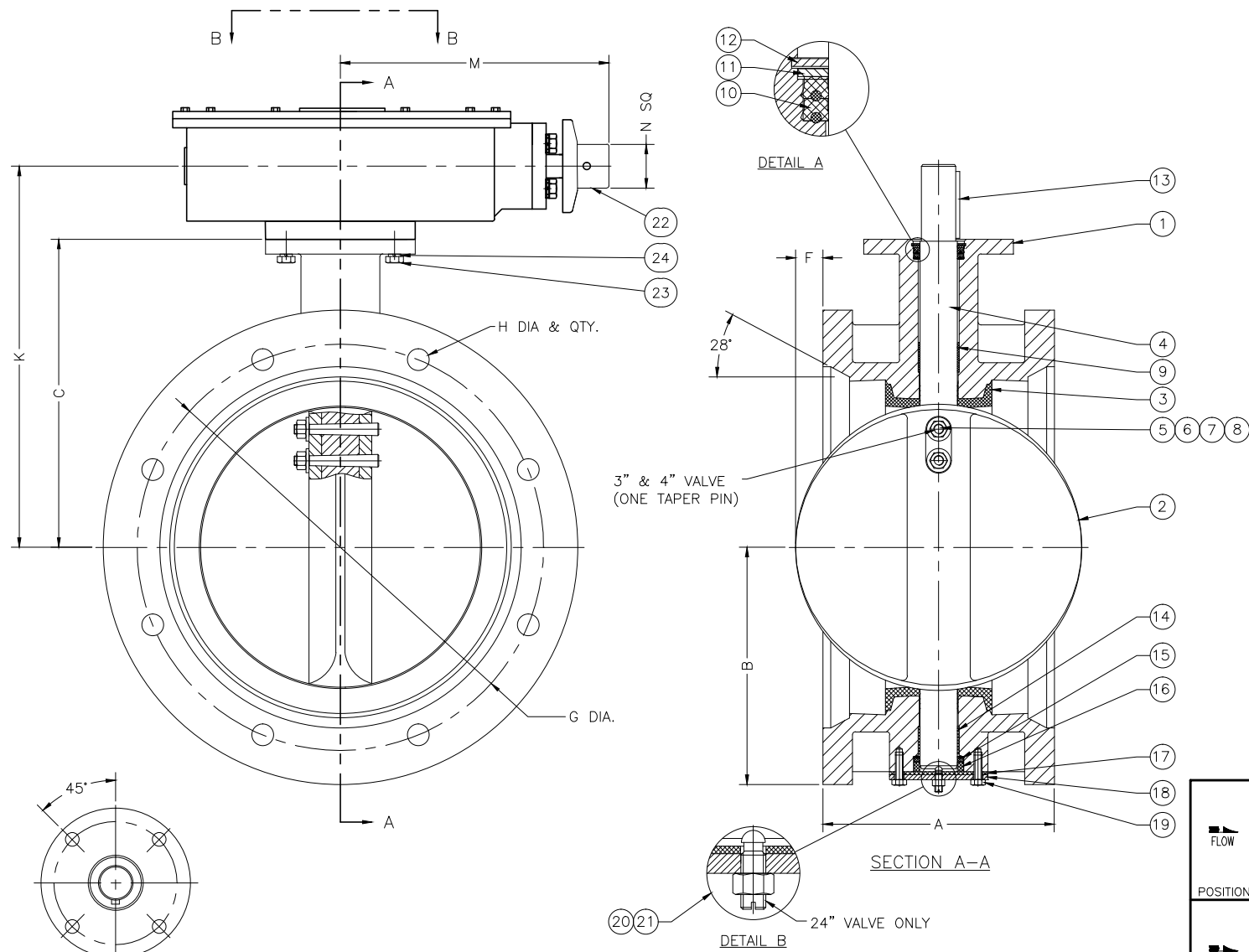


PARTS LIST	
NO.	NAME
1	BODY
2	DISC
3	SEAT
4	SHAFT
5	TAPER PIN
6	NUT
7	WASHER
8	SEAL
9	UPPER BEARING
10	UPPER SHAFT PACKING
11	UPPER PACKING WASHER
12	RETAINER
13	KEY
14	LOWER BEARING
15	LOWER SHAFT PACKING
16	LOWER PACKING WASHER
17	GASKET
18	BOTTOM COVER
19	CAP SCREW
20	CENTERING SCREW
21	LOCK NUT
22	TRAVELING NUT ACTUATOR
23	ACTUATOR SCREWS
24	ACTUATOR WASHERS



24"	13.25	17.12	22.50	5.37	30.00	16-φ7/8	26.46	14.41	2.00	FA16	574
20"	12.50	14.62	18.00	3.75	25.50	14-φ7/8	22.00	14.41	2.00	FA16	455
18"	12.25	13.00	16.50	2.87	23.25	12-φ7/8	20.48	14.41	2.00	FA16	373
16"	12	12.31	15.00	2.00	21.00	12-φ7/8	18.98	14.41	2.00	FA16	305
14"	11.50	10.56	14.00	1.25	18.75	10-φ7/8	16.91	14.25	2.00	FA12	257
12"	9.25	9.50	12.31	1.37	16.25	8-φ7/8	15.21	14.25	2.00	FA12	168
10"	9.25	8.06	10.75	.375	14.00	8-φ7/8	13.45	8.86	2.00	FA12	133
8"	8.50	6.75	9.50	—	11.75	6-φ7/8	12.19	8.86	2.00	FA12	97
6"	8.50	5.88	8.00	—	9.50	6-φ7/8	10.65	8.86	2.00	FA12	74
4"	8.50	4.50	7.00	—	7.50	4-φ7/8	9.67	8.86	2.00	FA07	59
3"	8.50	3.75	6.25	—	6.19	4-φ3/4	8.92	8.86	2.00	FA07	35
SIZE	A	B	C	F (TYP.)	φG	#-φH	K	M	φN	MTG.	WGT.

TECHNICAL REQUIREMENTS:
 1. DESIGN STANDARD, AWWA C504
 2. DIMENSIONS IN INCHES, WEIGHT IN POUNDS, DOES NOT INCLUDE ACTUATOR.
 3. WORKING PRESSURE 150 PSI
 4. SHAFT DIAMETER AND BODY WALL THICKNESS PER AWWA C504.

REV.	DESCRIPTION	DATE	BY

GA INDUSTRIES, LLC.

3"-24" MECHANICAL JOINT BUTTERFLY VALVE
 W/BURIED SERVICE TRAVELING NUT ACTUATOR

SERIAL NO.	SCALE	DRAWN BY	
	N.T.S.	HGM	
REFERENCES	EFFECTIVE DATE	APPR. BY	
	10-02-2009 TO	JT	
FIG. NUMBER	FILE	DRAWING NO.	REV.
804	BF	BF-1019	

STANDARD TOLERANCES (UNLESS OTHERWISE NOTED)
 FINISHED SURFACES ONLY
 DIMENSIONS SHOWN IN INCHES
 .125 = ±.010
 .375 = ±.007
 .625 = ±.005
 .875 = ±.004
 1.000 = ±.003
 FRACTIONS ±1/64"
 ANGLES ±1°
 FINISH: φ - XX RMS

J:\BUTTERFLY\BF-SHOW\BF-1019.DWG