



Collaboration Apps

with PTC Navigate

Today's challenging global environment demands effective collaboration. With DRIVEN-4 Collaboration Apps you can securely harness the talents and energy of entire team, inside or outside of your firewall. It provides role-based data access to stakeholders, ensuring they see only what they are authorized to see.



Project Tracking App

Project Tracking App was created as global common database, process and communication platform for tracking projects, tasks and issues. Using a custom ThingWorx user interface With Windchill as backbone it provided ability to collaborate well between the projects teams, link product information, view CAD thumbnails, perform mark-ups, submit changes and easy access to issues and tasks. It also helps monitor project dates for all capital items that are not meeting their targeted dates and then can generate notifications and alerts.



Project Tracking App provides



Quick project start with predefined standard project templates.



Intuitive project dashboard - Simple, easy access to program status, project information and activity tracking.



Create and track projects, project activities, milestones, tasks and issues.



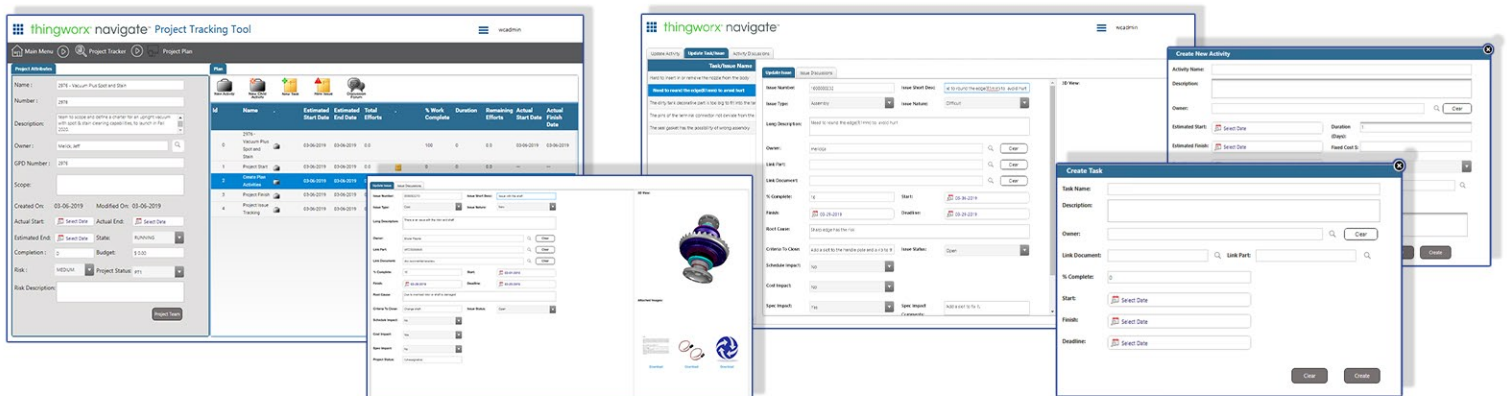
Discussion forum – collaborate across multi teams, discuss resolutions, record all inputs and tag it to tasks/ issues.

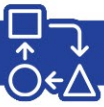


Issue tracker – access all issues for status, resolutions, risks, schedule impacts and cost impacts.



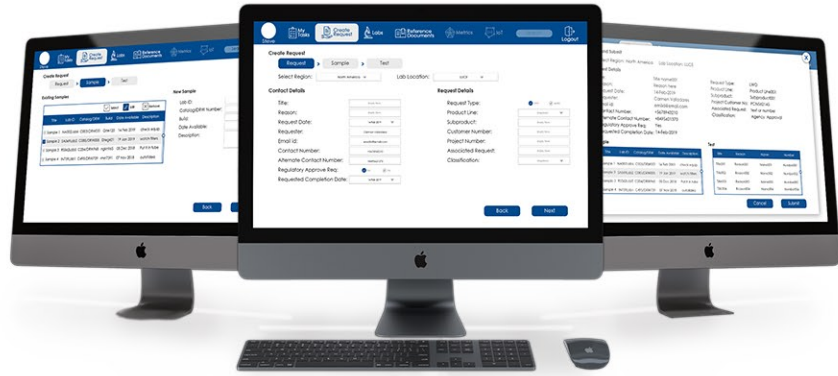
Notification and alerts – highlight due dates, high-risk items, monitor cost impacts and sends alerts





Smart Connected Labs App

Smart Connected Lab App is a lab request and tracking system which is smartly connected to lab equipment and lab resources. This enables engineering teams to collaborate well with testers and equipment to get real time test data. It is connected with Windchill for production information, test procedures, lab request workflow. This app gets smart with PTC's **Keypare** and ThingWorx Asset Advisor connecting with lab equipment.



Smart Connected Labs App provides



Collaboration between engineering team and lab team



Creation and tracking of lab requests and model shop requests



Connects product information with lab results



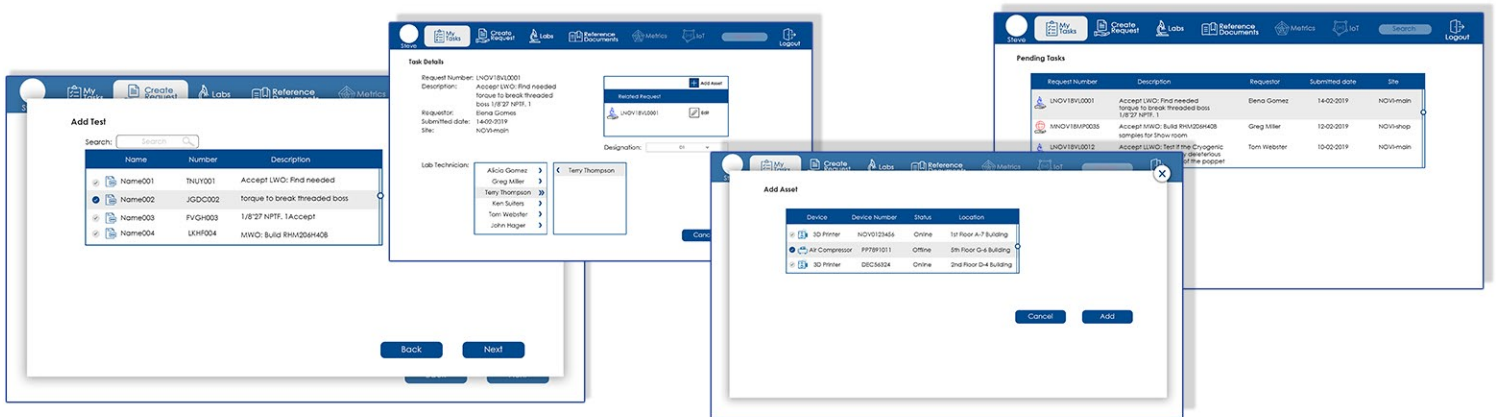
Monitor lab equipment like 3d printers, compressors, and sensor data to provide **real-time information** to test requestor



Start lab request workflow process, **assign** resources, **schedule** and complete tasks



Maintain all historical **test results** with the parts and assemblies



DRIVEN-4

info@driven-4.com
269-281-7567
www.driven-4.com