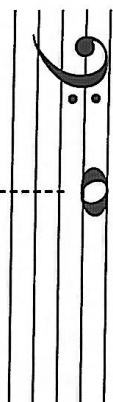
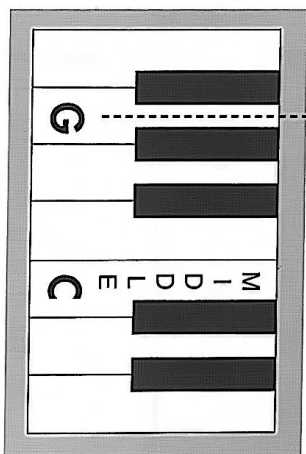


# Bass Clef G



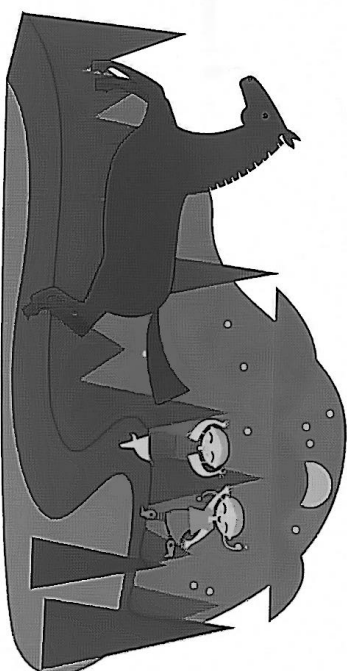
G sits on the top space just below top line A.  
Your teacher will play a rhythm on **bass clef G**.  
Copy it back! Then reverse.



**Tip from Millie and Marta:**  
On the **closed key cover**, tap and count the rhythm with your teacher. Be sure to tap with the correct hand!



## Gallop, Pony



Quickly 3 on \_\_\_? 1 on \_\_\_?

*f* Gal - lop, po - ny, gal - lop, po - ny, un - der - neath the stars.  
Gal - lop, po - ny, gal - lop, po - ny, you have trav - elled far.

2 on \_\_\_? Think: \_\_\_ is the top line?



Teacher Duets: (Student plays 1 octave higher.)

R.H. L.H. *mf*

1. 2.

9 3

*p* Run, (2 - 3) my po - ny, run, (2 - 3) my po - ny.

1

13

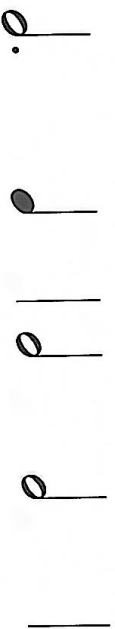
*f* Gal - lop, po - ny, gal - lop, po - ny, un - der - neath the stars.

2

*slowing down*



Find and circle this **rhythm pattern**:  
Hint: It occurs two times.



9

*pp* 3

13

*mf*

5

*rit.* 4

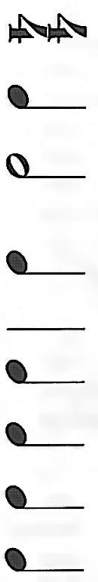
3

5

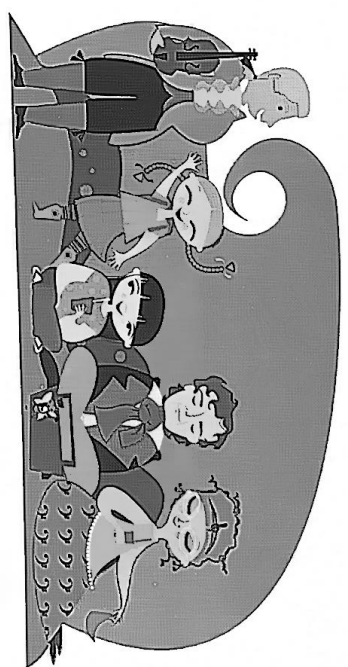
Tips from Mrs. Razzle-Dazzle:

1. First, imitate this rhythm.

Your teacher will tap it on the  
• piano lid • bench • door



2. Play, keeping your hands round as apples.



# Picnic with Friends

## C 5-Finger Scale

Bright tempo

Traditional words

--	--

1 Think: A is the top line. Step down to \_\_\_\_\_ ?



Teacher Duett: (Student plays 1 octave higher.)

--	--

--	--

5

I'm glad that	earth is paint - ed	green, shout	green, hoo -	green. ray!
---------------	---------------------	--------------	--------------	-------------

9

I'm glad wel -	there's come	such a lot of	nice love	fresh to	air. play.
----------------	--------------	---------------	-----------	----------	------------

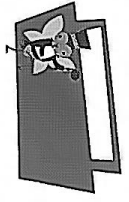
13

<i>f</i> I'm glad I'm	we're my	sand - wiced	are here	be to -	tween. stay!	<i>p</i>
-----------------------	----------	--------------	----------	---------	--------------	----------

Lift L.H. down  $\frac{1}{5}$  to C-G.



Tell your teacher what a **step** is on the keyboard and on the staff.  
Then point out 3 measures that step in this piece.



Can you find Tap at the picnic?