



NEW!
HELD FIFTHS

Color in one lettered box each time you practice a line of music.
After all of the boxes are colored, you will be one AMAZING piano player.

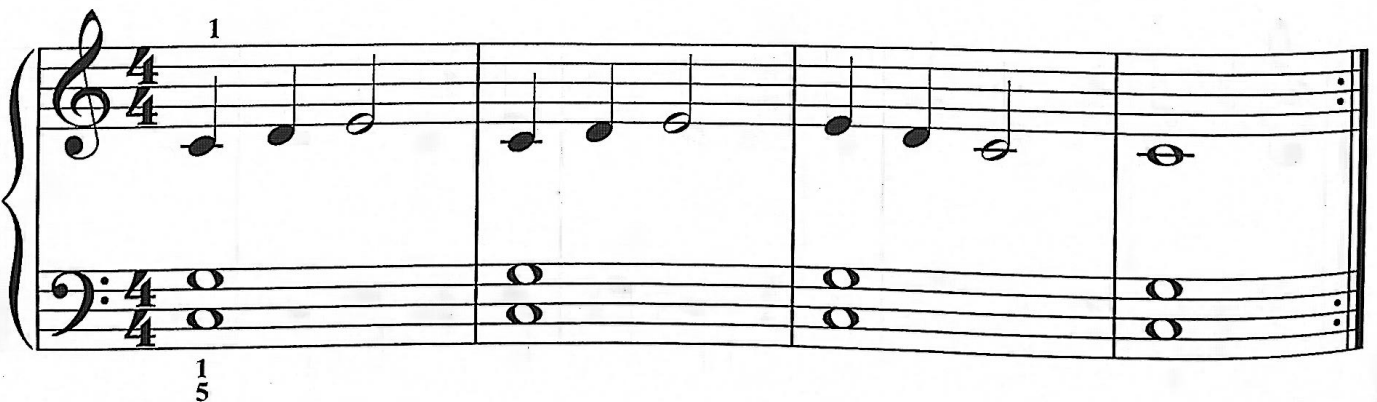
SWITCH UP

A M A Z I N G



STAY AND AWAY

A W E S O M E



OUT AND BACK

W	I	N	N	I	N	G
---	---	---	---	---	---	---

Musical score for 'OUT AND BACK' in 4/4 time. The piece consists of four measures. The melody in the treble clef starts on middle C (C4), moves up stepwise to G4 (half note), then descends stepwise to C4 (half note). The bass clef accompaniment consists of two whole notes per measure: C3 (first measure), F2 (second measure), G2 (third measure), and F2 (fourth measure). A first ending bracket is placed over the final two measures of the melody.

 $\frac{1}{5}$

BELL HOP

P	E	R	F	E	C	T
---	---	---	---	---	---	---

Musical score for 'BELL HOP' in 4/4 time. The piece consists of four measures. The melody in the treble clef starts on middle C (C4), moves up stepwise to G4 (half note), then descends stepwise to C4 (half note). The bass clef accompaniment consists of two whole notes per measure: C3 (first measure), F2 (second measure), G2 (third measure), and F2 (fourth measure). A first ending bracket is placed over the final two measures of the melody.

 $\frac{1}{5}$

ROLLOVER

S	T	E	L	L	A	R
---	---	---	---	---	---	---

Musical score for 'ROLLOVER' in 4/4 time. The piece consists of four measures. The melody in the treble clef starts on G4 (half note), moves down stepwise to C4 (half note). The bass clef accompaniment consists of two whole notes per measure: C3 (first measure), F2 (second measure), G2 (third measure), and F2 (fourth measure). A first ending bracket is placed over the final two measures of the melody.

 $\frac{1}{5}$

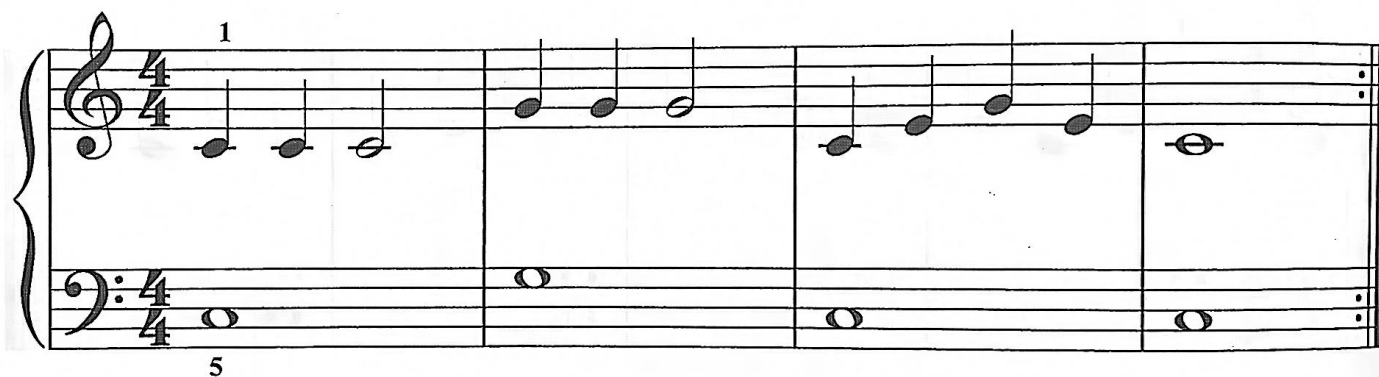


NEW!
HELD WHOLE NOTES

Color in one lettered box each time you practice a line of music.
After all of the boxes are colored, you will be one PERFECT piano player.

TOP HOP

P E R F E C T



SIDE SWING

A M A Z I N G



REBOUND

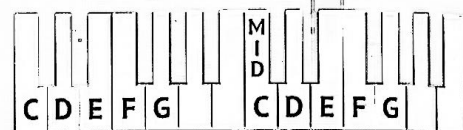
A musical score for the song "The Rose Tree". The score is written for a piano, with a treble and bass staff. The key signature is one flat (B-flat), and the time signature is 4/4. The melody is in the treble staff, and the bass staff provides a simple harmonic accompaniment. The melody consists of a series of eighth and quarter notes, with a final measure containing a whole note. The bass staff features a simple accompaniment of quarter and half notes. The score is divided into four measures, with a double bar line at the end of the fourth measure. The title "The Rose Tree" is written in a decorative font at the top of the page.

BOUNCE PASS

A musical score for the song 'The Rose Tree'. The score is written for a single melodic line on a treble clef staff and a single bass line on a bass clef staff. The time signature is 4/4. The key signature is one flat (B-flat). The melody is marked with a '1' above the first measure and a '5' below the first measure. The melody consists of a series of eighth and quarter notes, with a final measure containing a double bar line and repeat dots. The bass line consists of a single half note in the first measure, followed by a series of quarter notes, and a final measure containing a double bar line and repeat dots.



CHALLENGE SET



The following contrary motion exercises are intended for older beginners and students who want to test their skills.

SIDE BY SIDE

A W E S O M E



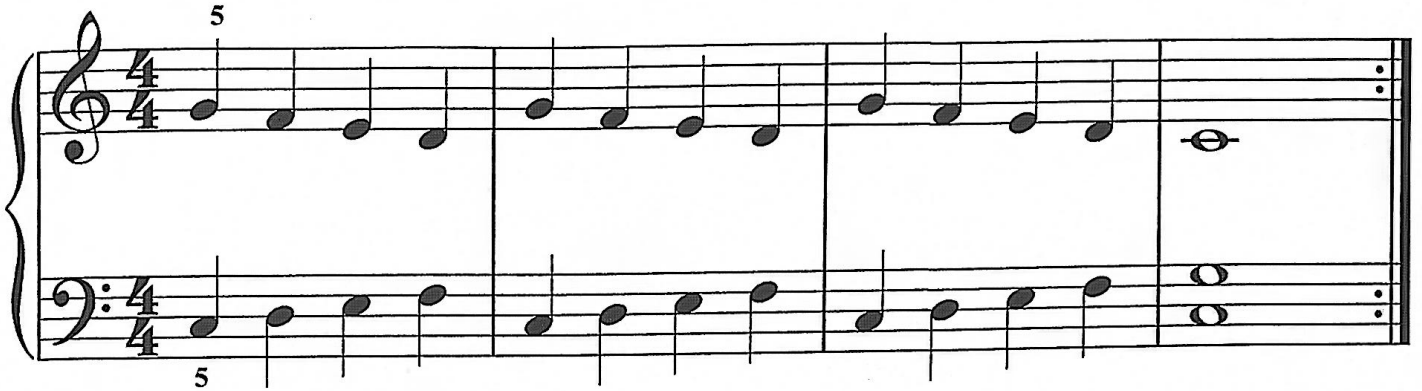
POWER DOWN

S T E L L A R



HURDLE HOPS

W I N N I N G



WOODCHOP

P E R F E C T



DOUBLE NO TROUBLE

A M A Z I N G

