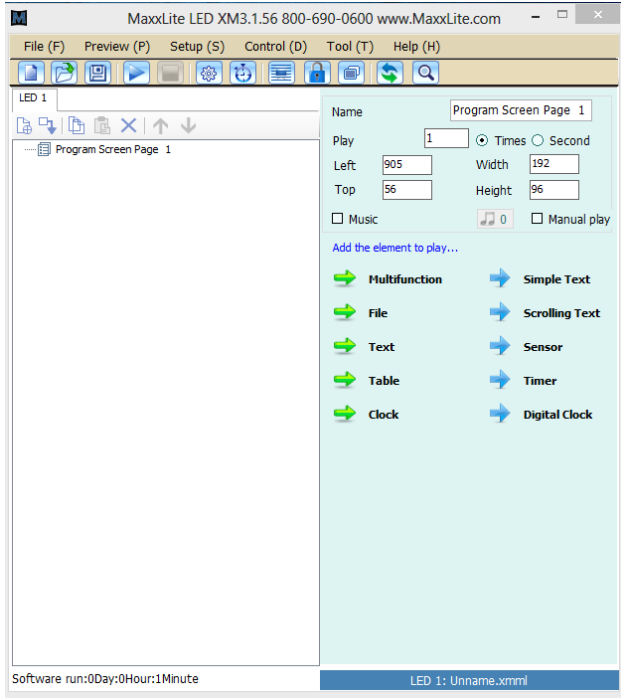


Double click on the MaxxLite Playlist Program to get started

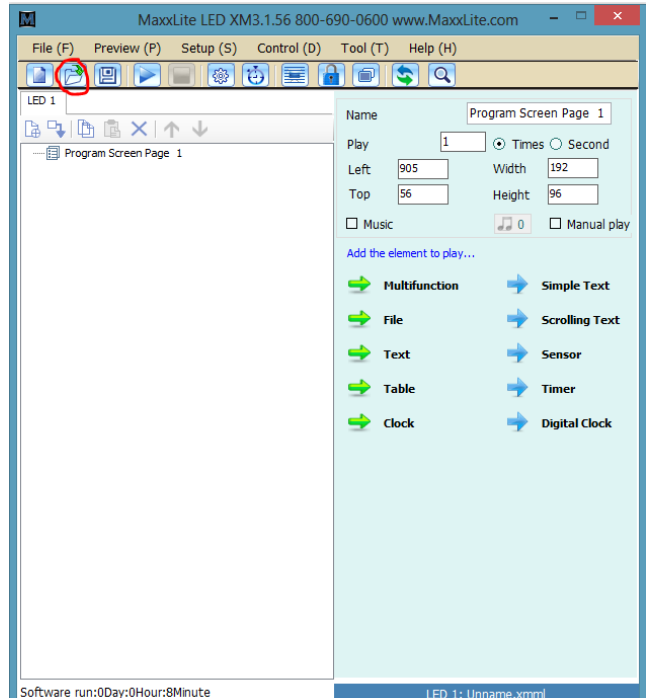
### Step 1

This is a view of the playlist program interface:



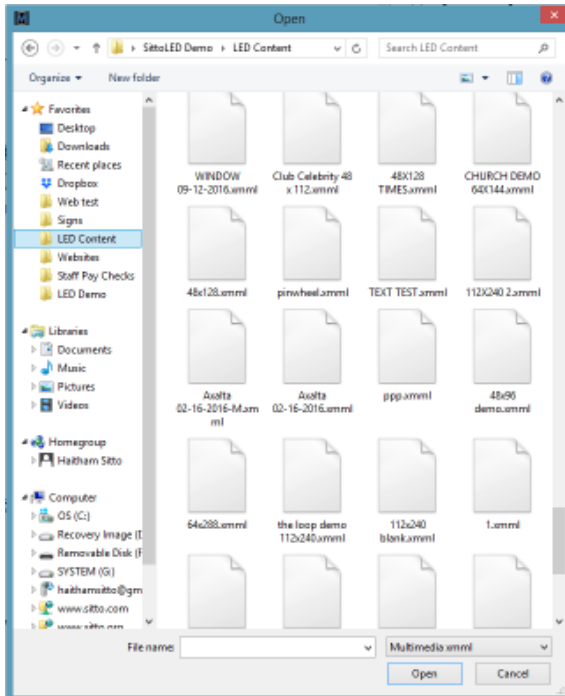
### Step 2

Start by clicking on the folder icon to open an existing playlist



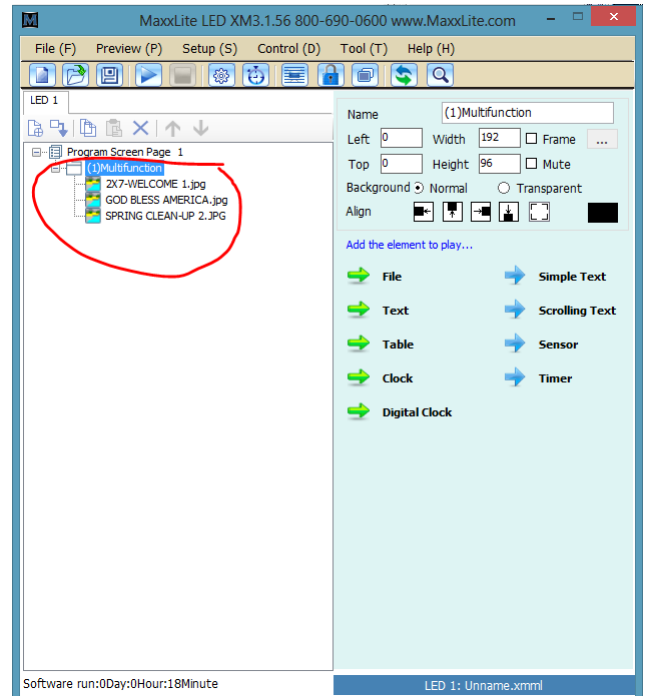
### Step 3

From the Open folder, select the playlist you need



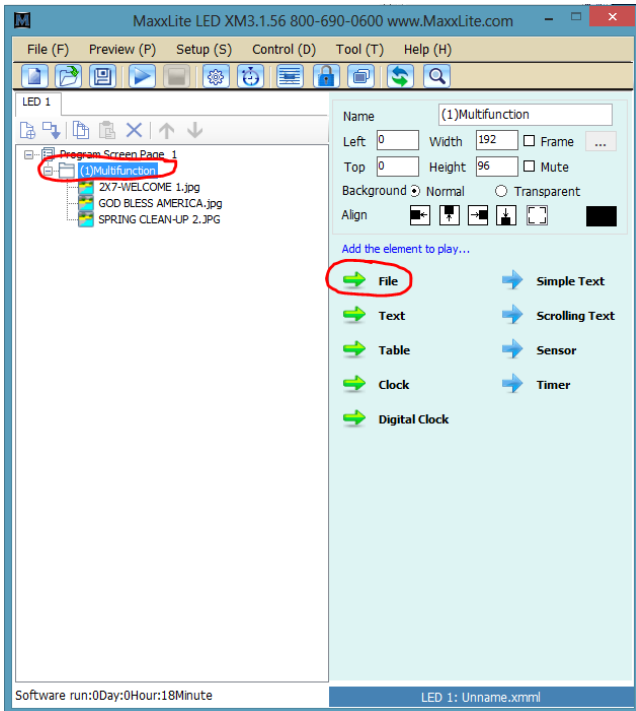
### Step 4

Playlist will open showing "Multifunction" & your list of content



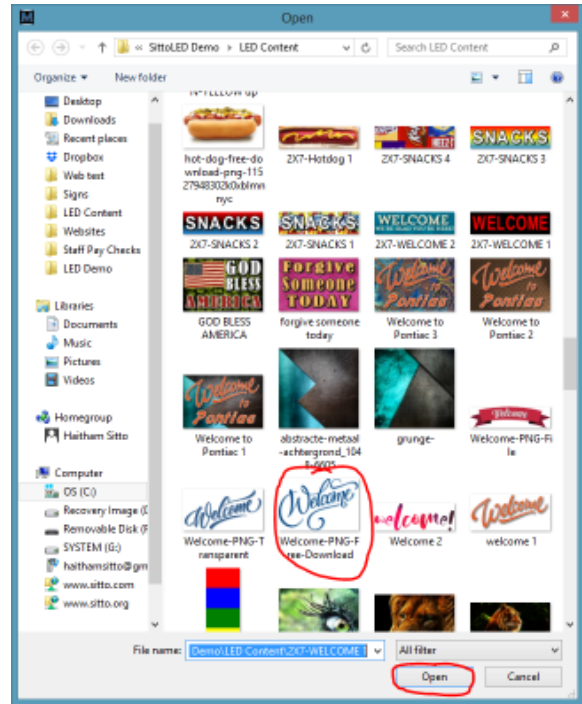
## Step 5

Adding content, click on "Multifunction" then "File".



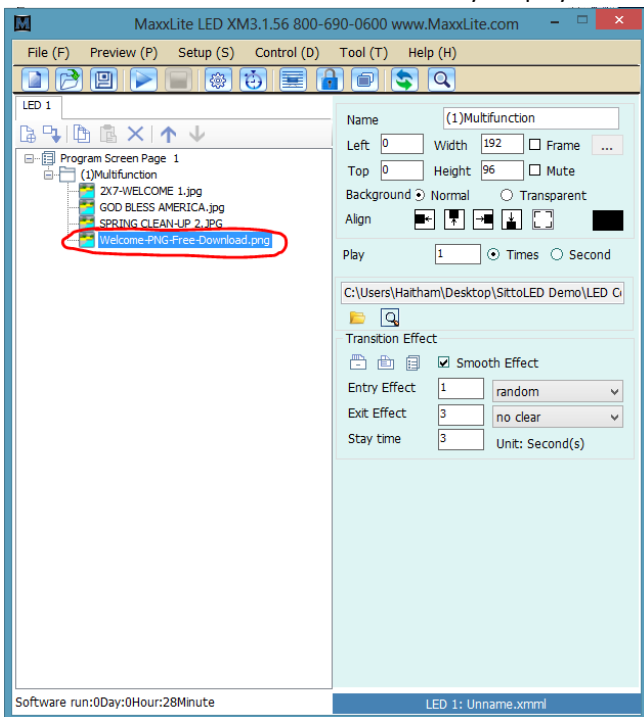
## Step 6

Select content from the open folder & click on open to import.



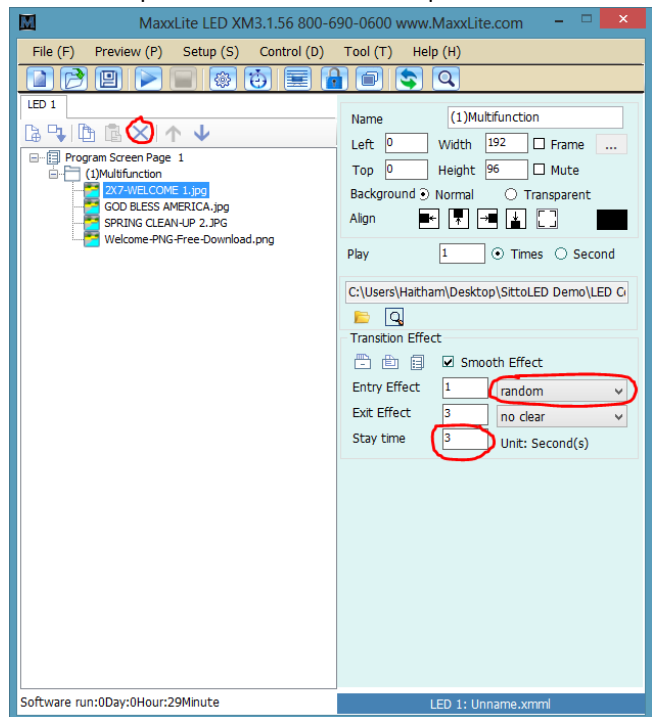
## Step 7

Your new content will be listed within your playlist



## Step 8

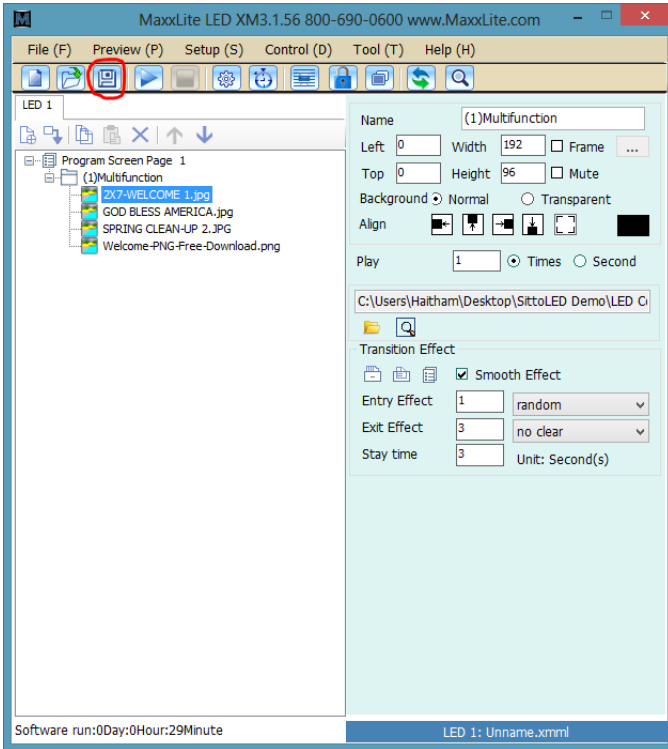
Add unique characteristics to each piece of content.



Click on a content and you will be able to adjust the stay time (length the image will stay on the screen), the Entry Effect, or remove a content from your playlist

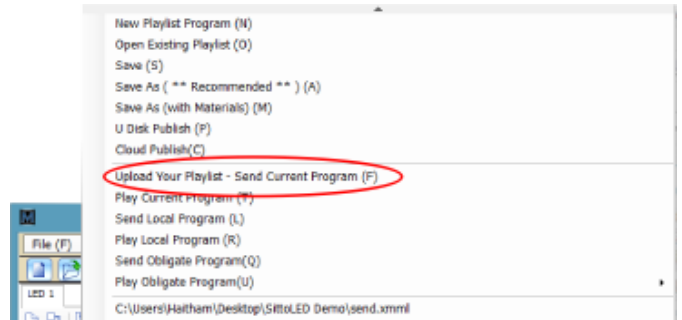
## Step 9

To Save, Click the Save icon or click on File then Save or Save As



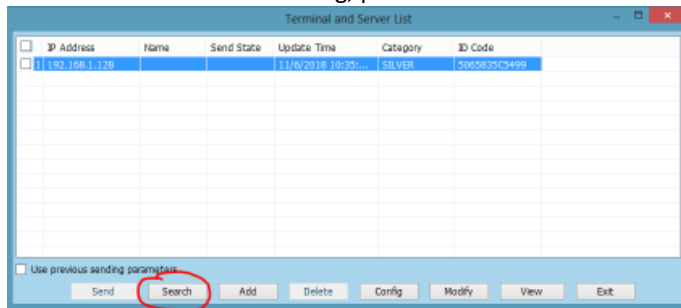
## Step 10

uploading your playlist, click File, click "Upload Your Playlist"



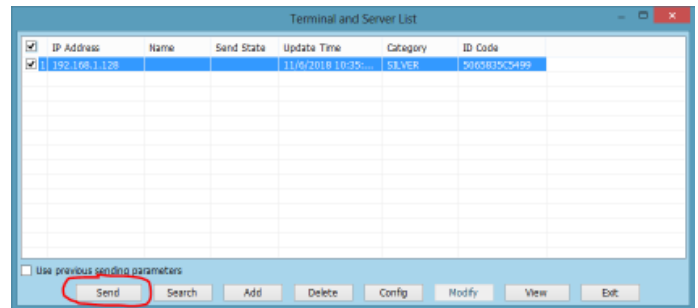
## Step 11

From the Terminal box, find your display IP address.  
If IP is not showing, perform a search.



## Step 12

Check box next to your IP address and click on Send.



## Step 13

Verify storage area and click on OK to complete upload

