

Fall 2020

Historic Highway 41
Gardens

20 Year Anniversary

Implemented Project:
Victory Over Violence

Schoolyard
Redevelopment

Online Villard Avenue
Charette

Mayor's 2020 Awards



Community Design Solutions

On The Boards

Above: Historic Highway 41 gardens entrance

What are we up to?

"On the Boards" newsletter features a quick overview of CDS projects, activities, and how we are working with local residents, leaders, and neighborhoods.

What is CDS?

Community Design Solutions (CDS) is a funded design center in SARUP that assists communities, agencies, civic groups, and campuses throughout Wisconsin. CDS provides preliminary design and planning services to underserved communities and agencies. Students from SARUP work with Director Carolyn Esswein, clients, and faculty to develop concepts that promote positive change, stimulate funding opportunities, and serve as a catalyst for continued investment.

Contact Info

Director, Carolyn Esswein
cesswein@uwm.edu
414.977.7744
www.uwm.edu/cds

Historic Highway 41 Gardens

Client: S 27th Street Business Association

The S 27th Street Business Association has a vision for creating a unique park experience at Wilson Park that will feature classic cars and native planting beds. A nod to the Historic 41 highway car shows, local artists will be commissioned to paint each vehicle. CDS developed a path system that allows visitors to meander through the various gardens and connects to businesses along S 27th Street. A labyrinth and shaded picnic area provide additional amenities.

CDS Staff: Elise Osweiler, Kelly Iacobazzi, Rachel Schulz



Site Plan



Picnic area among the gardens



Paths meander through the gardens and classic cars

CDS 20 YEAR ANNIVERSARY

Community Design Solutions celebrates 20 years of working with communities and organizations to enhance neighborhoods throughout our region. More than 100 students have worked with communities, non-profit agencies, civic groups, and on-campus projects that have led to transformed spaces from individual buildings, parks, and streets, to corridors and districts. Thanks to everyone who has made the past two decades a success.



Home Grown Parks 2013 - 2015



Riverworks Signage 2009



MPS Reflo Schoolyards 2016 - 2020



German American Center 2005



Calvary Community Center 2016



Goat Palace 2017

IN PROGRESS: Victory Over Violence

Pavers and plantings installed this Fall continue to transform the park along Martin Luther King Drive. Blue Skies Landscaping made great progress, look forward to the stage and gathering area progress next Spring. Photos: Tim McCollow



Original CDS garden rendering



CDS created the original design concepts for all the Play Green winners: Columbia Playfield and the Reflo MPS Schoolyards. Proud to be part of this impact.



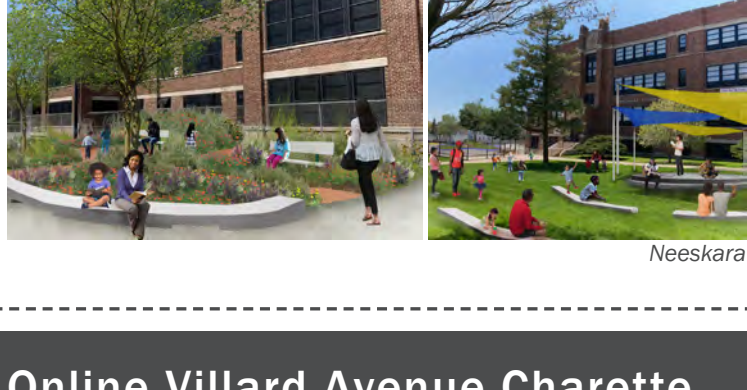
Schoolyard Redevelopment

Client: Reflo and Milwaukee Public Schools

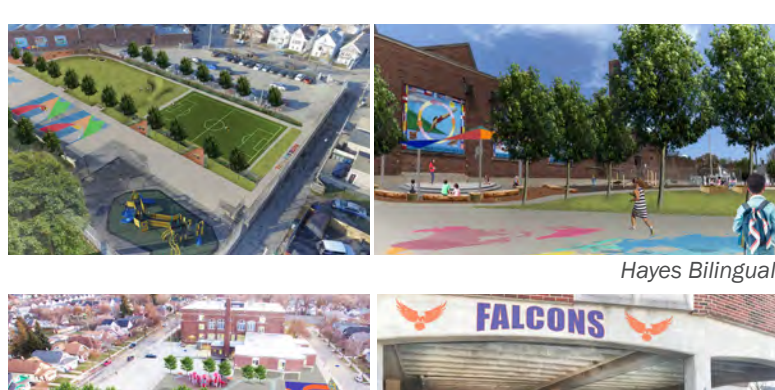
CDS and Reflo are in their fourth year of working with local schools to convert paved schoolyards into outdoor classrooms, play areas, and green infrastructure systems. The collaborative design process includes meeting with teachers, students, parents, and community members to understand the unique needs and opportunities for each school. The goal is to create greener, healthier schoolyards that serve as an extension to the classroom.

Each project is tailored to the specific needs of the school, often replacing asphalt with bioswales, rain gardens, trees, raised garden beds, and outdoor play areas and classrooms. Features this year include a climbing wall at Benjamin Franklin, a turf soccer field at Hayes Bilingual, raised garden beds at Nathaniel Hawthorne, a meditation garden at Neeskara, and an outdoor classroom structure at Zablocki.

The projects move into fundraising during year two and construction during year three. The placemaking designs go beyond removing pavement, they improve stormwater management for the area and maximize triple-bottom-line benefits.



Neeskara



Hayes Bilingual



Benjamin Franklin



Nathaniel Hawthorne



Zablocki

Online Villard Avenue Charette

CDS embraced online technology as COVID-19 required us to transition our June Villard Avenue Charette online. Our client wanted to maintain the momentum of our spring focus groups as we realized a large group gathering was not possible in the foreseeable future. Using Zoom, IdeaFlip, and Survey Monkey we had a great dialogue and provided various ways for stakeholders, residents, and business owners to provide feedback. Proposed concepts include an outdoor theater, Food Hall, pet store, new housing, and an enhanced street design with proposed bike lanes and a plaza.

Participating Architects: Dan Beyer Architects, Engberg Anderson, Galbraith Carnahan, Quorum Architects, and SmithGroup.

Client: Villard BID/City of Milwaukee



Site 1: SmithGroup streetscaping and plaza at Hopkins and Villard



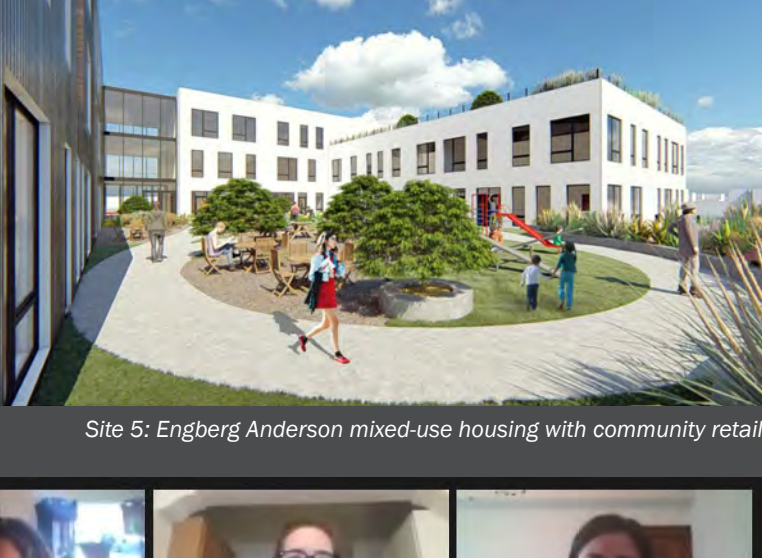
Site 2: Galbraith Carnahan Architects outdoor theater



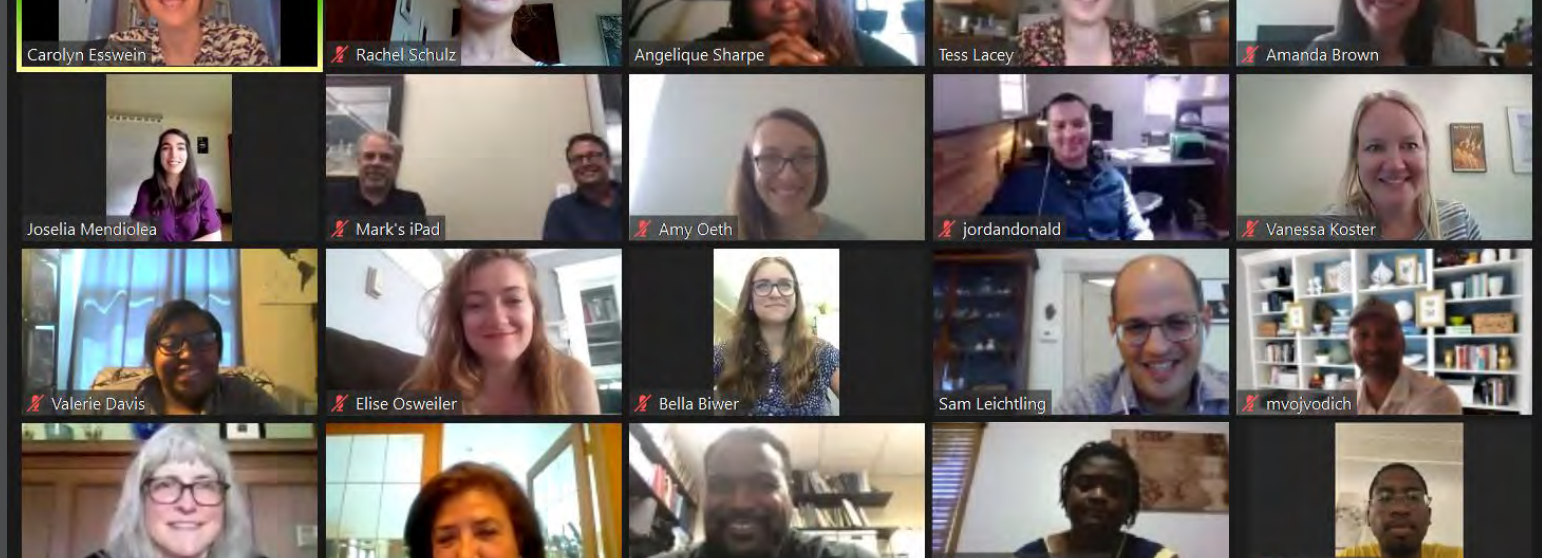
Site3: Dan Beyer Architects food hall and co-working



Site 4: Quorum Architects pet related retail and parking plaza



Site 5: Engberg Anderson mixed-use housing with community retail



Fall 2020

Request CDS to work with you:
<http://uwm.edu/community-design-solutions/service-request/>
Previous newsletters can be found at www.uwm.edu/cds

