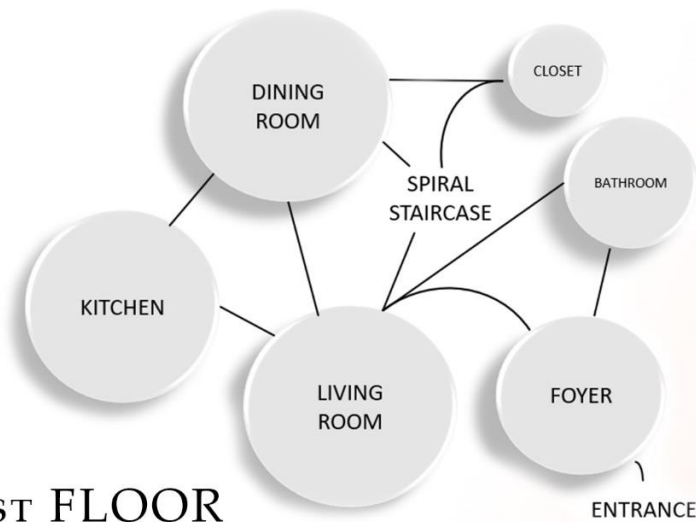
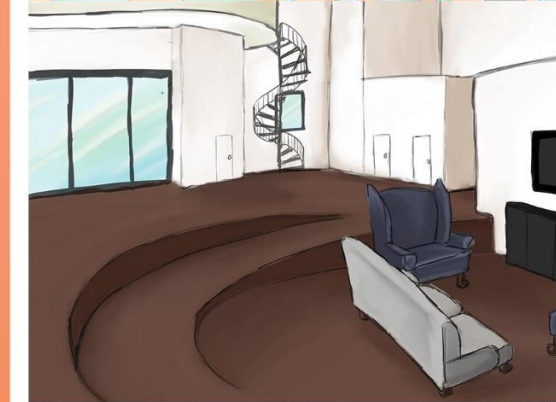
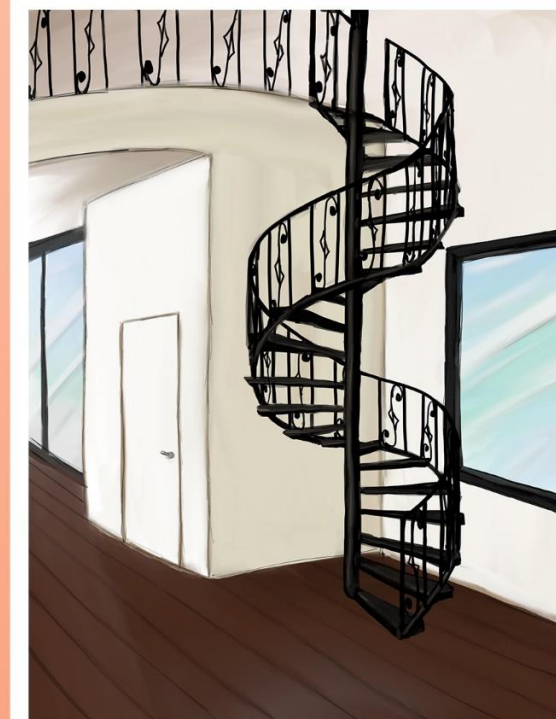
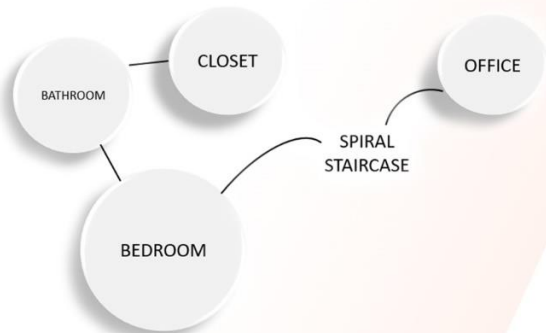


Penthouse Apartment

This Penthouse Apartment is for a client living in the upper levels of an upscale apartment complex in Moscow, Russia. The penthouse is a one and one-half story apartment that holds common spaces such as the kitchen, living room, and dining room on the main floor, and holding private rooms such as the master bedroom, bathroom, closet, and office on the second floor. At the entrance of the apartment is a large foyer that provides cabinetry and organization cubbies to store large coats and shoes as owners and guests enter the home. The penthouse has a very open floor plan that provides an open flow of movement from one area to the other. A half bath and closet sits across from the foyer, and the dining room, living room, and kitchen are all opened up to each other divided by only various floor finishes and levels. The living room floor is slightly recessed, creating a cozier social space in front of a large fireplace and television set. A steel spiral staircase leads to the second floor which holds the office at the right, and the master bed and bathroom on the left. The top of the staircase also holds space for seating to serve as a reading nook. The overall square footage of the apartment is around 1,875sq.ft.



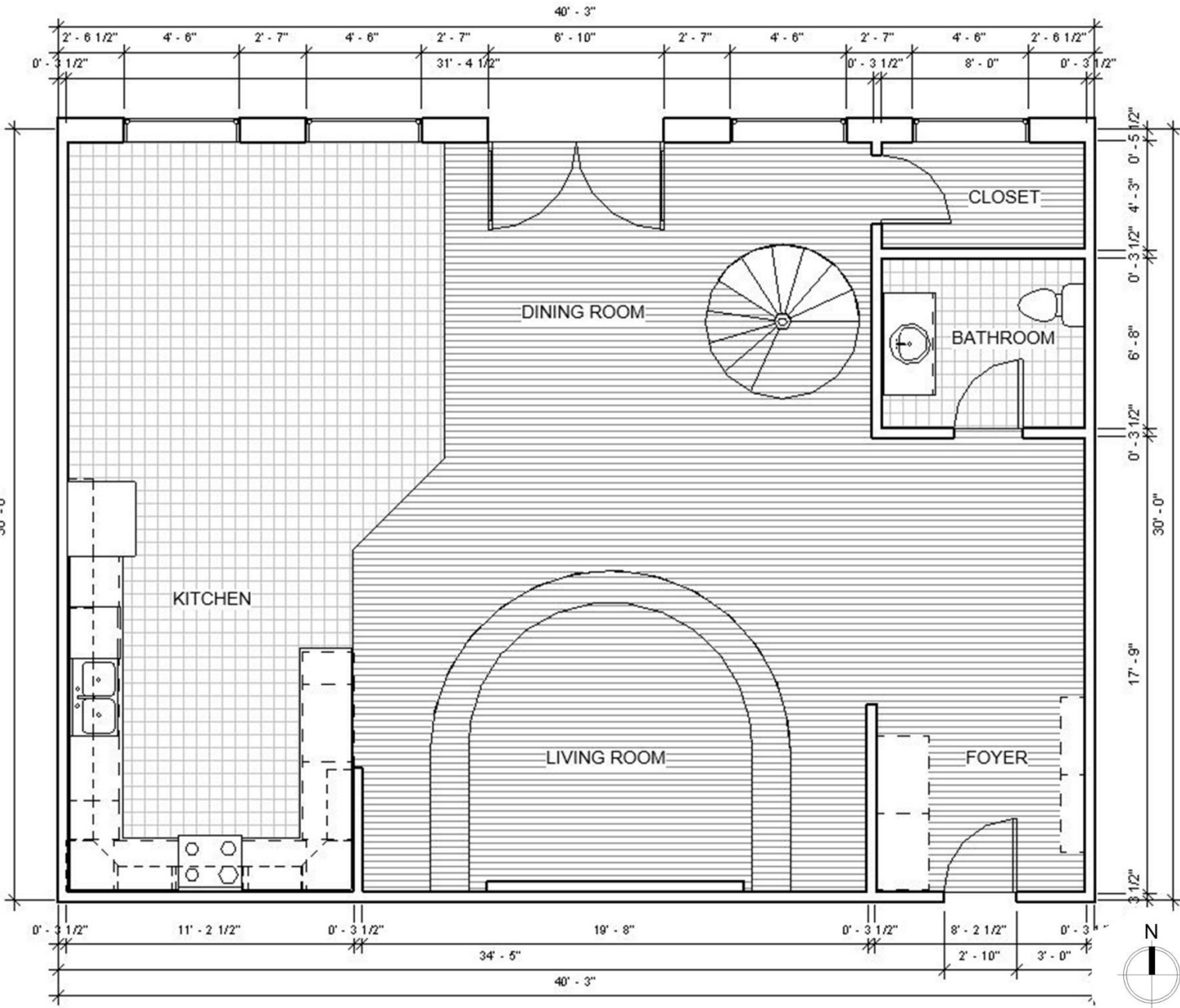
1ST FLOOR



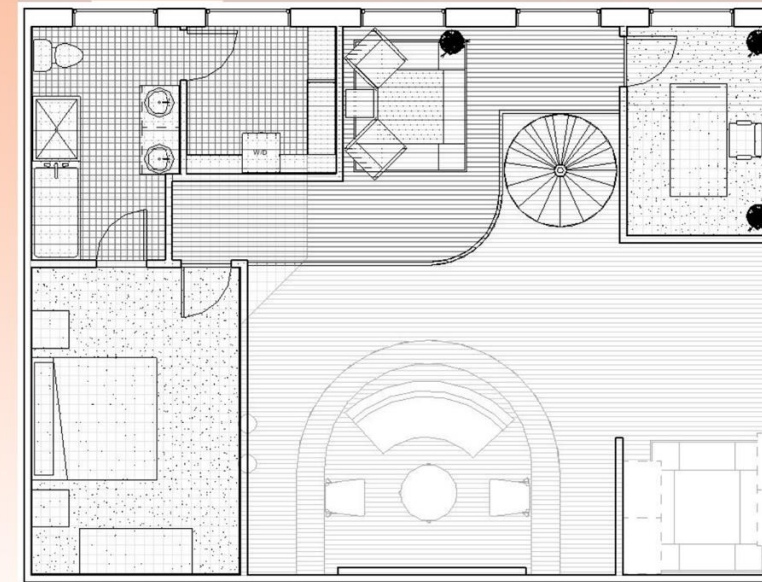
2ND FLOOR



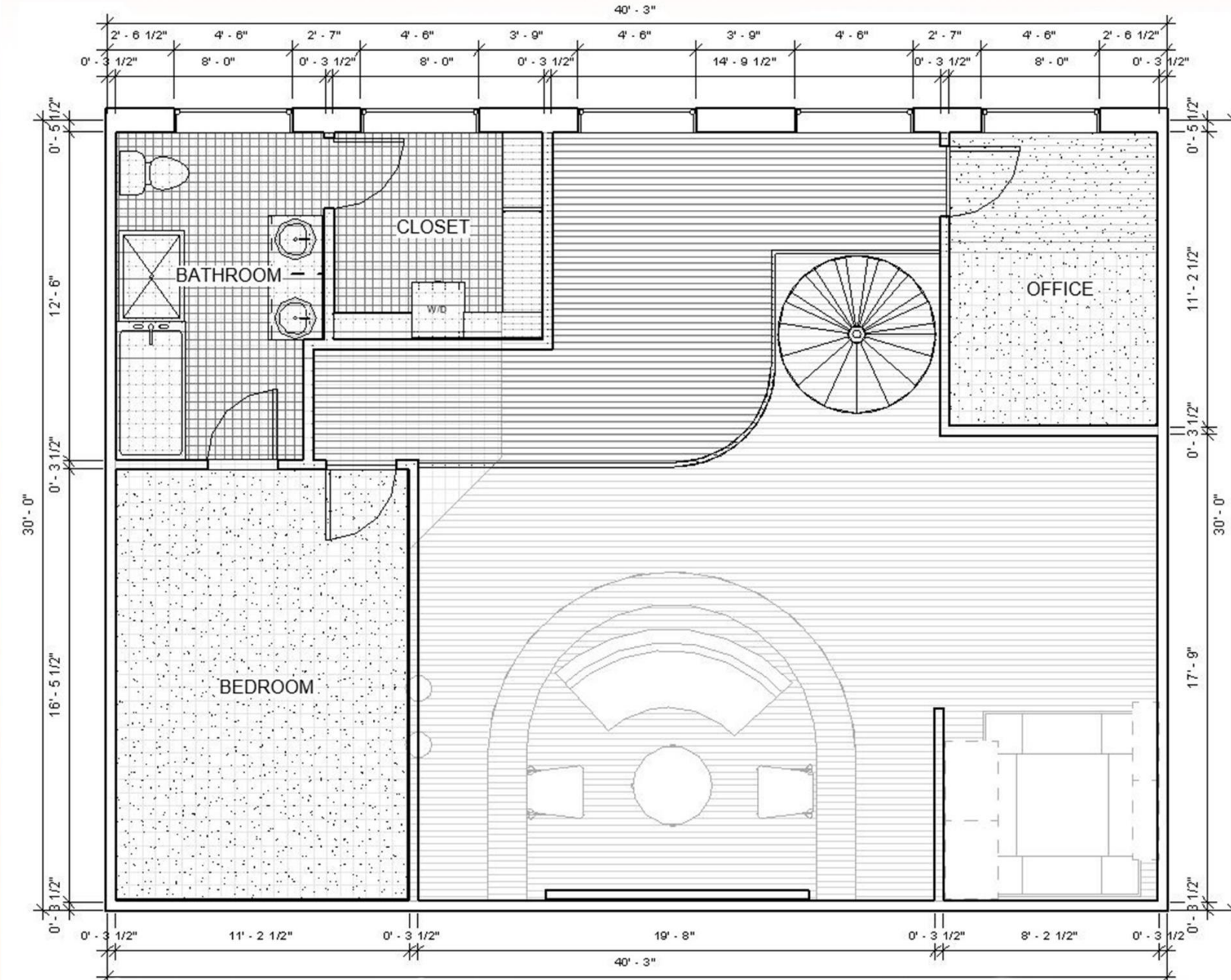
Floor Plan: 1st Floor



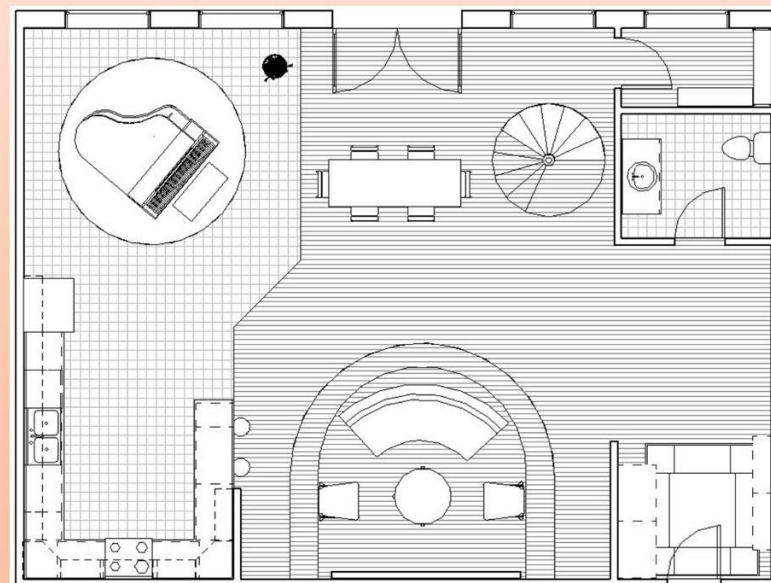
Furniture Plan: 2nd Floor



Floor Plan: 2nd Floor



Furniture Plan: 1st Floor





The finishes in this penthouse show a strong emphasis on sophistication and elegance. The variety of natural materials and textures provide an interesting and interactive environment. The color scheme contains high contrast commonly using black and white with various wood tones and oranges with occasional blue accents. The main flooring material used throughout the house is a dark stained maple wood plank that is similar in color to the dark rustic alder wood cabinetry in the kitchen.



The countertop and backsplash in the kitchen are made from large, white marble slabs. This bright white marble helps to brighten up the space and better compare to the white of the walls. This white also creates a dramatic, yet glamorous contrast between the marble used in the floor.



The flooring used in the kitchen and half bath is a dark black marble tile with white and yellow veining in it. This dark flooring creates a great sense of contrast between the white finishes also seen within the space.



The casing around the windows and exterior doors are a black metal that matches the black metal staircase and other black hardware within the space.



The upholstery used in the couch and throughout the other furniture in the house uses an ivory fabric with various shades of oranges to add color to the space. In the bedroom and office area, upholstery contains blue accents with more greys added to tone down the contrast slightly and create a more relaxing space.

East
Interior
Elevation



West
Interior
Elevation



North
Interior
Elevation



South
Interior
Elevation



Interior Renders

