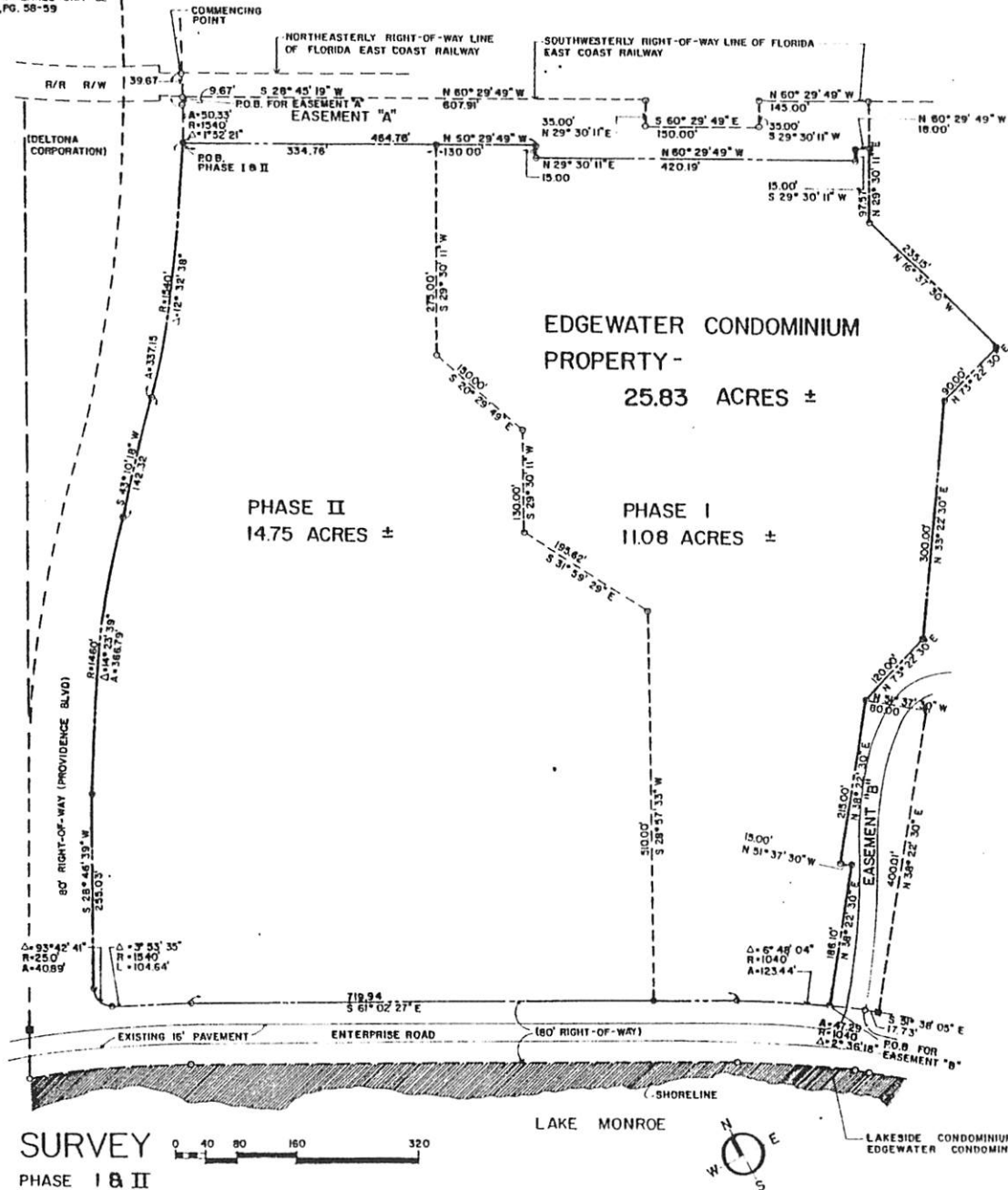
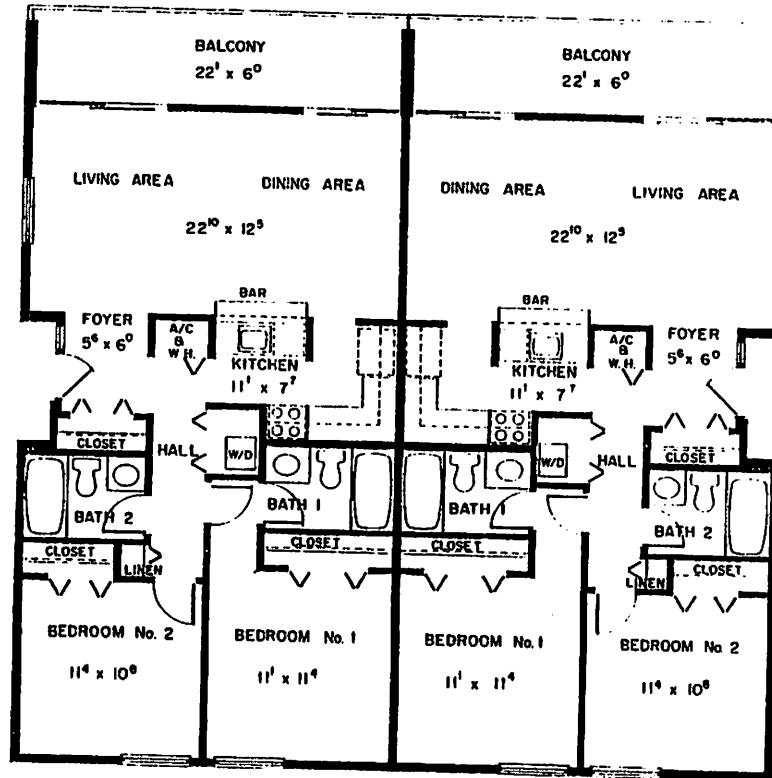


DELTONA LAKES UNIT-52
PB 28, PG. 58-59



EDGEWATER CONDOMINIUM APARTMENTS OF DELTONA, FLORIDA

ROBERT CANNEY WEST ARCHITECT

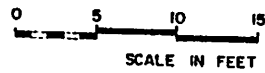


APT. No. D

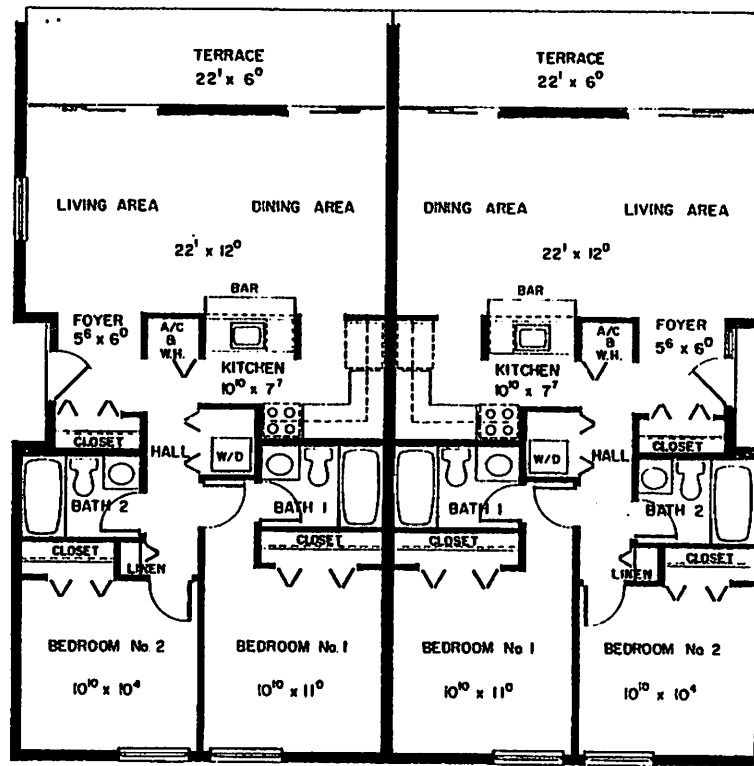
APT. No. B

FLOOR PLANS

2 BEDROOM 2 BATH



EDGEWATER CONDOMINIUM APARTMENTS OF DELTONA, FLORIDA
 ROBERT CANNEY WEST ARCHITECT

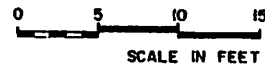


APT. No. C

APT. No. A

FLOOR PLANS

2 BEDROOM 2 BATH



EDGEWATER CONDOMINIUM APARTMENTS OF DELTONA, FLORIDA

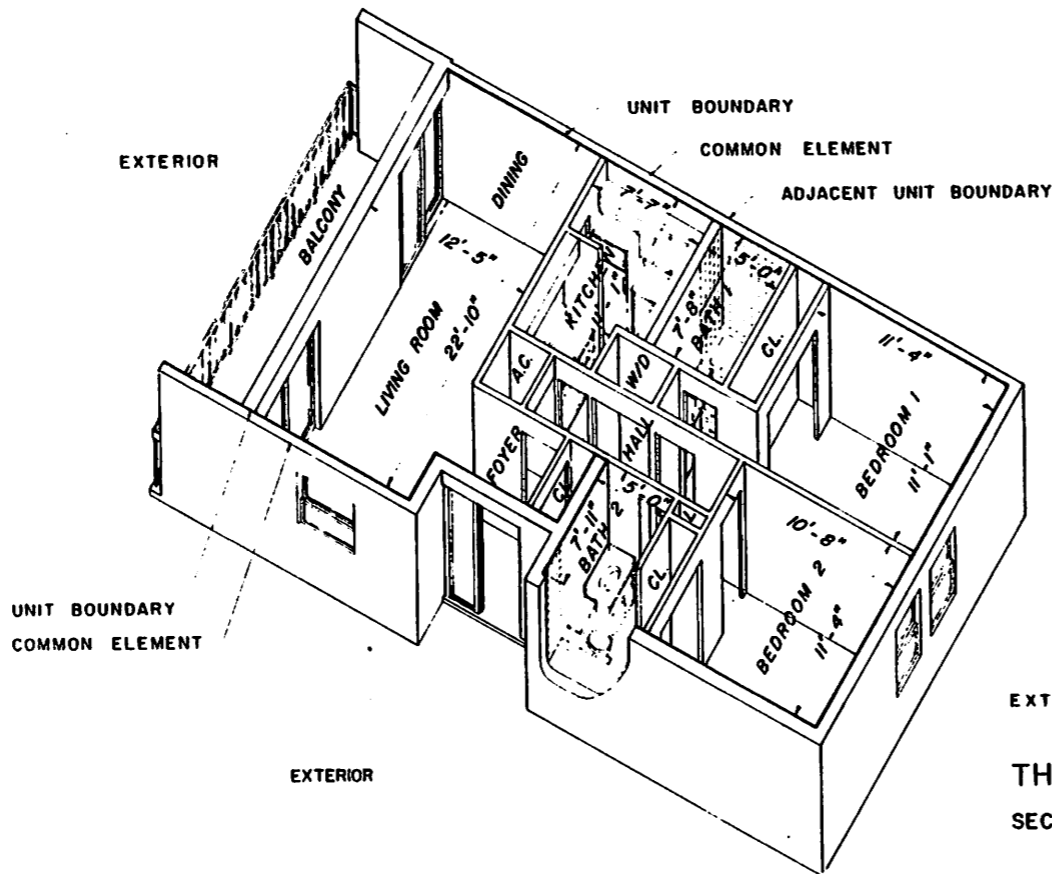
ROBERT CANNEY WEST ARCHITECT

NOTE TO PROSPECTIVE PURCHASERS:

1. This diagram is to aid in visualizing the legal dimensions of the unit. For detailed statements see the Declaration of Condominium of this Offering Plan.
2. Generally, owners are required to maintain, repair, and decorate the unit at their own expense. The Condominium Association maintains, repairs, lights and decorates the common areas with funds contributed by unit owners as common expenses. For further details see the Declaration of Condominium of this Offering Plan.

THE FOLLOWING CONSTITUTES A DESCRIPTION OF THE UNIT TO BE CONVEYED TO THE PURCHASER.

THE VOLUMES OR CUBICLES OF SPACE ENCLOSED BY THE UNFINISHED INNER SURFACES OF PERIMETER AND INTERIOR WALLS, CEILING AND FLOORS THEREOF, INCLUDING VENTS, DOORS, WINDOWS AND SUCH OTHER STRUCTURAL ELEMENTS THAT ORDINARILY ARE REGARDED AS ENCLOSURES OF SPACE AND ALL INTERIOR DIVIDING WALLS AND PARTITIONS (INCLUDING THE SPACE OCCUPIED BY SUCH WALLS OR PARTITIONS) EXCEPTING LOAD-BEARING INTERIOR WALLS AND PARTITIONS AND, THE DECORATED INNER SURFACES OF SAID PERIMETER AND INTERIOR WALLS (INCLUDING DECORATED INNER SURFACES OF ALL INTERIOR LOAD BEARING WALLS), FLOORS AND CEILINGS, CONSISTING OF WALL PAPER, PAINT, DRYWALL, CARPETING, TILE AND ALL OTHER FINISHING MATERIALS AFFIXED OR INSTALLED AS A PART OF THE PHYSICAL STRUCTURE OF THE UNIT AND ALL IMMEDIATELY VISIBLE FIXTURES, MECHANICAL SYSTEMS AND EQUIPMENT INSTALLED FOR THE SOLE AND EXCLUSIVE USE OF THE UNIT, COMMENCING AT THE POINT OF DISCONNECTION FROM THE STRUCTURAL BODY OF THE BUILDING AND FROM THE UTILITY LINES, PIPES OR SYSTEMS SERVING THE UNIT.



VERTICAL DIMENSIONS

CLG. HT. AT HALL AND BATHS: 7'-0"
 CLG. HT. AT LIVING, DINING, BEDROOM AND BALCONY: 8'-0 1/2"

ALL DIMENSIONS ARE NOTED FROM WALL SURFACE TO WALL SURFACE, EXCEPT VERTICAL DIMENSIONS WHICH ARE NOTED FROM FINISHED CONCRETE FLOOR TO FINISHED CEILING.

ALL DIMENSIONS ARE APPROXIMATE

CUBIC CONTENT: 7160 CUBIC FOOTAGE

EXTERIOR

THREE DIMENSIONAL FLOOR PLAN
 SECOND FLOOR
 NO SCALE

EDGEWATER CONDOMINIUM APARTMENTS OF DELTONA, FLORIDA

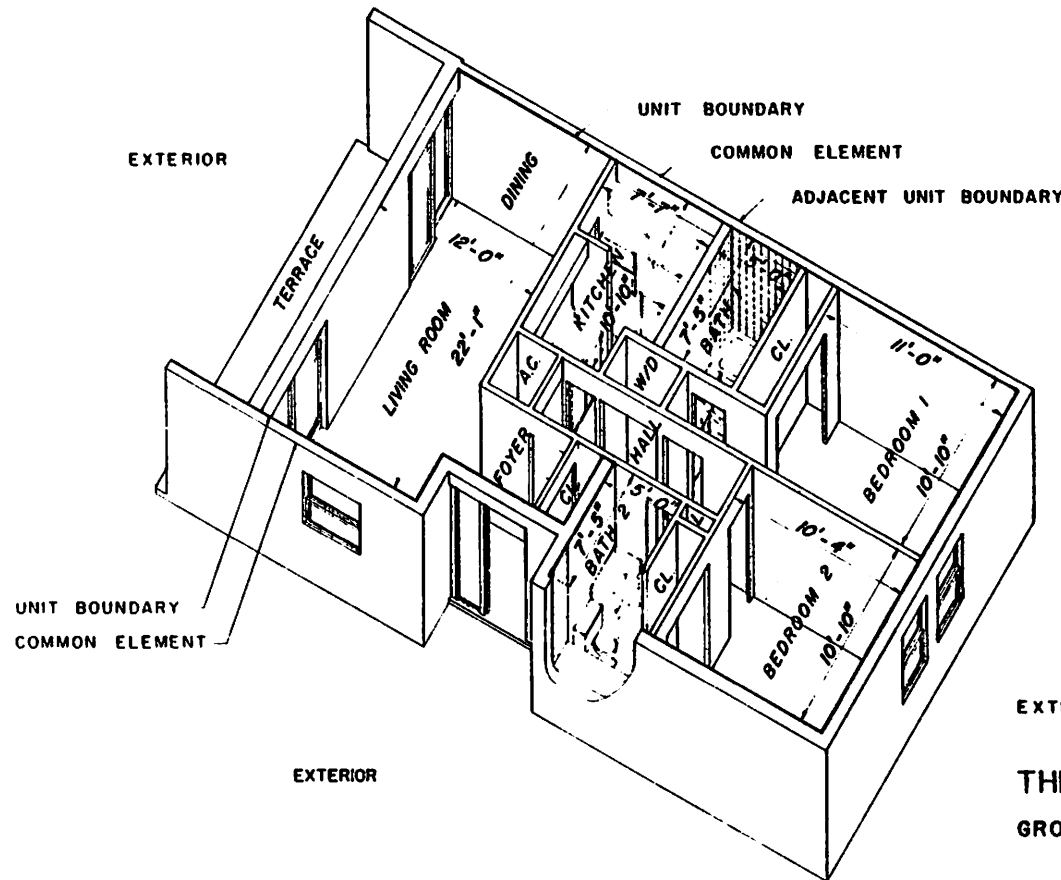
ROBERT CANNEY WEST ARCHITECT

NOTE TO PROSPECTIVE PURCHASERS:

1. This diagram is to aid in visualizing the legal dimensions of the unit. For detailed statements see the Declaration of Condominium of this Offering Plan.
2. Generally, owners are required to maintain, repair, and decorate the unit at their own expense. The Condominium Association maintains, repairs, lights and decorates the common areas with funds contributed by unit owners as common expenses. For further details see the Declaration of Condominium of this Offering Plan.

THE FOLLOWING CONSTITUTES A DESCRIPTION OF THE UNIT TO BE CONVEYED TO THE PURCHASER.

THE VOLUMES OR CUBICLES OF SPACE ENCLOSED BY THE UNFINISHED INNER SURFACES OF PERIMETER AND INTERIOR WALLS, CEILING AND FLOORS THEREOF, INCLUDING VENTS, DOORS, WINDOWS AND SUCH OTHER STRUCTURAL ELEMENTS THAT ORDINARILY ARE REGARDED AS ENCLOSURES OF SPACE AND ALL INTERIOR DIVIDING WALLS AND PARTITIONS (INCLUDING THE SPACE OCCUPIED BY SUCH WALLS OR PARTITIONS) EXCEPTING LOAD-BEARING INTERIOR WALLS AND PARTITIONS AND, THE DECORATED INNER SURFACES OF SAID PERIMETER AND INTERIOR WALLS (INCLUDING DECORATED INNER SURFACES OF ALL INTERIOR LOAD BEARING WALLS), FLOORS AND CEILINGS, CONSISTING OF WALL PAPER, PAINT, DRYWALL, CARPETING, TILE AND ALL OTHER FINISHING MATERIALS AFFIXED OR INSTALLED AS A PART OF THE PHYSICAL STRUCTURE OF THE UNIT AND ALL IMMEDIATELY VISIBLE FIXTURES, MECHANICAL SYSTEMS AND EQUIPMENT INSTALLED FOR THE SOLE AND EXCLUSIVE USE OF THE UNIT, COMMENCING AT THE POINT OF DISCONNECTION FROM THE STRUCTURAL BODY OF THE BUILDING AND FROM THE UTILITY LINES, PIPES OR SYSTEMS SERVING THE UNIT.



VERTICAL DIMENSIONS

CLG. HT. AT HALL AND BATHS: 7'-0"
 CLG. HT. AT LIVING, DINING, BEDROOM AND BALCONY: 8'-0 1/2"

ALL DIMENSIONS ARE NOTED FROM WALL SURFACE TO WALL SURFACE, EXCEPT VERTICAL DIMENSIONS WHICH ARE NOTED FROM FINISHED CONCRETE FLOOR TO FINISHED CEILING

ALL DIMENSIONS ARE APPROXIMATE

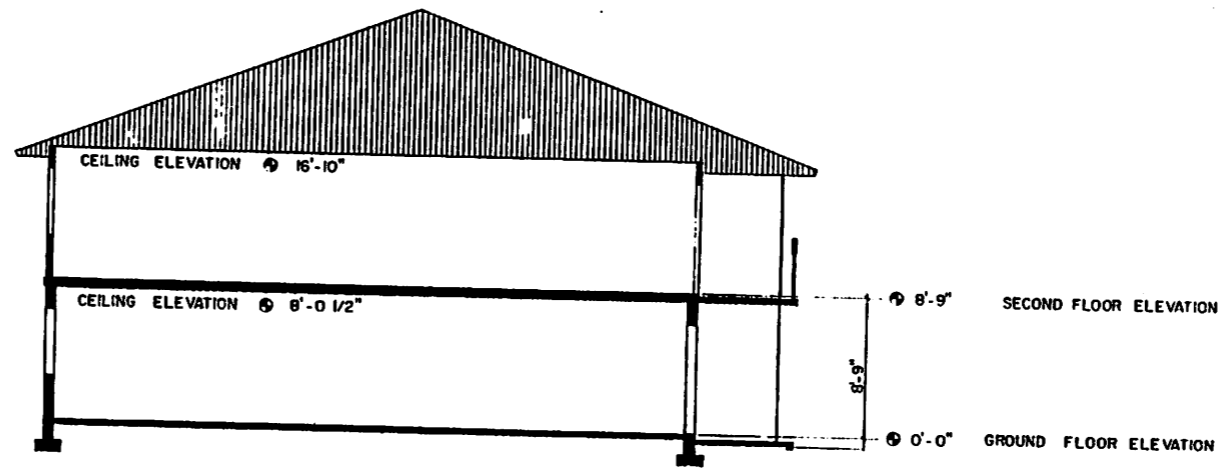
CUBIC CONTENT: 6867.2 CUBIC FOOTAGE

EXTERIOR

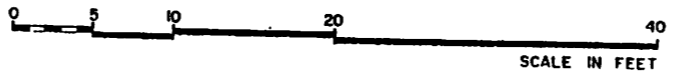
THREE DIMENSIONAL FLOOR PLAN
 GROUND FLOOR NO SCALE

EDGEWATER CONDOMINIUM APARTMENTS OF DELTONA, FLORIDA

ROBERT CANNEY WEST ARCHITECT



SECTION



EDGEWATER CONDOMINIUM APARTMENTS OF DELTONA, FLORIDA

ROBERT CANNEY WEST ARCHITECT

EXHIBIT: 2
PAGE: 12