

Westside Stories

"The Pride of the Westside"

A community newspaper by and for residents of the Leeward Coast of O'ahu, Hawai'i
Direct mailed to over 15,400 residences in the areas of Nānākuli, Mā'ili, Wai'anae, Mākaha and Mākua

SEPTEMBER 2021
Volume 23, Number 9

Lā Ho'ihō'i Ea Wai'anae

Submitted by Kini Pihana

Wai'anae Aloha 'Āina (WA'A) hosted its first event on July 31, with a celebration of Lā Ho'ihō'i Ea Wai'anae held at Pōka'i. Lā Ho'ihō'i Ea commemorates the restoration of sovereignty to the Hawaiian Kingdom in 1843 to Kamehameha III, Kauikeaouli by British Admiral Richard Thomas. This act was memorialized when Kamehameha III uttered the famous words, "*Ua mau ke ea o ka aina i ka pono*" - "*The ea (sovereignty) of our land is perpetuated through justice*," and established Thomas Square as the first public space of the kingdom. Rooted in the theme "Komohana 'A'e"

(Westside Raising) various community organizations and residents came together and created a momentous commemoration. Lā Ho'ihō'i Ea, not only reminded everyone of what the Hawaiian nation encountered in 1843, it also paved pathways for the lāhui (nation/people) to reconnect to the 'āina, culture, "EA-ducation" (sovereignty education) and engage in conversation of the future of the lāhui.

Blessing the day with protocol for all in attendance was the members of the Royal Order of Kamehameha I, arriving by wa'a (canoe) and greeted by the sound of the pū (conch shell) on the shoreline. It was an amazing experience for those in attendance. As the wa'a touched land continuous greetings of oli (chant) from Royal Order of Kamehameha I and nā wahine of Ka Lei 'Āina Ali'i, the procession of kahili and the lāhui gathered at the lele (altar) for the raising of our Hae Hawai'i (Hawaiian flag). Raising

Continued on page 10



(Pictured above) Some of kamali'i in attendance.

ALSO IN THIS MONTH'S ISSUE

WEDC's Business of the Month

~ Page 3 ~

Legislatively Speaking

~ Page 4 ~

Community Christmas Parade Cancelled

~ Page 4 ~

"What's Up" on the Westside

~ Page 9 ~



Uncle Kimo Ayau and crew getting ready to serve some "onolicious" food.



Kumu Nanipua Peterson teaching the importance of pū ohe



Celebrating Labor Day - Monday, September 6, 2021

Presorted
Standard
U.S. POSTAGE
PAID
HONOLULU, HI
PERMIT NO. 169

Kingdom Pathways & Pōka'i Bay NSW Team Up to Clean Up

On August 14, Kingdom Pathways, led by Joseph Kaahema Simpliciano and Carmen Guzman, members of the Pōka'i Bay Neighborhood Security Watch, friends and neighbors gathered along Pōka'i Bay Street with their weed whackers, rakes, hoes, tree trimmers,

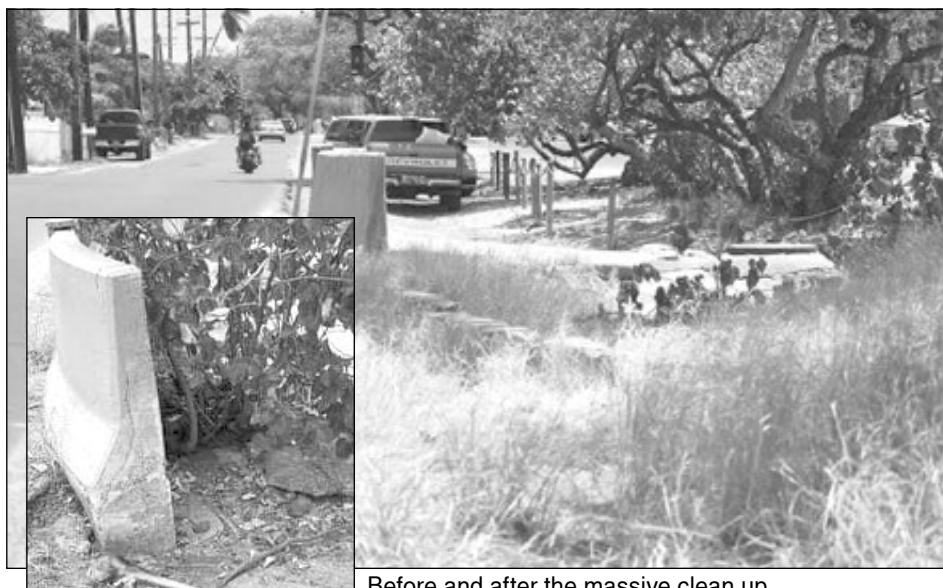
gloves and trash bags to begin to clean the long-neglected area on the makai side of the road from Pōka'i Bay to Luahalei Beach Park (Sewers) including "Middle Beach".

This area is a hidden gem that is being taken back by the community from

crime, excessive speeding/racing and illegal dumping. The ocean also received clean up attention by the volunteers by hauling out coolers, blankets, roofing materials, blow up mattress, pipes and tires.

An event like this takes many hands

Continued on page 3



Before and after the massive clean up



Just some of the massive amounts of trash bags ready to be taken to the dump.



From the Publisher

By Steve Olbrich

Although we are still in Tier 5 it's sad to say that due to the increased cases of the Delta Variant, our case counts continue to rise — especially here on our Westside. Many island-wide events have been cancelled as well as in person attendance at all UH sporting events. We all must scale back any events we have planned with our 'ohana or groups so make sure we are all safe. Please get you and your 'ohana vaccinated so we can continue to move forward and get back to normal!

Speaking of vaccines, Waianae Coast Comprehensive Health Center (WC-CHC) is continuing to offer free vaccinations at six sites to everyone age 12 and over at various locations along our Westside. Call them at 427-3659 or visit hawaiiicovid19.com, or by calling 211 or calling your health care provider (See page 5). In addition, with many companies and businesses now requiring that their employees be vaccinated, there will be many more "pop up" clinics. Please keep watching our Facebook page to see where and when these are as we will try and keep you updated.

Tropical storm Linda fizzled out before reaching our Westside and all we got was a very small bit of rain and lots of wind. However, don't let your guard

down as hurricane season lasts through November 30. Sad to say everything is very dry and we are at risk for brush fires.

Congratulations to Twinkle Borge and James Pakele of Pu'uuhonua o Wai'anae, Innocenta Sound-Kikku of Kokua Kalihi Valley's Pacific Voices program, and Virginia "Ginger" Fuata of Lili'uokalani Trust who were recently honored by Partners In Development with the 2021 Ulu Hana: Pewa Awards which celebrate Hawai'i's "Unsung Heroes" with all the work they do daily in their community and bring about transformational change. For more information or to see a live rebroadcast of the show, visit pidf.org

Speaking of "unsung heroes," big mahalo to all of you who continue to do community cleanups, painting and restoration of beach park bathrooms, cleaning of various public facilities, etc. without waiting for the city or state to do it. Your work is truly appreciated!

WCCHC recently launched their Kupuna Pantry program for kupuna ages 65 and older at various sites along our Westside. Make sure you help any kupuna who may need a bit of help during these trying times. (See page 10).

In addition, WCCHC has also

WESTSIDE SCHOOL PRINCIPAL'S QUICK REFERENCE PHONE GUIDE

School | Principal | Phone

Leihoku El. - Randall Miura: 808-697-7100

Mā'ili El. - Suzie Lee: 808-697-7150

Mākaha El. - Wade Araki: 808-307-7400

Nānāikapono El. - Christine Udarbe: 808-305-7800

Nānākuli El. - Lisa Higa: 808-668-5813

Nānākuli High/Inter. - Darin Pili'aloa: 808-668-5823

Wai'anae El. - Sheldon Konno: 808-697-7083

Wai'anae High - Ray Pikelnny: 808-697-9400

Kamaile Acad. PCS - Paul Kepka: 808-697-7110

Wai'anae Inter. - John Wataoka: 808-697-7121

Ka Waihona o ka Na'auao

PCS - Kalehua Krug: 808-620-9030

launched Food Pantries at various elementary schools along our Westside to ensure that no child or their family goes without food during this pandemic. This is in addition to the EBT/SNAP Double Bucks programs at their Mākeke Farmers Market on Tuesdays and Saturdays. (See ad on page 10).

Big mahalo to Councilmember Andria Tupola and Representative Stacelyn Eli for finally getting the bus stop fixed in front of Tamura's. Now let's hope we can get the one fixed across from WC-CHC.

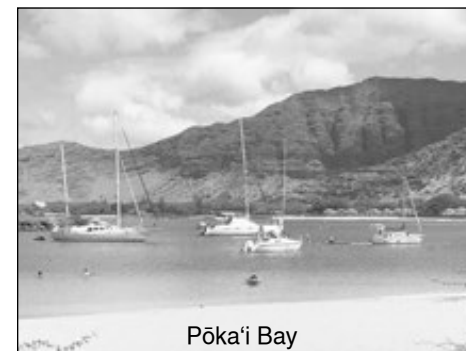
As we continue to try and maneuver through this next version of our "new normal, let's remember to reach out to help one another and thank the many individuals, community members, businesses, organizations, schools and churches continue to pull together. Mahalo nui loa to you all who continue to volunteer and "step up" to help those in need, especially the Waianae Coast Comprehensive Health Center's Health Promotion Department and their partners. Hang in there, get your shot and remember "We're all in this together!"



Last month's question was, "Sad to say, with the continued pedestrian accidents along Farrington Highway, are they ever going to fix the lighting at night or light up the crosswalks? Seems like every night there are more and more lights out and it's hard to see and very dangerous for pedestrians — especially in those unlit crosswalks."

We reached out to the State Department of Transportation as well as the City & County about this and unfortunately received the same response. It seems as soon as they get them up and working, the wire is stolen. Sad to see this continue to happen. You may want to reach out to our elected officials and ask them to initiate some type of bill to address the recyclers and large quantities of copper being recycled by one individual or family.

Now for this month's question, "I



Pōka'i Bay

wanted to share this photo taken at Pōka'i Bay on a recent weekend. As you can see, there were several boats moored inside the bay making it hard for anyone to swim, paddle board, kayak or enjoy any other water sport. I thought it was illegal to bring boats inside the bay (past the old breakwater/jetty/wall) and keep them there for the weekend."

If know the answer or want to ask a new nīele question, e-mail us your question and/or a photo to wss@hawaii.rr.com or drop us a line at the address below. We will report back next month

Contributors to this Month's Issue:

Craig Alvarado, Gen Anduha, Sally Ford, Alicia Higa, Joseph Lapilio, Sheryl Lynch and Kini Pihana

We would like to take this opportunity to thank all of those who contributed to their community newspaper and we invite everyone to do the same.

Next issue: October 2021 • Story & Advertising Deadline: September 10, 2021



A Community Newspaper by and for the residents of the Leeward Coast of O'ahu, Hawai'i
Direct mailed to over 15,400 residences in the areas of Nānākuli, Mā'ili, Wai'anae, Mākaha and Mākua

P.O. Box 4027 • Wai'anae, HI 96792 / Telephone: (808) 696-7978

E-mail: wss@hawaii.rr.com / Website: wsshawaii.com

Published by: Olbrich Enterprises

Editor: Gail Gomes / Production Manager: Eric Uptegrove

Westside Stories assumes no responsibility to return unsolicited materials submitted for publication. Unsolicited material will be subject to Westside Stories unrestricted right to edit and to comment editorially.

Submission of material to Westside Stories for publication implies the author's warranty that said material in no way is an infringement on the rights of others. All submitted material will be treated as unconditionally assigned for publication and copyright purposes.

Any opinion(s) expressed in any bylined article(s) or paid advertisement(s) published in Westside Stories belongs solely to writer/advertiser and not Westside Stories. We uphold free speech and first amendment rights.

Acceptance of an advertisement into Westside Stories does in no way mean that the staff or publisher endorses the service or product of said advertisement.

© 2021 by Westside Stories. All rights reserved. No part of this newspaper may be reproduced, stored in a retrieval system or transmitted in any form without prior written approval from the publisher.

Join us as
we observe

LABOR
Day

Monday, September 6, 2021

Anson O. Rego

Attorney At Law / A Law Corporation

Celebrating 51 Years of Law Practice - 48 in Wai'anae!

Experienced Trial and Worker's Injury Attorney

Personal Injury • Workers Compensation • Wills

• Trusts • Probate • Real Estate

Serving Leeward O'ahu, especially: Nānākuli, Mā'ili, Wai'anae, Mākaha, Kapolei, Ewa Beach, Waipahu, Wāhiawa, Mililani, Mākakilo and Honolulu.
Neighbor Islands by appointment.

Tel: (808) 696-7061 • Fax: (808) 696-7765

e-mail: regoa@hawaii.rr.com / www.ansonregolaw.com

WAI'ANAE OFFICE

85-833 Farrington Highway
Wai'anae, HI 96792

HONOLULU OFFICE

Seven Waterfront Plaza,
500 Ala Moana Blvd
Honolulu, HI 96813



Pōka'i Bay NSW Team Up to Clean Up

Continued from front page

and lots of sweat! The group would like to say mahalo nui loa to the Reeves 'ohana, Josiah Tubbs, Mary, Ira and his keiki and 'ohana and Anake Georgiana Hooulu, the Baxter 'ohana and Karen for your continued Aloha 'Aina efforts! Also, to John Travis III and crew for hearing the "kāhea" (call out) and coming out to provide security and road safety; CJ, Mana, Akona and Scott who are also from the City and County Parks for their generous donations and helping to facilitate volunteer hours!

Mahalo to all the volunteers from our beautiful community you truly are appreciated! Mahalo Nui Loa to Honey Aipa and Anointed Hands Hawaii for picking up all the 'opala bags and hauling it to the dump (lifesaver).

Please let Kingdom Pathways know how they can help you to take back your neighborhood and community by visiting their website: kingdompathways.info

FOWL Holds 25 Cent Sale at "Book Nook"



During the pandemic, many Westsiders cleaned out their closets and shelves and discovered they had an abundance of books and DVDs, which were donated to Wai'anae Public Library once the library reopened. Friends of the Wai'anae Library (FOWL) cleaned and sorted through them all and placed them in their "Book Nook" located in the lobby of the library.

In addition, many of the public schools closed their libraries due to the pandemic and the librarians "weeded" the collection. This led to an over abundance of books (both hard back and soft backs), books for all genre and DVDs. FOWL members decided it was time to have a sale and offer them all to the public.

Beginning September 1 and running throughout the month, all items in the "Book Nook" will be sold for just 25 cents! Make sure you stop by during normal library hours and buy! These great bargains won't last — so make sure you get yours now!

Save time & money...

Shop Locally

Help support the businesses and services that support your community.

WEDC Business of the Month: Mama's Place Serves Up Local-Style Comfort Food

Submitted by Craig Alvarado for Wai'anae Economic Development Council

Chantell Moniz is the owner and culinary creator behind Mama's Place in Wai'anae. Mama's Place is a tribute to the love and goodness that come from not only home-cooked meals, but also honors the legacy of Moniz's "mama" Elizabeth Ke and her "mama-in-law" Gloria Moniz.

Moniz's love for cooking was inspired by her Hawaiian mom who eagerly learned to cook Puerto Rican food for her multi-cultural family. As a young adult Moniz's first cooking gig was at a bar in town which evolved into a successful catering and pop-up business serving Hawaiian and Puerto Rican food.

Moniz was well prepared for the COVID pandemic so when construction reduced her customer traffic at her daily pop-up location in 'Ewa Beach, she



Mama's Place management team: (L-R) Audreen "Hoku" Kea/Manager, Chantell Moniz/President, Cassie Moniz/Vice-President and Robert "Paka" Clark.

moved on to a new venture running a successful vending machine business. Missing her food roots, Moniz restarted her pop-up business in 2019 as Mama's Pastele Shop, selling at Farmer's Markets and other venues. As COVID en-

sued and closed formal venues, she moved her pop-up to Nānākuli's Zablan Beach where her Puerto Rican dishes sold out daily.

While COVID shuttered many busi-

Continued on page 8

FOSTER ♥ REALTY

WE > ME

Let's take care of each other.

Foster Realty, Inc.
License No. RB-17493

A portion of every sale is donated to Prevent Child Abuse Hawaii and various animal shelters that support the prevention of cruelty to animals.

2021 HONOLULU MAGAZINE
BEST IN REAL ESTATE

85-786 Farr. Hwy.,
Wai'anae, Hawai'i 96792

808.696.0774

www.foster-realty.com
info@foster-realty.com

Legislatively Speaking



Senator Maile Shimabukuro

*Senate District 21
Wai'anae Coast
Ko Olina
Honokai Hale
Kalaheo*

Aloha - I am excited to share the following announcement from the Hawaii Department of Transportation (HDOT):

If we've learned anything in the pandemic, it's that access to broadband — that digital superhighway — affects everyone. So how do we help people work or learn from home? One answer already in the works is a pilot project



Sen. Shimabukuro (right) congratulates a proud graduate of NHIS class of 2021, Pre-stent Kaho'okele-Himalaya.

from HDOT to help more people connect to the internet, even if they don't have their own service provider. HDOT Deputy Director for Highways Ed Sniffen is preparing a state-managed WiFi system, especially to help rural communities. The project will focus on eight areas: Kalihi, Kapa'a, Wai'anae, Nānākuli, Waimānalo, Kau, Puna and Hana. "We're using the backbone of our state highways and county roadways to extend wireless into underserved neighborhoods," explained Sniffen. "From my perspective, Wi-Fi is like electricity now. You can't live without it; you have to have it."

The pilot project, to get under way in the coming months, will provide WiFi access to two people per household, devices if needed, and a staffed help desk. A wireless mesh will be created through installation of fiber and wireless access points using State and county road infrastructure. Expected transportation related benefits of the project include reduction in vehicle miles traveled as residents have increased access to remote work and learning, increased capabilities for the system in use of Intelligent Transportation Systems (e.g., travel times, adaptive signals, and incident management), and preparation for connected autonomous vehicles.

Continued on page 8



Representative Cedric Gates

*House of Representative
District 44
Mā'ili/Wai'anae/
Mākaha/Mākua*

Aloha Wai'anae Coast Residents!

If you were not aware, according to new reports by the State Department of Health, the Wai'anae Coast continues to have the highest average case count compared to the rest of the state. I encourage people to continue to stay vigilant about the new Delta variant, wear masks, and practice proper hygiene.

Let me be clear: I believe getting vaccinated is a personal choice and people have a right to make that decision, but it is a decision with a very real community impact — one that affects our kupuna, keiki, and most vulnerable. The numbers are real and damaging as we have one of the lowest vaccination rates

and the highest case count in the state. It was a tough decision to confidently get vaccinated at first, to be completely honest. As a State Representative, I interact with numerous people in the community as a part of my job and after consulting with my physician, I decided that as a leader I needed to lead based on science, not misinformation, and set an example for our community. I needed to play my part to protect my 'ohana and those around me. Although we have made significant progress with getting Hawai'i vaccinated, I want to reemphasize the urgent need for people to have honest conversations with their health care providers about the vaccine. Please help our community in stopping the avoidable deaths and hospitalizations from COVID-19 by choosing to get vaccinated.

If you need assistance in finding a place to get vaccinated or would like to share your concerns, please feel free to contact me at RepGates@capitol.hawaii.gov or by phone at 808-586-8460.

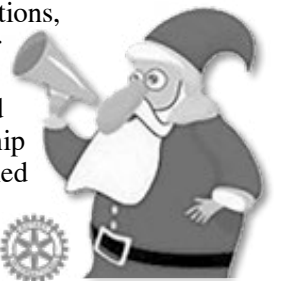


I am proud to announce that Governor Ige released \$200,000 in funds that we secured at the legislature for wildfire mitigation for Ka'ala Farms. Wildfires continue to be a threat to our community across the Coast, and I will continue to push for better enforcement and prevention of arsonists, better land management, and emergency access routes for our community.

Waianae Coast Rotary Club Cancels Christmas Parade

Due to the recent changes in the City's permitting regulations, "Outdoor events are reduced to a 25-person maximum for special events on City right of way. Block Party and Parade coordinators, the 25-person maximum is accumulative and includes not just event participants, but staff and viewership at your events," the Waianae Coast Rotary Club has cancelled the annual Community Christmas Parade. They hope to do something for the keiki at holiday time. Stay tuned for updates!

Rotary





Dr. Rina Patel-Jerls

KINGDOM CHIROPRACTIC

87-2070 Farr. Hwy. #B4 (next to Cricket Wireless)
Sack 'n Save Shopping Center

New Patient Special \$49

ACCEPTING MOST INSURANCE:
HMSA, KAISER, VA, NO FAULT
& WORKER'S COMP

Discounts Available for Non-Insurance Patients

808-425-2473

www.kingdomchirohi.com

Ark of Safety Christian Fellowship

No In-Person Service Until Further Notice.

Stay Safe and Covered with the Blood of Jesus!

JOIN US ONLINE



**LIVE
STREAMING**

**SUNDAYS 9 AM,
WEDNESDAYS 7 PM**

**You Tube AOS MEDIA f LIVE ARK OF SAFETY
CHRISTIAN FELLOWSHIP**

FOR MORE INFO CALL (808)-696-3781





Wai'anae Wags Pet Food Pantry is in desperate need of all kinds of pet food to be able to continue to assist community members during these difficult times. Due to economic hardship, an increase of people are either surrendering or abandoning their pets here on the Westside. However, they need the community's support as well.

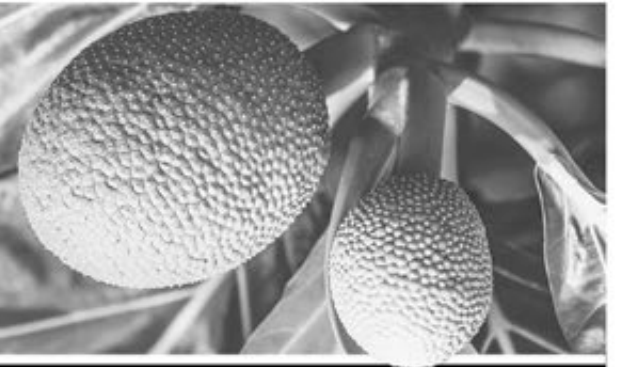
Please donate or drop off unopened bags or cans of pet food, treats, etc. to 85-786 Farrington Highway (Foster Realty Building) from 9 am to 12 noon Monday through Friday or mail a monetary donation or gift card to Wai'anae Wags

- PO Box 1099
- Wai'anae, HI 96792.

To receive assistance, email: waianaewags@yahoo.com or text 808-754-7187 Mahalo!



WAIANAE COAST COMPREHENSIVE HEALTH CENTER



HEALING • LEARNING • INNOVATION

Ka Leo `O Ke Aloha Me Ka Leo `O Ke Ola ~ *The Voice of Aloha, the Voice of Health*

SEPTEMBER 2021 VOLUME 38 • NUMBER 9 • RICHARD BETTINI, PRESIDENT & CHIEF EXECUTIVE OFFICER • DR. STEPHEN BRADLEY, CHIEF MEDICAL OFFICER • DAN GOMES, BOARD CHAIR

Congratulations to Our Nurse Practitioner Graduates

In August, Waianae Coast Comprehensive Health Center graduated its 6th cohort of NP Residents in their Na Lei Kukui NP Residency Program. These 4 NP Residency graduates succeeded through a 1-year paid training program where they honed their skills as new APRN's while learning more of the specialties provided at WCCHC that would help them in their careers in community health. These 4 graduates are now a part of the more than 30 APRNs WCCHC has trained within this Residency. Some of the graduates serve as leadership in the residency and preceptors to the clinical rotations. The week of their graduation was National Community Health Center week. We are proud to share all 4 graduates are pursuing to continue careers in community health care and specifically with Federally Qualified Health Centers. The three gentlemen pictured here will be staying on board at WCCHC in full-time positions in various clinics.

Christopher Dayoan, APRN, FNP

Born and raised in Waipahu, the son of Filipino Immigrants, he is the first in his family to graduate from college. Chris is committed to serve near the community where he was raised. He will be working in WCCHC's West Oahu Community Health Center's Urgent care walk in clinic in Kapolei, Hawaii. Mabuhay!

TINA MYERS, APRN, FNP

Tina grew up in the seaside town of Kailua, then lived and worked for several years as a nurse on the island of Maui. Sacrificing time with her family & children she moved to Oahu to complete the NP Residency year. Her sacrifice was made to learn how to best meet the health needs of Native Hawaiians. She now will continue to serve her Native Hawaiian community at Malama I Ke Ola, a federally qualified health center on the island of Maui. Chee Hoo!

VICTOR SOLIS OJEDA, APRN, AGNP

Victor's journey has been long to arrive at the shores of Oahu. He started life out on a farm in rural Mexico, then immigrated to the U.S. as a teenager. He graduated from nursing school in Georgia, where he then worked as a trauma nurse, while at the same time finishing NP school. Victor has shown a continued dedication to taking care of the underserved community here in Hawaii; he will be providing primary care in the Adult Medicine clinic on the Main Campus of WCCHC. He will be continuing to see his patient panel and accepting new patients. Si Se Puede!

STEVEN KEONE YOUNG, APRN, FNP

Growing up in Kaneohe, on the Windward side of Oahu, Keone spent many days surfing the waves, developing a special inner peace and ability to connect with others! Keone finished his schooling with the help of the Native Hawaiian Health Scholar Program, then joined our NP residency program. He will continue to serve the Waianae community at WCCHC's School Based Clinics. Yah you!

The next cohort of NP Residents begun August 23, 2021. Applications for NP Residents open in January 2022 and are due April 1, 2022. If you know someone who is or will be a new APRN, please encourage them to apply or reach out to npresidency@wcchc.com for more information.



Our NP Residency Graduates (Left to Right) – Tina Myers, APRN, Steven Keone Young, APRN, Victor Solis Ojeda, APRN, and Christopher Dayoan, APRN



Left to Right: Nicole Seagriff of Community Health Centers, Inc. (Connecticut), Keala Patterson – NP Residency Evaluation Coordinator, Graduates – Tina M., Chris D., Steven Y., Victor S.O., Katy Page, APRN – Dir. of NP Residency Program & Dir. of Waiola Walk-in Clinic, Pat McKenzie - Sr. Dir. of Clinical Initiatives & Response (& Founder of WCCHC NP Residency Program), Dr. Stephen Bradley, Chief Medical Officer

FREE COVID-19 VACCINE SHOTS NOW AVAILABLE AT OUR 6 LOCATIONS!

Appointment & walk-in's are welcomed at the following locations:

Waianae Comp. Health Center (Main Campus)

86-260 Farrington Hwy., Waianae

Comprehensive Professional Pharmacy (Inside Tamera Super Market)

86-032 Farrington Hwy., Suite 101, Waianae

Appointment is required at the locations below:

Waianae (Waiola) Walk-In Clinic

86-120 Farrington Hwy., C-305A, Waianae

James & Abigail Campbell Clinic

89-102 Farrington Hwy., Suite 3000, Nanakuli

West O'ahu Community Health

599 Farrington Hwy., Suite 100, Kapolei

Waipahu Family Health Center

94-428 Mokuola Street, Suite 108-B., Waipahu

NOW YOU CAN SCHEDULE YOUR
COVID-19 TEST OR VACCINE SHOT
(WAIANAE MAIN CAMPUS LOCATION)

ONLINE AT [WCCHC.COM/COVID19](https://wcchc.com/covid19)



Ask your provider while in clinic to get your
COVID-19 vaccine shot, or call to schedule an appointment
(808) 427-3659



MAHALO FOR YOUR KŌKUA DURING COVID-19

The Health Center would like to recognize the following donors and supporters for the period July 23, 2021 to August 23, 2021.

All donors since March 2020 are listed at www.wcchc.com/giving/donations

Andrew Yirak
Chance Hookala
Detta Aki
Door Dash
Elijah Palkovic
Gary Kulesza
Gregory Puppione

Jamie Kakehi
Joshua Kent
Julie Ramos
Kathryn Tyler
Margaret Manaois
NextGen
Theresa Longanecker

In Memory of Anthony "Tony" Guerrero, Jr.:
Gregory Davis
Jittipat Pinitsakkun



Monetary donations are accepted at
www.wcchc.com/giving/donations
Call (808) 697-3457 for other donations.

**HAWAII'S
BEST
2021**
Awarded by the Star Advertiser

*Mahalo for voting Waianae Comp Health Center
"HAWAII'S BEST WALK-IN CLINICS"*

Welcome to Our Two New Providers

Dr. Adam Stivala (Psychiatry) – I was born on a small alpaca farm in Colts Neck, NJ and was raised to respect nature and hard work. I attended Syracuse University majoring in Finance but quickly became disillusioned with the employment and decided to pursue healthcare, first obtaining my Doctorate in Physical Therapy from the University of Miami and then Doctor of Medicine from American University of the Caribbean in Saint Maarten. After general psychiatry residency at Rutgers SOM in Elizabeth NJ, I attended the child and adolescent psychiatry fellowship at University of Hawaii. My treatment focuses on a holistic approach of not just medication management for mental health issues but diet, exercise, and interpersonal relationships. I look forward to meeting and working with the community of west Oahu and learning about their culture and way of life. I enjoy running, eating, woodwork, and 80's music!

Dr. Regina Nguyen (Dentistry) – Hello! I am a pediatric dentist working at Waianae Comprehensive Health Care Center. I went to dental school at the University of California, San Francisco and spent several years working and teaching residents in a community dental clinic before coming to Hawaii. The last two years, I have concentrated on treating kids on the islands of Maui, Lanai, Big Island and Oahu. I have three children ages 4, 2 and 6 months. My decisions as a dentist are guided by how I would want my own kids to be treated. My goal is to help families find easy ways to prevent cavities. If we do happen to find cavities, we can offer many ways to help treat them. We hope to see you soon if you are looking for a dentist.



Dr. Adam Stivala
Psychiatrist - Behavioral
Health Services



Dr. Regina Nguyen
Pediatric Dentist

Schedule an appointment online!

**COVID-19 TEST
or VACCINE SHOT at
WAIANAE COMP'S
MAIN CAMPUS**

86-260 Farrington Highway, Waianae

**For online scheduling, visit
WCCHC.COM/COVID19**

Call (808) 427-3659 to Schedule for a
Vaccine Shot at Any of Our 6 Locations.

Call (808) 697-3170 to Schedule a
Test at our Drive-Thru Testing in Waianae.



PATIENT ASSISTANT SERVICES



**Our team can help you apply for
Med-Quest, food stamps, financial
aid and rent/utilities assistance!**

- **Medical Insurance**
MedQUEST or Federal Marketplace
- **SNAP Benefits**
State Dept. of Human Services, Supplemental Nutrition Assistance Program (Food Stamps)
- **Financial Assistance**
State Dept. of Human Services Financial Aid
- **Sliding Fee Scale**
WCCHC's Sliding Fee Scale (SFS) Discount for Medical Care and Prescriptions
- **Rent/Utilities Assistance**
With our partners, WCCHC is able to provide assistance for rent and utilities based on availability of funds.

Monday – Friday, 8 AM – 5 PM | Saturday, 8 AM – 12 PM



**Call Us!
(808) 697-3405**

LOCATIONS

12 Clinic Sites across West Oahu with more than 150 Providers
Ph. (808) 697-3300 | wcchc.com



Serving West O'ahu Since 1972

WAIANAE - MAIN CAMPUS

• 24-hour Emergency Department & More!
86-260 Farrington Hwy., Waianae, 96792
Ph. (808) 697-3300

THE COMP AT TAMURA SUPER MARKET

• Comprehensive Professional Pharmacy
• Comp Health Connection
86-032 Farrington Hwy., Suite 101, Waianae, 96792
Ph. (808) 697-3200

WAIANAE VISION CARE

Waianae Mall
86-120 Farrington Hwy., Suite C-301, Waianae, 96792
Ph. (808) 697-3165

WAIANAE "WAIOLA" WALK-IN CLINIC

Waianae Mall
86-120 Farrington Hwy., Suite C305-A, Waianae, 96792
Ph. (808) 697-3133

SCHOOL-BASED HEALTH CENTERS

- Hale Ola Kino Maika'i
Wai'anae High School
86-251 Farrington Hwy., Waianae, 96792
Ph. (808) 697-3300
- Junior Searider Health Center
Wai'anae Intermediate School
86-626 Farrington Hwy., Waianae, 96792
Ph. (808) 697-3523
- Kamaile School-Based Dental Trailer
Kamaile Academy PCS
85-180 Ala Akau St., Waianae, 96792
Ph. (808) 697-3496
- Hale Ola
Nanakuli High & Intermediate School
89-980 Nanakuli Ave., Waianae, 96792
Ph. (808) 697-3222

JAMES & ABIGAIL CAMPBELL CLINIC

Nanakuli Village Shopping Center
89-102 Farrington Hwy., Suite 3000, Waianae, 96792
Ph. (808) 697-3900

WEST O'AHU COMMUNITY HEALTH

Kapolei Medical Park
599 Farrington Hwy, Suites 100, 208 & 208A, Kapolei, 96707
Ph. (808) 697-3800

EWA - WEST O'AHU COMMUNITY HEALTH

Child & Family Services, Main Building
91-1841 Fort Weaver Rd., Ewa Beach, 96706
Ph. (808) 697-3281

WAIPAHU FAMILY HEALTH CENTER

Filipino Community Center
94-428 Mokuola St, Suites 108B & 213, Waipahu, 96797
Ph. (808) 697-3888



WAIANAE COAST COMPREHENSIVE HEALTH CENTER

UPDATE

Adjustments Made to Our Clinic Hours, Programs and Services

COVID-19 HOTLINE

Call our hotline at (808) 697-3170 for information on COVID-19.

COVID-19 TESTING

COVID-19 Drive-Thru Testing: Register for our Wai'anae (main campus) COVID-19 Drive-Thru Testing online at wcchc.com/covid19 - or call, (808) 697-3170.

COVID-19 VACCINE SHOT

FREE to anyone, ages 12+ (A signed parental/guardian consent is required for ages 12-17)

Now you can schedule online for a COVID-19 test or vaccine shot (for Waianae/Main Campus only) at wcchc.com/covid19, or call (808) 427-3659.

COVID-19 Vaccine Shots: Appointments & Walk-in's are welcomed at our Comprehensive Professional Pharmacy (Inside Tamura Super Market) and Waianae (Main Campus), call (808) 427-3659 or schedule online for Waianae (main campus) at wcchc.com/covid19.

Ask your medical provider while in clinic to get your free COVID-19 vaccine shot - available at our Wai'anae/Main Campus, Waiola Clinic (Wai'anae Mall), James & Abigail Campbell Clinic (Nanakuli), West O'ahu Community Health (Kapolei), & Waipahu Family Health Center (Waipahu). For an appointment, call (808) 427-3659.

MAKEKE (FARMERS' & GREEN MARKET)

Makeke Farmers' & Green Market: Wai'anae at Waianae Mall, Saturdays from 8 AM - Noon; and Makeke Iki at Waianae Comp's Main Campus, Tuesdays from 9 AM - Noon

SCHOOL PANTRIES

School Pantries - Pantries at schools on the Wai'anae coast are available afterschool. Signs with hours of operation will be posted at each school and will remain open while supplies last.

KUPUNA PANTRIES

Kupuna Pantries - Opens at 10 AM and will remain open while supplies last. Find us Mondays at KS Community Learning Center in Ma'ili; Wednesdays at Wai'anae Elementary School; Thursdays at Hoa'aina O Makaha; and Fridays at Queen Lili'uokalani Children's Center (Nanakuli).

For the latest, follow Makeke Wai'anae (@makekefarmers) and the Waianae Coast Comprehensive Health Center's (@waianaecomp) Facebook and Instagram pages.

PHARMACY CURBSIDE PICK-UP

Curbside Pick-up is available at our Wai'anae, Nanakuli & Kapolei Professional Pharmacies. Call the pharmacy to make arrangements for pick-up, Waianae: (808) 697-3438, Nanakuli: (808) 697-3950, Kapolei: (808) 697-3784.

PHARMACY HOME DELIVERY

Home Deliveries are available at our Waianae, Comprehensive (The Comp at Tamura Super Market), Nanakuli (Monday - Friday) & Kapolei (Wednesday only) Professional Pharmacies. Request delivery through your Wai'anae Comp medical provider.

DON'T DELAY CARE!

Call your Waianae Comp medical provider to schedule your next visit!

TELEHEALTH (TELEPHONE & VIDEO) • IN-PERSON

NEED MEDICAL INSURANCE? CALL PATIENT ASSISTANCE SERVICES 697-3405

CURRENT SERVICES OPEN MONDAY - FRIDAY (★ Open on Saturdays also)

Primary Care Clinics

Adult Medicine
Family Practice
Pediatric/Adolescent Health
Women's Health/Family Planning
Behavioral Health (Waianae/Telehealth)
Dental Clinic
Homeless Outreach

Imaging*

Laboratory*
Nutrition Services
Pain Management
Patient Assistant Services*
Pharmacy
(Waianae, The Comp at Tamura Super Market*, Nanakuli, and Kapolei*)
School-Based Health Centers

Specialty Services

Transportation
Walk-in Clinics (Waianae & Kapolei*)
Waianae Vision Care

Our Emergency Department Remains Open 24 Hours/Day 365 Days/Year

REDUCED HOURS & SERVICES

KA'AHAA'AINA CAFE

Mon. - Fri. | 7:00 AM - 1:30 PM
Take-out only.
Call (808) 697-3488.

TRADITIONAL HAWAIIAN

HEALING CENTER
By appointment only.
Call (808) 697-3662.

WIC PROGRAM

No walk-in's, by appointment only.
Call (808) 697-3504.

TEMPORARY CLOSURES (Until Further Notice)

BEHAVIORAL HEALTH

Ewa & Kapolei

Closed until further notice. Call 697-3469 for a telehealth appointment with a Behavioral Health provider from these locations.

FITNESS GYM & CLASSES

Closed until further notice.

For updates on clinics, programs and services at the Health Center, visit our website at wcchc.com, or our @waianaecomp Facebook and Instagram pages, or call (808) 697-3300.



TELEHEALTH VIDEO & PHONE VISITS AVAILABLE! CALL (808) 697-3170

Sen. Shimabukuro

Continued from page 4

The HDOT Broadband Pilot was awarded to Hawaiian Telcom on Feb. 25, 2021. Federal transportation and broadband funding will be leveraged to pay for the construction and operation of the pilot system.

"The pandemic, when so many people had to operate virtually, made this a huge priority for the state and the federal side as well," said Sniffen. "Everybody's aligned to make sure broadband is front and center. We want to make sure we make the most of this opportunity because it's the key to our next industry for the future."

For more information, contact: HDOT at 808-587-2161, or visit hidot.hawaii.gov

Mama's Place

Continued from page 3

nesses, it has opened doors for Moniz, ironically helping her achieve her dream of creating an eatery honoring her mother and mother-in-law, by using their home-cooked recipes to serve local-style comfort food. Moniz acquired vacated retail space, opening initially with only a to-go menu sold from the small store front. However, simultaneously she began transforming a larger adjacent area into the dining room and bar area that are the finishing touches to Mama's Place – a space that will allow her to deliver on her mama's legacy.

The daily menu is fresh and flexible and always includes Puerto Rican pas-

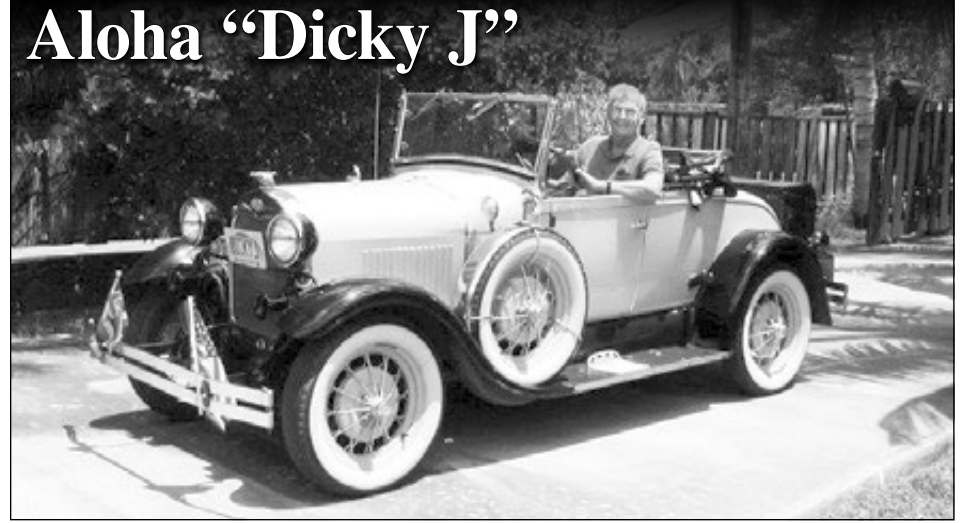
tele and gandule rice, and also a broad offering of typical local-style plates such as kalbi, fried noodles, and chicken katsu. The daily specials are where you can appreciate Moniz's desire to satisfy her customer's cravings with fusion creations like; pasteles lumpia, Rican burrito, pasteles stew spaghetti and surf-and-turf quesadilla.

With construction complete on the dining and bar areas, Mama's Place is now open for lunch and dinner. Moniz's vision is that Mama's Place is where families can share a home cooked meal

and enjoy their time together. Also don't be shy about asking for special requests, as some of Moniz's creations are inspired by unique requests from customers. Just like mamas know how to make your food just the way you like – that's Moniz's pleasure as well.

Mama's Place is located at 85-993 Farrington Hwy. (former Tacos & More location) in Wai'anae and is open from Wednesday to Sunday, (closed on Monday and Tuesday). You can also call them at (808) 699-8474 and follow them on Facebook and Instagram.

Aloha "Dicky J"



One of our "more colorful" Westside kupuna, Richard F. "Dicky J" Johnson passed away on August 2.

Many of us remember Dicky J for his many years as a political candidate (always Republican and always believing no one should run unopposed in any race), his great car and always willing to lend a hand for parades, rallies, fundraisers, etc.

He was a proud "Hoosier" (former resident of Indiana) and always made it home for the Indianapolis 500. He was also a Navy veteran, worked for the ATF and Dept. of Justice for many years.

Although you may not have agreed with his politics — he was always there to give back to his community. We'll miss you at all the functions and parades!!!



**TO ALL COVID-19 VACCINATED INDIVIDUALS...
CONGRATULATIONS!
FOR THE MONTH OF SEPTEMBER
RECEIVE A \$5 MĀKEKE
GIFT CERTIFICATE**

**FOR ANY PURCHASE AT OUR SATURDAY &
TUESDAY MĀKEKE (FARMERS & GREEN MARKET)**

Just show your vaccination card at our Information Booth.
One gift certificate per vaccinated person (age 18+).



**WAI'ANAE
& VACCINATED**

Follow @makekefarmers on Facebook
& Instagram for locations and times!



A PROGRAM OF
**WAI'ANAE COAST
COMPREHENSIVE
HEALTH CENTER**

I mua Kamehameha

Ke Ali'i Bernice Pauahi Bishop believed that education was the key to uplift her people. For over 130 years we have remained true to our founder's vision and continue to cultivate 'ōiwi leaders strong in Native Hawaiian identity that go on to serve their families and communities in an ever-changing world.

RESIDENTIAL LIFE

Our on-campus experiential living and learning community provides haumāna access to an educational program that will challenge their learning, ground them culturally and open up endless possibilities for the future.

Be a part of the legacy.
Apply for school year 2022-2023
at ksbe.edu/apply

APPLICATION DATES

Aug. 15, 2021 – Sept. 30, 2021



Kamehameha Schools®

Kamehameha Schools policy on admissions is to give preference to applicants of Hawaiian ancestry to the extent permitted by law.



SEPTEMBER 2021 Calendar of Events

Please Note:

Due to new restrictions, some events scheduled by various groups/organizations/churches have returned to virtual. Please watch for updates on our Facebook page or contact the group/organization for more information and how you can stay engaged.

September 4

10 am to 4 pm — “Mālama Our ‘Ohana” vaccine and COVID testing event at Nānākuli Village Center

September 6

Labor Day Holiday

September 18

9 am to 4 pm — Poi Dogs and Popoki Big Fix Wellness Mobile at Nānākuli Public Library's parking lot

Kaiser Permanente Hawai'i Offers Free Shuttle to Kapolei

To help seniors access health care in West O'ahu, Kaiser Permanente is launching a free shuttle to help senior residents from former Nānāikeola Clinic site to the new West O'ahu Medical Clinic site in Kapolei.

Kaiser members who have appointments at that office may use the shuttle service every Monday, Wednesday and Friday mornings starting September 8. Members who have appointments at West O'ahu Medical Office or are using other services such as pharmacy, radiology, or laboratory, may use the shuttle as well. For more information, visit kp.org

Westside Stories “What's Up” on the Westside

Clubs, Community Groups and Civic Organizations

AARP Chapter 4936 of Wai'anae
9:30 am on the first Friday of each month at the Wai'anae Community Center (Satellite City Hall). Call Patrick Maher 888-5783.

Ahupua'a O Nānākuli Homestead
General Membership Meeting — 6 to 8 pm on the second Monday of each month at Ka Wai'hona o ka Na'auao Café. Board of Directors Meeting — 6 pm on the first Monday of each month at Ho'ohuli Residence on 6th Rd. For more information, contact kapuamohala.kirkland@gmail.com or call 808-284-1564

American Legion Post 12
Call Craig McDonald - 253-8947.

Cancer Support Group
7 pm Monthly at Sacred Heart Church's Rectory Meeting Room (behind Wai'anae McDonalds). Open to all — cancer patients, cancer survivors, caregivers, family members and those who have lost loved ones to cancer. Call Linda Jose at 696-3773 for dates and more information.

Hawaii Literacy
If you can read this, you can help. Volunteer to help Leeward kids read at the Bookmobile (bit do/808book) or tutor an adult in your area.

Lanakila Meals-on-Wheels
8 am to 12 noon Monday through Friday at Wai'anae District Park's Kupuna Wellness Center (Multipurpose Room). For seniors 60 years and up. Assorted activities including outings. Meals at \$2/donation. Call Trudy at 220-6681 for more information.

Lualualei Hawaiian Civic Club
6 to 8 pm on the first Thursday of each month at the S&L Building (85-888 Farr. Hwy.) Cont. >>

Odd months — General Meeting
Even Months — Cultural Activities
Contact Ka'imī Dung at 696-7998 or by e-mail at kaimi206@gmail.com

Lualualei Lions Club
Call for meeting date and location.
Contact: Alexis Maunakea Stang at 291-1016.

Mah Jong
(American Style) Tuesday 10 am to 1 pm at Wai'anae District Park. Beginners welcomed!
Contact Coco Green at 638-9466.

Mākaha Bridge Club
11 am on Wednesdays and 10 am on Saturdays Beach House By 604 (Piliiaau Army Rec Ctr-Rest Camp)
Call Kay Smith at 695-7844

Mōākaha Red Hatters
2nd Monday of each month at various restaurants along the Westside. If you would like to join this club, call “Queen” Gerry Ottinger at 225-7424.

Mākaha Hawaiian Civic Club
6 pm on the 2nd Wednesdays in September and November via Zoom
For more information, e-mail Lu Lankford-Faborito at kaluhiokalanik@aol.com

Mākaha Quilting & Crafts
9:00 am to 11:30 am each Thursday at the Wai'anae Community Center (Satellite City Hall).
Contact Gerry Ottinger at 225-7424.

Nānāikapono Hawaiian Civic Club
5:30 pm on the 2nd Wednesday (Bi-monthly) Jan, Mar, Apr, May, July, Sep & Nov via Zoom.
For Zoom link & information email: nanaikaponohccinfo@gmail.com

Nānākuli-Mā'ili Neighborhood Board #36
7 pm on the 3rd Tuesday of the month via Zoom from Kapolei Hale.
Call Neighborhood Commission Office at 768-3710 for Zoom link and more information.

Veterans of Foreign Wars (VFW) Post #849
Contact Rocky Naeole at 265-3419.

Wai'anae Coast Aikido
Classes held daily for children, teens and adults 84-256 Mākaha Valley Road
Call 695-9520 or 808-202-6171

Wai'anae Coast Neighborhood Board #24
6:30 pm on the 1st Tuesday of each month via Zoom from at Wai'anae District Park.
Call Neighborhood Commission Office at 768-3710 for Zoom link and more information.

Wai'anae Coast Rotary Club
12 noon on the 2nd and 3rd Tuesdays of month via Zoom.
Contact Karl Sadanaga at 258-8470 for more info and Zoom link..

Wai'anae Farmer's Market
8am to 12 Noon every Saturday at Wai'anae Mall. Call 697-3599.

Wai'anae Hawaiian Civic Club
6:30 pm on the second Tuesdays of every other month (Feb., Apr., June, Aug., Oct., Dec.)
Contact Rochelle Kawelo at 551-5861.

Wai'anae Lions Club
Call Connie Burchett at 228-5608 (cell) or 696-2982 (home) for more information on club activities or to get involved.

Wai'anae Public Library Book Club
6 pm on the 3rd Wednesday of each month via Zoom. Call 697-7868 for more information.

Women of Wai'anae
4 to 6 pm on the third Thursday of every even month. Contact Karen Young at 388-8828.

CHECK IT OUT...

LABOR DAY!

MONDAY, SEPTEMBER 6TH

PLEASE NOTE: In accordance with the latest public health guidance, we are asking customers to:

- Mask or Face Covering Required for Entry
- Remain at home if you have a fever, cough, or breathing difficulties
- If you bring your own bags, please bag your own items

PLEASE MAINTAIN SOCIAL DISTANCE AND STAY 2 CARLENGTHS

FASTLANES ARE HERE!

PLEASE NOTE NEW SUMMER HOURS

THE WAIANAE STORE
OKIMOTO CORP.
85-863 FARR. HWY. • 696-3131
7:00 AM - 9:00 PM EVERYDAY

NANAKULI SUPER
87-2090 FARR. HWY. • 668-2055
7:30 AM - 8:00 PM EVERYDAY

SPECIAL EARLY KUPUNA HOURS:

(AGES 60 & ABOVE)

WAIANAE STORE
6:00 AM TO 7:00 AM

NANAKULI SUPER
7:30 AM TO 8:30 AM

The Law Office of Thomas C. Zizzi

We hope that you are all staying well. For your continued safety, we provide face-to-face meetings using the most up to date conferencing procedures. Our office is also pleased to always offer free telephone consultations.

Call today for your free initial consultation.

INSURANCE CLAIMS
COMPLETE ESTATE PLANNING
Wills, Trusts & Probate Administration & Litigation, Powers of Attorney, Advance Health Care Directives, Conservatorship/Guardianship Proceedings

REAL ESTATE & BUSINESS/CORPORATIONS
Transactions, Formations & Litigation

LANDLORD/TENANT LAW
PERSONAL INJURY

(808) 696-2200
www.leewardlegal.com

“No kau pono, mālama pono ‘ike kānāwai.”
On your behalf, to protect your legal rights.

Westside Stories

"The Pride of the Westside"

A monthly newspaper serving the communities of Nānākuli, Mā'ili, Wai'anae and Mākaha

Subscription Form

Name _____

Address _____

City _____ State _____ Zip _____

Please fill out form, enclose payment of \$35 (for 12 issues) and mail to: Westside Stories - P.O. Box 4027 - Wai'anae, Hawai'i 96792

WE SEND ALL OF OUR SUBSCRIPTIONS VIA 1ST CLASS MAIL

Please Check here if this is a gift subscription. We will enclose a card with your name and a brief message with the first issue informing the recipient who sent them this wonderful gift subscription to *Westside Stories*

Sender(s) Name _____

Address _____

City _____ State _____ Zip _____

Message: _____

Please call (808) 696-7978 for information on mailing subscriptions outside of the U.S.

La Ho'ihoi Ea Wai'anae
Continued from front page

of the Hae Hawa'i ran in unison with other La Ho'ihoi Ea events across the pae 'aina (islands). Paul Kalani "Bob-

oy" Kaawa-Flores Jr. narrated for us the events that unfolded in 1843 and painted a vivid accounting of emotions that Kamehameha III had endured. Accepting the kuleana for the group in raising our Hae Hawai'i were Lynette Cruz, Lena

Spain-Suzuki and Nikaulz Kūkailimoku Guzman-Simpliciano. Activities throughout the day included education booths engaging in mo'olelo (stories) and mo'okū'auhau (genealogy) of Kamehameha III-Kauikeaouli (shared by Kaulana Eli), the importance of kalo and sustainability (shared by Molekumu), Papa Ku'i 'Ai (poi pounding board shared by Daybreak Church), Wai'anae Coast Ahupua'a History (shared by the Hawaiian Civic Club), Kaua Kio or Sham Battle (shared by the Queen Lili'uokalani Royal Guards). The lāhui resources included organizations such as Kokua Project sharing information on their free martial arts classes, creative/life skill workshops and thrift store. Mālama Mākua shared their mission to bring about the return of sacred Mākua from the US military for culturally appropriate use and how to reinstate the Hawaii Kingdom law (shared by

Henry Noa). Planting seeds of knowledge is not only benefiting for the makua and kupuna, but also for the kamali'i (children). Over 150 kamali'i attended throughout the day (adhering to COVID-19 guidelines) to participate in workshops such as 'olelo Hawai'i (led by Nā Kumu Leonani and Alohi), mo'olelo (led by Pae-pae Pōhaku), pū ohe (nose flute led by Nanipua Peterson), mele (shared by Kalani Hiapo) and kui lei (stringing lei led by Auntie Zee and Auntie Robin). Leahi Panui-Moe and her amazing team hosted the makana (gifts) station, providing each participant a backpack filled of school supplies, goodie bags, shorts, undergarments, slippers and bentos. To see the reaction of our kamali'i as they didn't expect such a treat was priceless. Donations from generous organizations and our community made our makana tent possible, Mahalo Nui!



Ali'i Aimoku Shad Kane and members of the Royal Order of Kamehameha I arrives.

This is the year I appreciate the little things.

This is the year I make 65 just another number.




Get more with
HMSA Akamai Advantage
Dual Care (PPO SNP) for \$0.

- ▶ \$2,500 in dental services, including exams, cleanings, X-rays, fillings, and more.
- ▶ \$75 every three months for CVS health and wellness products.
- ▶ Telehealth visits, including HMSA's Online Care®.
- ▶ Care you need from doctors you choose.
- ▶ Support from health coordinators and more!

Enroll today. We're here to help.

 hmsa.com/dualcarehi

 Call 948-6235 or 1 (800) 693-4672
TTY: 711
Daily, 8 a.m.-8 p.m.

To enroll in HMSA Akamai Advantage Dual Care, you must have both Medicare and QUEST Integration (Medicaid). HMSA Akamai Advantage® is a PPO plan with a Medicare contract. Enrollment in HMSA Akamai Advantage depends on contract renewal. Amwell® is an independent company providing hosting and software services for HMSA's Online Care platform on behalf of HMSA. H3832_4002_1010_294978_21_M



Kupuna PANTRY

AUGUST - DECEMBER 2021

ALL PANTRIES WILL OPEN AT 10:00 AM & WILL REMAIN OPEN UNTIL SUPPLIES LAST

MONDAY Kamehameha Schools Community Learning Center at Ma'ili (87-790 Kulakou Street)	WEDNESDAY Wai'anae Elementary School (Across from Pili'au Park) (85-220 McArthur Street)
THURSDAY Hoe 'Aina o Mākaha (Next to Mākaha Elem. School) (84-766 Lahaina Street)	FRIDAY Queen Lili'uokalani Children's Center - Nānākuli (87-1876 Farrington Highway)

CLOSED FOR THESE HOLIDAYS:
Labor Day 9/6, Veterans Day 11/11, Thanksgiving 11/25, Christmas Eve 12/24, New Year's Eve 12/31

SPONSORED BY CITY & COUNTY OF HONOLULU, IN PARTNERSHIP WITH WAIAANAE COMMUNITY, KAMEHAMEHA SCHOOLS, HOE 'AINA O MĀKAHA, AND LILI'UOKALANI TRUST.

SCHOOL PANTRY

Open while supplies last

MONDAY • 2:00 PM-2:45 PM MA'ILI ELEMENTARY SCHOOL (87-360 Kulaupuni St., Waiānae)
TUESDAY • 2:00 PM-2:45 PM WAIANAE ELEMENTARY SCHOOL (85-220 McArthur St., Waiānae)
WEDNESDAY • 2:00 PM-2:45 PM MAKAHA ELEMENTARY SCHOOL (84-200 Ala Hanalei Pl., Waiānae)
THURSDAY • 1:45 PM-2:30 PM NANA'IKAPONO ELEMENTARY SCHOOL (89-153 Mano Ave., Waiānae)
FRIDAY • 2:00 PM-2:45 PM KAMAILE ACADEMY PCS (85-180 Ala Akua St., Waiānae)

SPONSORED BY THE HAWAII FOODBANK AND HOMO'OPONO, IN PARTNERSHIP WITH THE STATE OF HAWAII'S DEPARTMENT OF EDUCATION.

PVT donates iPads to NHIS robotics program



The NHIS robotics program is now in possession of eight lightly-used Apple iPads, courtesy of PVT. The iPads had been used by PVT employees and are in excellent working order, but were being replaced by newer versions.

It is expected that the iPads will be used by the NHIS robotics team and other members of the program when they travel to competitions or work remotely.



iPads Will Travel — PVT contributed 8 lightly-used iPads for use by the NHIS robotics program.

NPAC proves the show really must go on

The pandemic brought a halt to many things we used to take for granted. But some things must go on, regardless.

The Nānākuli Performing Arts Center has managed to keep live performances alive — and yet socially distanced — by using Zoom to stage its shows.

Two recent shows were *The Little Mermaid* followed by *Summer Splash 2021*, a live-to-tape streaming show featuring students from grades 3 to 12 from 11 different schools. Audiences live-streamed the opening night performance or watched it later on video-on-demand.

PVT is a long-time supporter of NPAC. It's great to see the creativity, talent and resourcefulness of NPAC Director Robin Kitsu and all the kids of NPAC.



PVT aims to have all employees vaccinated against Covid-19

PVT is near to having all of its employees — all who work in the office and nearly all who work on the landfill — vaccinated against Covid-19.

There's an ebb and flow to where the most Covid cases occur. As of late, the Wai'anae Coast has recorded the highest number of cases of all areas on Oahu. Wai'anae also has one of the lowest vaccination rates on the island, between 35% and 45%.

PVT encourages its employees to get vaccinated not just to protect themselves against the virus, but also to protect their co-workers and others by helping to reduce the spread of the virus.

Those who visit PVT are also asked to undergo a temperature check at the main gate and to wear a mask while on the grounds of the facility.



Temperature Check — Visitors to PVT must have their temperatures taken before being allowed into the PVT facility.

PVT school supplies program benefits elementary schools

Elementary schools in Nānākuli have welcomed students back to school—or are trying their best to do so. The resurgence of COVID-19 has complicated things. We salute our public school teachers for doing their best to keep students and their families—and themselves—safe in these perilous times.

Regardless of the uncertainty, one thing is for sure. Students will need supplies, whether they're working at home or in the classroom. And as sure as the sun shines in Nānākuli, PVT is helping to equip students as part of the company's annual school supply initiative. This year hundreds

of pens, composition books, colored pencils, glue, binders, and other supplies are going out to Nānākuli students.



Pallets of supplies for Nānākuli elementary schools await pickup at PVT Land.



The Show Must Go On — NPAC has kept its program going through the pandemic by using Zoom to stage productions that include *The Little Mermaid* and *Summer Splash 2021*.

PERSONAL LOANS

AS SIMPLE AS...

1
as low as
3.50%
APR*

YEAR TERM

2
as low as
4.50%
APR*

YEAR TERM

3
as low as
5.50%
APR*

YEAR TERM

APPLY AT PEARLHAWAII.COM

 **PEARL HAWAII**
FEDERAL CREDIT UNION Upgrade You.

pearlhawaii.com | 73.PHFCU (737.4328) | WAIANAE | WAIPIO | EWA | AIRPORT | PEARL HARBOR | HONOLULU

*Annual Percentage Rate (APR). The loan rates advertised are "A" Tier loan rates in our Multi-Tiered Loan Rate Program. Other rates and terms are available. Other terms, conditions, and restrictions may apply. Visit any of our branches for more information. May not be used for a business loan. Borrower must be 18 years of age or older. Promotion is subject to change or cancellation without prior notice. Payment Examples (1 year at 3.50% apr is 12 monthly payments of \$84.91. 2 year at 4.50% apr is 23 monthly payments of \$43.42; 1 of \$43.34. 3 term at 5.50% apr is 35 monthly payments of \$30.20 + 1 of \$30.02). Federally insured by NCUA.