

Revolutionizing Workplace Safety with GPTPrevent Powered by OpenAI



Harness the power of artificial intelligence to create safer working environments and mitigate risks with GPTPREVENT.COM – the cutting-edge platform propelled by OpenAI's GPT-4.

In an era where workplace safety is more crucial than ever, technological advancements are paving the way for significant improvements in how organizations manage occupational health and safety (OHS).

GPTPrevent, powered by OpenAI's sophisticated GPT technology, is at the forefront of this revolution, offering a suite of AI-driven tools that enhance safety protocols and reduce the risk of workplace incidents.

In today's dynamic work environments, managing safety and mitigating risks are more critical than ever. GPTPREVENT.COM, powered by OpenAI's advanced GPT-4 technology, stands as a cutting-edge platform designed to revolutionize workplace safety. This platform leverages the immense capabilities of artificial intelligence to foster safer working environments and effectively address a variety of occupational hazards.

[Get Started](#)

[Learn More](#)

Powered by  OpenAI

 by Mario Deshaies



Table of contents

- [The Impact of OpenAI's Large Language Models on Businesses](#)
 - [The Impact of OpenAI's Large Language Models \(LLM\) on Modern Businesses](#)
 - [Preventera's AI-Powered Workplace Safety Mission](#)
 - [ChatGPTPrevent AI-Powered Assistance for Workplace Safety](#)
 - [Key Features of ChatGPTPrevent for Workplace Safety](#)
 - [Advanced Educational Content](#)
 - [Insightful Case Studies and Best Practices](#)
 - [Latest Research and Development](#)
 - [Professional Collaboration Space](#)
 - [Integration of OpenAI's GPT-4](#)
 - [AI-Powered Safety Solutions](#)
 - [Emergency Procedure Training](#)
 - [Compliance and Regulation Assistance](#)
 - [Risk Assessment and Mitigation](#)
 - [Smart Protective Equipment](#)
 - [Environmental Monitoring and Sustainability](#)
 - [The Future of Workplace Safety](#)
-

The Impact of OpenAI's Large Language Models on Businesses



- **Revolutionizing Business Processes:** OpenAI's large language models (LLM) are automating and customizing solutions at an impressive speed.
- **Development Milestones:** GPT-3, DALL-E, and ChatGPT have showcased remarkable text and image generation capabilities.
- **Financial Support and Strategic Positioning:** OpenAI's substantial financial backing from influential investors like Microsoft has fueled its technological innovation and leadership in the LLM sector.
- **Business Advancements:** OpenAI's tools and libraries, such as GPT-4 APIs, facilitate the rapid development and fine-tuning of specialized LLM for specific business contexts.
- **Concrete Business Applications:** LLM from OpenAI are streamlining document automation, providing rapid and accurate assistance, and enhancing communication coherence within organizations.
- **Ethical Considerations:** Verifying the reliability and security of information generated by LLM, the necessity of technical expertise for LLM optimization, and handling ethical considerations are crucial for businesses integrating LLM.



The Impact of OpenAI's Large Language Models (LLM) on Modern Businesses

1

Significant Advances in LLM Development

OpenAI has achieved major milestones with models like GPT-3, DALL-E, and ChatGPT, demonstrating remarkable text and image generation capabilities.

2

Open and Collaborative Approach

OpenAI's strategy of sharing knowledge and collaborating closely with the scientific community has enriched its developments and reinforced model reliability and performance.

3

Financial Support and Strategic Positioning

With support from influential partners like Microsoft, OpenAI has secured the resources to push the boundaries of AI technology, solidifying its position as an industry leader.

Preventera's AI-Powered Workplace Safety Mission



1 AI-Powered Assistance for Workplace Safety

Providing advice and best practices for accident prevention, ergonomic work, risk management, and employee well-being.

2 Data Analysis and Trends in Workplace Safety

Identifying crucial trends in workplace health and safety to prevent accidents and incidents.

3 Training, Awareness, and Personalized Responses

Offering resources for training and awareness in workplace safety and providing personalized responses tailored to specific needs.

4 Continuous Updates and User-Friendly Interface

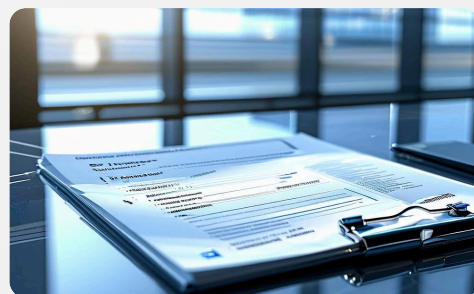
Staying updated with the latest workplace safety information and developments to provide current and relevant advice through a user-friendly interface.

AI-Powered Assistance for Workplace Safety



Data Interpretation and Analysis

The AI assistant interprets and analyzes large volumes of workplace safety data, identifying hidden trends and potential risks.



Content and Documentation Generation

Automatically generates security reports, emergency procedures, and custom training based on specific business needs and regulations.



Real-time Interaction and Support

Provides instant responses to safety inquiries, offers guidance, and directs users to appropriate resources.

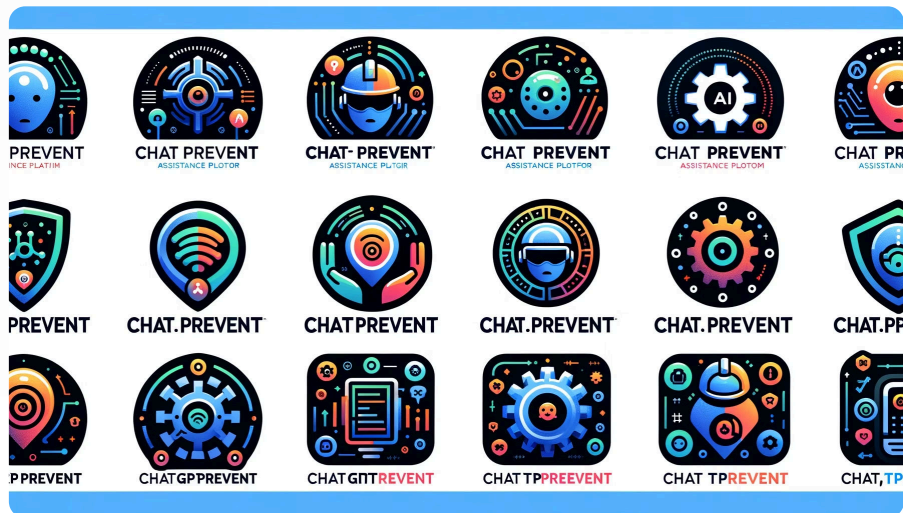


Training and Awareness

Conducts interactive training sessions using simulated scenarios to educate employees on emergency response and reinforce safety culture.

ChatGTPrevent AI-Powered Assistance for Workplace Safety

The AI assistant "ChatGTPrevent refers to a specific application of artificial intelligence powered by OpenAI, tailored for functions related to risk prevention and workplace safety.



ChatGTPrevent interprets and analyzes workplace safety data to identify hidden trends and analyzes large volumes of safety-related data, generating security reports, emergency procedures, and custom training based on specific business needs and regulations.

The AI assistant also provides instant responses to safety inquiries, offers guidance, and conducts interactive training sessions using simulated scenarios to educate employees on emergency response and reinforce safety culture.

Automating documentation management reduces administrative workload, while the AI's ability to offer instant responses in emergency situations enhances efficiency and safety.

It uses up-to-date data and learning algorithms to provide accurate and consistent information, reducing the risk of human errors and enhancing the efficacy of safety training programs.

Overall, the "ChatGPT" AI assistant ChatGTPrevent is a powerful solution that uses artificial intelligence to proactively manage safety, providing immediate support, accurate analyses, and promoting a safer work environment.

Key Features of ChatGPTPrevent for Workplace Safety

- **Real-Time Hazard Identification and Alerts:** ChatGPTPrevent continuously analyzes workplace data in real-time to identify potential hazards and unsafe conditions, providing immediate alerts to relevant personnel.
- **Incident Reporting and Analysis:** Simplifies and streamlines incident reporting, analyzing reports to identify trends and contributing factors for safety issues.
- **Regulatory Compliance and Documentation:** Automatically updates safety protocols based on regulations, generating compliance reports to ensure adherence to safety laws.
- **Training and Education:** Personalizes training modules, delivers interactive sessions, and uses AI-driven quizzes to reinforce learning and assess employee understanding.
- **Risk Assessment and Management:** Performs risk assessments, suggests mitigation strategies, and helps management visualize risks through dashboards or reports.
- **Enhanced Communication and Collaboration:** Serves as a central hub for safety-related communication, automating routine communications and facilitating better collaboration.
- **Support for Mental Health and Wellbeing:** Offers support for mental health through resources and proactive monitoring for signs of employee burnout.
- **Feedback and Continuous Improvement:** Gathers feedback from employees, allowing for continuous improvement in safety strategies.

Advanced Educational Content

Introductory Modules

Designed for professionals new to AI in workplace safety, these modules provide a comprehensive overview of the fundamental concepts, applications, and best practices for leveraging GPT-4 in HSE.

Continuous Learning

With regular updates and access to the latest research, these modules ensure professionals remain at the forefront of AI advancements in workplace safety, fostering a culture of continuous learning and improvement.

1

2

3

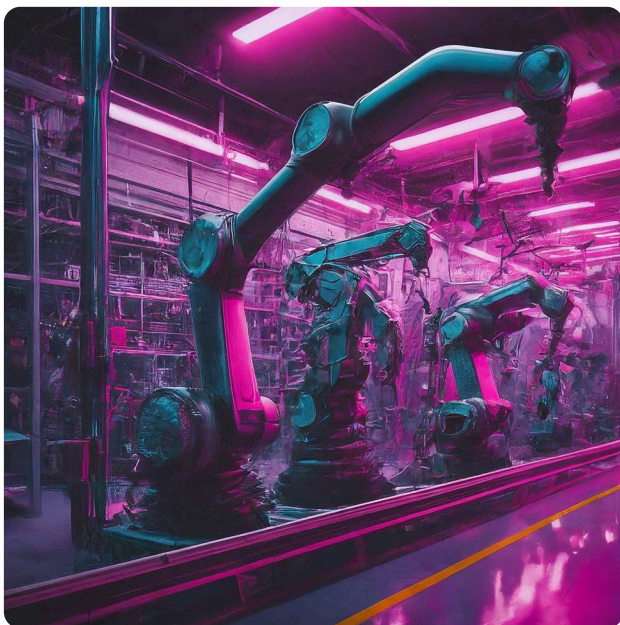
Specialized Training

Tailored for experienced HSE professionals, these modules delve into advanced techniques and strategies for utilizing GPT-4 to tackle complex challenges across a wide range of industries and scenarios.

Insightful Case Studies and Best Practices

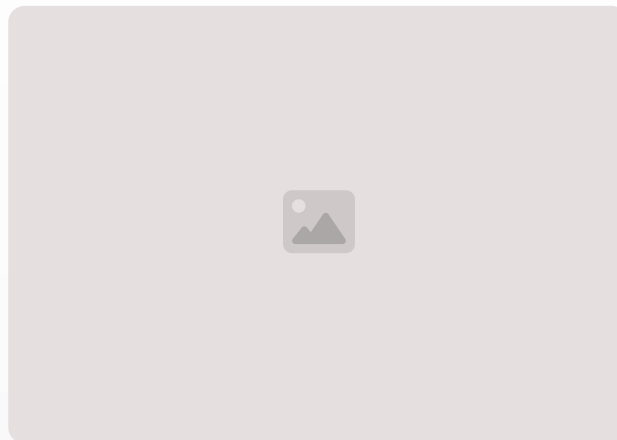
Manufacturing

Explore how GPT-4 has been implemented in manufacturing facilities to enhance risk assessment, predictive maintenance, and worker safety through natural language processing and machine learning.



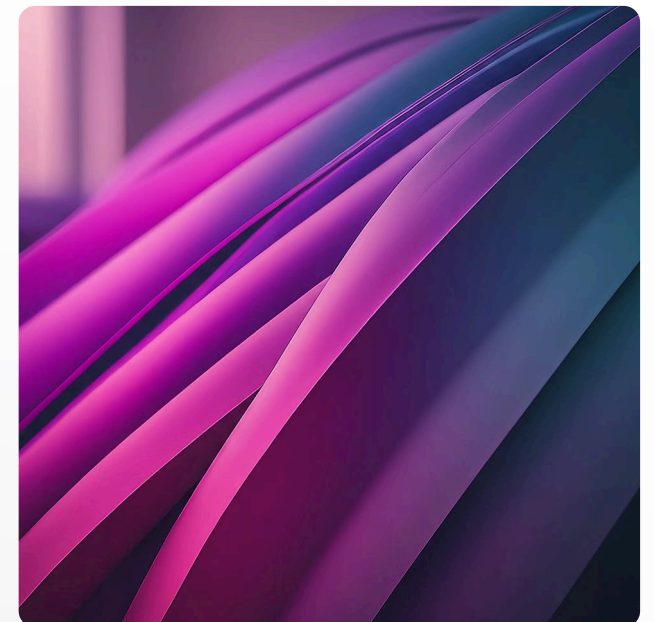
Construction

Discover how the construction industry has leveraged GPT-4 to streamline site inspections, identify potential hazards, and provide real-time safety guidance through natural language interactions.



Healthcare

Learn how GPT-4 has been instrumental in healthcare settings, ensuring patient and staff safety through intelligent monitoring, risk mitigation, and compliance with industry regulations.



Latest Research and Development

1 Natural Language Processing

Stay updated on the latest advancements in natural language processing, enabling more accurate and context-aware interactions between GPT-4 and HSE professionals.

3 Ethical AI

Gain insights into the ongoing research on ethical AI, ensuring that the implementation of GPT-4 in workplace safety adheres to the highest standards of transparency, fairness, and accountability.

2 Machine Learning Algorithms

Explore new machine learning techniques that enhance GPT-4's ability to learn from data, identify patterns, and make intelligent predictions for proactive risk mitigation.

4 Collaborative AI

Discover the latest developments in collaborative AI, where GPT-4 seamlessly integrates with human expertise to create synergistic solutions for complex HSE challenges.

Professional Collaboration Space



Connect

Join a global community of HSE professionals, sharing insights, best practices, and fostering collaboration in the application of GPT-4 for workplace safety.



Discuss

Engage in discussions, ask questions, and explore new ideas with experts and peers, unlocking the full potential of GPT-4 in addressing complex HSE challenges.



Innovate

Contribute to the development of innovative solutions by sharing your ideas and experiences, driving the evolution of GPT-4's capabilities in workplace safety.



Accelerate

Accelerate your professional growth by staying ahead of the curve, gaining early access to emerging technologies, and shaping the future of AI in HSE.

Integration of OpenAI's GPT-4

1

Initial Training

Leveraging OpenAI's robust training on diverse datasets, GPT-4 acquires a strong foundation in understanding and generating natural language, laying the groundwork for specialized training.

2

Specialized Fine-Tuning

Through fine-tuning with specific data related to workplace health and safety, GPT-4 becomes adept at generating precise, relevant content for HSE applications.

3

Reinforcement Learning

Engaging with HSE experts, GPT-4 undergoes reinforcement learning, refining its responses to ensure accuracy and appropriate contextualization for various HSE scenarios.

4

Practical Applications

With its advanced capabilities, GPT-4 guides training, provides emergency instructions, handles compliance inquiries, and more, revolutionizing workplace safety solutions.

AI-Powered Safety Solutions



Safety KPI Analysis

Utilizing data to monitor and improve safety performance across organizations.



Construction Safety Insights

Tailored recommendations to improve safety in construction environments.



Data Visualization Impact

Facilitating better decision-making with impactful safety trend visualizations.



Automated Regulatory Training

Delivering up-to-date safety training modules on regulations and compliance.

Emergency Procedure Training

Traditional Training	GPT-4 Powered Training
Static manuals and guides	Dynamic, interactive simulations
Limited scenarios	Unlimited variations
One-size-fits-all approach	Personalized guidance
Time-consuming updates	Instant updates

GPT-4's integration into GPTPREVENT.COM transforms emergency procedure training, offering dynamic, interactive simulations tailored to specific scenarios and individual needs, ensuring personnel are prepared for any situation.

Compliance and Regulation Assistance

▼ How does GPT-4 aid in compliance?

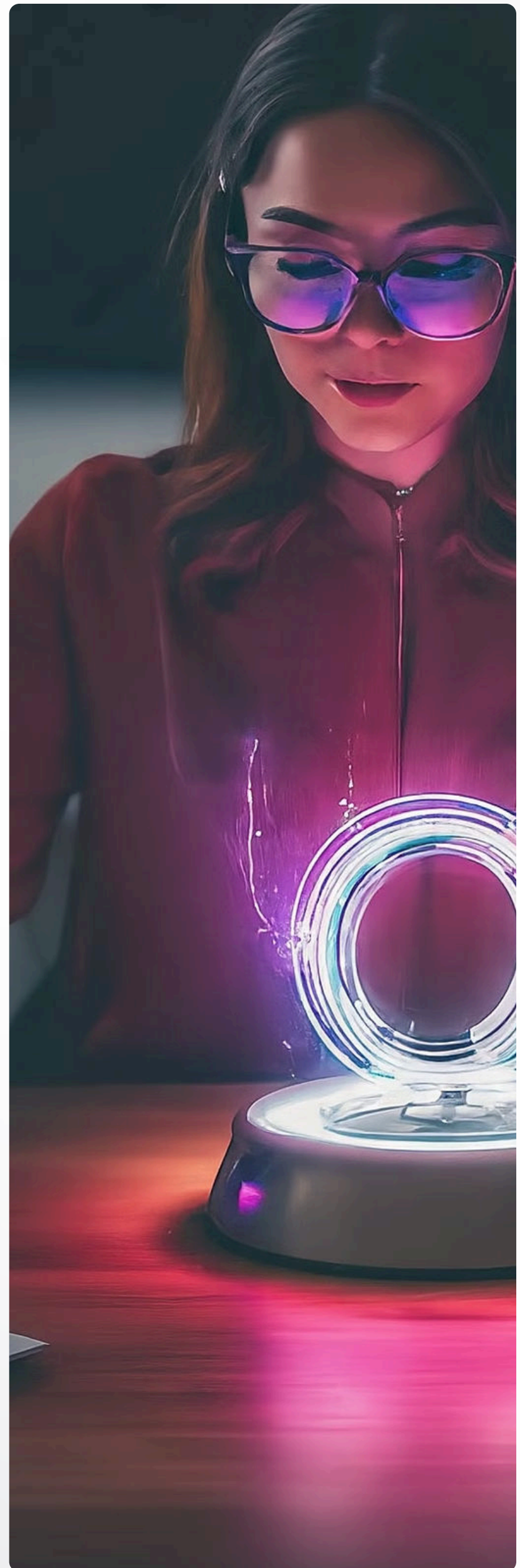
GPT-4's natural language processing capabilities enable it to comprehend complex legal texts and safety regulations, distilling them into clear and understandable guidance. It can provide detailed explanations, answer specific queries, and highlight potential areas of non-compliance, ensuring organizations stay compliant while prioritizing worker safety.

▼ Can GPT-4 handle industry-specific regulations?

Absolutely. Through specialized fine-tuning, GPT-4 can acquire in-depth knowledge of regulations specific to various industries, such as construction, manufacturing, or healthcare. This tailored expertise allows it to provide relevant and accurate compliance assistance within the context of each industry's unique requirements.

▼ How does GPT-4 stay updated with regulatory changes?

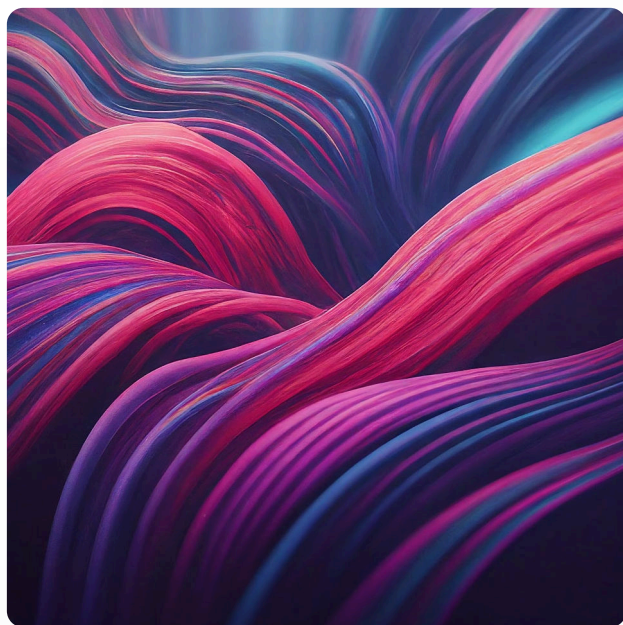
- Continuous monitoring of regulatory updates
- Seamless integration of new information into its knowledge base
- Proactive notifications to users about significant changes



Risk Assessment and Mitigation

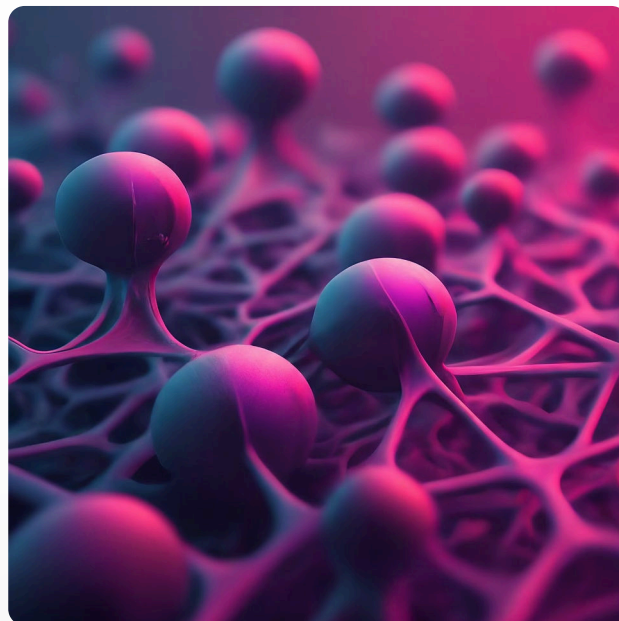
Data Collection

GPT-4 can process and analyze vast amounts of data from various sources, including sensor data, incident reports, and environmental monitoring systems, providing a comprehensive understanding of potential risks.



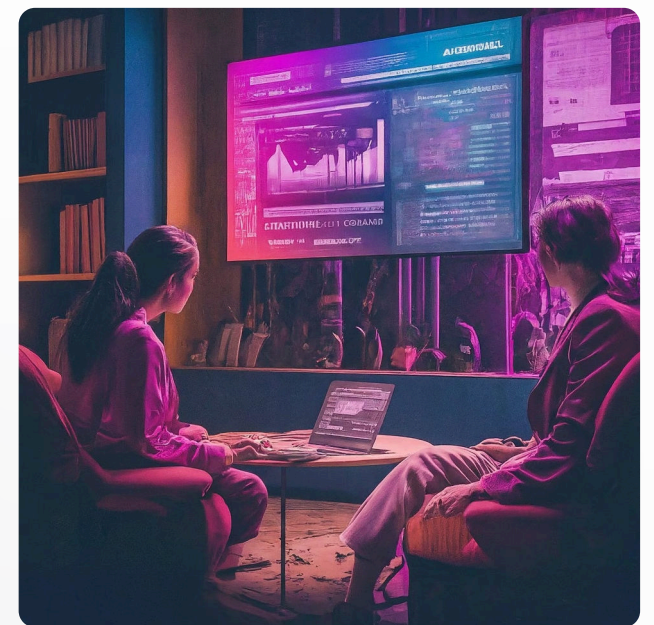
Risk Modeling

Leveraging its machine learning capabilities, GPT-4 can develop advanced risk models, identifying patterns, predicting potential hazards, and enabling proactive risk mitigation strategies.

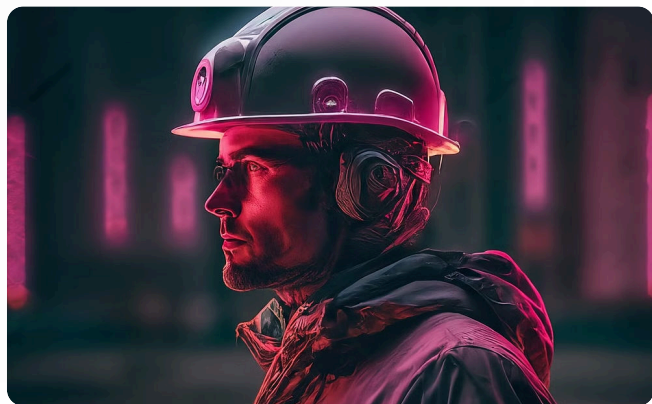


Recommendations

Based on its comprehensive analysis, GPT-4 can provide tailored recommendations for risk mitigation, including procedural changes, equipment modifications, and training programs, ensuring a holistic approach to workplace safety.

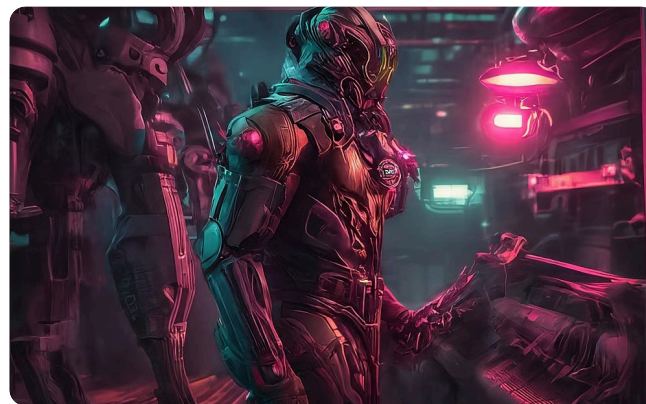


Smart Protective Equipment



Augmented Reality Displays

Integrating GPT-4 into smart protective equipment like hard hats and safety glasses, workers can receive real-time visual guidance, hazard alerts, and safety instructions through augmented reality displays.



Exoskeleton Assistance

GPT-4 can control exoskeleton suits equipped with sensors and actuators, providing physical assistance and injury prevention during strenuous tasks, while monitoring worker fatigue and stress levels.



Intelligent Breathing Apparatuses

For emergency responders, GPT-4 can integrate with intelligent breathing apparatuses, providing real-time guidance, monitoring air quality, and optimizing evacuation routes based on environmental conditions.

Environmental Monitoring and Sustainability

Data Collection

GPT-4 can process data from various environmental sensors, monitoring air quality, water quality, and carbon emissions, providing a comprehensive understanding of the workplace's environmental impact.

1

2

Analysis and Modeling

Through advanced analysis and modeling techniques, GPT-4 can identify patterns, predict potential environmental hazards, and develop strategies for minimizing the workplace's ecological footprint.

3

Sustainability Recommendations

Leveraging its deep understanding of environmental factors, GPT-4 can provide tailored recommendations for implementing sustainable practices, reducing waste, and promoting a greener workplace culture.

4

Continuous Improvement

Through reinforcement learning and continuous data analysis, GPT-4 can adapt and refine its recommendations, ensuring a constant drive towards environmental sustainability and workplace safety.

The Future of Workplace Safety

"The integration of OpenAI's GPT-4 into GPTPREVENT.COM represents a paradigm shift in the way we approach workplace safety. By harnessing the power of cutting-edge artificial intelligence, we can create safer, more sustainable working environments while fostering a culture of continuous improvement and innovation."

- [Your Company Name] Chief Safety Officer

As GPTPREVENT.COM continues to evolve and push the boundaries of what's possible, it stands as a beacon of hope for a future where technological advancements and human ingenuity converge to create a safer, more secure world for all workers.

