

SOUVENIR PROGRAMME

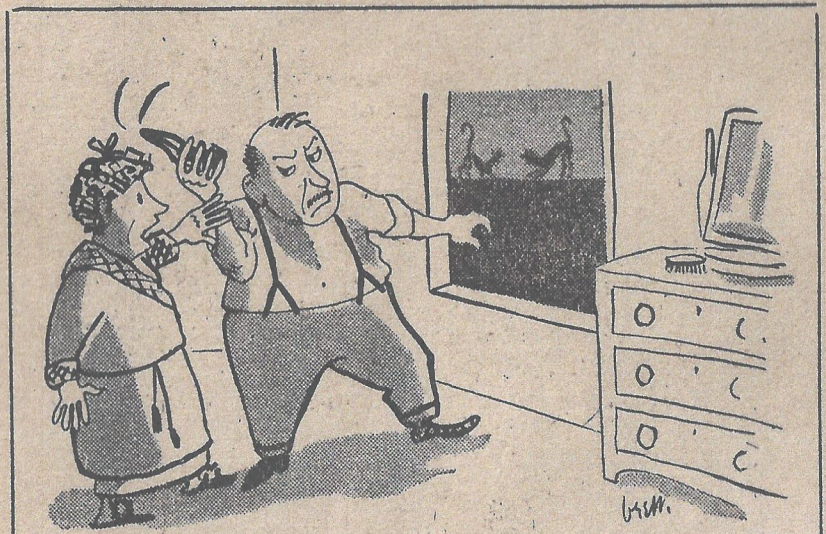


LANCASTER PARK

Saturday 28th. August 1948

PRICE SIXPENCE

- AUSTRALIA v NEW ZEALAND -

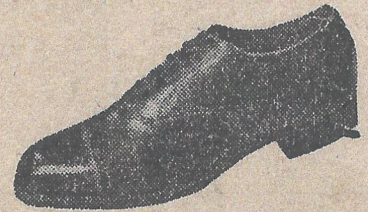


"Don't throw that one, Henry, it's an O'B Premier Shoe!"

Good design and skilled workmanship are the reasons why you get long and comfortable wear from every pair of O'B Premier Shoes.

O'B

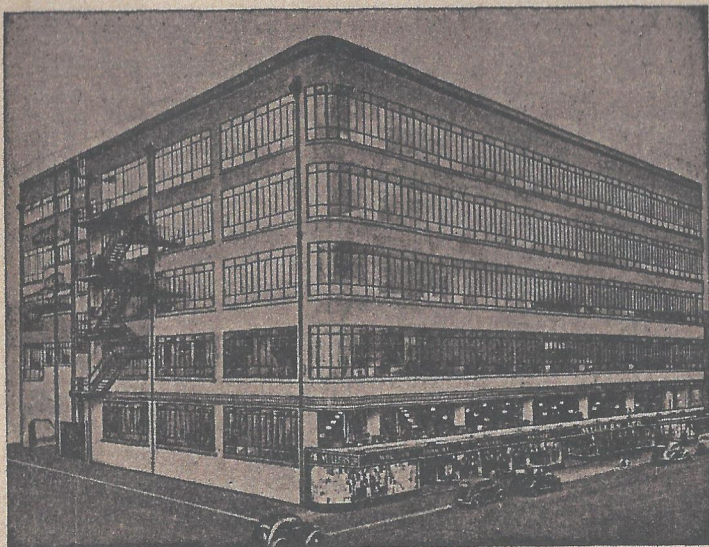
PREMIER SHOES FOR MEN AND BOYS



MADE BY M. O'BRIEN AND CO. LTD., CHRISTCHURCH.

OB8

Printed and Published by ARISTO PRESS, 10 Victoria Street, Christchurch.



MILLERS LIMITED

- Woollen Spinners
- Weavers
- Finishers
- Manufacturers of Apparel
- Specialists in Spectator-Sports
Clothing

P.O. Box 1242

CHRISTCHURCH

Phones 33-258 and 33-259

NEW ZEALAND FOOTBALL ASSOCIATION

President: Rt. Hon. Walter Nash.

Hon. Treasurer: Mr W. L. Wilson.

Secretary: Mr W. B. Hicks.

Council:

Messrs L. Munro (Chairman), T. W. Dick (Deputy Chairman), E. McQueen, C. Hall, W. A. Chapman, B. S. Connor, A. J. Costelloe, J. Houston, W. J. Vainey, B. T. Martin (N.Z.R.A.), F. M. Smyth (Secondary Schools), J. Y. Walls Jnr. (University Association), A. Harrison (Junior), C. A. Walker (Primary Schools) and F. Houston (Training College).

Selector: Mr T. W. Dick.

CANTERBURY FOOTBALL ASSOCIATION.

President: Mr. J. E. Jones.

Secretary-Treasurer: Mr. C. Sanderson.

Management Committee:

Messrs. R. S. Smith, S. Eyre, C. Frew, W. McFall, D. McGlinchy, J. J. Porter, J. White, R. Black, K. F. Jones, A. W. Pritchard (Referee), E. Bilcliff (Junior Management Committee).

Famous Bottled Ales & Stout

Crown Champion

Ward's Clear

Ward's Invalid Stout

New Zealand Breweries Ltd.

Christchurch

WHEN YOU WANT A
WINNER IN WINTER COATS

COME DIRECT TO GLASSON'S
SMART ENGLISH TWEED.
SPECIAL VALUE TO
FOOTBALL FOLLOWERS AT

£5-19-6

Get a coat that will keep you warm and
smart at many matches for many years.

Glassons Warehouse

96 LICHFIELD STREET.

COCKRAM

CAR SALES

515 COLOMBO ST., Cnr. MOORHOUSE AVE.

— OFFER YOU —

A SPORTING DEAL

BUYING, SELLING or TRADING.

PERSONALITIES



Mr. C. Sanderson.

Secretary-Treasurer, Canter-
bury Football Association.



Mr. J. E. Jones.

President, Canterbury Football
Association.



J. J. Porter.

Management Committee.



E. Bilcliff.

Junior Management Commit-
tee.

A "MUST" FOR TODAY'S
EFFICIENT HOUSEKEEPER—

FULLY GUARANTEED
**VACUUM
CLEANERS**

to suit every purse—every purpose!

The "MERIVAC"

Inexpensive, but you'll be thrilled with the grand performance of this popular model. Attachments included—£12/14/-.

The "BYLOCK"

A heavy duty machine with a $\frac{1}{2}$ H.P. motor.
All attachments—£22/10/-.

The FARMERS'
SPECIALTY DEPT.

DO YOU KNOW?

ALL YOUR SPORTS REQUISITES
MAY BE PURCHASED
OUT OF INCOME

WITH



ORDERS

Only Address—134 OXFORD TCE, CH'CHURCH.

PERSONALITIES



Mr. J. O. WILSHAW
Manager, Australian Team



Mr. HARRY ARMSTRONG,
Co-Manager, Australian Team



Mr. W. B. HICKS,
Secretary, N.Z. Football Assn.



Mr. T. W. DICK, Selector for
N.Z. and Deputy Chairman of
N.Z. Football Assn. Council

OBTAIN YOUR
RENTAL CAR
TRUCK
LIGHT DELIVERY
or STATION WAGON

FROM

C. L. Rhodes Motors

569 COLOMBO STREET

TELEPHONE 35-228

Light Delivery or Station Wagon
Light Delivery or Station Wagon

from 8 H.P. to 30 H.P.

1948 DE LUXE STUDEBAKER FOR SPECIAL HIRE.

WE STILL BUY AND SELL GOOD USED
CARS

C. L. RHODES, Proprietor

EXPLANATORY RULES

There will be many spectators who are new to the game and others who have forgotten the laws of the game. The off-side rule trips most and a study of the following will enable you to follow the game more easily.

OFFSIDE

When a player plays the ball, any player of the same side who at such moment of playing is nearer to his opponents' goal-line is out of play, and may not touch the ball himself, nor in any way whatever interfere with an opponent, or with the play, until the ball has been again played, unless there are at such moment of playing at least two of his opponents nearer their own goal-line. A player is not out of play when the ball is kicked off from goal, when a corner-kick or a throw-in is taken, when the ball has been last played by an opponent, or when he himself is within his own half of the field of play at the moment the ball is played by any player of the same side.

It is not a breach of the law for a player to be in an off-side position but only when in that position he interferes with an opponent or with the play. If a player who is in an off-side position advances toward an opponent, or the ball, and in so doing causes the play to be affected, he should be penalised.

LAW 9

Tripping, Kicking, Jumping at.—Neither tripping, kicking, striking, nor jumping at a player shall be allowed.

"Hands."—A player (the goalkeeper within his own penalty area excepted) shall not intentionally handle the ball.

Holding, Pushing.—A player shall not use his hands to hold or push an opponent.

Charging.—Charging is permissible, but it must not be violent or dangerous.

Charging Behind.—A player shall not be charged from behind unless he is intentionally obstructing an opponent.

Free-kick from which goal may be scored.—A goal may be scored from a corner kick, and if a free kick is awarded because of any infringement of Law 9, a goal may be scored against the offending side direct from such free kick but not from any other free kick.

The goal kick must be kicked direct from the area, and not tipped to the goal-keeper to punt the ball. It must also travel outside the penalty area or be retaken.

MARKET HOTEL

VICTORIA SQUARE

FOR

SPEIGHTS ALE

COMFORTABLE LOUNGE, where the
BEST ALES, WINES and SPIRITS
are served.

J. R. KAAAN, Licensee.

WIRE MATTRESSES KAPOC MATTRESSES
UPHOLSTERY

Wire Mattresses Re-wired, Cut Down, or Tightened, Kapoc Mattresses Re-covered, Cut Down or Re-made. Have that Double Wire Mattress, Kapoc and Bed Ends Converted to Twin Beds.

All Upholstery Repairs, Best Materials,
Same Day Service. We call and deliver.

Brownie's Home Repair Service

P.O. BOX 208

PHONE 32-473

EASTERN HOTEL

Corner Cashel Street and
Fitzgerald Avenue

T. Aspell

YOUR FAVOURITE BOTTLED ALE AND BALLIN'S
SUPERB DRAUGHT SERVED AT THE EASTERN
HOTEL.

ICED DRINKS AND LIQUEURS IN OUR MODERN
LOUNGE.

KEEP YOUR CROWD TOGETHER

When you go to a match, lodge meeting, sports or
any other meeting, why not go as a group?

**MIDLAND MOTORWAYS
SERVICES LIMITED**

31 LICHFIELD STREET - - Phone 40-110
will be glad to receive your enquiry for a special bus.

Phone 36-091 R A D I O Phone 36-091

Latest World-famous Models now to hand, Also British Empire Vacuum Cleaners. Easy terms from 5/- weekly. All Classes of Radio Repairs.

**AUSTRALIA NEW ZEALAND
AGENCIES**

399 COLOMBO ST., SYDENHAM, D. McGlinchy, Prop.

THE ONLY "MEN'S ONLY"



Shoe Store in Christchurch

Large Stocks—Half sizes,

Multiple Fittings

Checked by "X-RAY"

SUCKLINGS Shoe Store.
612 COLOMBO STREET.

CURTAIN RAISER, 1.15 p.m.

Linesmen: Messrs. I. BILLCLIFF
and P. CONSEDINE.

Referee: Mr. M. M. CASSIN.

N.Z. University

Canterbury

(Black and Red)

Goal—(1) P. Iles (A.)

F.B.—(2) K. Johnstone (V.), (3)
D. Laws (A.)

½—(4) J. Gale (A.), (5) J. C. Net-
tleton (C.), (6) R. Naider (A.)

Goal—(1) A. Laing.

F.B.—(2) M. Dean, (3) E. Harris.

—(4) A. McAnulty, (5) T. Jones,
(6) A. Souter.

Fwds.—(7) S. Spiers (V.), (8)
R. S. Matanitabua (C.), (10)
R. B. Payne (O.), (9) A. Kib-
blewhite (C.), (11) T. Ed-
munds (V.)

Fwds.—(7) J. McLennan, (8) G.
McAnulty, (9) C. R. Bailey,
(10) J. O'Rawe, (11) R. Smith.

Reserves—R. Rambishewar (A.),
J. A. Ward (M.) R. Pitting
(O.), B. Sutton Smith (V.)

Reserves—A. Laffey, H. Lloyd.

Selector—J. Cawtheray.

SPEEDY—PROMPT—DEPENDABLE

Central Carrying Co. Ltd.

21 BEDFORD ROW, Telephone 33-223.

L. V. ETWELL, Managing Director.

WE CATER FOR ALL CLASSES OF CARRYING.

OUR PRICES ARE RIGHT IN EVERY WAY.

**MAKE YOUR
"WATCH"
WORD**

30 YEARS' SERVICE.

The BRITISH JEWELLERS & WATCHMAKERS

- Finest Quality Diamond Rings. From £15/-/-.
- First Grade Ladies and Gents Watches. From £5/5/-.
- Appropriate Gifts of Quality. All Prices.

CNR. COLOMBO & GLOUCESTER STREETS CHRISTCHURCH.

LANCASTER PARK OVAL, 3 p.m.

Referee: MR. T. C. GOTTERMEYER.

Linesmen: MESSRS. T. MATHIE and C. SWEENEY.

AUSTRALIA

(Myrtle Green and Gold)

K. Hough

- | | | |
|-----------------|--------------|---------------|
| 1 J. Marston | | 2 C. Drummond |
| 3 R. Lawrie | 4 W. Wilson | 5 A. Drennan |
| 6 J. Hodge | 8 F. Parsons | 12 A. Johns |
| 7 J. Cunningham | | 9 R. Hughes |
- Reserves—A. Gravell, 11 L. Gibb, 13 G. Nunn, 10 W. Cansick,
14 A. Duncan.

NEW ZEALAND

(Black)

1 R. W. King (A)

- | | | |
|--------------------|------------------|--------------------|
| 2 P. Hall (AF) | | 3 R. Hodgson (A) |
| 4 D. McKissick (W) | 5 P. Traynor (W) | 6 V. Smith (C) |
| 7 D. Ottley (S) | 9 G. Smith (C) | 11 L. D. Smith (O) |
| 8 P. O'Malley (C) | | 10 T. Methven (AF) |
- Reserves—12 F. Naumann (O), 13 C. Anderson (C),
14 A. Wilson (AF)

C
A
R
S

MORRIS

AND

DODGE

T
R
U
C
K
S

TENCH BROS. LTD.,

141 CAMBRIDGE TERRACE, CHRISTCHURCH.

sportsmen...

watch

D.I.C.

**theatre
booking
office**

... for news of reservation plans for this season's international and interprovincial outdoor sporting events!

G. W. HAZELDINE

MOTOR TRADER

12 BROUGHAM STREET, CHRISTCHURCH, S.1.

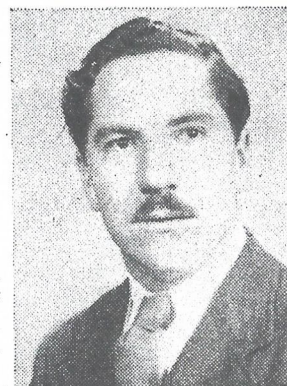
**BUYER AND SELLER OF GOOD USED CARS,
TRUCKS, CARAVANS.**

Phone 34-727.

**WHO'S WHO—
AUSTRALIAN TEAM**

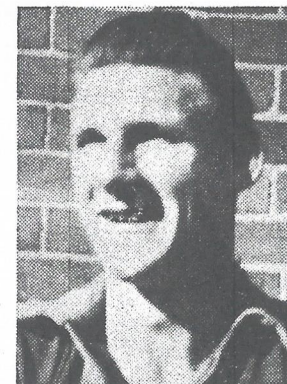


K. HOUGH: Goalkeeper, 20, fitter, 6ft. 2in., 15 st. Plays with Drumoyne-Sydney Club. First commenced first-grade football when 16 years old. Represented as schoolboy. Represented with New South Wales and inter-district. Has pair of safe hands and can clear a ball almost length of the ground.



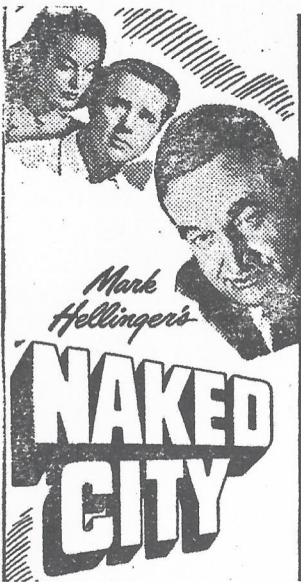
A. GRAVELL: Goalkeeper, 24, physicist, 5ft. 10in., 12st. 4lb. Plays for Box Hill, Melbourne.

Learnt to play his soccer at University High School, Melbourne. Played whilst in the Forces. Very fearless, will save a goal under heavy pressure. Should do well on the New Zealand grounds.



J. MARSTON: Fullback, 22, hair drafter, 5ft. 11in., 11st. 7lb. Plays with Leichardt-Annandale-Sydney team, leaders in the competition. Partner for C. Drummond in all Tests against South Africa, represented inter-district and inter-state. Very cool and calculating, he and Drummond are the safest pair of backs in Australia. He has a great clearance and defends well.

C. DRUMMOND: Fullback, 27, French polisher, 5ft. 7in., 12st. 2lb. Captain of the team—plays with Metters-Sydney Club. One of Australia's greatest fullbacks. Represented inter-district ten times, inter-state twice, Australia against South Africa all Tests. A very versatile player and a dour defender who is never beaten. Played with Australian XI in Adelaide and Melbourne against South Africa.



... THE SOUL OF A CITY ...
HER GLORY STRIPPED ... HER
PASSIONS BARED ... COMES
THE YEAR'S MOST EXCITING
STORY.

NAKED CITY

— Starring —

BARRY FITZGERALD
DOROTHY HART,
HOWARD DUFF

Regent

COMING
SOON!

(Recom. by Censor for Adults.)
A Universal Picture.

The NEW ZEALAND EXPRESS CO. LTD.

160 MANCHESTER ST., CHRISTCHURCH.
For all CARTAGE, FORWARDING,
FURNITURE REMOVALS,
STORAGE and CUSTOMS WORK.
PHONE 36-300

FORESTERS' HOTEL

262 Oxford Terrace

J. WATT, PROPRIETOR



A. DUNCAN: Fullback, 28,
vener classer, 5ft. 9in., 10st.
10lb. Plays with Eastern Suburbs,
Brisbane. Represented with
Queensland against South Africa
and New South Wales. An excel-
lent type of fullback, tireless
worker.



R. LAWRIE: Halfback, 28,
clerk, 5ft. 11in., 11st. 5lb. Plays
with Sturt Club, Adelaide. Play-
ed first-grade football in three
states, Queensland, New South
Wales and South Australia. Rep-
resented with Queensland and
Australia against Palestine and
China. Played with Brentford in
England whilst with the R.A.A.F.
A very sound centre-half and
wing-half and knows the game
well.

LEX GIBB: Halfback, 29, mine
electrician, 5ft. 9in., 11st. 3lb.
Plays with Corinthians, Brisbane.
Represented for Australia against
India-Palestine-China and South
Africa in all Tests. Represented
with Queensland against New
South Wales and English Ama-
teurs. Son of Alex Gibb, who
toured New Zealand as Australian
captain. An excellent centre-half
and halfback. Keeps his forwards
well supplied with the ball.

A. JOHNS: Inside left, 22, gas
employee, 5ft. 10in., 10st. 3lb.
Plays with Adamstown, Newcastle
competition leaders. One of Aus-
tralia's most foremost forwards
and a prolific goal scorer. Rep-
resented against South Africa and
with New South Wales. Against
Queensland also represented con-
tinuously in inter-district games.
Johns is one of Australia's great
hopes in International football.



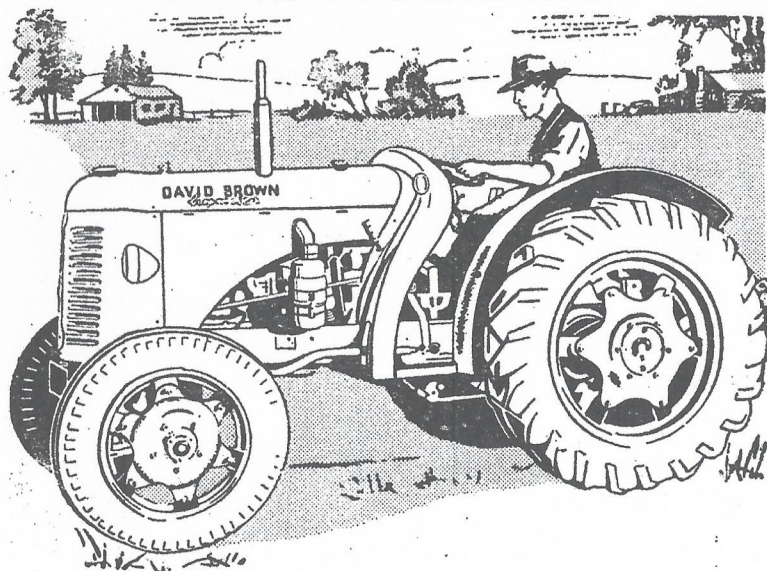
W. WILSON: Halfback, 25,
nickel finisher, 6ft., 12st. 12lb.
Plays with Canterbury - Banks-
town-Sydney. Represented New
South Wales against South Africa
and Queensland. Represented
with Australia against South
Africa in three Tests. Plays in
any position in the halfback line
and is also a good fullback. A
very reliable defender and covers
quite a lot of ground for the ben-
efit of his forwards.

FARMERS . . .

DAVID BROWN
DAVID BROWN
DAVID BROWN

TRACTORS
TRACTORS
TRACTORS

BUILT FOR NEW ZEALAND NEEDS



25/35 H.P. Motor
All Range Governor
O.H.V. Motor. Wet Sleeve
Hydraulic Lift
2 and 3 Furrow Ploughs
2 Speed Power Take Off
Road Speed 16
Turning Circle 10½ ft. Radius
16 in. Ground Clearance
Wide Track Adjustment
Off Set Rear Axle
Front and Rear Lights
100% British

Write for full specifications from—

HAINES MOTORS

“COAST TO COAST.”

“COAST TO COAST.”

cnr. Manchester and Gloucester Streets.



G. NUNN: Centre forward, 21, signwriter, 5ft. 10in., 12st. 2lb. Plays with Bunbamba-Brisbane. Represented since school days. Represented with his state against New South Wales and South Africa. A very fast runner and very dangerous when near goal. He should do well in New Zealand.

W. CANSICK: Left wing, 27, carpenter, 5ft. 7in., 10st. 6lb. Plays with Thistle Club, Brisbane. A new International recruit. Represented with Queensland against New South Wales. A very fast wing-forward with a well-timed cross and can cut in and score goals. A very sound choice.

A. DRENNAN: Halfback, 23, carpenter, 5ft. 9in., 10st. 10lb. Plays with Sunshine United, Melbourne. Has represented with Victoria against all visitors to that state. Clever halfback, well polished and should do well in New Zealand. He can distribute and defend well.

F. PARSONS: Centre forward, 22, school teacher. 6ft. 2in., 12st. 7lb. Plays with Leichardt-Annamdale Club, Sydney competition leaders. He is without doubt Australia's most capable centre-forward, is within striking distance of the State goal scoring record, a very robust player and very dangerous within scoring range. He should get a lot of goals if the opportunity presents itself.



J. HODGE: Right wing, 20, miner, 5ft. 9in., 10st. 9lb. Plays with West Wallsend-Newcastle. Represented inter-district three occasions and with New South Wales against Queensland. A newcomer to big football—has every indication of being a prospect for greater representation. Crosses well and can shoot for goal.

J. CUNNINGHAM: Inside right, 30, boiler-maker, 5ft. 6in., 11st. 10lb. Plays with Woonona-Bulli-South Coast New South Wales. Represented with New South Wales against Queensland three times, South Africa twice, played for Australia in four Tests against South Africans, played with Australian XI against South Africa in Adelaide and Melbourne. A very clever player and a great exponent of the game. He has an abundance of football ability and should be a crowd pleaser in New Zealand.

R. HUGHES: Inside forward, 26, sheet metal worker, 5ft. 11in., 12st. 2lb. Plays with Canterbury-Bankstown, Sydney. Represented for Australia against South Africa, New South Wales against Queensland, New South Wales against British Services. Comes of a great soccer family. He is one of Australia's greatest soccer forwards, plays either right or left inside wing-forward. He is a good player under any conditions.

PROVINCIAL HOTEL

Cnr. Cashel and Barbadoes Streets.

The best "SPOT" in Town.

CROWN AND SPEIGHTS ALES ON TAP.

Also a large selection of Wines, Sherries and Ales stocked in the Bottle Store.

G. L. COMER, Proprietor. Phone 34-277.

SHOP AT
STAR STORES
AND SAVE

INSIST ON ...
PERFECTION ICE CREAM
IT'S A FOOD
NOT A FAD
300 MANCHESTER ST., CHRISTCHURCH
Telephone 35-926

UNDER NEW MANAGEMENT
RECENTLY RENOVATED
STOREY'S TOURIST HOTEL
MOORHOUSE AVENUE (Right Opp. Railway Stn.)
Telephone 34-285

Speights always on Tap.
(JIM BONNER, Proprietor)
Casual Diners specially Catered for

NEW ZEALAND TEAM



P. O'Malley (Canterbury): Full-back. Age, 22 years. Height, 6ft. Weight, 12st. New Zealand born. Has had a considerable amount of rep, football for his age and shows signs of improving still further. Kicks well either foot and his head work is good. Has good turn of speed and uses his brains in cover defence.

T. METHVEN (Air Force): A recent arrival; very clever player; half-back and inside forward.

V. SMITH (Technical): Constructive half-back, made a good impression against South Africans, who had a very high opinion of him, represented New Zealand.

D. McKISSICK (W — Railways): Right Half. A recent arrival in the country. Excellent ball control, a constructive player good on attack and defence. North Island and Wellington, 1948.

P. TRAYNOR (W—Water-side): Left Half. One of the fastest players on the football field, either with the ball at toe or not. His ability to turn defence into attack marks him as a dangerous player. Has represented Wellington on a number of occasions. Wellington, 1948.



ROBERT (BOB) KING (A): Goal. Recognised in Auckland as a very brilliant goal-keeper. Praised by South Africans last year who thought him to be the best goalie they had met during the whole of their New Zealand tour, including all Tests. Has exceptionally safe pair of hands; rarely fumbles; always cool under pressure; wonderful anticipation; powerful kicker; quickly turns defence into attack with his skilful placements from the goal area; hard to bustle; would occasion no surprise in Auckland if chosen for New Zealand against the Australians in August. North Island, 1948; and Auckland, 1948.

NEW ZEALAND TEAM



G. Smith (Canterbury): Centre forward. Age, 34 years. Height, 5ft. 10½in. Weight, 11st. 9lb. Born in New Zealand. Has represented Canterbury for a number of years. Richly deserves the honour of playing for New Zealand. Has been the most outstanding forward in Canterbury for years. Shoots well either foot and is clever with his head. A brilliant constructive player. Not a bustling forward, but moves quickly on to the ball with a definite purpose in mind. Will bear watching.

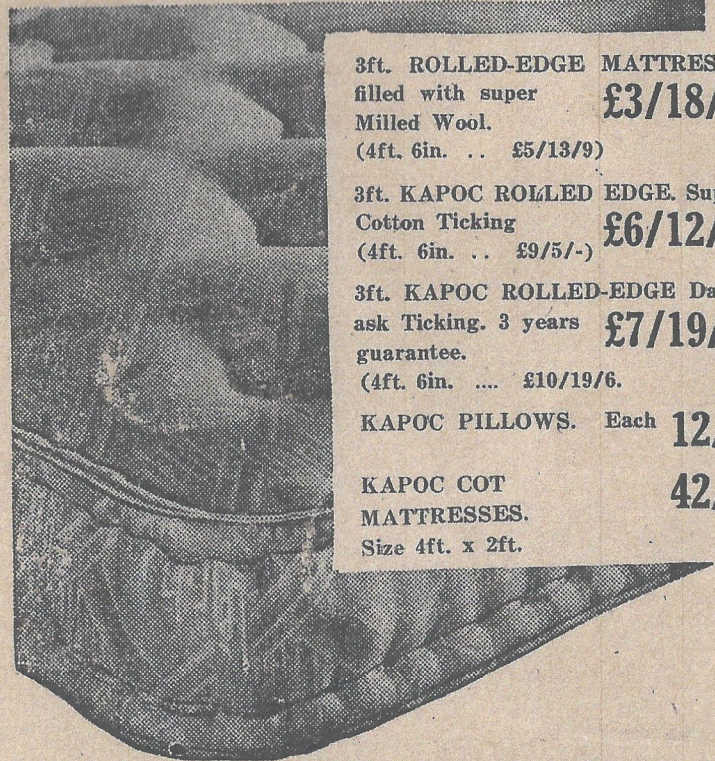


RAY HODGSON (A.): Left Back. Has been a solid back since secondary school reps., when he represented Auckland in Skerret Cup series at Wellington in 1939 and at New Plymouth in 1940. Chosen in the 1946 Auckland side which won the English Football Trophy from Canterbury at Auckland. Subsequently chosen in North Island side. North Island and Auckland, 1948.

ITINERARY OF AUSTRALIAN TEAM

August 4—v. SOUTH AUCKLAND at Hamilton, Won 6-1
 August 7—v. AUCKLAND at Auckland, Won 5-0
 August 11—v. MINOR ASSOCIATIONS at Palmerston N., Won 6-1
 August 14—v. FIRST TEST at Wellington, Won 6-0
 August 18—v. CANTERBURY at Christchurch, Won 3-1
 August 21—v. MINOR ASSOCIATIONS at Timaru, Won 11-0
 August 25—v. OTAGO at Dunedin (Wed.)
 August 28—v. SECOND TEST at Christchurch (Sat.)
 September 1—v. WELLINGTON at Wellington (Wed.)
 September 4—v. AUCKLAND at Auckland (Sat.)
 September 8—v. ROTORUA at Rotorua (Wed.)
 September 11—v. THIRD TEST at Auckland (Sat.)

SCOTT'S for Bedding



3ft. ROLLED-EDGE MATTRESSES,
 filled with super Milled Wool. **£3/18/9**

(4ft. 6in. ... £5/13/9)

3ft. KAPOC ROLLED EDGE Super Cotton Ticking **£6/12/6**

(4ft. 6in. ... £9/5/-)

3ft. KAPOC ROLLED-EDGE Damask Ticking. 3 years guarantee. **£7/19/6**

(4ft. 6in. £10/19/6.

KAPOC PILLOWS. Each **12/9**

KAPOC COT MATTRESSES. **42/3**

Size 4ft. x 2ft.

SPECIALS !

CONGOLEUM SQUARES, 12ft x 9ft **£3/12/6**

36in ECRU MARQUISSETTE. Fine quality.

Yard **4/11**

36in ECRU NET with coloured flower in Green, Blue, Rose and Lemon ...

Yard **4/11**

45in CHENILLE, in Rust, Wine and Green.

Yard **22/6**

SEAGRASS OVAL BATHMATS,

size, 48in x 24in

6/3

SEAGRASS SQUARE, size 9ft x 6ft

£4/7/-

SCOTT'S FURNISHING CO.

Limited

644 Colombo Street.