

## **Portfolio of Projects**

The portfolio of projects provides selected pictures for projects where Ms. Sumpter has provided her leadership. Both exterior and interior pictures are listed – showing her keen eye for detail and design. The last section provides a detailed listing for projects where Ms. Sumpter led the development effort.

### **Selected Exterior Pictures**

#### **Bedford Parc & Promenade**

This project was developed in Los Angeles, CA. It consists of 202 condominiums with commercial space. The development cost was \$42 million.







**Thomas Berkeley Square**

This project was developed in Oakland, CA. It consists of 95 condominiums with commercial space. The development cost was \$28 million.





**West Angeles Church of God in Christ**

This project was developed in Los Angeles, CA. This iconic church sits on the Crenshaw Corridor. The development cost was \$50 million.



**West Angeles Villas**

This project was developed in Los Angeles, CA. It consists of 150 apartment homes designed for seniors. The development cost was \$18 million.





**Abajo del Sol**

This project was developed in Monterey Park, CA. It consists of 60 apartment homes. The development cost was \$5.4 million.



**Adams West**

This project was developed in Los Angeles, CA. It consists of 52 apartment homes design for senior living with commercial space. The development cost was \$5.4 million.



**Athens Terrace**

This project was developed in Los Angeles, CA. It consists of 35 apartment homes. The development cost was \$4.7 million.



**Avalon Place**

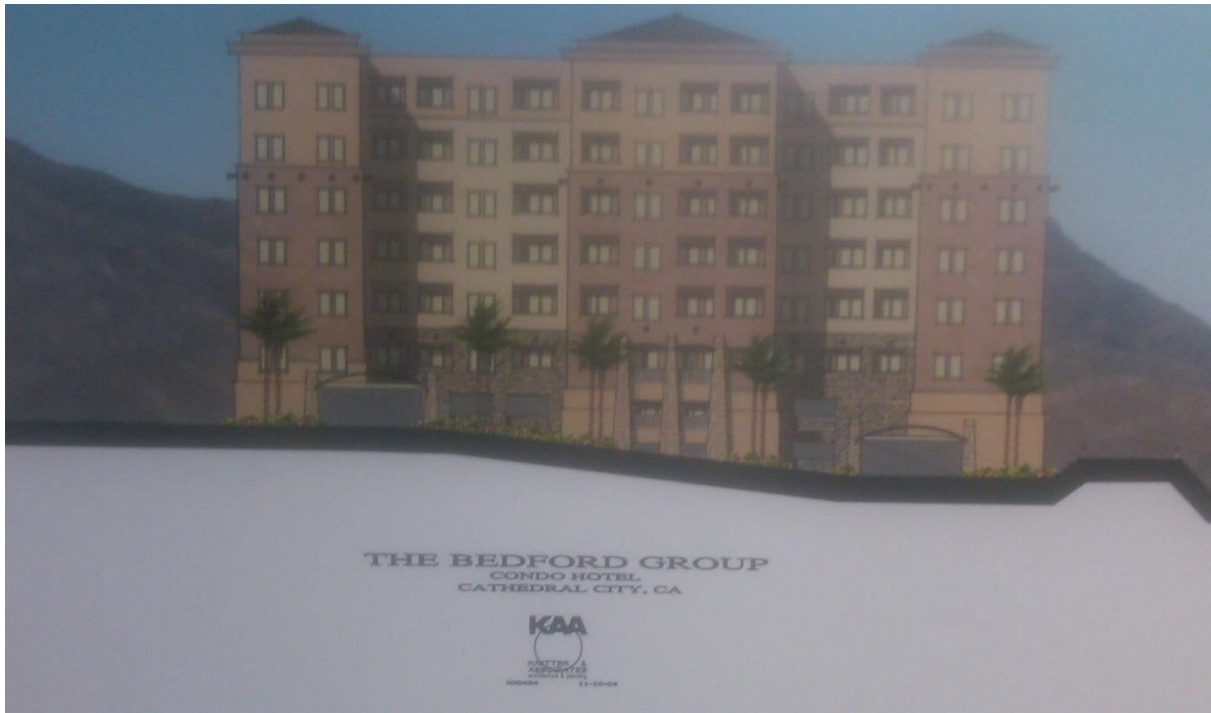
This project was developed in Los Angeles, CA. It consists of 75 apartment homes designed for seniors. The development cost was \$8.0 million.





### **Cathedral City Condo Hotel**

This project was to be developed in Cathedral City, CA as a combination hotel/condominium. Although the development phase was completed, the project was not constructed. The development cost was \$27 million.



### **Eleventh Avenue Apartments**

This project was developed in Los Angeles, CA. It consists of 22 apartment homes. The development cost was \$2.8 million.





### **Harvard Yard**

This project was developed in Los Angeles, CA. It consists of 207 apartment homes designed for seniors. The development cost was \$20 million.



### **Hyde Park Place**

This project was developed in Los Angeles, CA. It consists of 29 apartment homes. The development cost was \$3.2 million.



### **Mariposa Apartments**

This project was developed in Los Angeles, CA. It consists of 26 apartment homes. This rehabilitation project development cost was \$2.4 million.



### **Playa Del Sol Townhomes**

This project was developed in Los Angeles, CA. It consists of 28 townhomes. The development cost was \$3.4 million.





**Terra Nova Townhomes**

This project was developed in Los Angeles, CA. It consists of 30 townhomes. The development cost was \$4.5 million



## Selected Interior Pictures

### Bedford Arbors



### West Angeles Villas





## Listing of Projects

The following table provides a complete listing of the 32 projects whereby Ms. Sumpter was the developer and led the development team.

Project Name	Location	Property Type	Construction Type	No. Units	Completed	Dev. Cost (in millions)
Abajo Del Sol	Monterey Park, CA	Senior	New	60	2001	5.4
Adams West	Los Angeles, CA	Senior w/ Commercial	New	52	1996	5.4
Athens Terrace	Los Angeles, CA	Multi-Family	New	35	2005	4.7
Avalon Place	Los Angeles, CA	Senior	New	75	2003	8.0
Baldwin Village/Watson Terrace II	Los Angeles, CA	Multi-Family	Rehab. & New	83	2001	12.2
Bedford Parc & Promenade	Los Angeles, CA	Multi-Family	New	202	2009	42.0
Brynview Terrace Apts.	Los Angeles, CA	Multi-Family	New	8	1992	850K
Carondelet	Los Angeles, CA	Multi-Family	New	47	1995	4.6
Cathedral City Condo & Hotel	Cathedral City, CA	Multi-Family + Hotel	New	95	NC	27.0
Coronado	Los Angeles, CA	Multi-Family	New	64	1995	5.2
Corridor Projects	Los Angeles, CA	Multi-Family	Rehab	44	1998	4.5
Curry Temple Senior Apts.	Los Angeles, CA	Senior	New	48	1997	2.5
Eleventh Ave. Apts.	Los Angeles, CA	Multi-Family	New	22	1994	2.8
Glenmary Apts.	Los Angeles, CA	Special Needs	New	9	2002	1.0
Harvard Yard	Los Angeles, CA	Senior	New	207	2005	20.0
Highland Hall Theatre	Northridge, CA	Black Box Theatre	New	N/A	NC	2.6
Hyde Park Place	Los Angeles, CA	Multi-Family	New	29	1996	3.2
Mariposa Apts.	Los Angeles, CA	Multi-Family	Rehab	26	2003	2.4
Nicolet Avenue/Avalon Terrace Apartments	Los Angeles, CA	Multi-Family	Rehab. & New	38	2002	4.0
Plaza Vermont	Los Angeles, CA	Mixed Use	New	79	1994	11.0
Playa Del Sol Townhomes	Los Angeles, CA	Multi-Family?	New	28	2001	3.4
Rockview Apts.	Los Angeles, CA	Multi-Family	New	42	2005	3.2
Rugby Plaza	Los Angeles, CA	Senior w/ Health Care	New	184	1997	18.0
Terra Nova Townhomes	Los Angeles, CA	Multi-Family	New	30	2002	4.5

### ***Portfolio of Projects – Sharon Sumpter***

---

<b>Project Name</b>	<b>Location</b>	<b>Property Type</b>	<b>Construction Type</b>	<b>No. Units</b>	<b>Completed</b>	<b>Dev. Cost (in millions)</b>
Thomas Berkeley Square	Oakland, CA	Multi-Family w/commercial	New	95	2009	28.0
Villa Del Coliseo	Los Angeles, CA	Multi-Family	New	137	1991	12.0
Waldolf Manor	Los Angeles, CA	Senior	Rehab	51	1998	1.7
Watson Terrace I	Los Angeles, CA	Multi-Family	New	12	1991	1.4
Wattstar Theatre	Los Angeles, CA	Black Box Theatre	New	N/A	NC	23.0
West Angeles Church...	Los Angeles, CA	Church	New	N/A	2004	50.0
West Angeles Villas	Los Angeles, CA	Senior	New	150	2003	18.0
West Park	Los Angeles, CA	Multi-Family	New	75	1993	8.9

**N/A = Not Applicable**

**NC = Not Completed**