



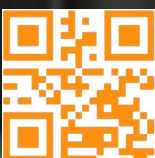
Up to 640x480 @35mK NETD

A highly sensitive VOx detector with 640 x 480 (307,200 pixels) IR resolution, provides a distinct thermal vision of the target.

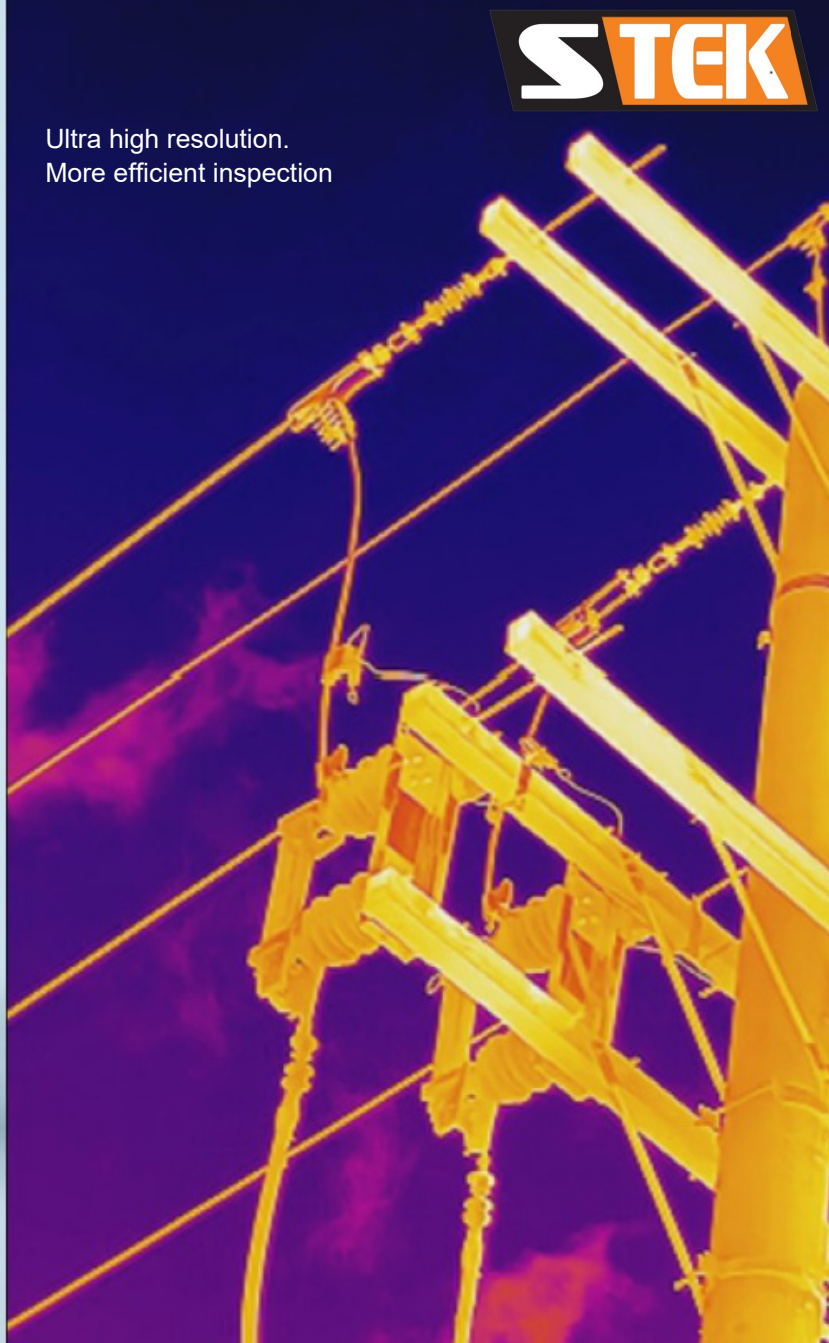
Up to 2000°C Temperature Range

With a measurement range of up to 2000°C (3992°F), it can handle industrial furnace applications, refractory, and inspecting tools/fixtures in metal smelting at these extreme temperatures. (*Ti400H+/Ti600H+ only)

QR Code Capture & Routing Software



Ultra high resolution.
More efficient inspection



Embedded Laser Distance Meter

An integrated laser distance meter provides accurate distance and area measurement from long distances, more convenient in setting parameters and generating the report.



Parameters / Models	Ti300 +	Ti400 +	Ti400H+	Ti600+	Ti600H+
Infrared Image Specifications					
IR Resolution	384 x 288 (110,592 pixels)	480 x 360 (172,800 pixels)	480 x 360 (172,800 pixels)	640 x 480 (307,200 pixels)	640 x 480 (307,200 pixels)
NETD	< 35 mK (@ 25 °C, F#=1.0)				
Image Frequency	50 Hz				
Detector Pitch	17 µm				
Spectral Range	7.5 to 14 µm				
Focal Length	15 mm	25 mm			
F-number	F 1.0				
Field of View (FOV)	25° × 19°	18.7° × 14°		25° × 19°	
Spatial Resolution (IFOV)	1.13 mrad	0.68 mrad			
Focus Mode	Laser Assisted AF/Continuous AF/AF/Manual Focus/Touch AF				
Focus Speed	Approx. 2 second				
SuperIR	768 x 576 (442,368 pixels)	960 x 720 (691,200 pixels)		1280 x 960 (1,228,800 pixels)	
Min. Focus Distance	0.1 m (0.33 ft)	0.25 m (0.82 ft)	0.25 m (0.82 ft)	0.25 m (0.82 ft)	0.25 m (0.82 ft)
Image Display					
Visual Camera	3264 × 2448 (8 MP)				
Display	800 × 480 Resolution, 4.3" LCD Touch Screen				
Screen Brightness	Manual/Auto				
Digital Zoom	1.x to 8.x continuous				
Image Modes	Infrared/Visual/Fusion/PIP/Blending				
Color Palettes	White Hot, Black Hot, Rainbow, Ironbow, Red Hot, Fusion, Rain, Blue Red				
Focus Mode Palette	Above/Below/Interval				
Color Alarm	Above/Below/Interval/Insulation/Condensation				
Measurement Range /Accuracy/Analysis					
Object Temperature Range	-20 °C to 650 °C	-20 °C to 650 °C	-20 °C to 2000 °C	-20 °C to 650 °C	-20 °C to 2000 °C
Accuracy	<ul style="list-style-type: none"> -20 to 150°C and - 20 to °C :±2°C 0 to 100°C : ±1°C 100 to 150°C: ±1% 100 to 650°C :±2% 	<ul style="list-style-type: none"> -20 to 150°C and - 20 to °C :±2°C 0 to 100°C : ±1°C 100 to 150°C: ±1% 100 to 650°C : ±2% 	<ul style="list-style-type: none"> -20 to 150°C and - 20 to °C :±2°C 0 to 100°C : ±1°C 100 to 150°C: ±1% 100 to 650°C: ±2% 300 to 2000°C : ±3% 	<ul style="list-style-type: none"> -20 to 150°C and - 20 to °C :±2°C 0 to 100°C : ±1°C 100 to 150°C: ±1% 100 to 650°C : ±2% 	<ul style="list-style-type: none"> -20 to 150°C and - 20 to °C :±2°C 0 to 100°C : ±1°C 100 to 150°C: ±1% 100 to 650°C :±2% 300 to 2000°C : ±3%
Measurement Tools	Canter Spot, Hot Spot, Cold Spot User-definable: Delta T, 10 spots, 1 line, 5 rectangles, and 5 circle				
Level and Span Mode	Auto/Manual/1-Tap Touch-screen				
Inspection Route	Yes				
Data Storage and Communication					
Storage Media	Removable 64 GB Micro SD Card				
Image Storage Capacity	Approx. 60,000 Images				
Annotations	Voice note: max. 60 seconds; Text note: max. 200 characters				
Video Storage Capacity	Approx. 54 hours				
Video File Format	MP4 video and radiometric video				
Image Format	Radiometric JPEG+D36:H64				
Radiometric Infrared-Video Streaming (Compressed)	Over UVC, Wi-Fi				
Communication & Features					
Wi-Fi	802.11 b/g/n (2.4 GHz and 5 GHz)				
Bluetooth	Bluetooth 4.2				
USB Interface	USB Type-C				
HDMI Interface	Yes				
Laser Distance Meter	Indoor distance: 50 m (164 ft); Outdoor distance: 10 m (33 ft).				
GPS & Compass	yes				

Engineering / Power Specifications	
Battery Type	Interchangeable and rechargeable Li-ion battery
Battery Operating Time	Approx. 4 hours
Battery Charging Time	Approx. 4 hours fully charged
Power Saving Mode	Yes
Protection Level	IP54, IEC 60529
Drop Test Height	2 m (6.56 ft), IEC 60068-2-31
Safety	IEC 61010-1
EMC	EN 301 489-1, EN 301 489-17, EN IEC 61000-6-2, EN IEC 61000-6-3, EN IEC 61326-1, EN IEC 61326-2-2
Vibration	2 g, IEC 60068-2-6
Shock	25 g, IEC 60068-2-27
Working Temperature Range	-20°C to 50°C (-4°F to 122°F)
Storage Temperature Range	-20°C to 60°C (-4°F to 140°F)
Relative Humidity	< 95% non-condensing
Weight	Approx. 1058 g (2.33 lb)
Dimension	284.7 × 120.6 × 124.5 mm (11.21 × 4.75 × 4.9 in)
Tripod Mounting	UNC ¼"-20
Laser Pointer	Yes
Warranty	3 years for the full product, 10 years for the detector, and 2 years for the battery.
LED Light	Yes
Laser	Yes, Class II, Wavelength: 635 nm; Power: < 1 mW



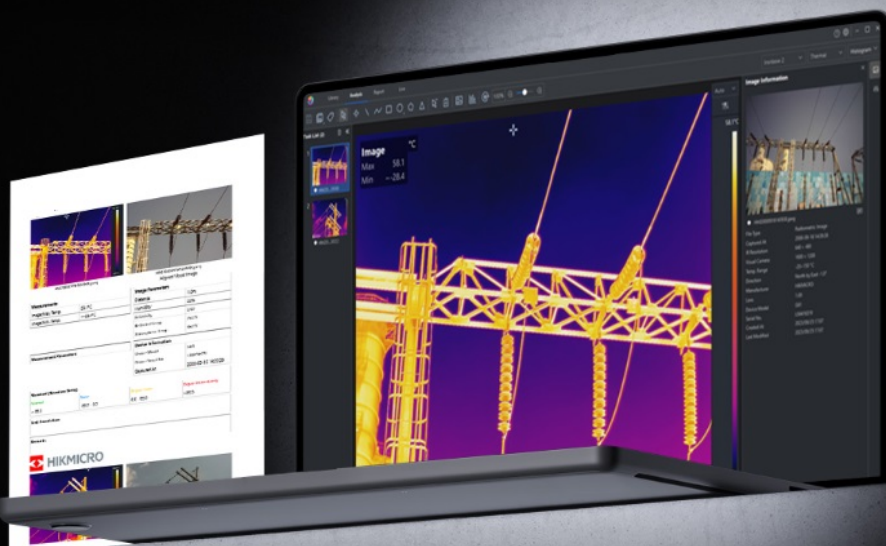
1. Handheld Thermography Camera
2. 64GB Micro SD card
3. Rechargeable Battery (x3)
4. Charging Base
5. Power Adapter
6. International Use Plugs (US/EU/UK/ AU) for Power Supply (x4)
7. USB 2.0 A to USB Type-C Cable
8. Mini HDMI to HDMI Cable
9. Lens Cover
10. Hand Strap
11. Accessory Bag
12. User Manual
13. Calibration Certificate
14. Quick Start Guide
15. Packing List
16. Carrying Case
17. Aperture (G41H/G61H Only)

www.stek.in



Radiometric Video Analysis

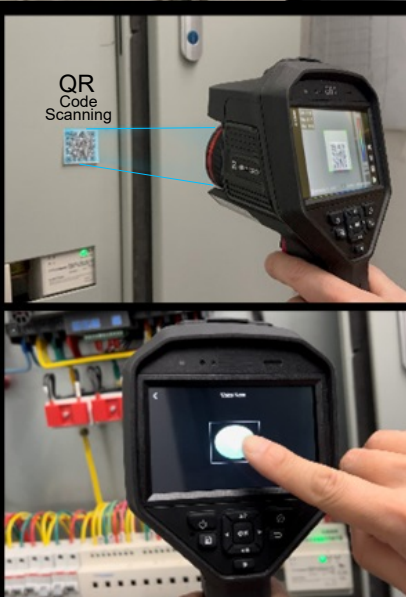
Supports recording of radiometric video in-camera SD card storage, including all temperature data, for post analysis on PC software. Works seamlessly with STEK Analyzer software for intuitive viewing, advanced analysis, and processing of thermal data.



Interchangeable Battery System Includes 3 interchangeable Li-ion batteries and a dual bay charge to provide you with up to 12 hours of operation. You can stay powered up for even the longest inspections.



Text Annotation



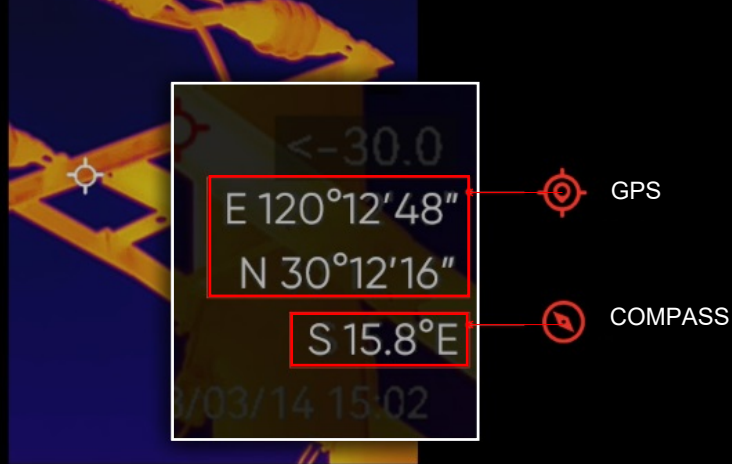
Voice Annotation



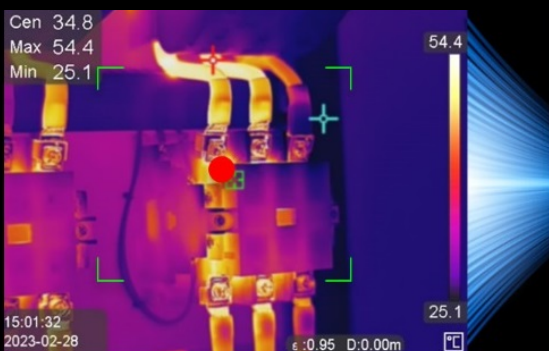
QR Code Scanning (Route)



Complete Image Annotations In addition to supporting voice, text and QR Code Scan annotations, GPS and compass functions automatically add location and direction information to the image, helping to improve inspection efficiency and productivity.



GPS / COMPASS



Continuous Auto Focus

Auto Focus

Laser Assisted Focus

Manual Focus

Touch Focus

5 Quick Focus Modes Support for 5 focus modes (Laser Assisted AF, Continuous AF, AF, Manual Focus, Touch AF) and a fast focus speed of 2 seconds help save time by providing sharper images for more accurate temperature measurements.



3 Add-on Lens 0.5X, 2X, and 3.3X are available for choice.

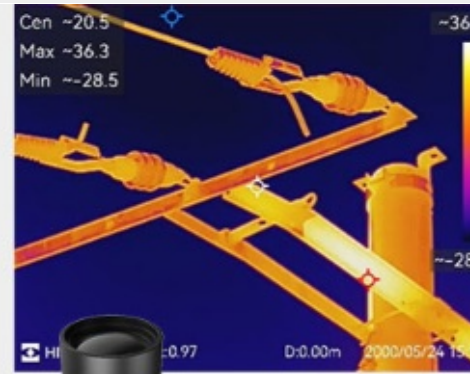
Ti300+ Lenses



Wide Angle 0.5X
LWAT-300

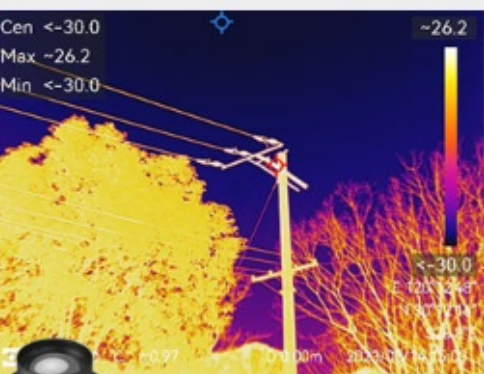


Telephoto 2X
LTPT-2-300



Telephoto 2X
LTPT-3-300

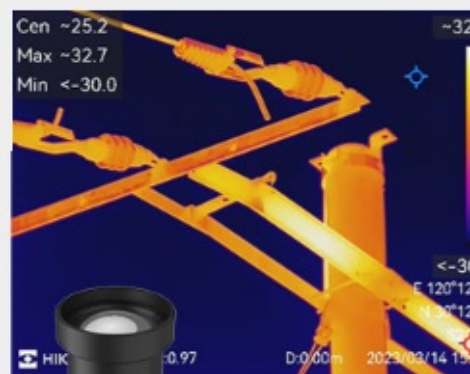
Ti400+ AND Ti600+ Lenses



Wide Angle 0.5X
LWAT-400/600



Telephoto 2X
LTPT-2-400/600

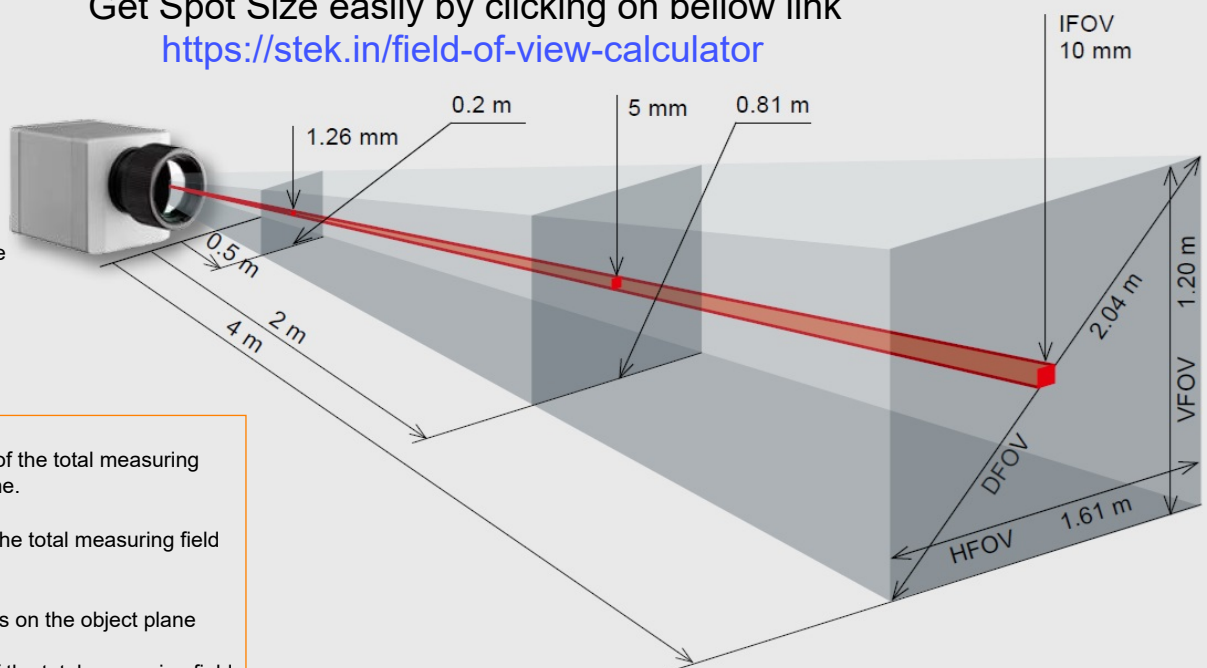


Telephoto 2X
LTPT-3-400/600

Get Spot Size easily by clicking on bellow link

<https://stek.in/field-of-view-calculator>

Precise measuring at various distances
A choice of lenses makes it possible for you to precisely measure objects at various distances, from close and standard distances right up to large distances.
With infrared cameras there are various parameters which display the relationship between the distance from the measuring object and the size of the pixel on the object plane.
In choosing the correct lens, the following should be taken into account:



- HFOV
Horizontal expansion of the total measuring field on the object plane.
- VFOV
Vertical expansion of the total measuring field on the object plane
- IFOV
Size of individual pixels on the object plane
- DFOV
Diagonal expansion of the total measuring field on the object plane
- MFOV
Recommended, smallest