

Thermal Camera STEK Professional PS Series



Flexible Rotating Lens and Screen
The 90° rotating screen and the 180° rotating lens design help to easily view the area around, between, above, or below the target. Keeping a safe distance allows for equally flexible inspections.

180°



90°

Up to 2200°C Temperature Range

With a measurement range of up to 2200°C (3992°F), it can handle industrial furnace applications, refractory, and inspecting tools/fixtures in metal smelting at these extreme temperatures. (*PS2700H / PS3600H)

Rugged, Durable, Designed for Outdoors

The entire STEK PS Series is built to withstand water and dust intrusion to IP54 standards and is drop tested to 1 meter. Its 5" 1280x720 touchscreen dynamically adapts to surrounding light conditions and displays vivid and clear details even in direct sunlight.



IP54

1meter
Drop Test

OLED Viewfinder

The SP60/60H includes a 1024x768 OLED viewfinder to target items at longer distances and eliminate sun glare



Embedded Laser Distance Meter

An integrated laser distance meter provides accurate distance and area measurement from long distances, more convenient in setting parameters and generating the report.



Interchangeable Battery System

Includes 2 interchangeable Li-ion batteries and a dual bay charger to provide you with up to 8 hours of operation. You can stay powered up for even the longest inspections.



SuperIR image enhancement technology, STEK PS Series images are upscaled 4X to deliver highly detailed live and recorded radiometric images for inspection and reporting.



Visit Our Website

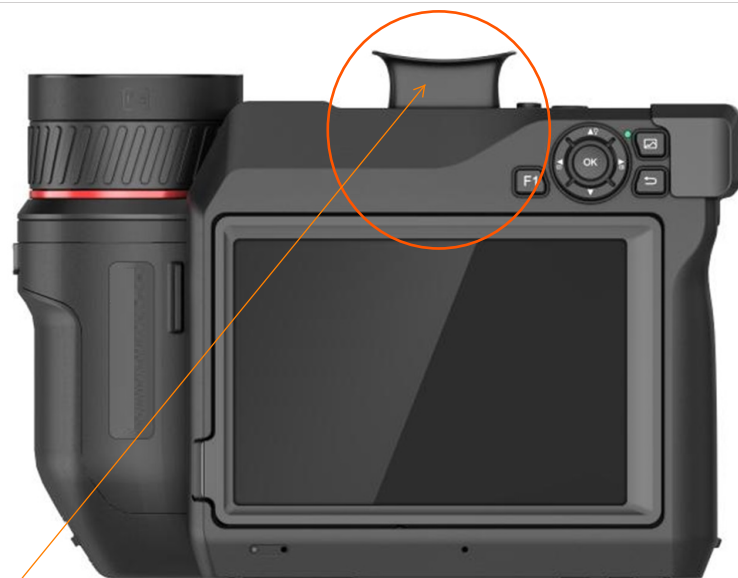
Specifications



Models	STEK PS 2700	STEK PS 2700H	STEK PS 3600	STEK PS 3600H
Infrared Image				
IR Resolution	480 × 360 (172,800 pixels)		640 × 480 (307,200 pixels)	
NETD	< 30 mK (@ 25 °C, F#=1.0)			
Image Frequency	30 Hz			
Detector Pitch	17 μm			
Spectral Range	7.5 to 14 μm			
Focal Length	L6: 77.4 mm; L9: 51.4 mm; L19: 25 mm; L37: 12.6 mm		L8: 77.4 mm; L12: 51.4 mm; L25: 25 mm; L50: 12.6 mm	
F-number	L6: F1.2; L9: F1.1; L19: F1.0; L37: F1.0		L8: F1.2; L12: F1.1; L25: F1.0; L50: F1.0	
Field of View (FOV)	L6: 6° × 4.5°; L9: 9° × 6.8°; L19: 18.7° × 14°; L37: 37.3° × 27.8°		L8: 8° × 6°; L12: 12° × 9°; L25: 24.8° × 18.7°; L50: 50° × 37.3°	
Spatial Resolution (IFOV)	L6: 0.22 mrad; L9: 0.33 mrad; L19: 0.66 mrad; L37: 1.35 mrad		L8: 0.22 mrad; L12: 0.33 mrad; L25: 0.66 mrad; L50: 1.35 mrad	
Focus Mode	Laser Assisted AF/Continuous AF/AF/Manual Focus/Touch AF		Laser Assisted AF/Continuous AF/AF/Manual Focus/Touch AF	
Focus Speed	Approx. 1 second		Approx. 1 second	
SuperIR	960 x 720 (691,200 pixels)		1280 x 960 (1,228,800 pixels)	
Min. Focus Distance	L6: 2 m (6.56 ft); L9: 1 m (3.3 ft); L19: 0.15 m (0.49 ft) L37: 0.15 m (0.49 ft)		L8: 2 m (6.56 ft); L12: 1 m (3.3 ft); L25: 0.15 m (0.49 ft); L50: 0.15 m (0.49 ft)	
Image Display	3264 × 2448 (8 MP)		3264 × 2448 (8 MP)	
Visual Camera	1280 × 720 Resolution, 5" LCD Touch Screen		1280 × 720 Resolution, 5" LCD Touch Screen	
Display	Manual/Auto			
Screen Brightness	Laser Assisted AF/Continuous AF/AF/Manual Focus/Touch AF			
Viewfinder	NA		1024 × 768 pixels OLED	
Digital Zoom	1.x to 12.x continuous			
Image Modes	Thermal/Visual/Fusion/PIP/Blending			
Color Palettes	White Hot, Black Hot, Rainbow, Ironbow, Red Hot, Fusion, Rain, Blue Red			
Focus Mode Palette	Above/Below/Interval			
Color Alarm	Above/Below/Interval/Insulation			
Measurement and Analysis				
Object Temperature Range	-20°C to 650°C (-4°F to 1202°F)	-40°C to 2200°C (-40°F to 3992°F)	-20°C to 650°C (-4°F to 1202°F)	-40°C to 2200°C (-40°F to 3992°F)
Accuracy	Max. (± 2°C/3.6°F, ± 2%)	±1°C (±1.8°F): 0 to 100°C (32 to 212°F); ±1%: 100 to 150°C (212 to 302°F); ±2°C (±3.6°F): -40 to 0°C (-40 to 32°F); ±2%: 150 to 2200°C (302 to 3992°F)	Max. (± 2°C/3.6°F, ± 2%)	±1°C (±1.8°F): 0 to 100°C (32 to 212°F); ±1%: 100 to 150°C (212 to 302°F); ±2°C (±3.6°F): -40 to 0°C (-40 to 32°F); ±2%: 150 to 2200°C (302 to 3992°F)
Measurement Tools	Center Spot, Hot Spot, Cold Spot			
Level and Span Mode	User-definable: Delta T, 10 spots, 1 line, 5 rectangles, and 5 circles			
Inspection Route	Auto/Manual/1-Tap Touch-Screen			
Data Storage and Communication				
Storage Media	Removable 128 GB SD Card			
Image Storage Capacity	Approx. 120,000 Images			
Annotations	Voice note: max. 60 seconds; Text note: max. 200 characters			
Video Storage Capacity	Approx. 500 hours			
Video File Format	MP4 video			
Image Format	Radiometric JPEG			
Radiometric Infrared-Video Streaming (Compressed)	Over UVC, Wi-Fi			
Communication				
Wi-Fi	802.11 b/g/n (2.4 GHz and 5 GHz)			
Bluetooth	Bluetooth 4.2			
USB Interface	USB Type-C			
HDMI Interface	HDMI-D			
Laser Distance Meter	Indoor distance: 50 m (164 ft); Outdoor distance: 10 m (33 ft).			
GPS & Compass	Yes			

Engineering & Power

Battery Type	Interchangeable and rechargeable Li-ion battery
Battery Operating Time	Approx. 4 hours
Battery Charging Time	Approx. 2.5 hours fully charged
Power Saving Mode	Yes
Programmable Buttons	2
Protection Level	IP54, IEC 60529
Drop Test Height	1 m (3.28 ft), IEC 60068-2-31
Safety	IEC 61010-1
EMC	EN 301 489-1, EN 301 489-17, EN IEC 61000-6-2, EN IEC 61000-6-4, EN 61326-1
Vibration	2 g, IEC 60068-2-6
Shock	25 g, IEC 60068-2-27
Working Temperature Range	-20°C to 50°C (-4°F to 122 °F)
Storage Temperature Range	-20°C to 60°C (-4°F to 140°F)
Relative Humidity	< 95% non-condensing
Weight	Approx. 1451 g (3.2 lb)
Dimension	210.1 × 141.03 × 87.8 mm (8.27 × 5.55 × 3.45 in)
Tripod Mounting	UNC ¼"-20
Laser Pointer	Yes
Warranty	3 years for the full product, 10 years for the detector, and 2 years for the battery.
Laser	Yes, Class II, Wavelength: 635 nm; Power: < 1 mW
LED Light	Yes



View Finder (OLED)

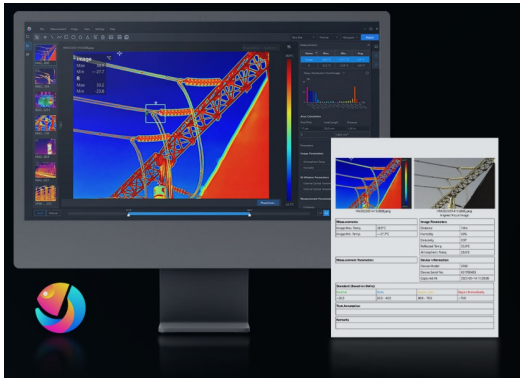
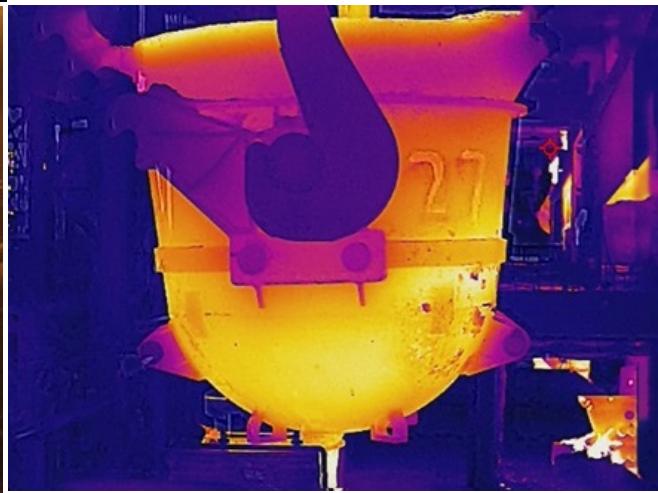
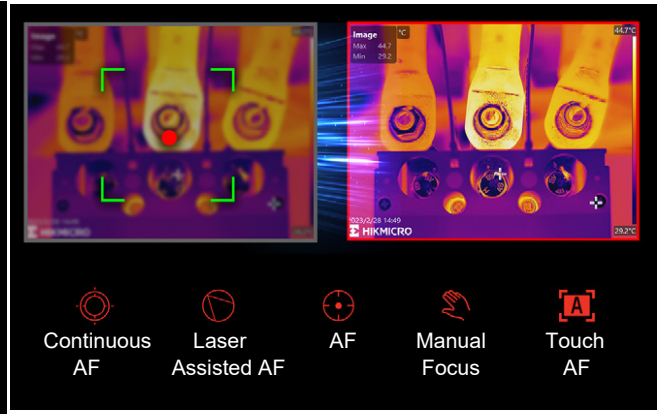
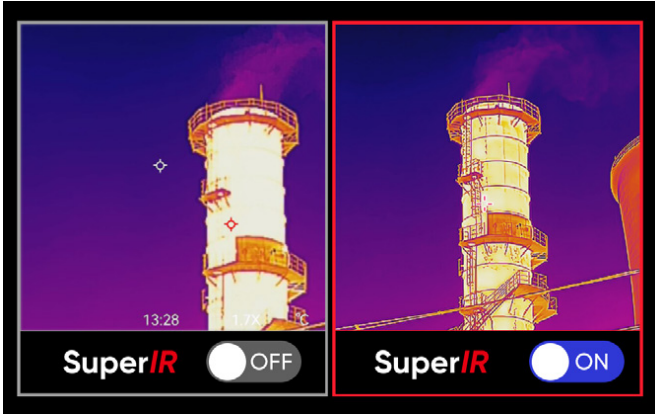


- Thermal Imager
- Hand Strap
- Neck Strap
- Rubber Viewfinder Cap (SP60/60H Only)
- Camera Lens Caps
- Dismountable and Rechargeable Li-ion Batteries (x2)
- Power Supply for Battery Charger
- Two-bay Battery Charger
- International Use Plugs (US/EU/UK/AU) for Power Supply
- USB 2.0 A to USB Type-C Cable
- Mini HDMI to HDMI Cable
- USB Type-C Cable to USB Type-C Cable
- Hard Carrying Case
- Calibration Certificate
- Quick Start Guide
- 64GB Micro SD card

<https://stek.in/field-of-view-calculator>



MODEL NUMBER	DETECTORS	SUPER REOLUTION	TEMPERATURE RANGE	DETECTORS AND LENSES INCLUDED
PS2700-L6	480 x 360	960 X 720	-20°C to 650°C	PIXELS: 480×360, LENS: 6°×4.5°,
PS2700-L9	480 x 360	960 X 720	-20°C to 650°C	PIXELS: 480×360, LENS: 9°×6.8°,
PS2700-L19	480 x 360	960 X 720	-20°C to 650°C	PIXELS: 480×360, LENS: 18.7°×14°,
PS2700-L37	480 x 360	960 X 720	-20°C to 650°C	PIXELS :480×360, LENS: 37.3°×27.8°,
PS2700-L6/19	480 x 360	960 X 720	-20°C to 650°C	PIXELS: 480×360, LENS: 6°×4.5° & 18.7°×14°,
PS2700-L9/19	480 x 360	960 X 720	-20°C to 650°C	PIXELS: 480×360, LENS: 9°×6.8° & 18.7°×14°,
PS2700-L9/37	480 x 360	960 X 720	-20°C to 650°C	PIXELS: 480×360, LENS: 9°×6.8° & 37.3°×27.8°,
PS2700-L19/37	480 x 360	960 X 720	-20°C to 650°C	PIXELS: 480×360, LENS: 18.7°×14° & 37.3°×27.8°,
PS2700-L6	480 x 360	960 X 720	-20°C to 650°C	PIXELS: 480×360, LENS: 6°×4.5°,
PS2700-L9	480 x 360	960 X 720	-20°C to 650°C	PIXELS : 480×360, LENS: 9°×6.8°,
PS2700H-L19	480 x 360	960 X 720	-20°C to 2200°C	PIXELS: 480×360, LENS: 18.7°×14°,
PS2700H-L37	480 x 360	960 X 720	-20°C to 2200°C	PIXELS: 480×360, LENS: 37.3°×27.8°,
PS2700-L8	640 x 480	1280 X 960	-20°C to 650°C	PIXELS: 640×480, LENS: 8°×6°
PS3600-L12	640 x 480	1280 X 960	-20°C to 650°C	PIXESL: 640×480, LENS: 12°×9°,
PS3600-L25	640 x 480	1280 X 960	-20°C to 650°C	PIXELS: 640×480, LENS: 24.8°×18.7°,
PS3600-L50	640 x 480	1280 X 960	-20°C to 650°C	PIXELS: 640×480, LENS: 50°×37.3°,
PS3600-L8/25	640 x 480	1280 X 960	-20°C to 650°C	PIXELS :640×480,LENS: 24.8°×18.7° & 8°×6°,
PS3600-L12/50	640 x 480	1280 X 960	-20°C to 650°C	PIXELS: 640×480, LENS: 12°×9° & 50°×37.3°,
PS3600H-L25	640 x 480	1280 X 960	-20°C to 2200°C	PIXELS: 640×480, LENS: 24.8°×18.7°,
PS3600H-L50	640 x 480	1280 X 960	-20°C to 2200°C	PIXELS: 640×480, LENS: 50°×37.3°



Powerful and free licensed PC software designed to help users manage and analyze thousands of thermal images and videos and quickly create professional reports. Compatible with files from STEK handheld thermal cameras, providing the features you need to simplify your workflow and increase your productivity.

Conveniently Share Images and Reports

Connect STEK Viewer App via Wi-Fi to transfer photos or videos from camera to mobile device. Analyze, share images, and generate reports in real-time on-site !!!

