

### DESCRIPTION

The luminaire is a high performance LED lighting solution designed with optical versatility and a slim, low profile design. Its rugged cast aluminum housing minimizes wind load requirements and features an integral, watertight LED driver compartment and high performance aluminum heat sinks. Markets include parking lots, walkways, campuses, car dealerships, office complexes, and internal roadways.



### SPECIFICATION FEATURES

#### Construction

- Housing, electrical compartment and fitter are all made from die case aluminum that is pre-treated and powder-coated to meet the most rugged industry standards.
- Door frame features an integral accessory channel for the mounting of optional light control accessories.
- Vented housing isolates LED module from driver, maximizing product life and performance
- Doorframe seals to housing with a continuous extruded silicone gasket.

#### Optics

- Optics(NEMA Type): 7H\*6V.
- Scalable Lumen Packages from 1,950 to 26,000 Lumens.
- Provides the best combination of vertical and horizontal illumination while reducing light behind the poles.
- High performance acrylic optic securely attached to internal heat sink for maximum thermal dissipation.

#### Electrical

- Universal 120-277 VAC or 347-480 VAC input voltage.
- Both drivers have a power factor >90%, THD <20%, and an expected life of 100,000 hours.

#### Lifespan

- Estimated 100,000-hour LED lifespan based on IES LM-80 results and TM-21 calculations

#### Warranty

- Five-year warranty.

### PHOTOMETRICS

7HX6V

### ACCESSORIES

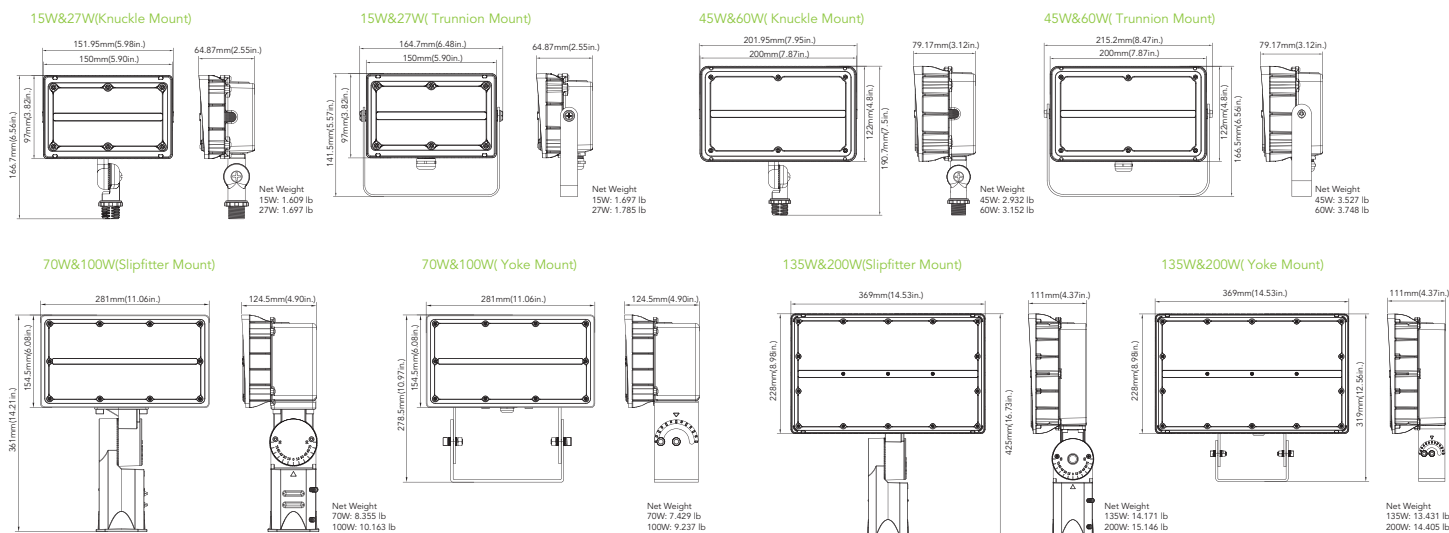
Photocell

No. PC-JL-120-277V

USE: Photocell is field installed or pre-installed in factory by requesting

### DIMENSIONS

unit: mm/inch



### PERFORMANCE DATA

SYSTEM WATTS	VOLTAGE	DIST. TYPE	CRI	LUMENS (3000K)	LPW (3000K)	LUMENS (4000K)	LPW (4000K)	LUMENS (5000K)	LPW (5000K)
15W	120-277V	7Hx6V	70	1950lm	130 lm/W	2000lm	133 lm/W	2000lm	133 lm/W
27W	120-277V	7Hx6V	70	3500lm	130 lm/W	3600lm	133 lm/W	3600lm	133 lm/W
45W	120-277V	7Hx6V	70	5550lm	123 lm/W	5650lm	126 lm/W	5650lm	126 lm/W
60W	120-277V	7Hx6V	70	7250lm	121 lm/W	7450lm	124 lm/W	7450lm	124 lm/W
60W	347-480V	7Hx6V	70	7500lm	125 lm/W	7600lm	127 lm/W	7600lm	127 lm/W
70W	120-277V	7Hx6V	70	8700lm	124 lm/W	8900lm	127 lm/W	8900lm	127 lm/W
70W	347-480V	7Hx6V	70	9100lm	130 lm/W	9300lm	133 lm/W	9300lm	133 lm/W
90W	347-480V	7Hx6V	70	12000lm	133 lm/W	12400lm	138 lm/W	12400lm	138 lm/W
100W	120-277V	7Hx6V	70	13100lm	131 lm/W	13300lm	133 lm/W	13300lm	133 lm/W
135W	120-277V/347-480V	7Hx6V	70	17100lm	127 lm/W	17500lm	130 lm/W	17800lm	132 lm/W
200W	120-277V/347-480V	7Hx6V	70	24600lm	123 lm/W	25600lm	128 lm/W	26000lm	130 lm/W

# ELECTRICAL DATA

Number Of Drivers	Driver Current (mA)	Nominal Power (W)	INPUT VOLTAGE (V)	CURRENT (Amps)
1	250	15	120	0.13
		15	208	0.07
		15	240	0.06
		15	277	0.05
1	430	27	120	0.23
		27	208	0.13
		27	240	0.11
		27	277	0.10
1	770	45	120	0.38
		45	208	0.22
		45	240	0.19
		45	277	0.16
1	920	60	120	0.50
		60	208	0.29
		60	240	0.25
		60	277	0.22
1	1600	60	347	0.17
		60	480	0.13
1	1750	70	120	0.58
		70	208	0.34
		70	240	0.29
		70	277	0.25
1	1850	70	347	0.20
		70	480	0.15
1	2600	100	120	0.83
		100	208	0.48
		100	240	0.42
		100	277	0.36
2	2400	90	347	0.26
		90	480	0.19
2	3500	135	120	1.13
		135	208	0.65
		135	240	0.56
		135	277	0.49
		135	347	0.39
2	5000	135	480	0.28
		200	120	1.67
		200	208	0.96
		200	240	0.83
		200	277	0.72
		200	347	0.58
		200	480	0.42

# MOUNTING

1/2"Knuckle Mount (15W/27W/45W/60W)

Trunnion Mount (15W/27W/45W/60W)

Yoke Mount(70W/100W/135W/200W)

Slipfitter Mount(70W/100W/135W/200W)



# ORDERING GUIDE

Example:FDK-FL-F1-27W27V50K-YYYYYY

Fixture Type	Wattage	Voltage	CCT	Dimmable	Finish	Photocell (Option)	Nema	Mounting	Internal Code
<input type="text"/>	<input type="text"/>	<input type="text"/>	<input type="text"/>	<input type="text"/>	<input type="text"/>	<input type="text"/>	<input type="text"/>	<input type="text"/>	<input type="text"/>
<b>FDK-FL-F1</b> Fudakin Flood Light F1 Series	<b>15</b> 15W <b>27</b> 27W <b>45</b> 45W <b>60</b> 60W <b>70</b> 70W <b>90</b> 90W <b>100</b> 100W <b>135</b> 135W <b>200</b> 200W	<b>27V</b> 120-277V <b>48V</b> 347-480V	<b>30K</b> 3000K <b>40K</b> 4000K <b>50K</b> 5000K	<b>D</b> 1-10V DIM <b>N</b> NO DIM	<b>D</b> Dark Bronze <b>B</b> Black <b>W</b> White	<b>P0</b> With Photocell <b>Blank</b> Without Photocell	<b>B76</b> 7HX6V	<b>TR</b> Trunnion Mount <b>KN</b> Knuckle Mount <b>YK</b> Yoke <b>SP</b> Slipfitter Mount	<b>Blank</b> <b>Alphanumeric</b>

Note: 1. 15W,27W,45W,60W only suitable for non dimming.  
 2. 70W with dimming and non dimming options.  
 3. 90W,100W,135W,200W only suitable for dimming.  
 4. Only 60W,70W,90W,135W,200W suitable for 347-480V input valtage.

DLC Model NO.

SYSTEM WATTS	VOLTAGE	CCT	DLC NO.	DLC Classification
15W	120-277V	3000K	FDK-FL-F1-15W-27V-30K[D,B,W][P0,Blank]B76[KN,TR][X,Blank]	Premium
		3500K	FDK-FL-F1-115W-27V-35K[D,B,W][P0,Blank]B76[KN,TR][X,Blank]	Premium
		4000K	FDK-FL-F1-15W-27V-40K[D,B,W][P0,Blank]B76[KN,TR][X,Blank]	Premium
		5000K	FDK-FL-F1-15W-27V-50K[D,B,W][P0,Blank]B76[KN,TR][X,Blank]	Premium
27W	120-277V	3000K	FDK-FL-F1-27W-27V-30K[D,B,W][P0,Blank]B76[KN,TR][X,Blank]	Premium
		3500K	FDK-FL-F1-27W-27V-35K[D,B,W][P0,Blank]B76[KN,TR][X,Blank]	Premium
		4000K	FDK-FL-F1-27W-27V-40K[D,B,W][P0,Blank]B76[KN,TR][X,Blank]	Premium
		5000K	FDK-FL-F1-27W-27V-50K[D,B,W][P0,Blank]B76[KN,TR][X,Blank]	Premium
45W	120-277V	3000K	FDK-FL-F1-45W-27V-30K[D,B,W][P0,Blank]B76[KN,TR][X,Blank]	Premium
		3500K	FDK-FL-F1-45W-27V-35K[D,B,W][P0,Blank]B76[KN,TR][X,Blank]	Premium
		4000K	FDK-FL-F1-45W-27V-40K[D,B,W][P0,Blank]B76[KN,TR][X,Blank]	Premium
		5000K	FDK-FL-F1-45W-27V-50K[D,B,W][P0,Blank]B76[KN,TR][X,Blank]	Premium
60W	120-277V	3000K	FDK-FL-F1-60W-27V-30K[D,B,W][P0,Blank]B76[KN,TR][X,Blank]	Premium
		3500K	FDK-FL-F1-60W-27V-35K[D,B,W][P0,Blank]B76[KN,TR][X,Blank]	Premium
		4000K	FDK-FL-F1-60W-27V-40K[D,B,W][P0,Blank]B76[KN,TR][X,Blank]	Premium
		5000K	FDK-FL-F1-60W-27V-50K[D,B,W][P0,Blank]B76[KN,TR][X,Blank]	Premium
60W	347-480V	3000K	FDK-FL-F1-60W-48V-30K[D,B,W][P0,Blank]B76[KN,TR][X,Blank]	Premium
		3500K	FDK-FL-F1-60W-48V-35K[D,B,W][P0,Blank]B76[KN,TR][X,Blank]	Premium
		4000K	FDK-FL-F1-60W-48V-40K[D,B,W][P0,Blank]B76[KN,TR][X,Blank]	Premium
		5000K	FDK-FL-F1-60W-48V-50K[D,B,W][P0,Blank]B76[KN,TR][X,Blank]	Premium
70W	120-277V	3000K	FDK-FL-F1-70W-27V-30K[D,B,W][P0,Blank]B76[YK,TR][X,Blank]	Premium
		3500K	FDK-FL-F1-70W-27V-35K[D,B,W][P0,Blank]B76[YK,TR][X,Blank]	Premium
		4000K	FDK-FL-F1-70W-27V-40K[D,B,W][P0,Blank]B76[YK,TR][X,Blank]	Premium
		5000K	FDK-FL-F1-70W-27V-50K[D,B,W][P0,Blank]B76[YK,TR][X,Blank]	Premium
70W	347-480V	3000K	FDK-FL-F1-70W-48V-30K[D,B,W][P0,Blank]B76[YK,SP][X,Blank]	Premium
		3500K	FDK-FL-F1-70W-48V-35K[D,B,W][P0,Blank]B76[YK,SP][X,Blank]	Premium
		4000K	FDK-FL-F1-70W-48V-40K[D,B,W][P0,Blank]B76[YK,SP][X,Blank]	Premium
		5000K	FDK-FL-F1-70W-48V-50K[D,B,W][P0,Blank]B76[YK,SP][X,Blank]	Premium
100W	120-277V	3000K	FDK-FL-F1-100W-27V-30K[D,B,W][P0,Blank]B76[YK,SP][X,Blank]	Premium
		3500K	FDK-FL-F1-100W-27V-35K[D,B,W][P0,Blank]B76[YK,SP][X,Blank]	Premium
		4000K	FDK-FL-F1-100W-27V-40K[D,B,W][P0,Blank]B76[YK,SP][X,Blank]	Premium
		5000K	FDK-FL-F1-100W-27V-50K[D,B,W][P0,Blank]B76[YK,SP][X,Blank]	Premium
90W	347-480V	3000K	FDK-FL-F1-90W-48V-30K[D,B,W][P0,Blank]B76[YK,SP][X,Blank]	Premium
		3500K	FDK-FL-F1-90W-48V-35K[D,B,W][P0,Blank]B76[YK,SP][X,Blank]	Premium
		4000K	FDK-FL-F1-90W-48V-40K[D,B,W][P0,Blank]B76[YK,SP][X,Blank]	Premium
		5000K	FDK-FL-F1-90W-48V-50K[D,B,W][P0,Blank]B76[YK,SP][X,Blank]	Premium

