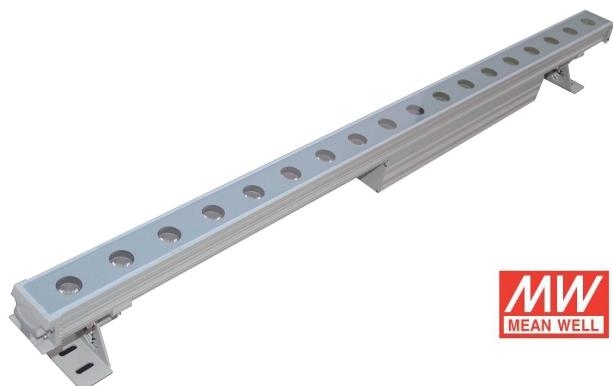


## F1 Series Wall Wash



### Description:

FUDAKIN Wall Wash is a power LED projection lighting product. It uses 18 / 24 / 36 power 1W LEDs as the light sources, adopt AL6063 high-quality aluminum heat lamp body, surface anodic oxidation, acid proof, corrosion resistant, toughened glass. The projecting angle and position are alternative so the best light effects can be achieved.



### Features:

- Standard length: 1000mm(40inch)
- Material & finish: powder painted anodized aluminum
- Powder painted color and length can be customized
- Rated power: 18W / 24W /36W
- Input Voltage: 110-240V AC
- Red, Yellow, Blue, Green, White, RGB available
- Projecting distance: 3-5m
- Working temperature range -25°C~+45°C
- IP Grade: IP65
- Brand of Driver: MEAN WELL
- Brand of LED: Epistar, Bridgelux, Philips or CREE

### Application:

Mainly used as signboard, building, square decoration and lighting. Also used in park, garden, grass, walking street, parking lot, etc. And it can be used in government lighting construction, commercial, subway, flyover and building's flood lighting.

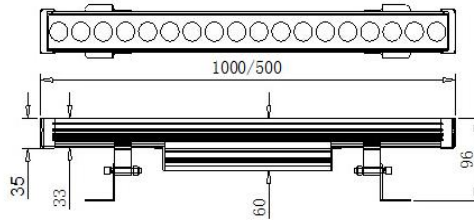


# 5 FIVE YEARS WARRANTY

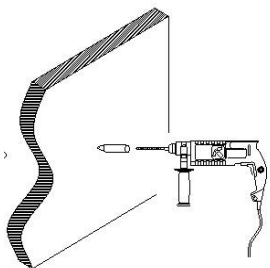
## Specifications:

Model No.	Power(W)	LED Type	Color	Beam Angle (degrees)	IP	Voltage	Projecting Distance (meters)	Net weight (kg)
FDK-WW-F1-18W	18	1W LED	3000K 4000K 5000K	25/45/60/90	65	110-240V AC	2m	2.5
FDK-WW-F1-24W	24	1W LED	3000K 4000K 5000K	25/45/60/90	65	110-240V AC	3m	2.8
FDK-WW-F1-36W	36	1W LED	3000K 4000K 5000K	25/45/60/90	65	110-240V AC	5m	3.2

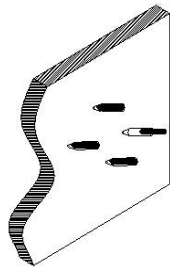
## Product size(mm):



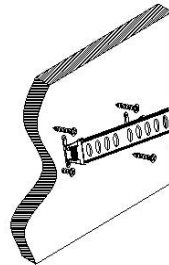
## Installation Drawing:



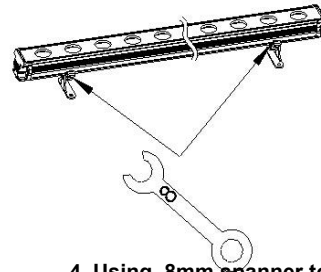
1. make sure the installation position first and drilling hole



2. put expansion of plastic plug into the hole

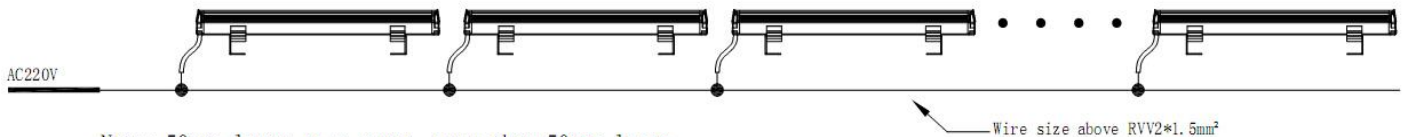


3. install the screws into expansion of plastic plug to fix the light on the wall



4. Using 8mm spanner to Adjust the projection angle and fix the light

## Wiring Diagram:



Note: 50pcs lamps as a group, more than 50pcs lamps need to increase input power line.

## Notice:

1. Please read the specification first, to make sure the service environment matches the conditions in the specification before using.
2. Please confirm the applicable power supply before using
3. Make sure the switch is off before connect to the power supply to prevent electric shock.
4. Operation against rules may damage your property even harm to your personal safety.
5. Preliminarily estimate required quantity of wall washers, then according to the power rating of single wall washer to figure out the total power and design power supply plan.
6. Dangerous high voltage, Non-professionals are not allowed to maintain the products.
7. If the exterior flexible cable or wire is damaged, it must exchange by the supplier, its agent or other relevant qualified personnels to avoid dangers.



# 5 FIVE YEARS WARRANTY