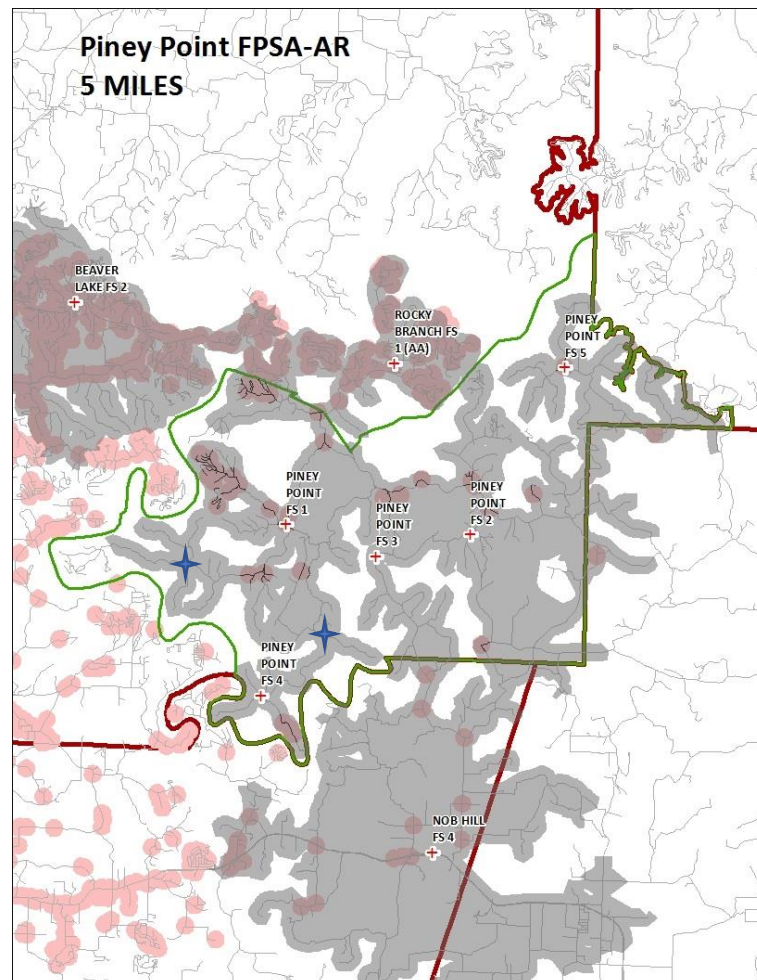


Analysis of PPVFD's PPC Summary Report

1. Our Protection Classification (PPC) became effective on January 1, 2019.
2. A community's PPC grade depends on: **Needed Fire Flows, Emergency Communications (10%, 10 pts), Fire Department (50%, 50 pts), Water Supply (40%, 40 pts)**
3. Piney Point Volunteer Fire Department's Total Credit was **42.65** (40.4%) out of a possible **105.50**
4. Our PPC is a split classification **6/6X**. (Class 6X is equivalent to a 9 in the old system.) This is up from Class **9**. Our rating of 6 is valid within 5 road miles of the responding fire station and 1000 feet of a creditable water supply (e.g., fire hydrant, suction point, or dry hydrant). Our rating of 6X is valid within 5 road miles of the responding fire station but beyond 1000 feet of a creditable water supply (e.g., fire hydrant, suction point, or dry hydrant).

See the figure below. Inside a round red/pink circle implies a Class 6 rating. Outside the round/pink circle and in the gray are implies a Class 6X = Class 9 rating.



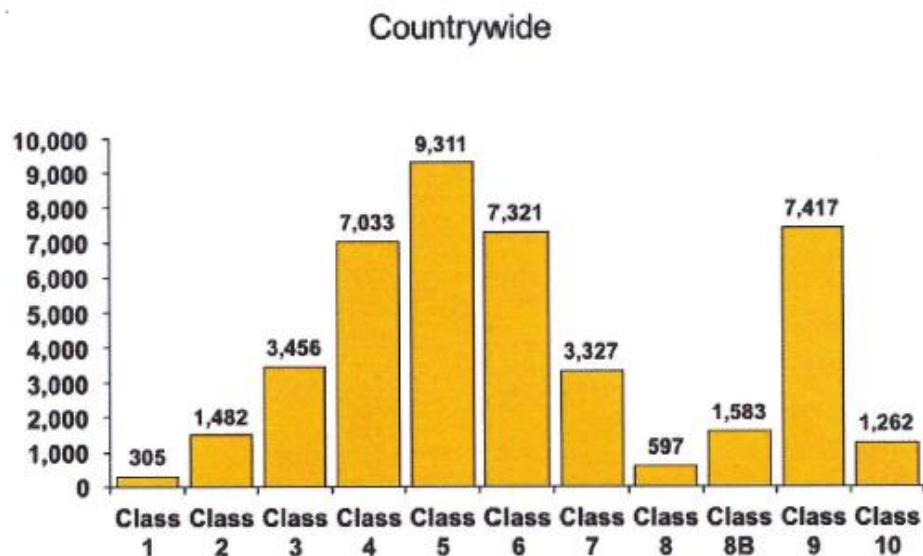
5. In 2017, the percentage of each classification is as follows:

- ≥ 90 , Class 1 0.71%
- ≥ 80 , Class 2 3.4%
- ≥ 70 , Class 3 8.02%
- ≥ 60 , Class 4 16.3%
- ≥ 50 , Class 5 21.6%
- ≥ 40 , Class 6 17.0%
- ≥ 30 , Class 7 7.72%
- ≥ 20 , Class 8 1.38%
- ≥ 20 , Class 8B 3.67%
- ≥ 10 , Class 9 17.2%
- < 10 , Class 10 2.93%

5. How did PPVFD stack up against the rest of the country? Below is a histogram of community PPC grades, **N = 43,094**.

Distribution of PPC Grades

The 2017 published countrywide distribution of communities by the PPC grade is as follows:



6. How close were we to earning a higher PPC grade? We needed:

- **7.35** more credits for a **5/5X**.
- **17.35** more credits for a **4/4X**.
- **27.35** more credits for a **3/3X**.
- **37.35** more credits for a **2/2X**.
- **47.35** more credits for a **1/1X**.

7. FSRS Features and Scores

Emergency Communications, 8.80 of 10 = **88%** of the points

This score is largely a report card on Benton County CENCOM.

432. Credit for Dispatch Circuits	1.8 of 3	(-2.2)
-----------------------------------	----------	--------

Fire Department, 14.4 of 50 = **28.8%** of the points

This score is largely a report card on PPFd.

513. Credit for Engine Companies	4.12 of 6	(-1.88)
----------------------------------	-----------	---------

523. Credit for Reserve Pumpers	0 of 0.5	(-0.5)
---------------------------------	----------	--------

532. Credit for Pumper Capacity	3 of 3	(-0.0)
---------------------------------	--------	--------

549. Credit for Ladder Service	0.62 of 4	(-3.38)
--------------------------------	-----------	---------

553. Credit for Reserve Ladder & Service Trucks	0 of 0.5	(-0.5)
-------------------------------------------------	----------	--------

561. Credit for Deployment Analysis,	1.56 of 10	(-8.44)
--------------------------------------	------------	---------

571. Credit for Company Personnel	2.41 of 15	(-12.59)
-----------------------------------	------------	----------

581. Credit for Training	0.69 of 9	(-8.31)
--------------------------	-----------	---------

A. Facilities and Use	0.0 of 35
-----------------------	-----------

B. Company Training	2.08 of 25
---------------------	------------

C. Classes for Officers	1.20 of 12
-------------------------	------------

D. New Driver and Operator Training	1.25 of 5
-------------------------------------	-----------

E. Existing Driver and Operator Training	2.50 of 5
------------------------------------------	-----------

F. Training on Hazardous Materials	0.0 of 1
------------------------------------	----------

G. Recruit Training	0.63 of 5
---------------------	-----------

H. Pre-Fire Planning Inspections	0.0 of 12
----------------------------------	-----------

730. Credit for Operational Considerations	2.0 of 2	(-0.0)
--------------------------------------------	----------	--------

Water Supply, 20.59 of 40 = **51.5%** of the points

616. Credit for Supply System	14.5 of 30	(-15.5)
-------------------------------	------------	---------

621. Credit for Hydrants	2.92 of 3	(-0.08)
--------------------------	-----------	---------


6.31 Credit for Inspection and Flow Testing,	3.17 of 7	(-3.83)
----------------------------------------------	-----------	---------

<u>Divergence</u>		(-4.54)
-------------------	--	---------

Community Risk Reduction, 3.4 of 5.50 = **61.8%** of the points

1025. Credit for Fire Prev. and Code Enforcement (CPCE), 1.87 of 2.2	(-0.33)
1033. Credit for Public Fire Safety Education (CFSE), 0.55 of 2.2	(-1.65)
1044. Credit for Fire Investigation Programs (CIP), 0.98 of 1.1	(-0.12)

Summary of Phone Conversation with Mr. Charles Copple of ISO.

- Chuck is willing to meet with the Board at any time. He just needs a 1-2 week notice.
- Alternative: Marc and Eric “very good understanding of system”
- He said Station 4 location would be better if it was further NE or NW. See  in map above.
- Should ask Benton County GIS for an accurate map where 5 miles ends from each station
- Option 1: A Perfect World...all is great
 - Enough people to show up for a structural fire (i.e., avg. ≥ 4.5 in bunker gear) **and** have manpower to run tender(s) for water supply
 - Station 4 needs a small tender, we are “really close ~ 500 gallons,” < 2000 gallons
 - Station 5 needs a big tender, ≥ 4000 gallons
- Problem? Purchasing tenders now would be a “waste of money.” You presently do NOT have the manpower to credibly respond out of Station 4 and Station 5
- “You need more manpower.” (See 571 above.)
- Option 2: A Non-Perfect World...all is not great
 - Distance from Station 2 to Station 5 is ~8-9 miles taking ~ 21-22 minutes
 - Worry about Station 4
 - Unrecognize Station 5; re-open in such time when more people are engaged
 - Beyond 5 miles of Station 2 – Class 10
 - Likely “lose ground” from 6/6X to 7/10 due to “other categories”
 - Cover 900 or so citizens with Class 7 versus the few now with Class 6