



# TEDD WOOD

---

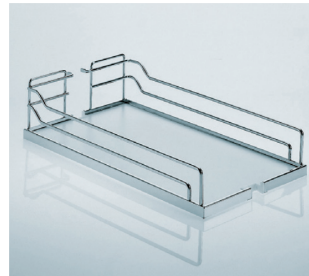
## FINE CABINETRY

---



## DISPENSA

- Total pull-out sliding shelf system for face frame and frameless applications.
- Equipped with Arena shelves.
- Anti-slip melamine surface for enhanced stability and noise reduction.
- To be installed on the upper and lower interior surface of your pantry.
- Equipped with a shock-absorbing mechanism for a soft closing.
- Complete access to the cabinet content in one movement.
- Weight capacity: max. 265 lb (120 kg).
- Height-adjustable frames for interior heights of 31 1/2" to 90 1/2" (800 to 2300 mm).
- Frame finish: silver gray or champagne.
- Arena shelves finish: gray/chrome or maple/champagne.
- Shelves are offered in set of 2 units.
- 10 different shelf widths from 8" to 22" (203 to 559 mm).



Gray/chrome



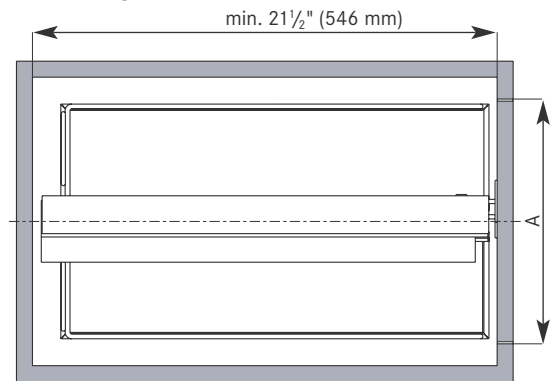
Maple/champagne

**Note:** The Pantry Pull Out systems are currently available in maple/champagne in the Tedd Wood Custom specification book

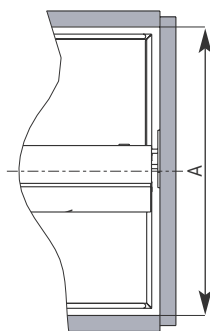
# PULL-OUT PANTRY SYSTEMS



## FRAMED CABINET



## FRAMELESS CABINET



### Frame set

includes frame, runner, door brackets and integrated soft closers:

FRAME DIMENSIONS (WxDxH*)	SILVER GRAY	CHAMPAGNE	NUMBER OF SHELF SETS
4 3/4" x 21 3/8" x 31 1/2" - 47 1/4" (121 x 543 x 800 - 1200 mm)	<b>24160100</b>	<b>24160155</b>	1-2 sets of two shelves
4 3/4" x 21 3/8" x 47 1/4" - 62 7/8" (121 x 543 x 1200 - 1600 mm)	<b>24260100</b>	<b>24260155</b>	2-3 sets of two shelves
4 3/4" x 21 3/8" x 62 7/8" - 78 3/4" (121 x 543 x 1600 - 2000 mm)	<b>24382100</b>	<b>24382155</b>	3-4 sets of two shelves
4 3/4" x 21 3/8" x 74 3/4" - 90 1/2" (121 x 543 x 1900 - 2300 mm)	<b>24383100</b>	<b>24383155</b>	3-4 sets of two shelves

\*H = Cabinet interior height

### Arena shelves (set of 2 shelves)

D: 20 3/8" (518 mm) - H: 4 1/8" (105 mm)

MIN. OPENING WIDTH (A)	SHELF DIMENSIONS (WxDxH)	GRAY/CHROME	MAPLE/CHAMPAGNE
8 1/2" (216 mm)	8" x 20 3/8" x 4 1/8" (203 x 518 x 105 mm)	<b>25140100</b>	<b>25155150</b>
10 1/2" (267 mm)	10" x 20 3/8" x 4 1/8" (254 x 518 x 105 mm)	<b>35140100</b>	<b>35155150</b>
11 1/2" (292 mm)	11" x 20 3/8" x 4 1/8" (279 x 518 x 105 mm)	<b>26140100</b>	<b>26155150</b>
13 1/2" (343 mm)	13" x 20 3/8" x 4 1/8" (330 x 518 x 105 mm)	<b>36140100</b>	<b>36155150</b>
14 1/2" (368 mm)	14" x 20 3/8" x 4 1/8" (356 x 518 x 105 mm)	<b>27140100</b>	<b>27155150</b>
16 1/2" (419 mm)	16" x 20 3/8" x 4 1/8" (406 x 518 x 105 mm)	<b>37140100</b>	<b>37155150</b>
17 1/2" (445 mm)	17" x 20 3/8" x 4 1/8" (432 x 518 x 105 mm)	<b>28140100</b>	<b>28155150</b>
19 1/2" (495 mm)	19" x 20 3/8" x 4 1/8" (483 x 518 x 105 mm)	<b>38140100</b>	<b>38155150</b>
20 1/2" (520 mm)	20" x 20 3/8" x 4 1/8" (508 x 518 x 105 mm)	<b>39140100</b>	<b>39155150</b>
22 1/2" (572 mm)	22" x 20 3/8" x 4 1/8" (559 x 518 x 105 mm)	<b>40140100</b>	<b>40155150</b>

### NOTES:

- DOOR MOUNTED • 1 SET INCLUDES 2 SHELVES • WORKS WITH OVERLAY AND INSET DOORS

### Accessories

DESCRIPTION	SILVER GRAY	CHAMPAGNE	SOLD BY
Extra shelf holder - use to add more shelves when frame extended more than 8" (203 mm)	<b>4276100</b>	<b>4276155</b>	Pair
Door stabilizer - for more stability between frame and door	<b>4350100</b>	<b>4350155</b>	Piece



No. 4276XXX  
Extra shelf holder



No. 4350XXX  
Door stabilizer





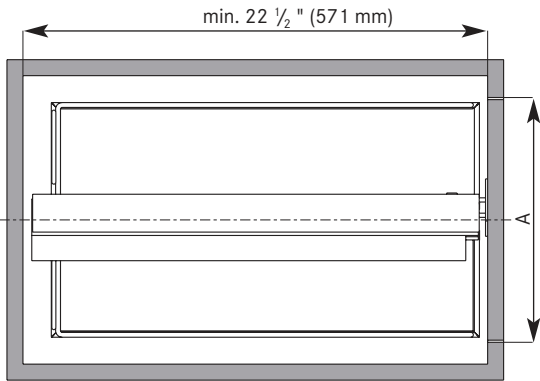
## BASE PULL-OUT II

- Full-extension slides for excellent view and optimal access to stored items.
- Offered with slow-motion device for a smooth closing.
- Top and bottom mounted: easy installation.
- Hooks on the frame allow shelves to be adjusted in height.
- Door-mounted application for a complete access in one motion.
- 3-way door adjustment (door brackets included).
- Frame finish: silver gray or champagne.
- Arena shelves with anti-slip melamine surface: gray/chrome or maple/champagne finish.
- Weight capacity: 60 lb (27.5 kg).
- Thinner top rail for easier access to the contents.
- Ideal for full height base cabinets.
- Shelves are offered in set of 2 units.

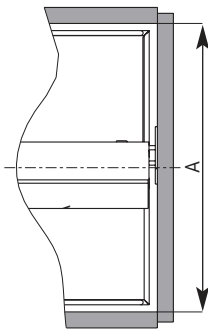
**Interior depth required:** min. 22 1/2" (571 mm)

**Note:** The Base Pantry Pull Out systems are currently available in maple/champagne in the Tedd Wood Custom specification book.

### FRAMED CABINET



### FRAMELESS CABINET



### Frame set

includes frame, runner, door brackets and integrated soft closers:

FRAME DIMENSIONS (WxDxH*)	SETS OF TRAYS	SILVER GRAY	CHAMPAGNE
3 3/4" x 22" x 24" - 32" (95 x 559 x 610 - 813 mm)	1	<b>2663100</b>	<b>2663155</b>

\*H = Cabinet interior height

DESCRIPTION	DIMENSIONS	SILVER GRAY	CHAMPAGNE
Extra Shelf Holder*	Height 4" (102 mm)	<b>4255100</b>	<b>4255155</b>
Wide door bracket	5 1/2" (140mm) L x 1 1/2" (38mm) H	<b>2647100</b>	<b>2647155</b>



Extra Shelf Holder

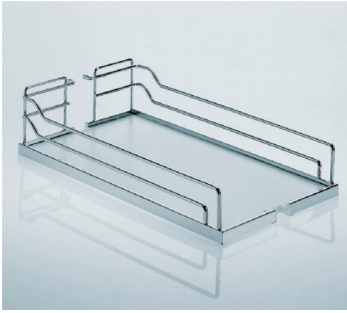
\* Can only be used for frame height of 28 1/8" (715 mm) or more



The wide front fixing bracket is required for all cabinets that are wider than 15" (381 mm). Optional for less than 15" (381 mm). This will replace the original lower bracket only.



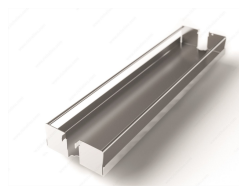
# SLIDING STORAGE SYSTEMS



Gray/chrome



Maple/champagne



Metal tray

## Arena shelves (set of 2 shelves)

MIN. OPENING WIDTH (A)	SHELF DIMENSIONS (WxDxH)	GRAY/CHROME	MAPLE/CHAMPAGNE
4 1/2" (114 mm)	4" x 20 3/8" x 4 1/8" (102 x 518 x 105 mm)	<b>33140100</b>	<b>33155150</b>
5 1/2" (140 mm)	5" x 20 3/8" x 4 1/8" (127 x 518 x 105 mm)	<b>24140100</b>	<b>24155150</b>
7 1/2" (191 mm)	7" x 20 3/8" x 4 1/8" (178 x 518 x 105 mm)	<b>34140100</b>	<b>34155150</b>
8 1/2" (216 mm)	8" x 20 3/8" x 4 1/8" (203 x 518 x 105 mm)	<b>25140100</b>	<b>25155150</b>
10 1/2" (267 mm)	10" x 20 3/8" x 4 1/8" (254 x 518 x 105 mm)	<b>35140100</b>	<b>35155150</b>
11 1/2" (292 mm)	11" x 20 3/8" x 4 1/8" (279 x 518 x 105 mm)	<b>26140100</b>	<b>26155150</b>
13 1/2" (343 mm)	13" x 20 3/8" x 4 1/8" (330 x 518 x 105 mm)	<b>36140100</b>	<b>36155150</b>
14 1/2" (368 mm)	14" x 20 3/8" x 4 1/8" (356 x 518 x 105 mm)	<b>27140100</b>	<b>27155150</b>
16 1/2" (419 mm)	16" x 20 3/8" x 4 1/8" (406 x 518 x 105 mm)	<b>37140100</b>	<b>37155150</b>
17 1/2" (445 mm)	17" x 20 3/8" x 4 1/8" (432 x 518 x 105 mm)	<b>28140100</b>	<b>28155150</b>
19 1/2" (495 mm)	19" x 20 3/8" x 4 1/8" (483 x 518 x 105 mm)	<b>38140100</b>	<b>38155150</b>
20 1/2" (521 mm)	20" x 20 3/8" x 4 1/8" (508 x 518 x 105 mm)	<b>39140100</b>	<b>39155150</b>
22 1/2" (572 mm)	22" x 20 3/8" x 4 1/8" (559 x 518 x 105 mm)	<b>40140100</b>	<b>40155150</b>

**NOTE:** • DOOR MOUNTED

## Metal Shelves (set of 2 shelves)

MIN. OPENING WIDTH	DIMENSIONS (WxDxH)	SILVER GRAY	CHAMPAGNE
3 7/8" (98 mm)	3 3/8" x 20 3/8" x 4 1/8" (98 mm x 518 mm x 105 mm)	<b>25474100</b>	<b>25474155</b>
4 1/2" (114 mm)	4" x 20 3/8" x 4 1/8" (114 mm x 518 mm x 105 mm)	<b>25475100</b>	<b>25475155</b>
5 1/2" (140 mm)	5" x 20 3/8" x 4 1/8" (140 mm x 518 mm x 105 mm)	<b>25476100</b>	<b>25476155</b>
7 1/2" (191 mm)	7" x 20 3/8" x 4 1/8" (191 mm x 518 mm x 105 mm)	<b>25477100</b>	<b>25477155</b>

## Accessories

MIN. OPENING WIDTH	DESCRIPTION	DIMENSIONS (WxDxH)	SILVER GRAY	CHAMPAGNE
10 1/2" (267 mm)*	Youbox set 1	4 1/2" x 17 1/4" X 7 7/8" (114 mm x 438 mm x 200 mm)	<b>25464100</b>	<b>25464155</b>
10 1/2" (267 mm)*	Youbox set 2	4 1/2" x 17 1/4" X 3 3/4" (114 mm x 438 mm x 95 mm)	<b>25465100</b>	<b>25465155</b>
3 7/8" (98 mm)	Bakers tray 3 5/16"	3 3/8" x 20 3/8" x min. 8" (86 mm x 518 mm x min. 203 mm)	<b>25556100</b>	<b>25556155</b>
5 1/2" (140 mm)	Bakers tray 5"	5" x 20 3/8" x min. 8" (127 mm x 518 mm x min. 203 mm)	<b>25557100</b>	<b>25557155</b>
7 1/2" (191 mm)	Bakers tray 7"	7" x 20 3/8" x min. 8" (178 mm x 518 mm x min. 203 mm)	<b>25558100</b>	<b>25558155</b>
10 1/2" (267 mm)*	Spice tray BPO II 4 3/8"	4 1/2" x 20 1/2" x 1 1/2" (114 mm x 521 mm x 38 mm)	<b>25771100</b>	<b>25771155</b>



Spice tray (sold per unit)

\* The min. opening is for 2 spice trays, one on each side of the frame. (Recommended)



Youbox set 1



Youbox set 2

\* Based on installing 1 set of rails on each side of the frame (Recommended)



Bakers tray



## TWISTER

- Suitable for upper corner cabinets.
- Pole located at the rear of the shelves offering larger storage space and better access.
- Height-adjustable pole.
- Arena shelves with anti-slip surface.
- Weight capacity per shelf: 18 lb (8 kg).
- Optimal D-shape for storage maximization.



NO.	DESCRIPTION	INTERIOR HEIGHT	DIAMETER	FINISH
<b>2561140100</b>	Twister 2 shelves	25 15/16" to 30 1/2" (658 to 774 mm)	19 11/16" (500 mm)	Gray/chrome
<b>2562140100</b>	Twister 3 shelves	32" to 36 1/2" (812 to 927 mm)	19 11/16" (500 mm)	Gray/chrome
		Min. interior depth: 22 1/8" (562 mm)		

NO.	DESCRIPTION	INTERIOR HEIGHT	DIAMETER	FINISH
<b>2561155150</b>	Twister 2 shelves	25 15/16" to 30 1/2" (658 to 774 mm)	19 11/16" (500 mm)	Maple/champagne
<b>2562155150</b>	Twister 3 shelves	32" to 36 1/2" (812 to 927 mm)	19 11/16" (500 mm)	Maple/champagne
		Min. interior depth: 22 1/8" (562 mm)		

# BASE CORNER CABINET

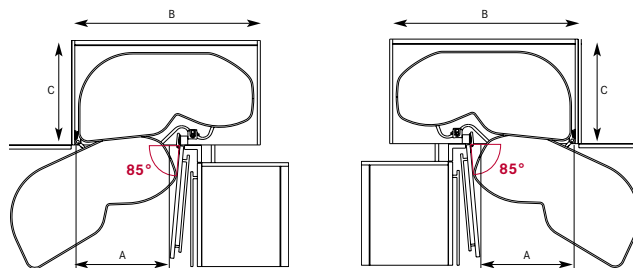


## LEMANS II

- Height-adjustable shelves.
- Arena shelves are equipped with an anti-slip melamine surface ensuring noise reduction during operation.
- Shelves can be pulled out independently.
- Soft-closing mechanism available: to be ordered separately.
- Leaf-shaped shelves designed to maximize space and increase storage surface.
- Weight capacity : 55 lb (25 kg) per shelf.
- Available in 2 finishes:  
gray/chrome or maple/champagne.

SWINGS LEFT

SWINGS RIGHT



Each set includes 2 shelves.

Shelves should be positioned above or below the door hinges.

Door opening required: 85 degrees

**Note:** The 450 and 500 LeMans II units are currently available in the specification books for Landmark, Luxury Line, and Tedd Wood Custom in maple/champagne. Refer to each specification book for details.

DESCRIPTION	OPENING	CHROME	MAPLE/CHAMPAGNE
400	Right	<b>6936140100</b>	<b>6936155150</b>
400	Left	<b>6937140100</b>	<b>6937155150</b>
450	Right	<b>6930140100</b>	<b>6930155150</b>
450	Left	<b>6931140100</b>	<b>6931155150</b>
500	Right	<b>6932140100</b>	<b>6932155150</b>
500	Left	<b>6933140100</b>	<b>6933155150</b>
600	Right	<b>6934140100</b>	<b>6934155150</b>
600	Left	<b>6935140100</b>	<b>6935155150</b>
Soft stop	Right	<b>693802100</b>	<b>693802100</b>
Soft stop	Left	<b>693803100</b>	<b>693803100</b>



Soft-closing mechanism  
**No. 693802100**  
(for right opening system)  
or **No. 693803100**  
(for left opening system)



**No. 693630**  
Opening angle restriction device



**No. 6930100** Filler strips



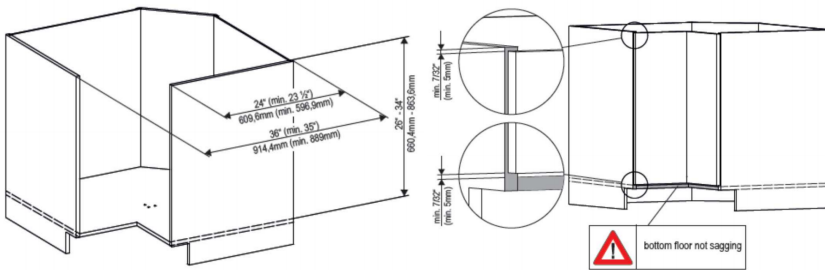
**No. 2504100**  
Highboard silver gray post for 4-shelf application  
H : 49 7/8" (1265 mm)

	DESCRIPTION	MIN. OPENING FACE FRAME (A)	MIN. OPENING FRAMELESS (A)	MIN. INTERIOR WIDTH (B)	MIN. INTERIOR DEPTH (C)	MIN. INTERIOR HEIGHT	
	6936-6937 series	400	14" (355mm)	14 1/4" (362mm)	30 11/16" (780mm)	19 11/16" (500mm)	21 7/16" (545mm)
	6930-6931 series	450	16 1/8" (410 mm)	16 1/2" (419 mm)	32 1/4" (820 mm)	19 3/4" (500 mm)	21 1/2" (545 mm)
	6932-6933 series	500	17 3/4" (450 mm)	18 3/8" (467 mm)	36 1/4" (920 mm)	19 3/4" (500 mm)	21 1/2" (545 mm)
	6934-6935 series	600	21 1/4" (540 mm)	22 1/4" (565 mm)	38" (965 mm)	19 3/4" (500 mm)	21 1/2" (545 mm)



## REVO US

- Works for all cabinet types, (face framed or frame-less).
- Gives an immediate access to your items stored.
- Closing speed of the doors can be adjusted without tools to best suit the comfort level of the user.
- Height adjustable shelves allow consumer to set it to the level that best suits his or her needs.
- The side rail offers a clear view to all of the contents.
- Mechanism is sold separately.
- Weight capacity : 55 lb (25 kg) per shelf.
- Shelves are sold in a box of 2 trays
- Shelves available in 2 finishes:  
maple/champagne or gray/chrome



Min. required for corner cabinet



No. 6950100  
REVO US Mechanism



No. 6863155150  
Maple/ champagne



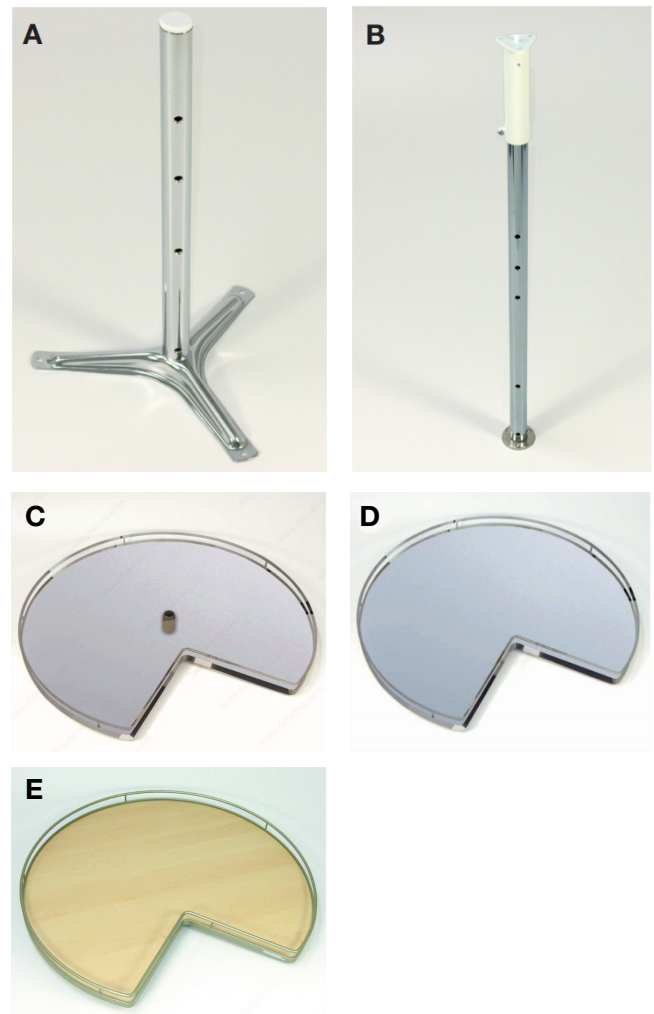
No. 6863140100  
Gray/ chrome

NO.	DESCRIPTION	FINISH	SHELF DIAMETER	MIN. INTERIOR DEPTH	MIN. INTERIOR HEIGHT
6950100	REVO US Mechanism	Silver Gray			26" to 34" (610mm to 813mm)
6863155150	Set of 2 shelves	Maple/ champagne	35 1/2" (902mm)	36" (914mm)	
6863140100	Set of 2 shelves	Gray/ chrome	35 1/2" (902mm)	36" (914mm)	



## KIDNEY LAZY SUSANS AND SUPER SUSANS

- Suitable for base corner cabinets.
- Designed to maximize storage space.
- Each shelf is made of an anti-slip melamine surface with metal surround, ensuring noise reduction during operation.
- Shelves are pivoting independently for easier access.
- Weight capacity: 55 lb (25 kg) per shelf.



**Susan mounted with a post:**  
Choose your type of post and your shelves

**Post**

NO.	DESCRIPTION	INTERIOR HEIGHT	FINISH
A 251140140	Bottom-mounted post	min. 18 13/16" (477 mm)	Chrome
B 252140140	Top- & bottom-mounted adjustable post	25 13/16" to 29 5/16" (656 to 744 mm)	Chrome

**Set of 2 kidney shelves**

NO.	DIAMETER	FINISH
C 254140100	28" (712 mm)	Gray/chrome
C 255140100	32" (813 mm)	Gray/chrome

**Super susan (swivel included) - Total Height: 3"**  
**Set of 2 shelves**

NO.	DIAMETER	FINISH
D 2649140100	28" (712 mm)	Gray/chrome
D 2650140100	32" (813 mm)	Gray/chrome
E 2660155150	32" (813 mm)	Maple/champagne



## D-SHAPED SUSANS

- Suitable for base corner cabinets.
- Designed to maximize storage space.
- Each shelf is made of an anti-slip melamine surface with metal surround, ensuring noise reduction during operation.
- For corner cabinets with middle shelf, opt for the bottom-mounted Super Susans with base swivel.
- Shelves are pivoting independently for easier access.
- Weight capacity: 55 lb (25 kg) per shelf.

**Susan mounted on a post:**  
Choose your type of post and your shelves

### Post

NO.	DESCRIPTION	INTERIOR HEIGHT	FINISH
A	251140140 Bottom-mounted post	Min. 18 13/16" (477 mm)	Chrome
B	252140140 Top- & bottom-mounted adjustable post	25 13/16" to 29 5/16" (656 to 744 mm)	Chrome

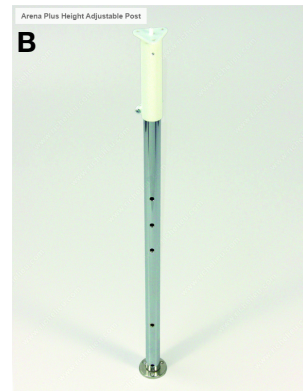
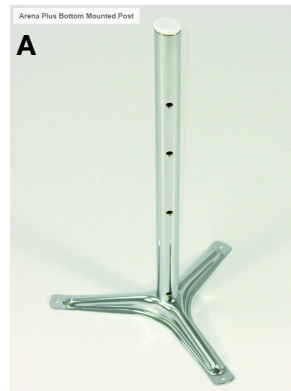
### Set of 2 shelves

NO.	DIAMETER	FINISH
C	2526140150 26" (660 mm)	Maple/chrome
C	2532140150 32 1/4" (820 mm)	Maple/chrome

**Super Susan (swivel included) - Total height: 3" (77 mm)**

### Set of 2 shelves

NO.	DIAMETER	FINISH
D	2626140150 26" (660 mm)	Maple/chrome
D	2632140150 32 1/4" (820 mm)	Maple/chrome





# BASE CORNER CABINET



## MAGIC CORNER II

- The only system that allows you to bring out the complete cabinet interior outside!
- Ergonomic sliding technology lets the user access the front and rear shelves.
- Once the door is opened, front shelves can be pulled out completely and rear shelves can be pulled out individually.
- Arena shelves with anti-slip surface preventing pots, pans and groceries from sliding and reduce noise.
- Soft-closing mechanism included, allows for a gentle self closing and flowing motion.
- Height-adjustable handle for added comfort and ergonomics.
- Plastic protector clips onto the back shelves to prevent the cabinet door from being scratched.
- Suited for installation in cabinets with hinged doors.
- Weight capacity:  
17 lb (8 kg) per shelf (rear),  
22 lb (10 kg) per shelf (front).



LEFT OPENING

**FOR A COMPLETE SET, ORDER:**  
  
**1 frame (left or right)**  
**+ 1 set of 4 shelves**

INT. HEIGHT	INT. WIDTH (C)	INT.DEPTH (B)	OPENING WIDTH (A)
Min. 21 1/2"	37 7/8" to 46 1/8"	Min. 20"	Min. 19 1/2"
(Min. 545 mm)	(962 to 1171 mm)	(Min. 500 mm)	(Min. 494 mm)

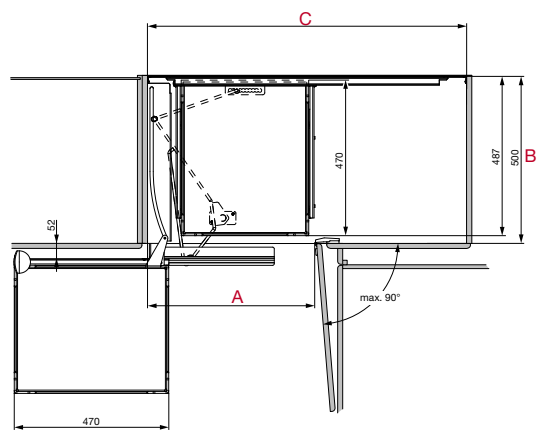
### Frame

DESCRIPTION	NO.	FINISH
Right frame	<b>30592155</b>	Champagne
Left frame	<b>30593155</b>	Champagne

### Shelves

DESCRIPTION	NO.	FINISH
Set of 4 shelves	<b>30598155150</b>	Maple/champagne

### SWINGS LEFT



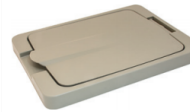


SINGLE BIN ILLUSTRATED

## K RECYCLING CENTER

### Bottom and door-mounted wastebin system with large capacity in a narrow space!

- The frames can be equipped with a "Push to Open" device (No. **61015100** or No. **61015155**) that opens the system with a soft push on the door.
- Available in single or double bin configuration.
- Door mounting brackets with 3 ways adjustments.
- Suitable for cabinets with overlays or inset doors.
- Full-extension undermount slides equipped with a soft closing device.
- Bin capacity: 36 or 52 qt. (34 or 49 l).
- Frame colors available: gray / champagne
- Bin colors: white, gray, champagne.
- Single bin version offers extra storage space at the back, ideal to store cleaning material.
- Weight capacity: 100 lb (45 kg).
- Frame and bins have to be ordered separately, allows you to create multiple configurations.
- Installation template included.



No. **51152155**  
Champagne Lid



No. **51152100**  
Gray Lid



No. **51152030**  
White Lid



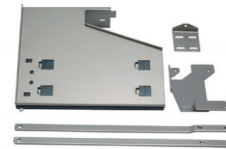
### Installation dimensions for a complete unit:

TYPE	MIN. OPENING WIDTH		MIN. INT. WIDTH	MIN. INT. DEPTH	OPENING HEIGHT
	FACE FRAME	FRAMELESS	FACE FRAME / FRAMELESS		
Single bin	11 1/2" (292 mm)	12 1/2" (318 mm)	12 1/2" (318 mm)	22 1/8" (562 mm)	19 1/4" (488 mm) for 36 qt
Double bin	14 1/2" (368 mm)	15 1/2" (394 mm)	15 1/2" (394mm)	22 1/8" (562 mm)	22 7/8" (581 mm) for 52 qt

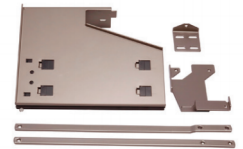
### Frame

NO.	DESCRIPTION	FINISH
<b>61010100</b>	Single bin frame	Gray
<b>61010155</b>	Single bin frame	Champagne
<b>61020100</b>	Double bin frame	Gray
<b>61020155</b>	Double bin frame	Champagne

### "Push to Open" device



No. **61015100**  
PTO mechanism  
Silver gray



No. **61015155**  
PTO mechanism  
Champagne

### Bins

NO.	CAPACITY	FINISH	NO.	CAPACITY	FINISH
<b>5101230</b>	36 qt.	White	<b>5105230</b>	52 qt.	White
<b>51012100</b>	36 qt.	Gray	<b>51052100</b>	52 qt.	Gray
<b>51012155</b>	36 qt.	Champagne	<b>51052155</b>	52 qt.	Champagne

Single bin frame,  
order 1 bin  
Double bin frame,  
order 2 bins

# SLIDING STORAGE SYSTEMS



## COOKO FOR STORING INGREDIENTS AND COOKING UTENSILS

- Modular design that makes it so versatile and flexible. You can really customize your storage organization as needed!
- Bottom mount full-extension pull-out that gives you access to everything at your fingertips.
- Soft-close device included.
- Available in 2 versions: for pull-out door or for hinged door.



NO.	DESCRIPTION	REQUIRED INTERIOR DIMENSIONS (W x D x H)	WEIGHT CAPACITY	FINISH
<b>25234140100</b>	For hinged door	12 1/4" x 19 1/4" x 24 5/8" (310 x 489 x 625 mm)	36 lb (16 kg)	Gray/chrome
<b>25235140100</b>	For pull-out door	10 1/4" x 19 1/4" x 24 5/8" (260 x 489 x 625 mm)	36 lb (16 kg)	Gray/chrome



# TEDD WOOD

---

FINE CABINETS

---