

TEDD WOOD

FINE CABINETS



CUSTOM CABINETS AT AN AFFORDABLE PRICE



LANDMARK

FINE CABINETS

WWW.TEDDWOOD.COM



manufactured in the heart of rural
Pennsylvania with old Dutch

CRAFTSMANSHIP





DOOR STYLES



Arlington RP
Leather Brown w/Bold
Black Shadow on Maple



Boardwalk RRP
Morning Mist on Cherry



Broadway RRP
Espresso on Maple



Capitol RP
Monument Gray on MDF



Camden RRP
Wheat on Cherry



Chadwick RRP
White on QTR Sawn
White Oak



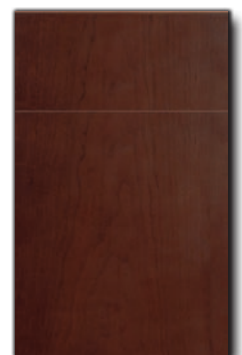
Charleston RRP
Naval w/Bold Black
Shadow on Maple



Cooperstown RP
Leather Brown on Walnut



Empire II FP
Egg Shell on Maple



Four Corners
Richmond on Cherry



French Quarter RRP
Leather Brown on
QTR Sawn White Oak



Gettysburg RRP
Auburn on Rustic Cherry



GLENDALE RRP
Charcoal on
QTR Sawn White Oak



Graceland RP
Frosty White w/Lite Brown
Shadow & Weathered Distressing



HUDSON RP
Ash Gray on Maple



Liberty RRP
Cobblestone on
QTR Sawn White Oak



Lincoln FP
Gray Matters on Maple



Madison Square RP
Colonial on Cherry



Monticello RRP
Colonial on Maple



Niagara FP
Pumice on Maple



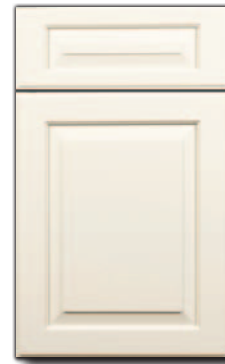
POMONA FP
Graystone on Maple



Preston RP
Slate w/Bold Brushed Black Shadow on Maple



Rainier RRP
Natural on Walnut



Ridgcrest RP
Egg shell on Maple



Rockville FP
Homburg Gray on Maple



Rushmore FP
White on Maple



Teton RRP
Morning Fog w/Lite Black Shadow on Maple



Valley Forge FP
Ash Gray on Maple



VERO RP
Dover White w/ Lite Coffee Shadow



Wakefield RRP
Roasted Almond on Alder



Westminster RRP
Gale Force on Maple



White House RP
White on MDF



Windover RP
Cape May on QTR Sawn White Oak



Woodmont FP
Cottage Blue w/Lite Black Brushed Shadow on Maple



Yellowstone RRP
Morning Mist w/Bold Black Shadow on QTR Sawn White Oak

OPTIONAL OUTSIDE EDGES

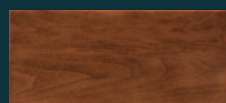


Eased Edge



Transitional Edge

DRAWER HEAD OPTIONS



Slab



Decorative Slab



Flat Panel



Raised Panel



FULL OVERLAY

Full Overlay **Landmark** cabinetry provides a “traditional” look with the doors and drawers sitting “atop” and covering the face frame of the cabinetry with 1/4” reveal of the face frame.



BEADED INSET

Beaded Inset **Landmark** cabinetry allows for the doors and drawers to sit “inside” and “flush” to the face frame of the cabinetry which includes a 1/4” rounded/beaded groove on the inside of the frame, using inset concealed hinging which provides a consistent outside margin between doors/drawers and frame as well as the butt doors.



SQUARE INSET

Square Inset **Landmark** cabinetry allows for the doors and drawers to sit “inside” and “flush” to the face frame of the cabinetry using inset concealed hinging which provides a consistent outside margin between doors/drawers and frame as well as the butt doors.

WOOD SPECIES



Cherry / Rustic Cherry

The sapwood is light yellow to white and the heartwood is brownish with green tinge which darkens upon exposure to a deep reddish brown with a golden luster. There are occasional pitch pockets, mineral streaks, pin knots and gum in the wood. Rustic Cherry will have more prevalent split knots and open knots. Over time and with exposure to sunlight Cherry / Rustic Cherry will darken slightly in color.



Quarter Sawn White Oak

The sapwood of oak is white to very light brown. Heartwood is light to dark brown. Oak wood has a course texture which is heavy, straight-grained, hard, tough, very stiff and strong. “Quarter Sawn” grade is specially cut White Oak lumber where logs are quartered and sliced across the grain resulting in a tight, straight grain pattern. Quarter Sawn lumber contains a distinct characteristic called medullar wood rays or “flake”.



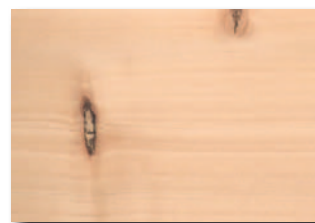
Walnut

Walnut is a heavy, strong wood that ranges in color from off-white to dark brown. It can have curly grain, streaky color and occasional mineral and pin knots.



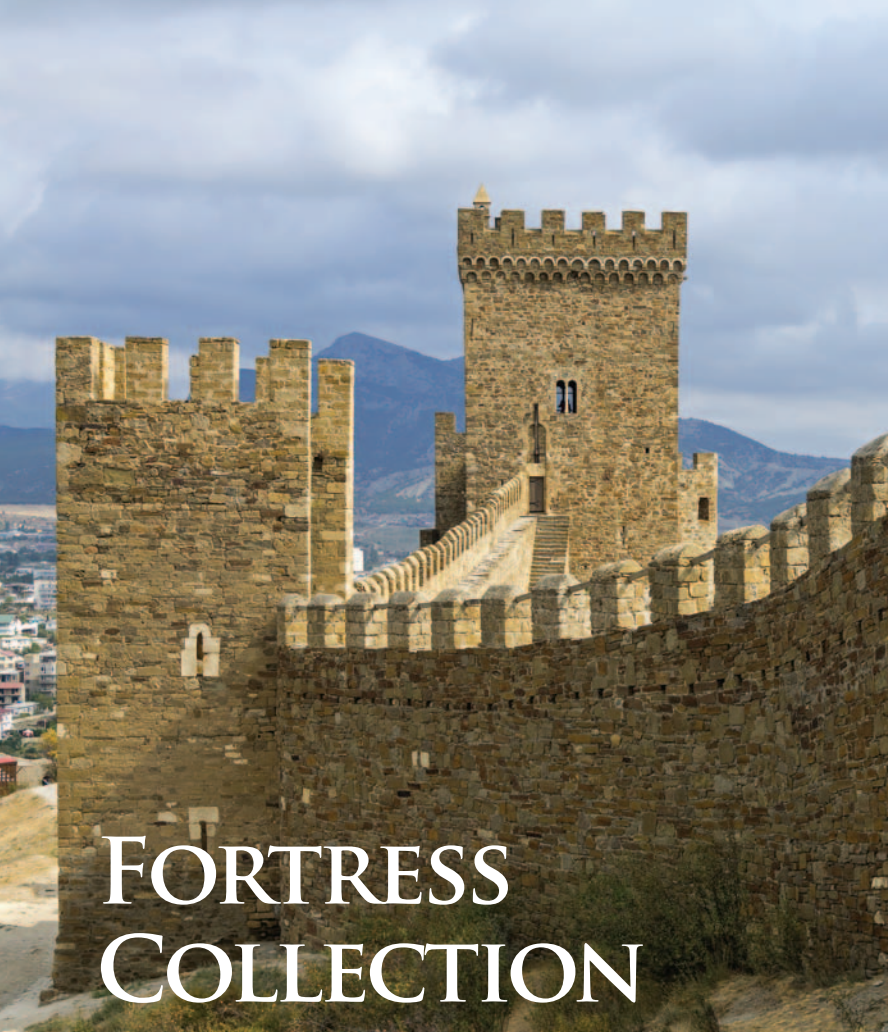
Maple

Hard white maple has a fine, uniform texture with curly grain, sugar streaks, occasional mineral streaks and pin knots. It is heavy, strong, stiff, hard and resistant to shock. The color ranges from white with a slight reddish-brown tinge to a light reddish-brown.



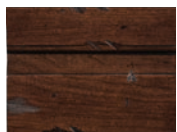
Alder / Knotty Alder

Alder has a consistent color that ranges from pale pinkish-brown to almost white. It has a fine, straight, tight grain with uniform texture with some small pin knots that form a beautiful swirl. Knotty Alder is more rustic in appearance with large split knots and open knots that vary in size.



FORTRESS COLLECTION

Our **Fortress Collection** includes unique and various hand-applied antiqued and/or distressed finishes which create an aged and timeless look that will help you achieve that old world expression for your home.



Alamo

Available in Cherry, Rustic Cherry, Alder and Knotty Alder.



Bragg

Available in Maple.



Independence

Available in Maple.



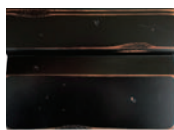
Loudon

Available in Quarter Sawn White Oak.



MacArthur

Available in Maple.



McHenry

Available in Maple and Cherry.



Meade

Available in Knotty Alder.



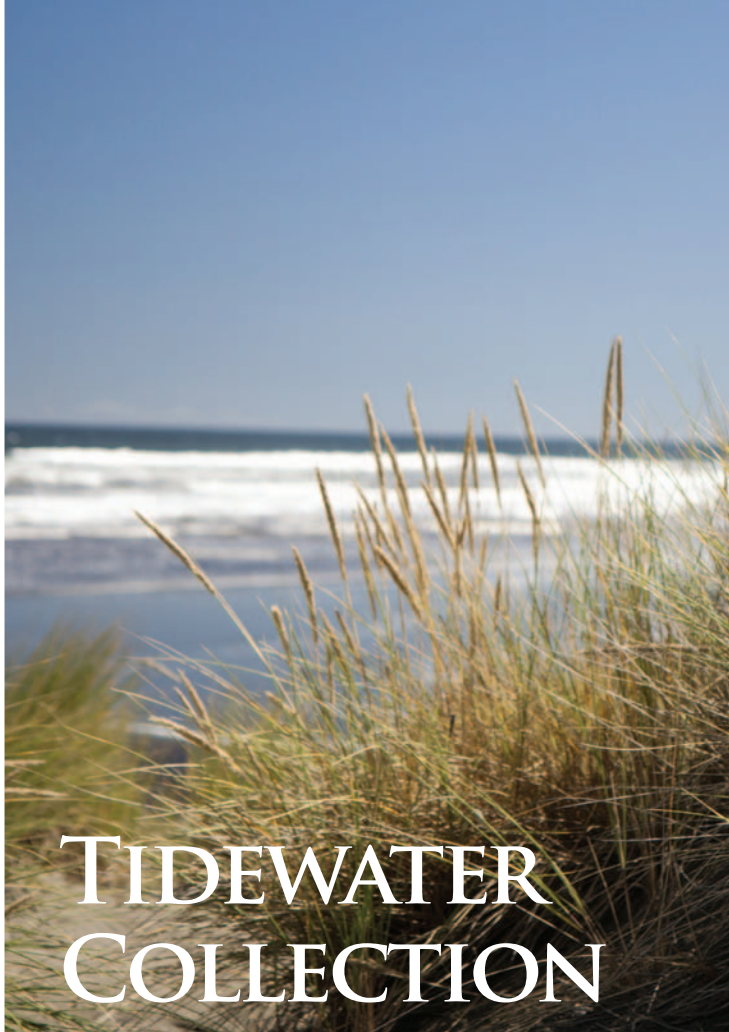
Sumter

Available in Quarter Sawn White Oak.



Ticonderoga

Available in Quarter Sawn White Oak.



TIDEWATER COLLECTION

Our **Tidewater Collection** includes unique and various hand-applied antiqued and/or distressed finishes which create a weathered look giving the appearance of a piece of old driftwood, weathered fence, or antique barn plank.



Avalon

Available in Quarter Sawn White Oak.



Cape Cod

Available in Quarter Sawn White Oak.



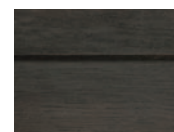
Cape May

Available in Quarter Sawn White Oak.



Clearwater

Available in Quarter Sawn White Oak.



Mystic

Available in Quarter Sawn White Oak.



Montauk

Available in Quarter Sawn White Oak.



Tybee

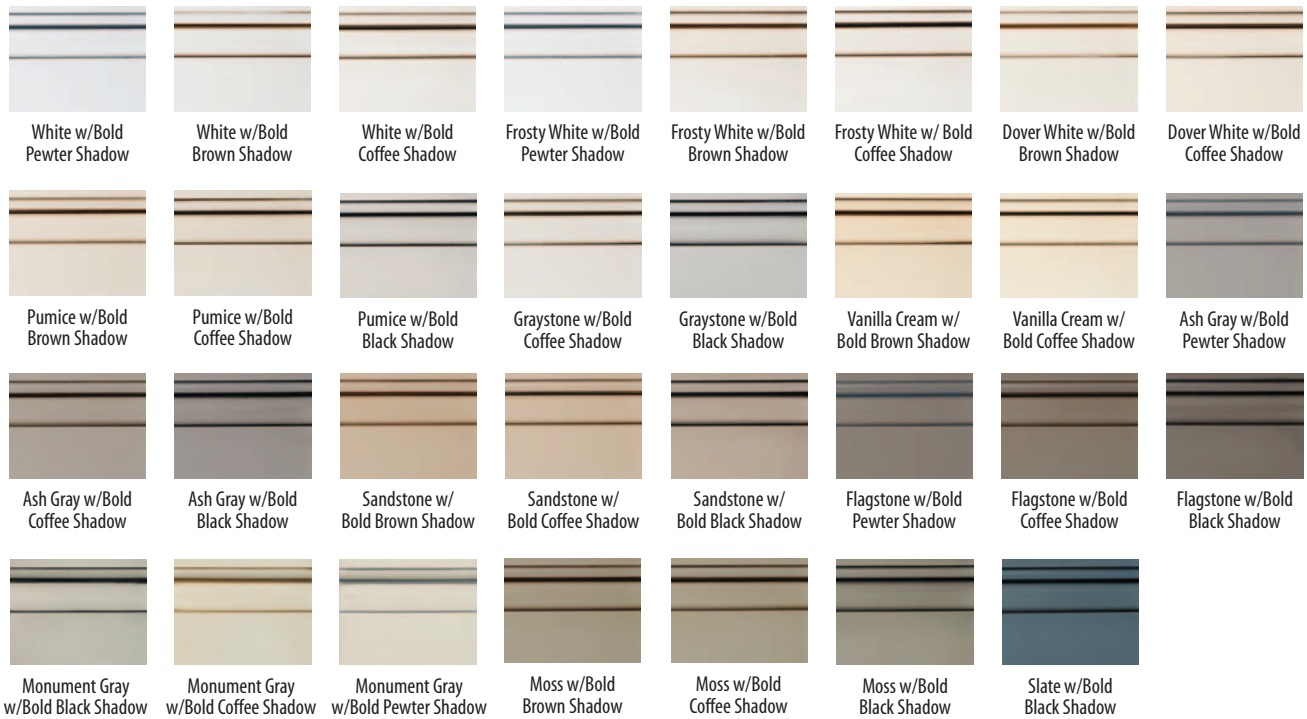
Available in Quarter Sawn White Oak.

PAINTS



All the colors of the rainbow are at your fingertips with our Sherwin-Williams Color Fan Deck.

PAINT WITH GLAZE

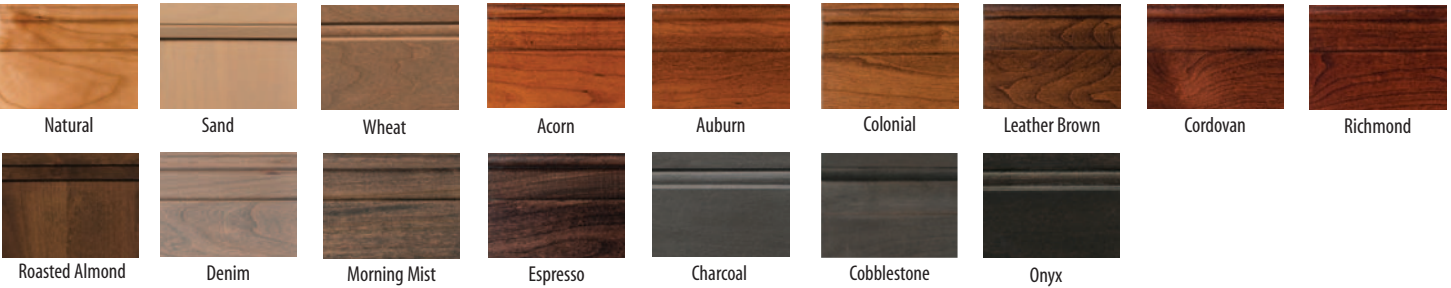


STAINS

MAPLE



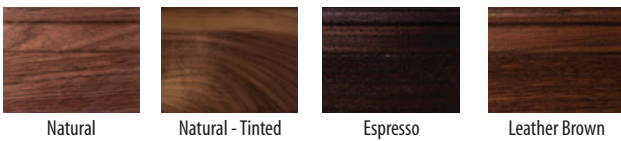
CHERRY/ALDER (also available in Rustic Cherry and Knotty Alder)



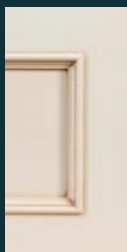
QTR SAWN WHITE OAK



WALNUT



GLAZING PACKAGES



Lite Shadow

The finish look is achieved by applying glaze to the entire base color, wiping off by hand, with the flat surfaces wiped clean and careful attention paid to the minimal hang-up remaining in the corners and profiles of the door and drawer.



Bold Shadow

Another glaze-enhancing option, this rich look is achieved by applying glaze to the entire base finish, carefully wiping off by hand with detailed attention to achieving a heavier, bolder, well-defined glaze of the straight lines and profiles of the door and drawer.



Lite Brushed Shadow

The third of the glaze options, this subtle look combines the technique of Lite Shadow along with a dry brushing of glaze on the flat surfaces of the frame and panel of the door and drawer.



Bold Brushed Shadow

The last of the glaze options, this classy look combines the technique of Bold Shadow along with a dry brushing of glaze on the flat surfaces of the frame and panel of the door and drawer.

DISTRESSING PACKAGES

All distressing prior to finishing



Worn Package

This subtle time-worn look is achieved by lightly distressing the wood with a random assortment of the following:

- Worm holes
- Claw hammer dents
- Dings/Dents



Weathered Package

Along with the characteristics of the WORN package, this also includes the following randomly applied features:

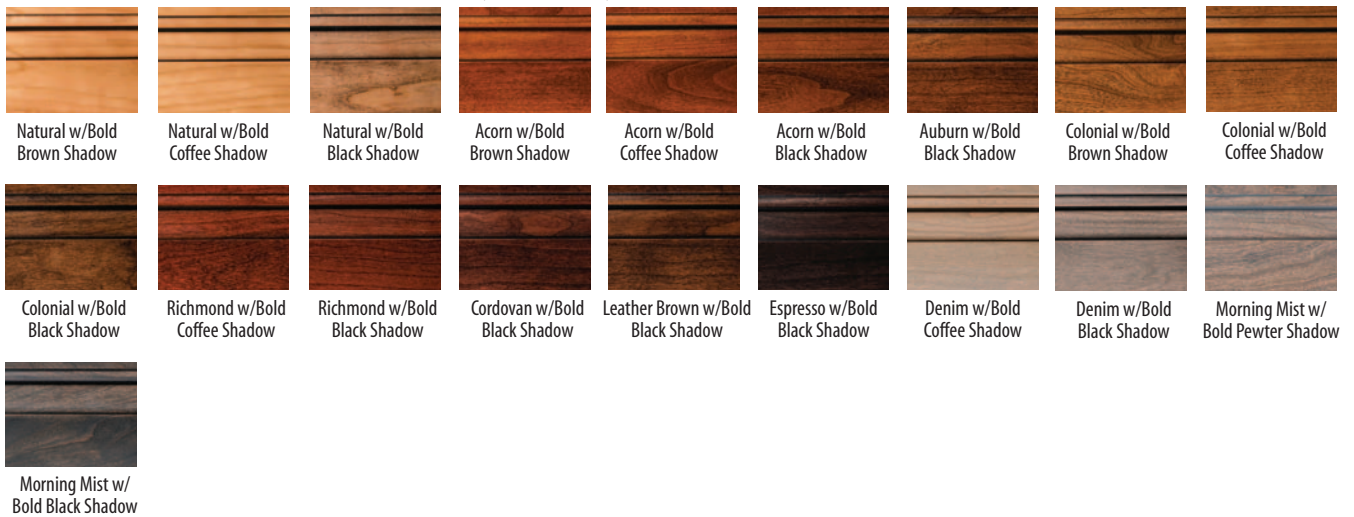
- Rasping/Gouging
- Knife Splits
- Rounded/Sanded corners and profiles
- Small chisel marks

STAIN WITH GLAZE

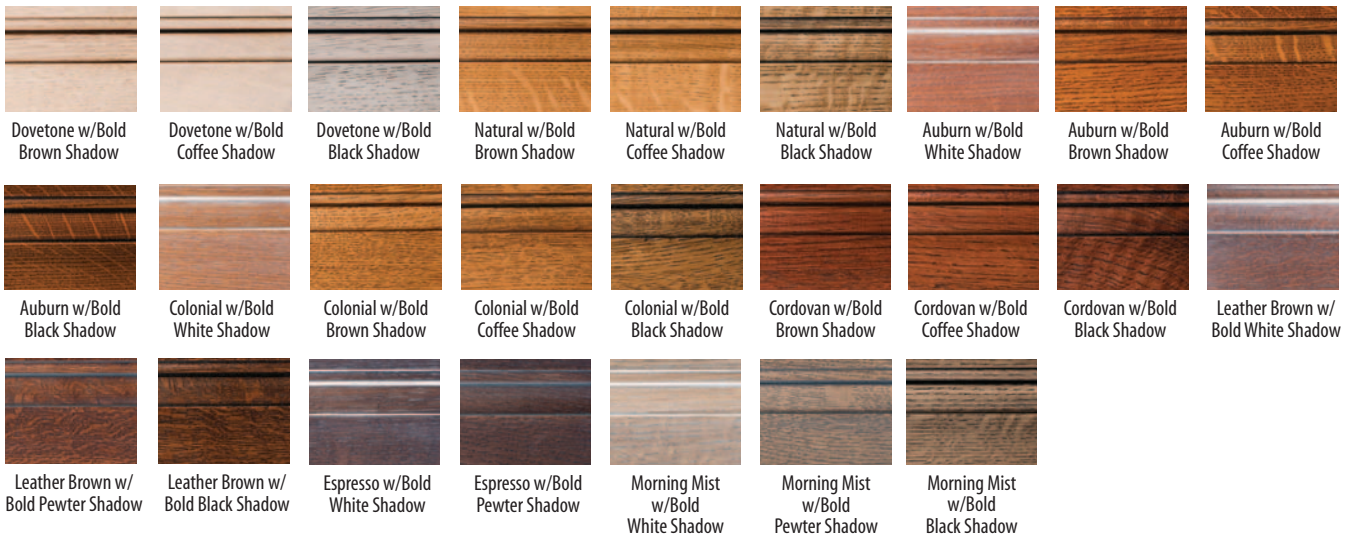
MAPLE



CHERRY/ALDER (also available in Rustic Cherry and Knotty Alder)



QTR SAWN WHITE OAK



LANDMARK

FEATURES

CABINET CONSTRUCTION

Landmark cabinets are strong as well as beautiful. Perfect for the homeowner looking for value and flexibility.

Landmark offers a variety of door styles, wood species, finishes, and accessories to fit your budget and desires.



- 1/2" plywood cabinet box construction
- 3/4" plywood adjustable shelves with bottom support shelf clips
- Full-width 3" wide top stretchers for added strength and stability
- 5/8" solid wood dovetail drawer boxes w/ eased top edges and undermount soft-close drawer guides
- Clear-finished natural veneer interiors and bottoms
- Fully concealed 6-way adjustable hinges with soft-close action
- Customizable sizes in 1/16" increments



TEDD WOOD
FINE CABINETRY

Essential Cabinetry
GROUP

WWW.TEDDWOOD.COM