

REVERSIBLE PSYCHIATRIC CONDITIONS

Sabina Kuczera MS4

Ross University School of Medicine

THANK YOU

- This PowerPoint is for educational purposes and is not made to diagnose any conditions
- Talk to your doctor for more information



INTRO

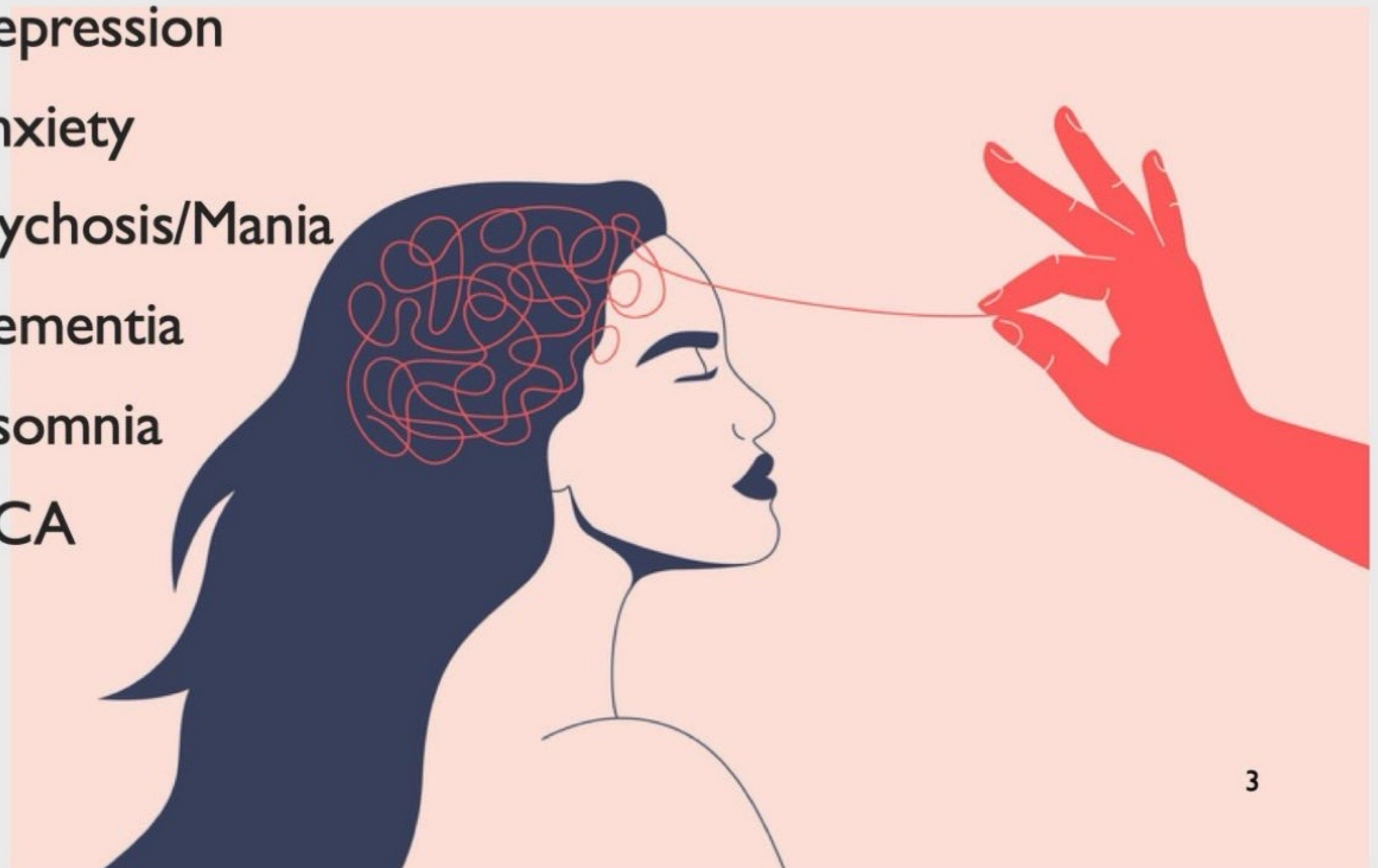
- Many psychiatric conditions can manifest due to medical reasons such as vitamin deficiencies or toxicities
- It is important to rule out these reasons before diagnosing a psychiatric condition
- This is why lab work is essential when seeing a psychiatrist

CMP
CBC
THYROID PANEL
METAL LEVELS



DISCUSSION

- Some examples of psychiatric diagnoses caused by reversible conditions that need to be ruled out in the initial workup include:
 - Depression
 - Anxiety
 - Psychosis/Mania
 - Dementia
 - Insomnia
 - PICA





- Anemia
 - Low Hemoglobin, Hematocrit or iron
 - Vitamin deficiency - Vitamin B9 or B12
- Uremia - Kidney disease
- Hypothyroidism



ANXIETY/PANIC ATTACKS

- Hyperthyroidism
- Uremia – kidney disease
- Severe dehydration
- High hemoglobin
- Hyperkalemia



PSYCHOSIS & MANIA

- Hypercalcemia
 - Hyperparathyroidism, CKD
- Hyperthyroidism
- Heavy metal poisoning – lead, mercury, cobalamin, manganese, and arsenic



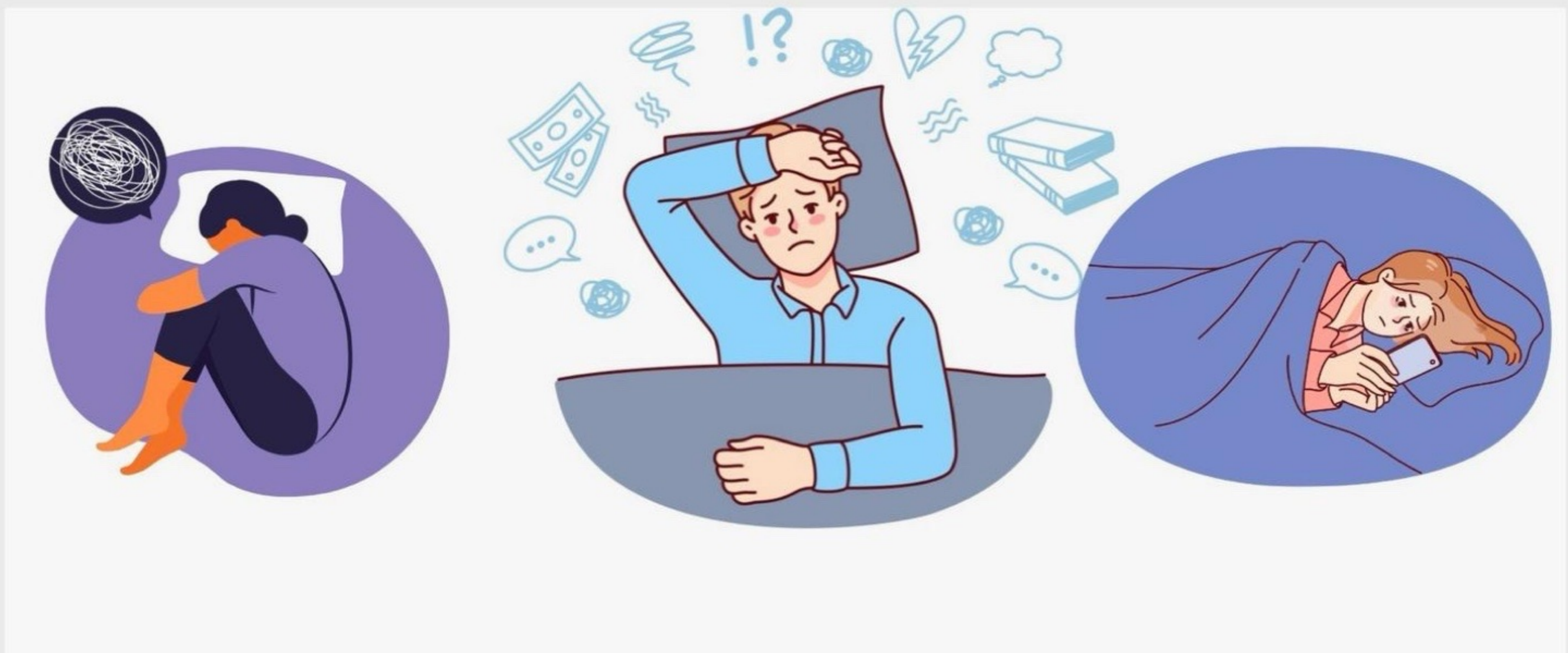


PSEUDO DEMENTIA

- Vitamin B12 deficiency
- Vitamin B1 deficiency
- Hyponatremia
- Hyperammonemia
- Uremia
- Hyperglycemia and hypoglycemia
- Heavy metal poisoning – lead, mercury, cobalamin, manganese, and arsenic
- Hypercapnia

INSOMNIA

- Hyperthyroidism
- Iron deficiency anemia



EATING DISORDER **PICA**

Pica is the craving or consumption of objects that are not normally intended to be consumed.

- Iron deficiency anemia

