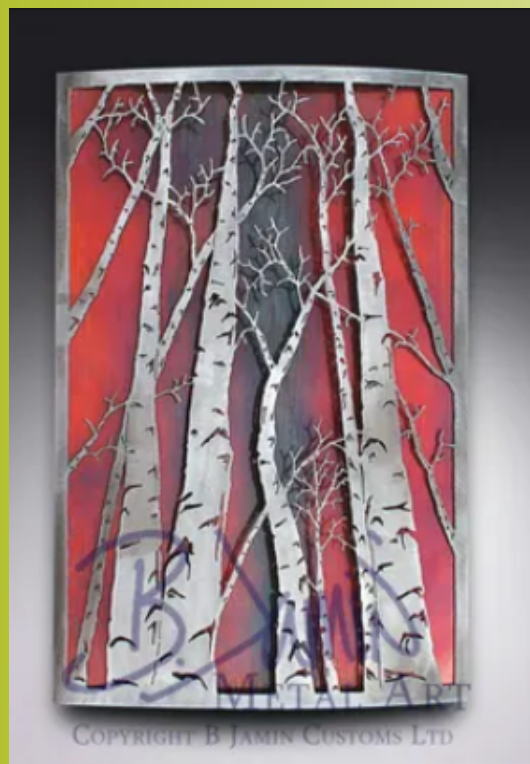


# Showcasing Ben Jamin Stielow-Metal Art-fine arts

PORTFOLIO



Many of Ben Stielow's pieces are directly influenced by Colorado hikes in nature. He loves recreating that feeling you get with large aspen trees towering above you through his work.

Ben's metal wall art is colored still strictly with Patina, or chemical reaction. Constructed of steel, each piece is 'flash' plated with copper, and then darkened/colored by continuing that reaction; building layer on layer from that original copper patina.



<https://bjamincustoms.com>

