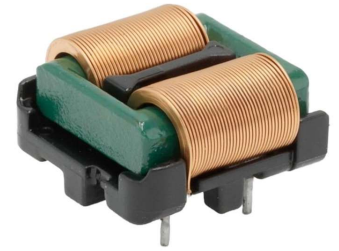


## Common Mode Power Line Choke AWCDMC-H Series

### Product features

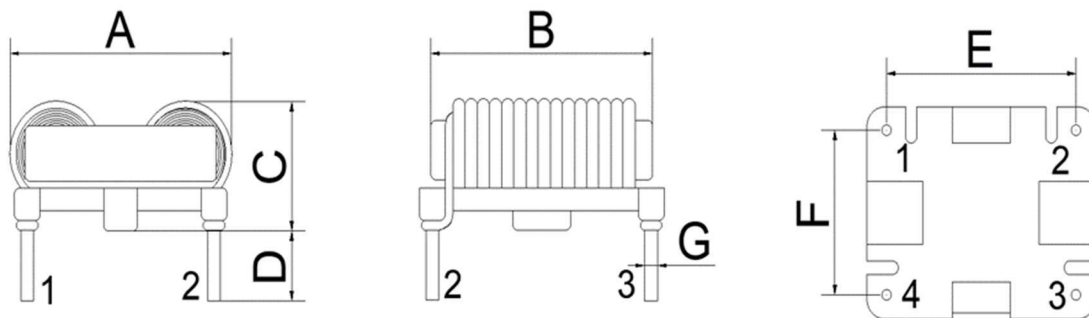
- Combines common-mode and differential-mode filtering
- Effective high-frequency and low-frequency noise suppression
- Enhanced EMI reduction
- Flat wire design enhances compactness for space savings
- Cost-effective solution for power supply applications
- Customizable inductance values to meet diverse needs.



### Applications

- AC/DC converter
- High-frequency DC to DC converters
- Switching power supplies
- LED drivers

### Dimensions (mm) AWCDMC-H Series



Series	A (Max)	B (Max)	C (Max)	D (Ref)	E (Ref)	F (Ref)	G (Ref)
AWCDMC-1314H	19.0	15.0	12.5	3.5	13.0	10.0	0.7
AWCDMC-1616H	22.5	18.0	15.0	3.5	17.0	13.0	0.8
AWCDMC-2019H	25.0	22.0	15.0	3.5	17.0	15.5	0.6
AWCDMC-2321H	28.0	27.0	18.0	3.5	21.4	17.0	0.8

## Specifications AWCDMC-H Series

Part Number	Winding Inductance (Min) (mH)	Leakage Inductance ( $\mu$ H)	Rated Current(A) (Ref)	DCR (m $\Omega$ ) (Max)	Number of Windings
AWCDMC-1314H-15	15	200	1.0-1.5	250	2
AWCDMC-1314H-10	10	200	1.3-1.8	180	2
AWCDMC-1314H-6	6	150	1.5-2.0	130	2
AWCDMC-1616H-20	20	300	1.3-1.8	250	2
AWCDMC-1616H-10	10	280	1.5-2.0	160	2
AWCDMC-2019H-12	12	300	2.5-3.0	150	2
AWCDMC-2019H-7.5	7.5	280	3.5-4.5	100	2
AWCDMC-2321H-8	8	200	5.0-6.5	80	2
AWCDMC-2321H-4	4	100	10.0-11.0	50	2

### Electrical

- Rated Voltage: AC/DC250
- Irated: ( $\Delta T = 40$  °C)
- Hi-pot test: AC 1500V 5mA 2Sec 50Hz/60Hz (Winding to Winding)
- Current ranges from 1.0A to 11.0A
- Common mode Inductance range from 4mH to 20mH.
- Leakage Inductance range from 100 $\mu$ H to 300 $\mu$ H.
- 100% Lead (Pb)-Free and RoHS compliant.
- Operating temperature -40+110°C