

Historic Lobby Elevation Design

Elevation Design
Rachel Estafanous
528 Design Studio I, MFA1
Fall 2025

Table of Contents

- **01** Project Brief
3

- **02** Design Process
4

- **03** Mood Board
5

- **04** Sketches
6-11

- **05** Color Testing
12

- **06** Perspective &
Ceiling
13-14

- **07** Design Concept
15

- **08** Final Designs
16-18

Project 1D

Elevation Design

Project Brief

Project Brief

Completed as part of a studio assignment at the New York School of Interior Design, this project explored how the elements of design including line, shape, form, color, texture, pattern, and light could be applied to create two adjacent elevations forming the corner of a space. The study focused on how these elements influenced composition, rhythm, and balance to define spatial character and visual flow.

The exercise investigated variation through two distinct approaches. One elevation emphasized movement and rhythm, while the other conveyed balance and symmetrical organization. Together, they expressed how contrast and harmony could coexist as the design transitioned around the corner of a space.

Materials

The compositions were created using alcohol markers, wax, foam core board, trace paper, sketch pencils, sketch paper, foil paper, glossy modge podge, a mini candle, and a stick for wax distribution.

Objectives

The goal of this project is to develop an understanding of how design elements can be used to communicate different visual ideas within a unified spatial composition. Through experimentation with materials, layering, and composition, the project demonstrates how movement or rhythm and balance or symmetrical order can work together to create cohesion and contrast within an interior space.

Project 1D

Elevation Design

Design Process

Design Process

I began this project by creating a mood board to guide the development of my concept. I experimented with many patterns until I found shapes that felt visually compelling. Once I decided on the forms I wanted to use, I traced them repeatedly in multiple variations until I established a rhythm that felt right.

Early on, I knew I wanted to explore stained glass designs. As I continued sketching and refining ideas, I decided that the stained glass would define my movement wall. After finalizing a concept for that pattern, I began designing the opposite wall with the intention of creating a sense of balance.

For the balance wall, I focused on symmetry to make the overall composition feel cohesive since the movement wall was more dynamic. I added additional references to my mood board to refine the concept.

Once I determined the design approach for both walls, I began to explore color. My palette choices were guided by the alcohol markers I had available at my desk, which helped set the tone for the final presentation.

Inspirations

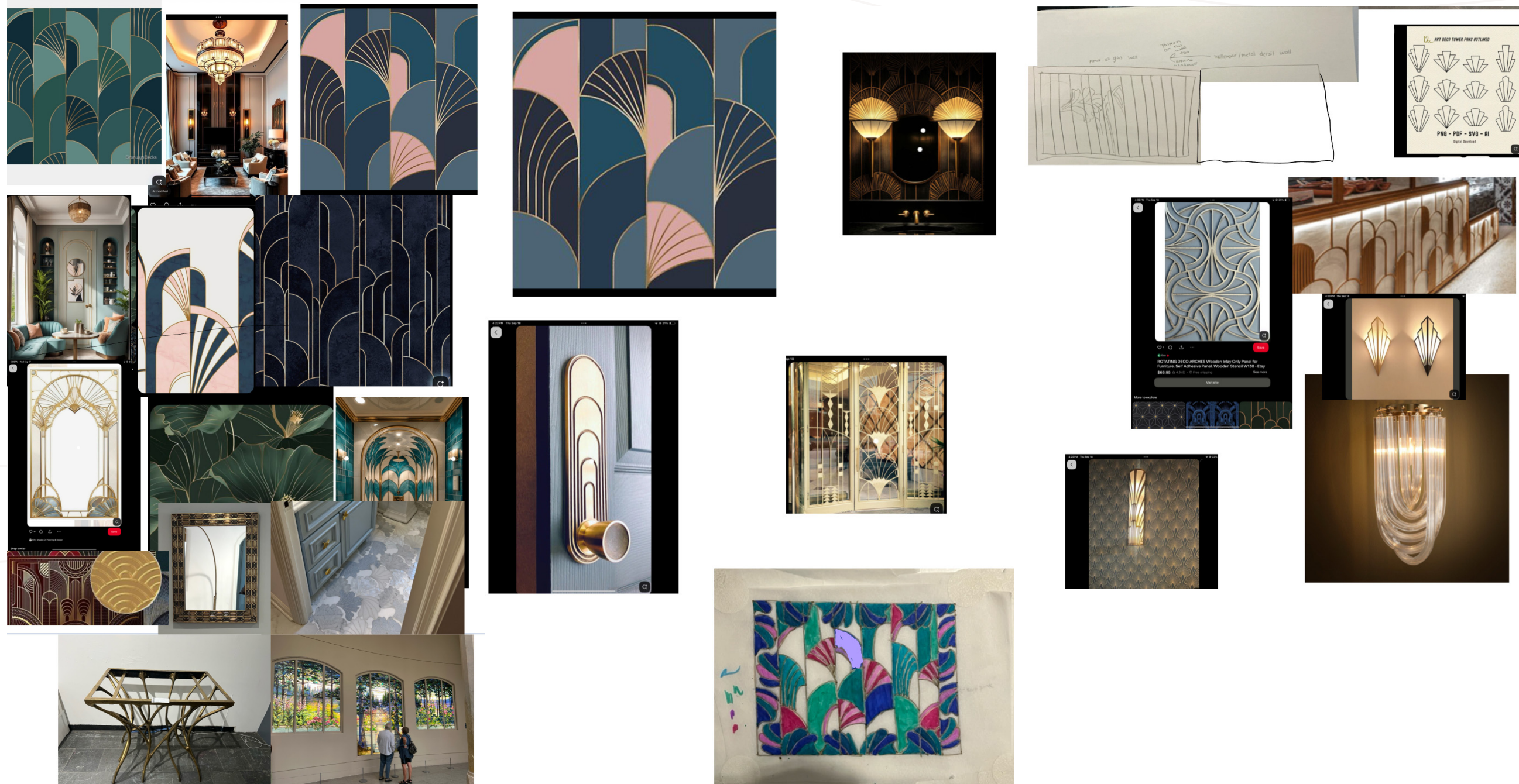
For this project, I drew inspiration from a range of sources, but my main influence came from the Art Deco era. I gathered images from both real life and online references (Pinterest) to inform the design. One of the key patterns I used came from the floor tile in my powder room at home, while another originated from a wood inlay stencil image I discovered during my research.

Art Deco has always been one of my favorite styles, and I wanted to reinterpret its geometric rhythm and decorative quality in a personal way through this project.

Project 1D

Elevation Design

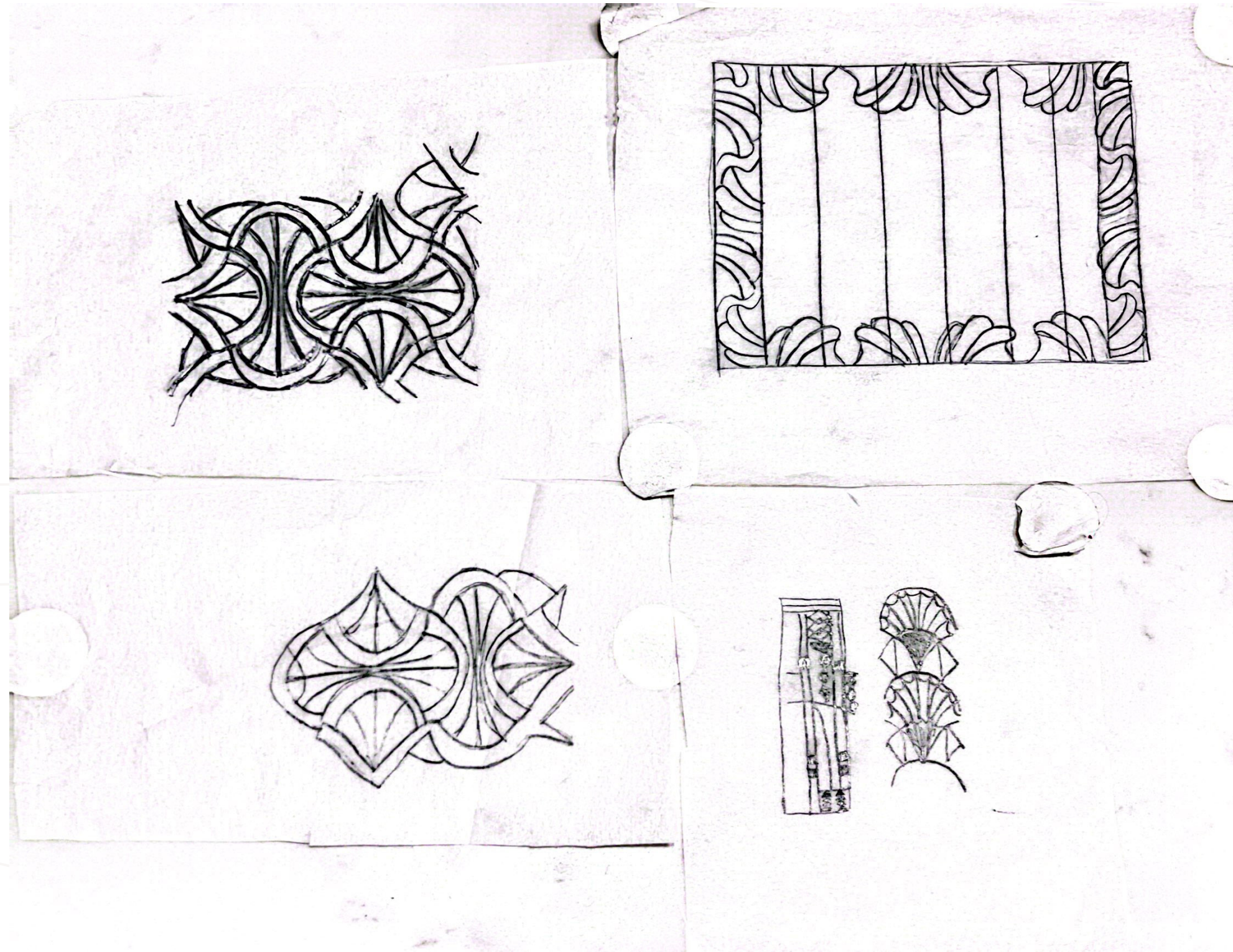
Mood Board



Project 1D

Elevation Design

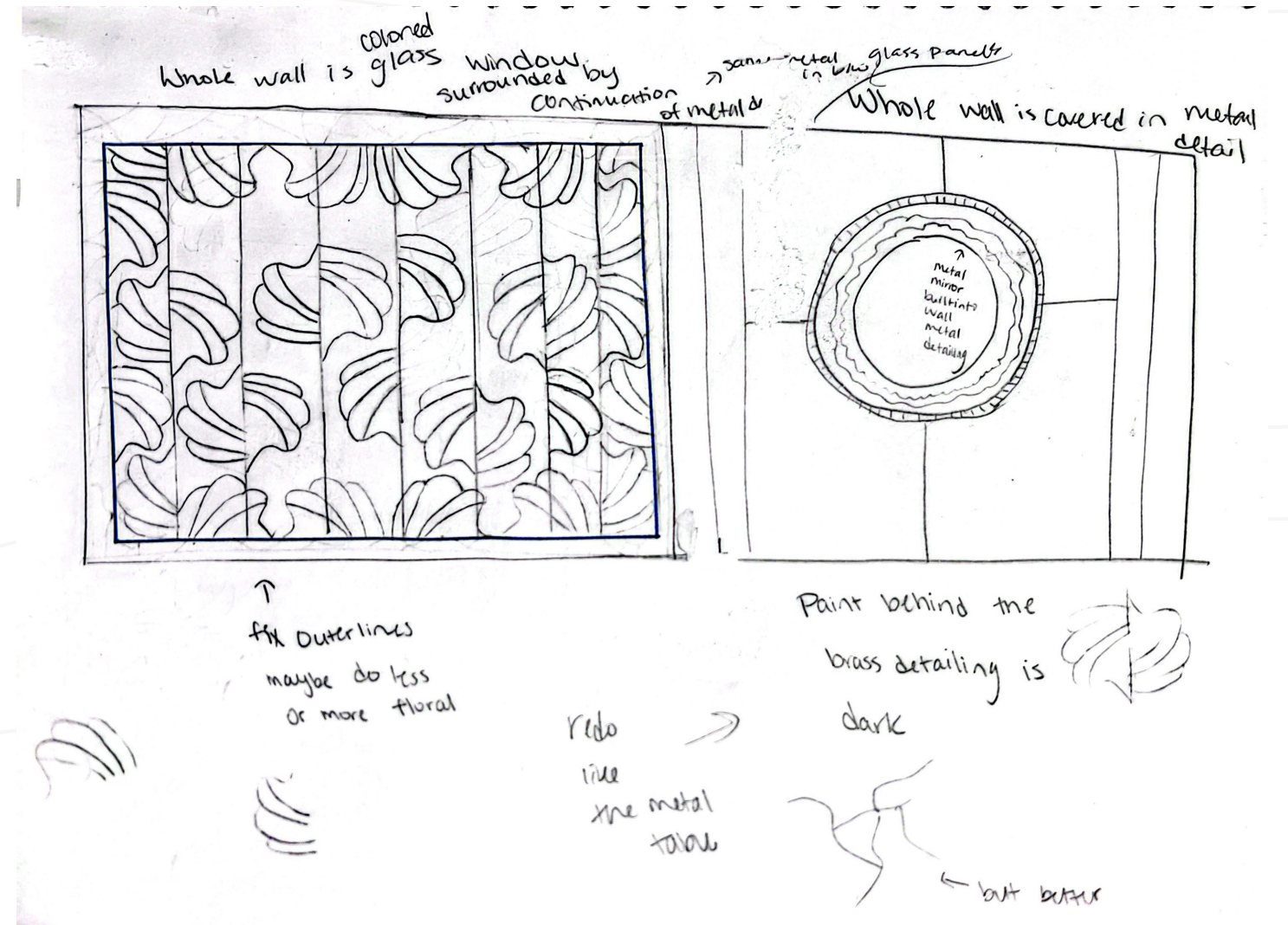
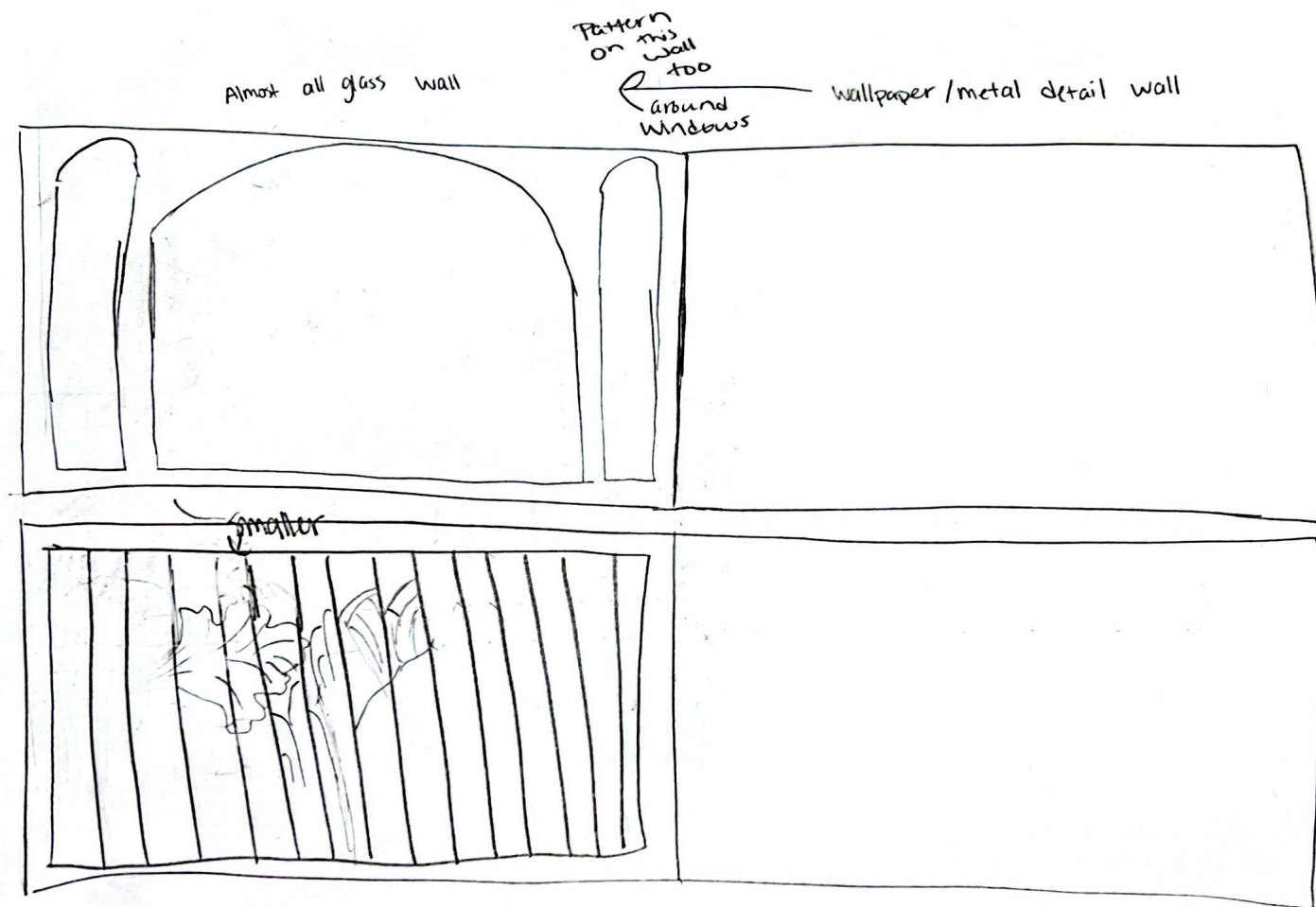
Sketches



Project 1D

Elevation Design

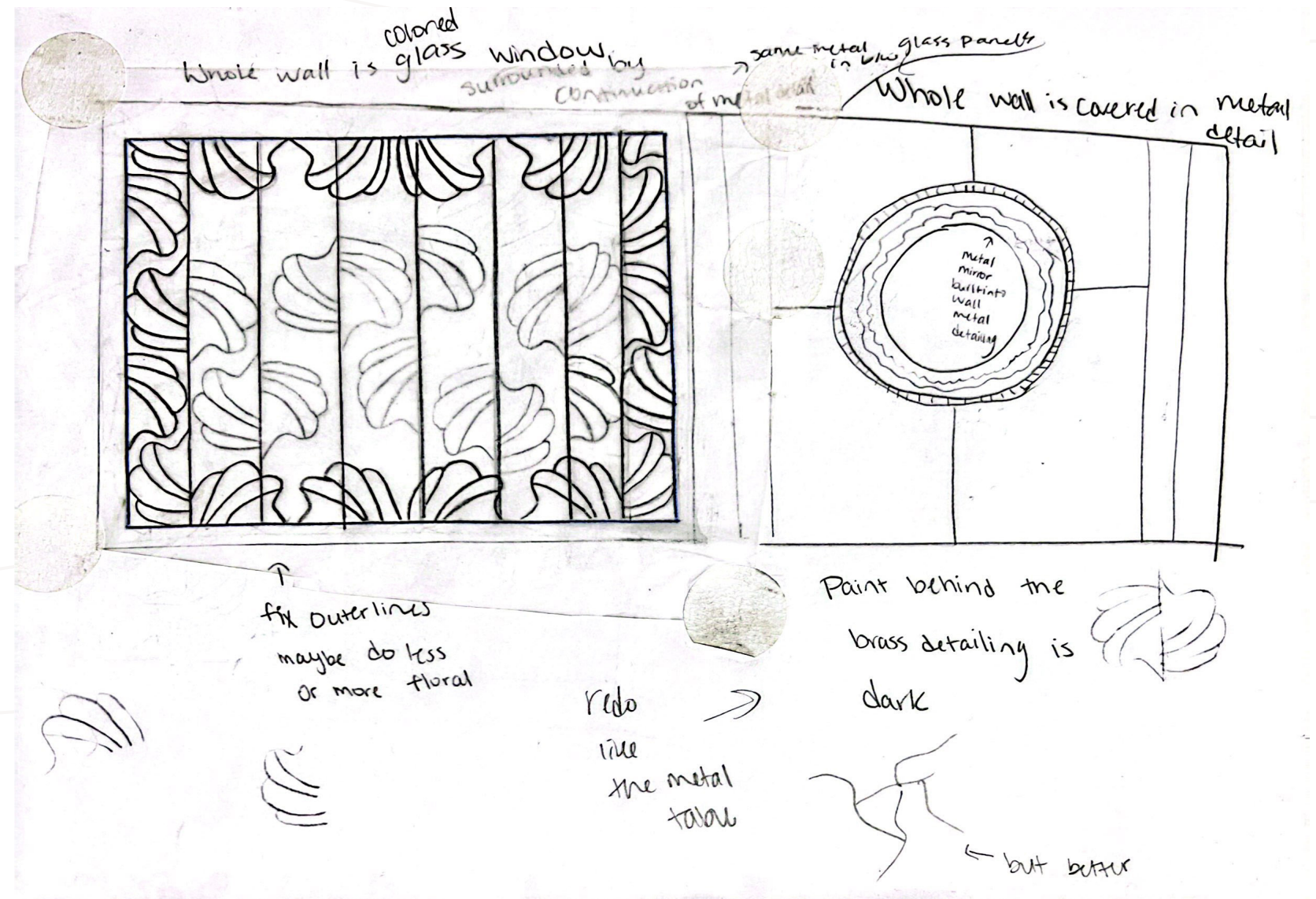
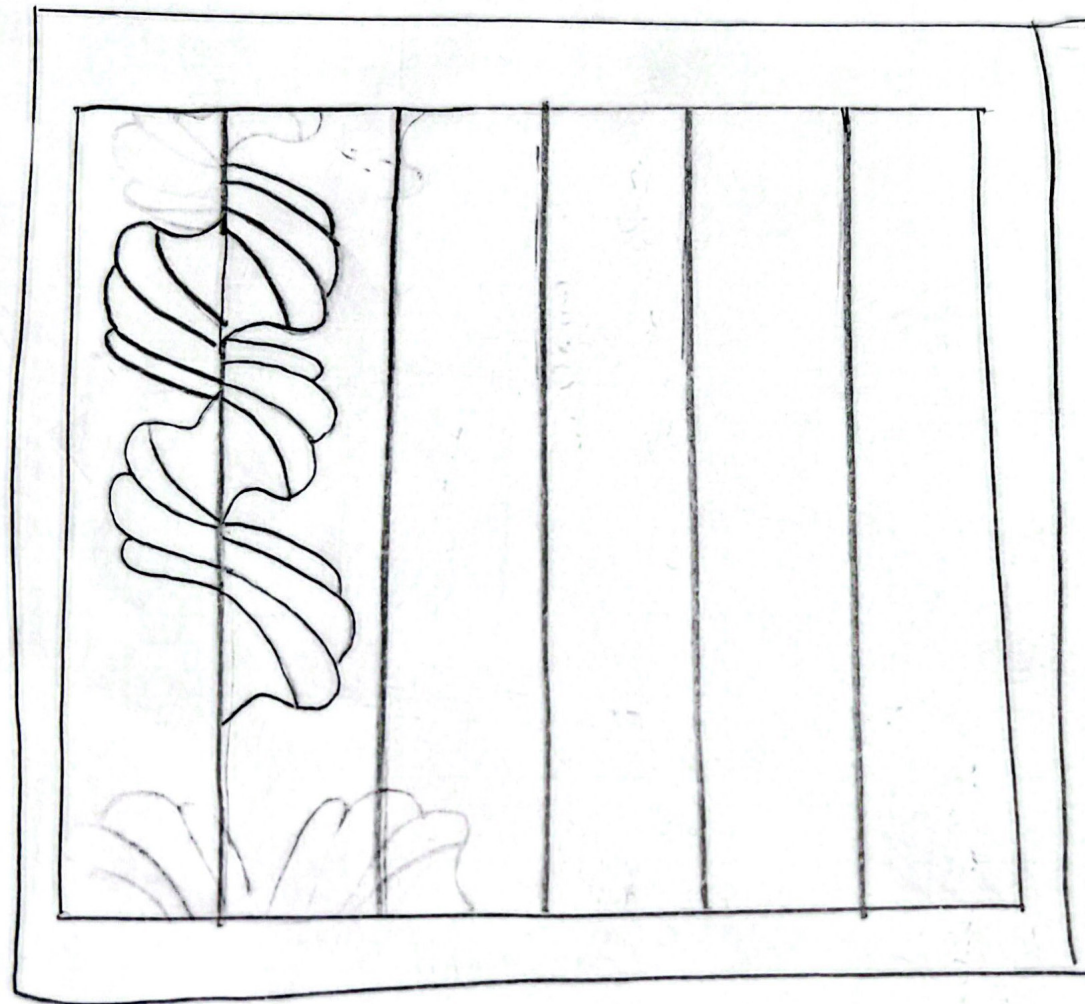
Sketches



Project 1D

Elevation Design

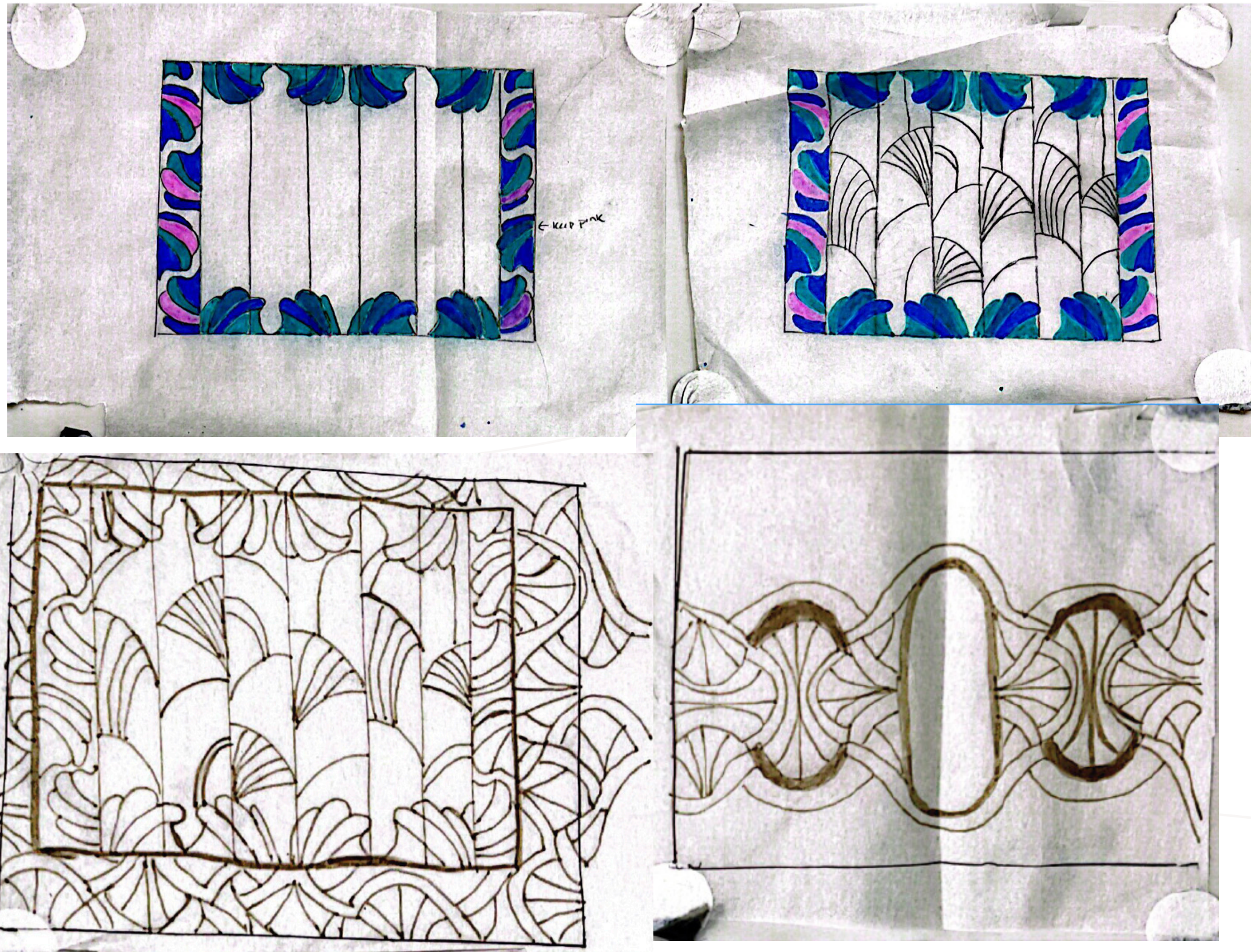
Sketches



Project 1D

Elevation Design

Sketches



Project 1D

Elevation Design

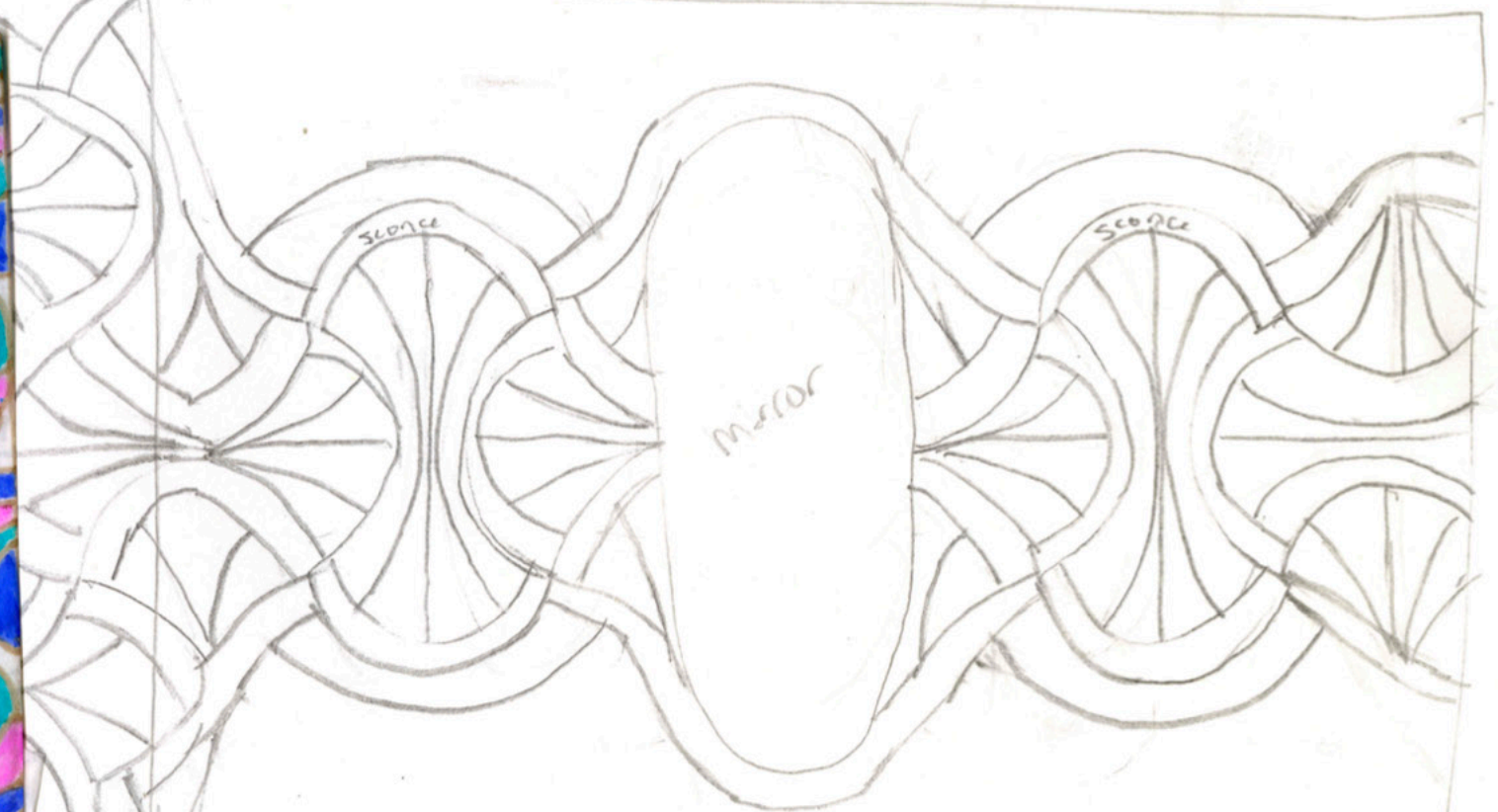
Sketches

brass detailing everywhere
stained glass window
prob less bold colors

mirror & scones
centered

color drench

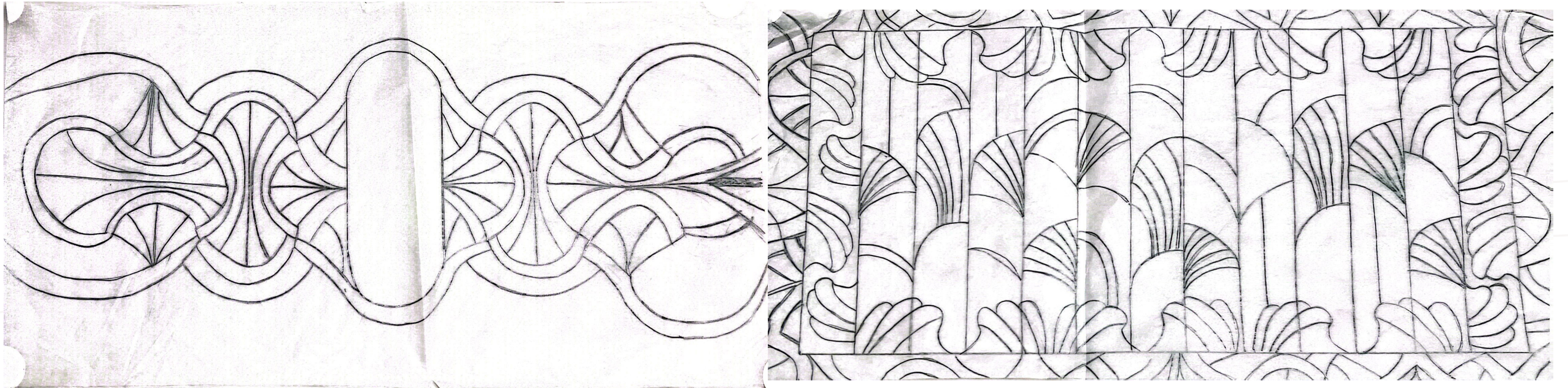
continue pattern
on ceiling



Project 1D

Elevation Design

Sketches



Project 1D

Elevation Design

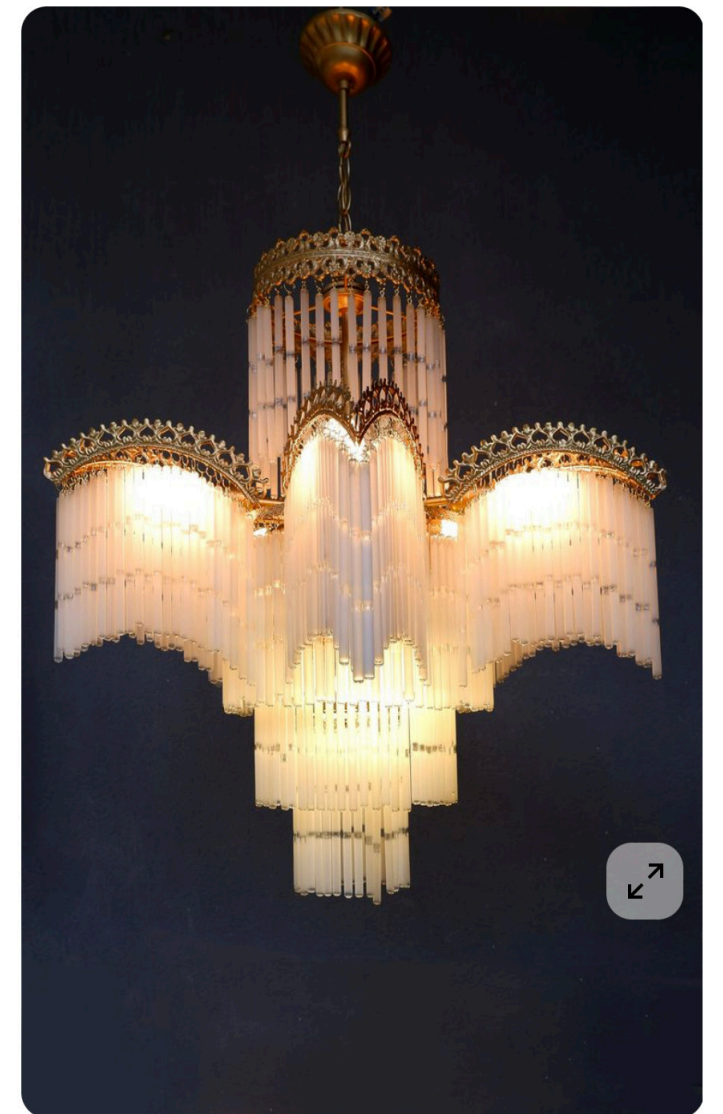
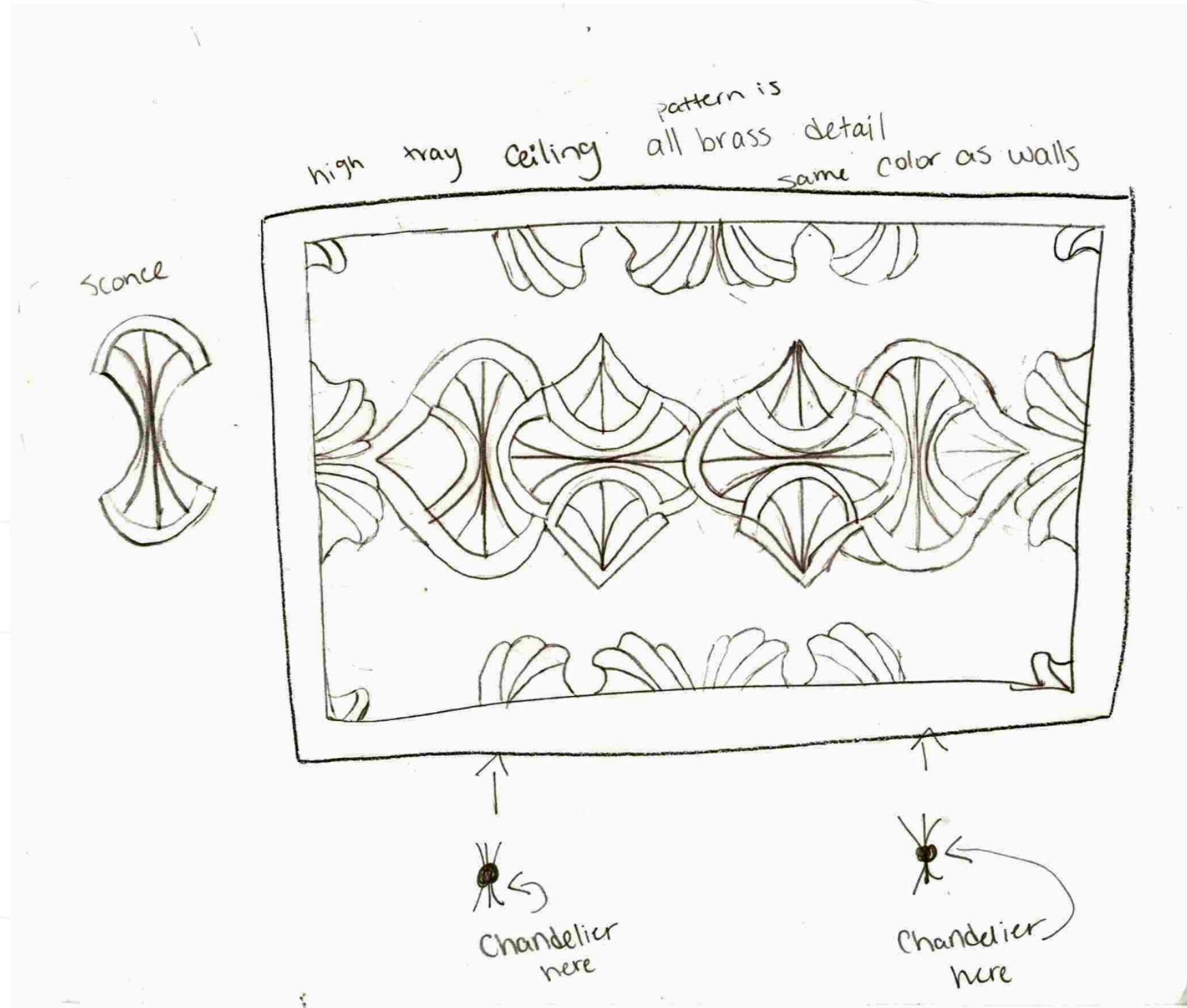
Stained Glass Color Testing



Project 1D

Elevation Design

Ceiling Sketch

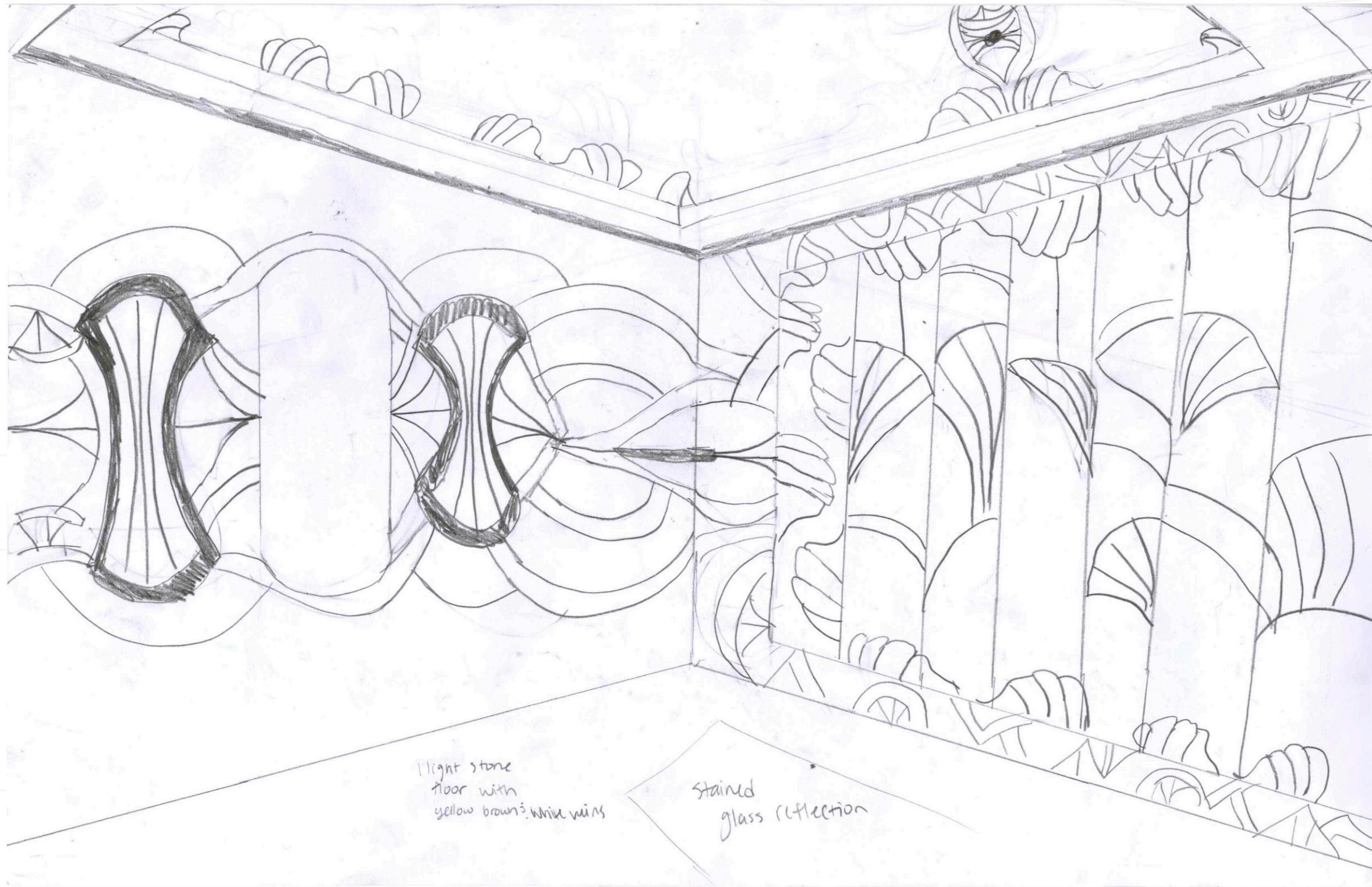


Chandeliers

Project 1D

Elevation Design

Perspective Sketch



Project 1D

Elevation Design

Design Concept

Concept

The design represents the lobby of a historic building that combines modern detailing with classical influence. Brass accents highlight the walls and ceiling, enriching the space with a color-drenched finish. A large stained-glass window defines the movement wall, while a mirror and two sconces create balance on the opposite wall. The flooring is marble with warm yellow-brown veining that adds depth and continuity throughout the space. The ceiling design merges the motifs from both walls, uniting the composition into one cohesive visual statement.

Material Samples

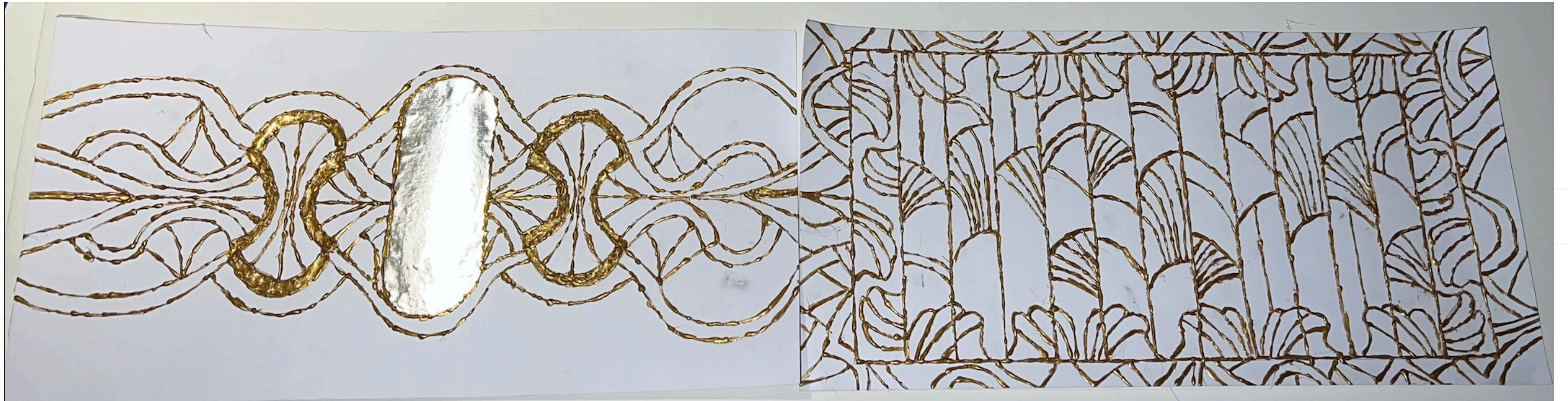
The materials shown reflect the selections that would be used in this theoretical project. The large sample on the left represents the metal used for the brass detailing on the walls and ceiling. The top right sample is a natural stone chosen for the flooring. The bottom right sample is the paint color selected for the ceiling and walls. Together, these materials express the intended palette and texture of the space.



Project 1D

Elevation Design

Final Design Wax Stage



Project 1D

Elevation Design

Final Design Model



Project 1D

Elevation Design

Final Design Scans

