



RACHEL ESTAFANOUS

INTERIOR DESIGN
PORTFOLIO

📍 NYC | CLEVELAND

rachel@estafanousdesigns.com | estafanousdesigns.com



ABOUT

Rachel Estafanous specializes in hospitality and commercial interiors with a select portfolio of high-end residential projects. Every project begins with a single question: what does the client actually need? Before selecting a single material or sketching a floor plan, she listens. She evaluates how people use a space, identifies what isn't performing, and builds a design strategy around solving it.

She creates spaces that embody quiet luxury through balance, craftsmanship, and restraint. Each design is guided by a dedication to timeless elegance, thoughtful detail, and refined composition, but it's always grounded in solving real problems for real people.



01

HI HOSTEL NYC

Bar Lounge

New York, NY

Hospitality

1000 sqft

CONCEPT + SITE

The client needed to turn an underused communal room into a bar lounge that would give guests a reason to stay in for the evening. The existing space felt institutional. Large murals, fluorescent lighting, and mismatched furniture offered nothing that made new arrivals want to linger or connect.

The challenge was creating a warm, social atmosphere on a limited budget without major structural changes. The building is a designated historical landmark, so the concept centered on a modern reinterpretation of its original character. The design needed to honor that history while supporting casual gatherings, small events, and everyday use, making the space feel like a destination rather than an afterthought.



Before



Before



Concept

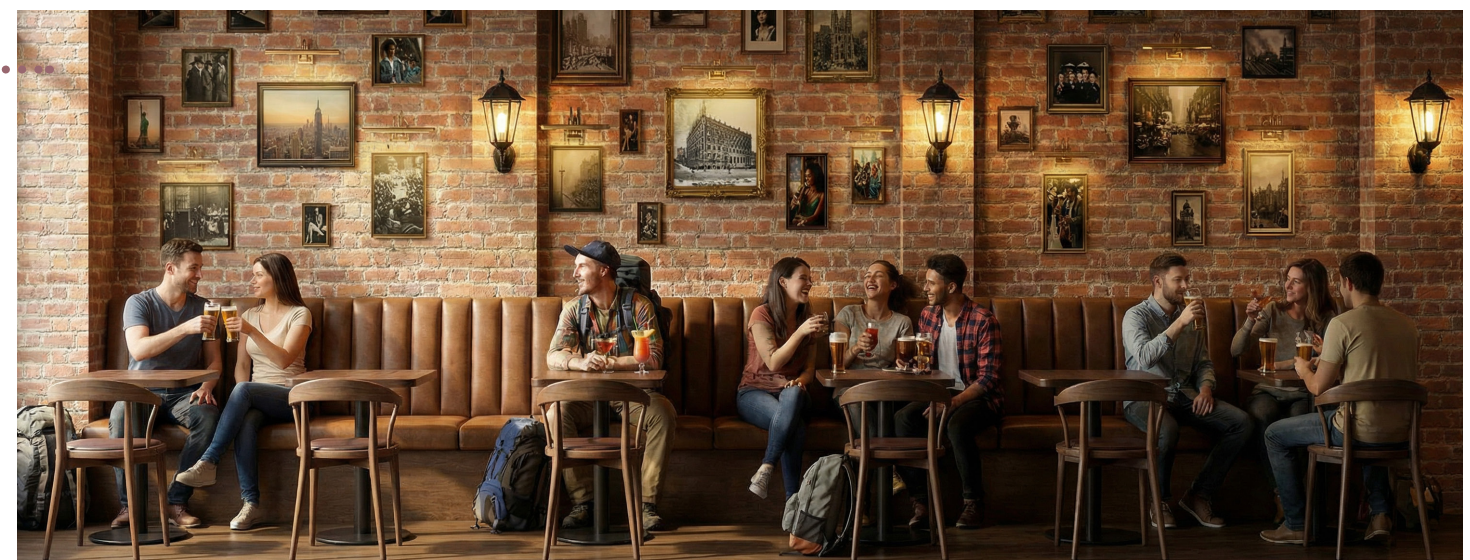
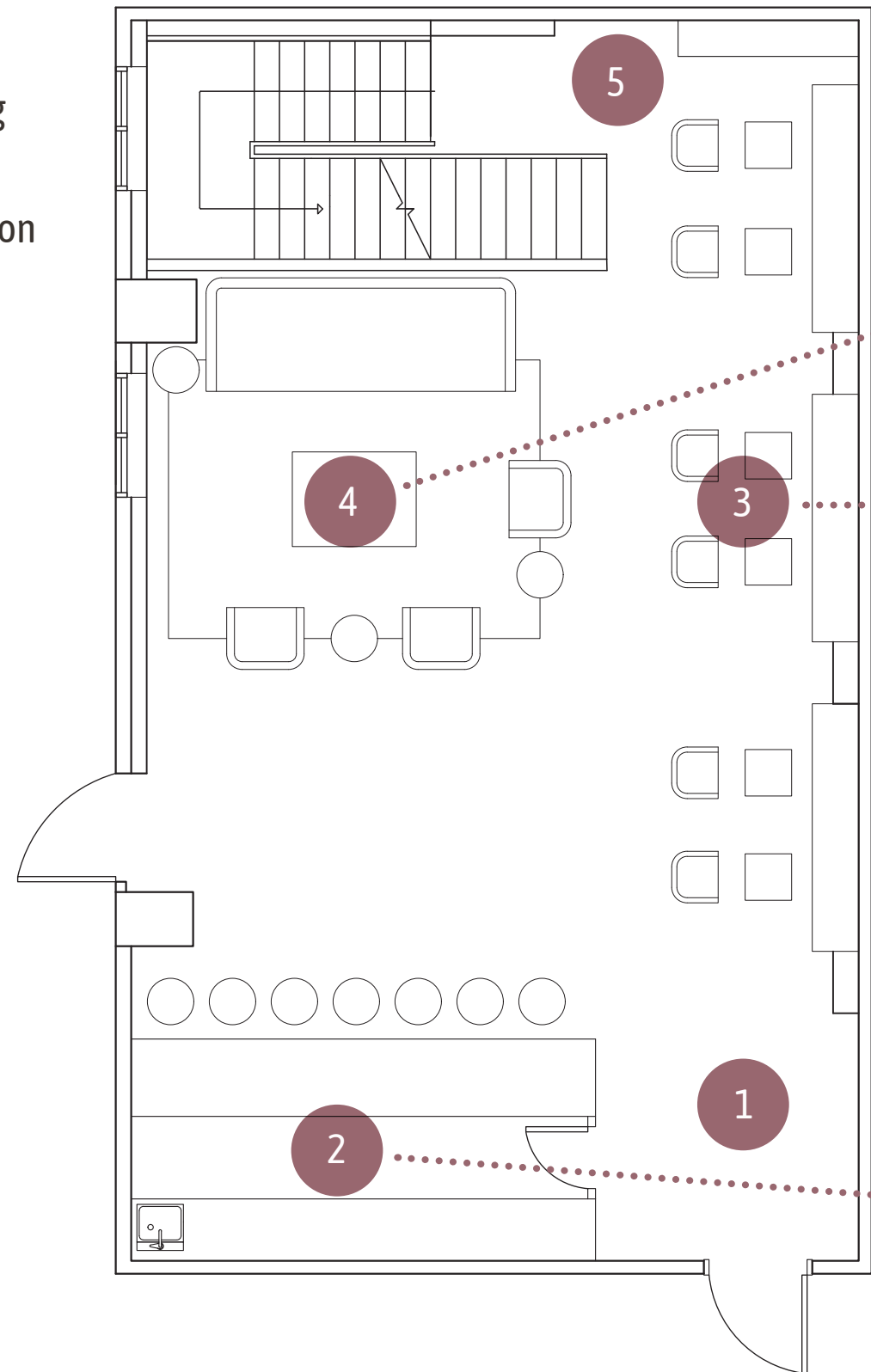


Concept

SPATIAL DESIGN

FLOOR PLAN

- 1. Reception
- 2. Bar
- 3. Bar Seating
- 4. Lounge
- 5. Selfie Station



THE FINISHED SPACE





02

SHAKER HEIGHTS

PRIVATE RESIDENCE

Shaker Hts, OH

Luxury Residential

5000 sqft

CONCEPT + SITE

Full interior and exterior renovation of a mid-century family home in Shaker Heights. Completed in collaboration with KAS Interiors. The client wanted to modernize while retaining select existing and family furnishings. The challenge was balancing original architectural character with updated materials, spatial flow, and a refined atmosphere that felt both fresh and familiar.

Rachel led the interior material selections and spatial planning for every room, specifying custom millwork for the great room cabinet and built in wine storage. A subtle arch motif was carried throughout the home, tying new elements back to the original architecture. She coordinated finishes across the kitchen, laundry, and bathrooms to create a cohesive palette



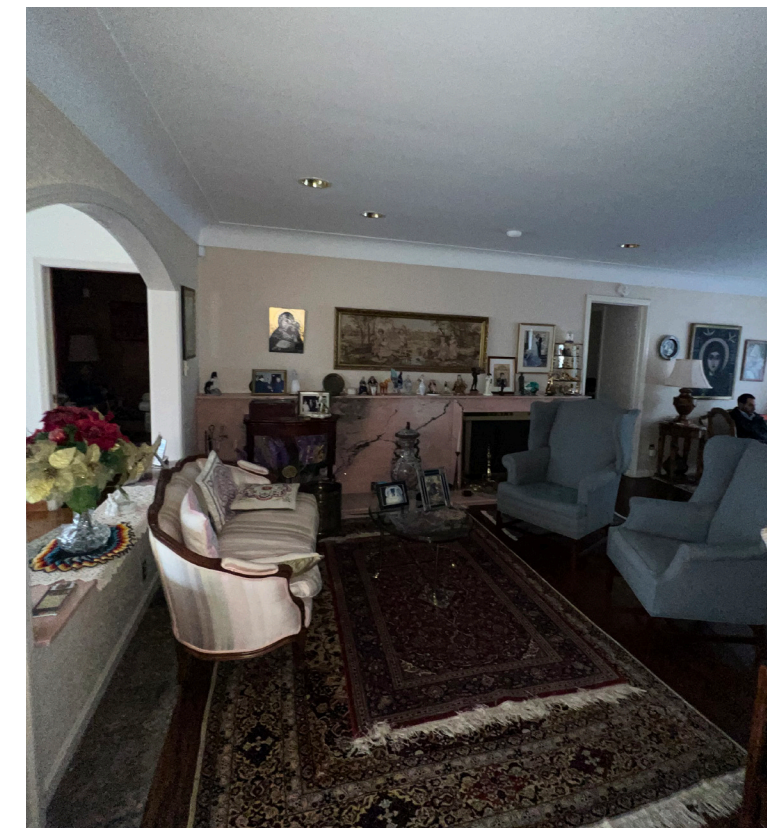
Before



Before



Before



Before

THE COMPLETED HOME

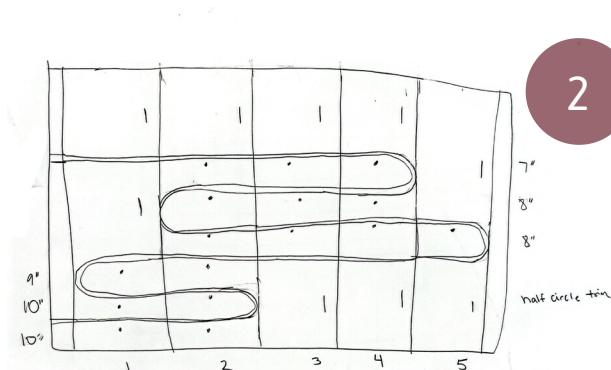
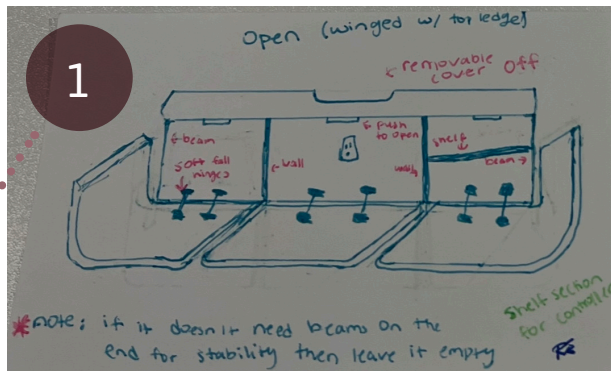


03

FURNITURE

CUSTOM DETAILS

1. The client's husband needed a place to store gaming consoles, controllers, and cables that wouldn't turn the great room into a tech graveyard. This wall-mounted white oak cabinet uses a winged door system that folds open to reveal organized compartments with built-in cable management.



Winged Video Game Cabinet | White Oak

2. The clients needed accessible bedroom storage that wouldn't feel clinical or out of place in a warm contemporary interior. This walnut cabinet features a serpentine face with gently curving vertical channels that create visual depth while keeping the profile approachable.



Serpentine Cabinet | Walnut



04

Evergreen

Senior Living Community

New York, NY

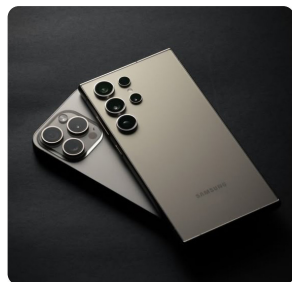
Senior Living

1100 sqft

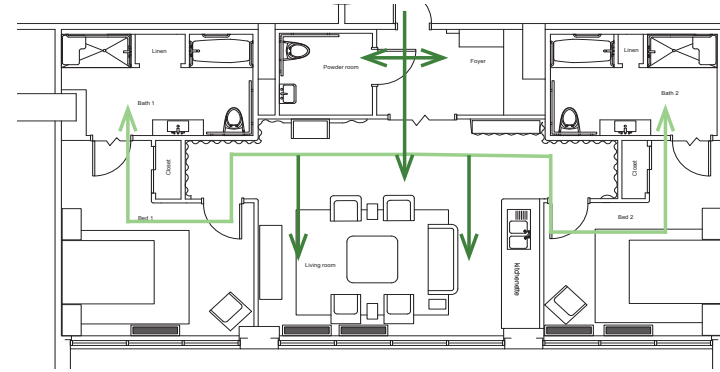
CONCEPT

Most senior living spaces are designed around limitations. Evergreen was designed around the way its residents actually want to live. The clients are seniors aged 65 to 80+ who chose co-living out of a desire for connection, shared experience, and independence. They are curious, socially active, and unwilling to disappear quietly into old age.

Rooted in biophilic principles and the form of the ginkgo leaf, the design quietly bridges nature and technology. Rounded rectangular forms found throughout the plan, furniture, and ceiling layout echo the devices residents carry daily, while the foyer lighting cove subtly references a familiar camera cluster. Supportive features are woven into the architecture, from wayfinding handrails that double as lit design elements to cork and linoleum flooring selected for slip resistance and joint relief.

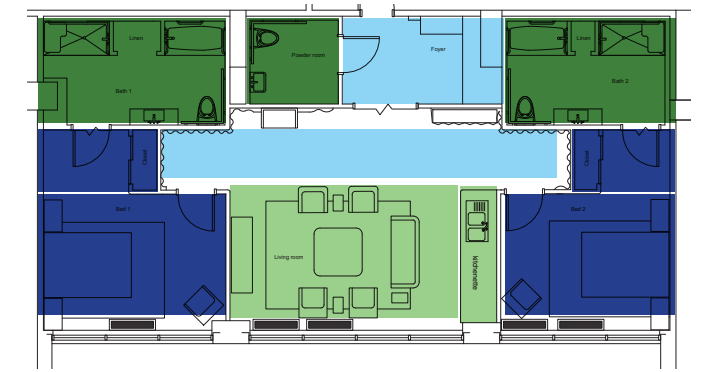


Diagrams



Circulation

Key

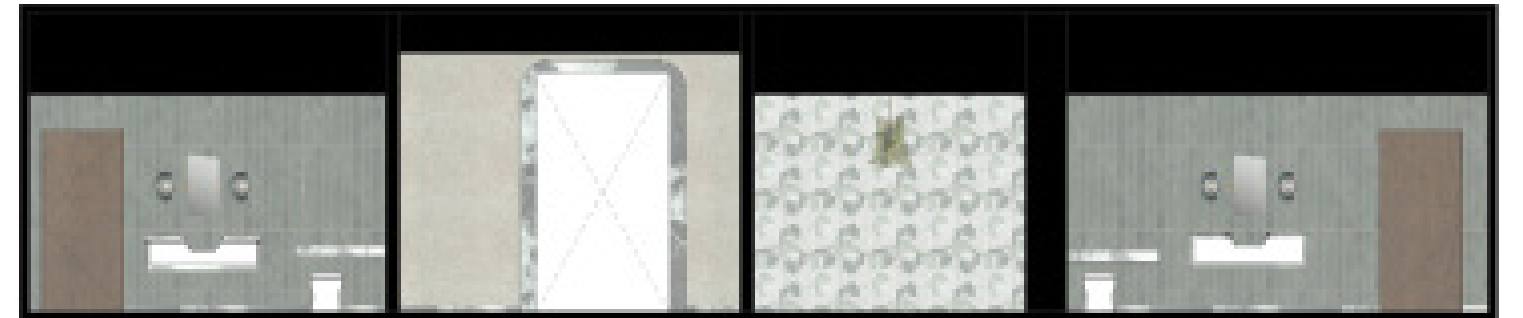


Blocking

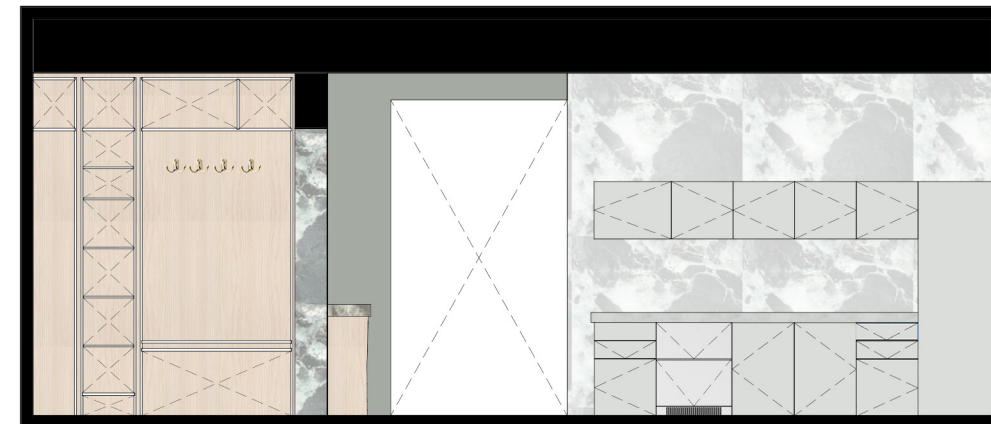
Key



Sections



East Section

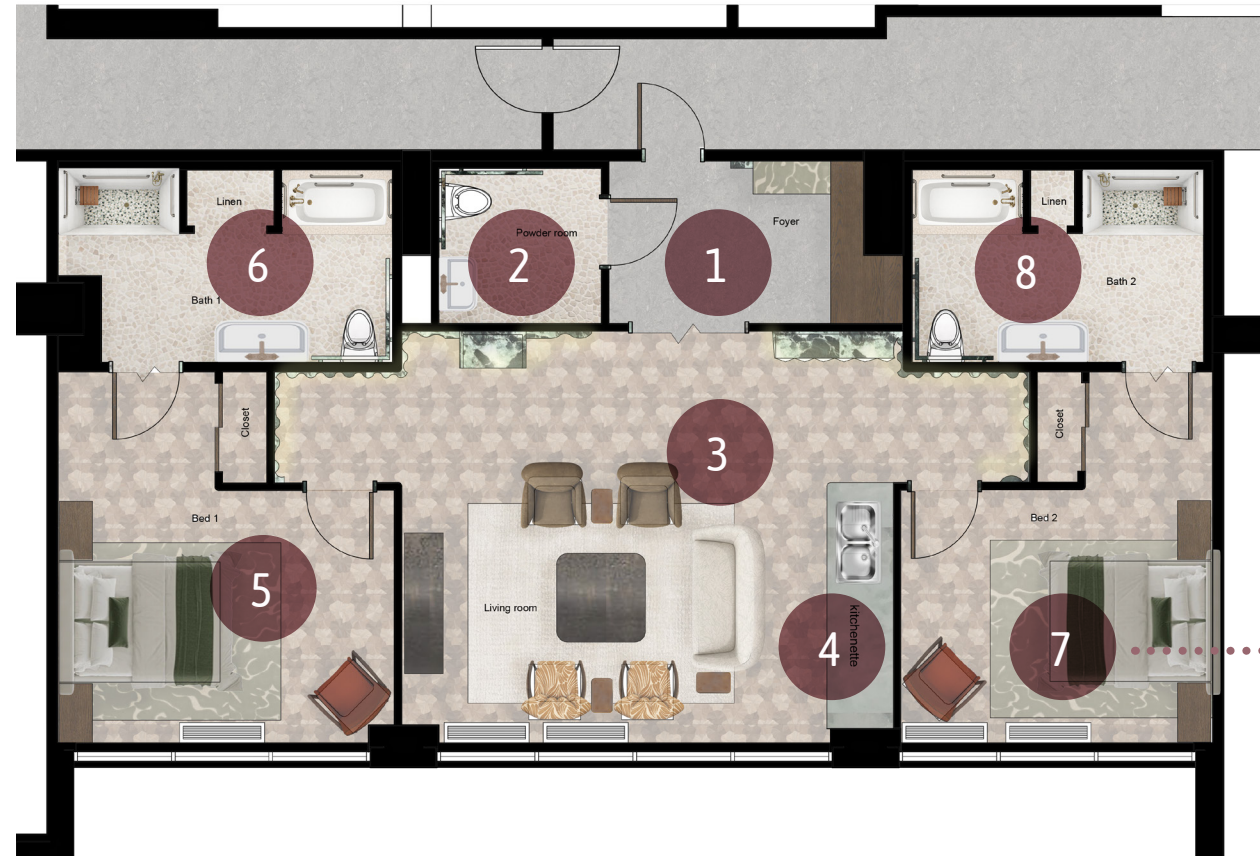


North Section

SPATIAL DESIGN

FLOOR PLAN

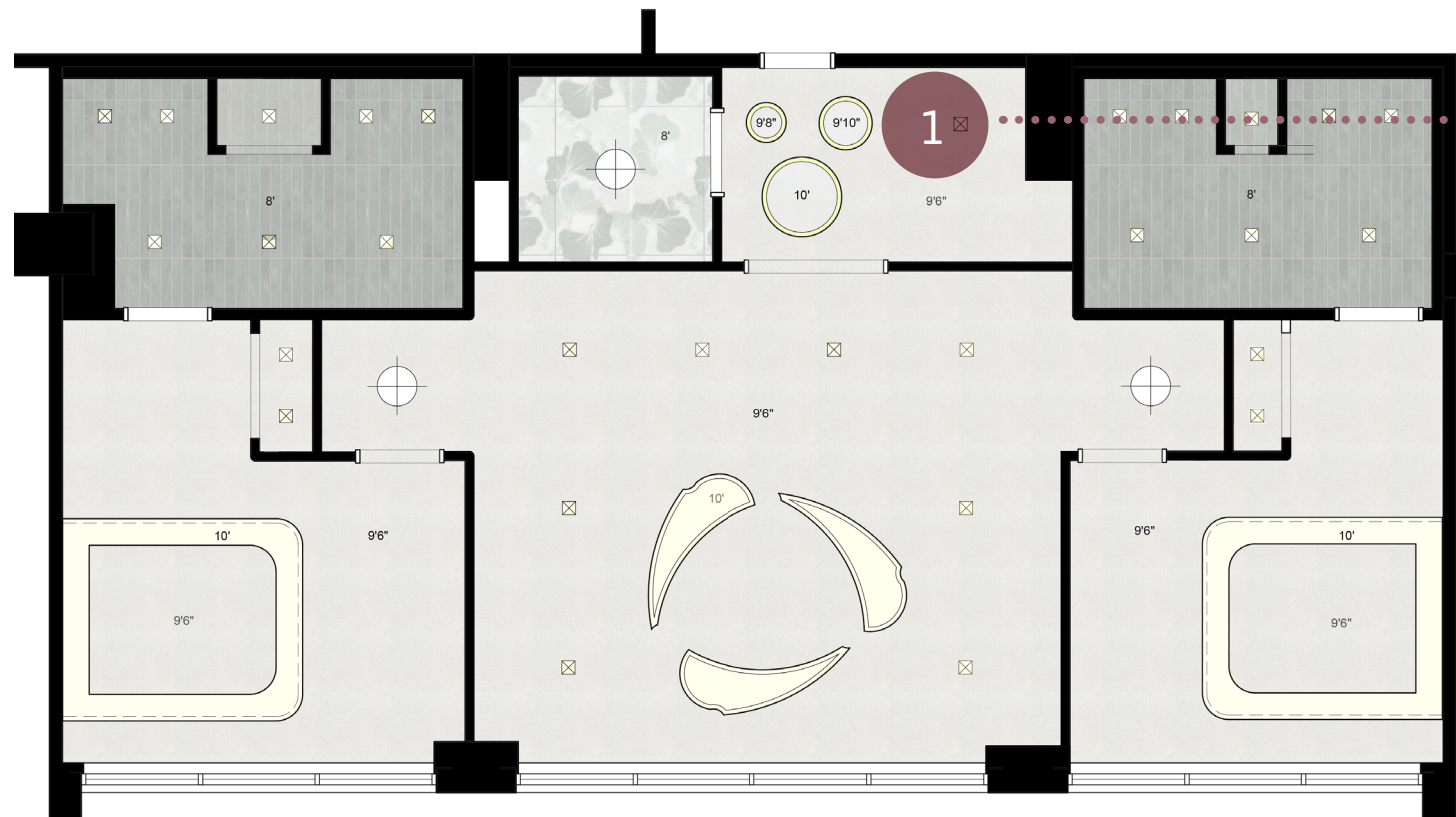
- 1. Foyer
- 2. Powder Room
- 3. Living Room
- 4. Kitchenette
- 5. Bedroom 1
- 6. Bathroom 1
- 7. Bedroom 2
- 8. Bathroom 2



RCP

Legend

- Tape Light
- ⊕ Downlights
- ⊗ Recessed Lights



LIVING ROOM

AXONOMETRIC



Wayfinding Handrails

integrated underlit handrails subtly integrated for support, balance, and easy navigation.



Cork Flooring

soft, slip-resistant surface that reduces joint impact.



Senior Living Furniture Collections

supportive seating with proper height and armrests for ease of movement.



Fenabel-Glasglow Chair



Charter-Lounge Chair + Sofa

THANK YOU

rachel@estafanousdesigns.com

estafanousdesigns.com

216-712-5544

