



# CATALYST GROUP

## 2020 CANADIAN STOCK COLLECTION







Champion



Timberlea



Timberlea



Timberlea



Champion



Next Level



Next Level



Champion



Timberlea

# 2020 CANADIAN STOCK COLLECTION

## TABLE OF CONTENTS

### TIMBERLEA

Timberlea Introduction	4
Timberlea Tops	5-10
Timberlea Bottoms	11

### CHAMPION

Champion Introduction	12-13
Garment Dyed	14-15
Originals	16-17
Reverse Weave® Fleece	18-19
Powerblend ECO® Fleece	20-22
Youth Powerblend ECO® Fleece	23
Classic Jersey	24-25
Performance Pants	26
Double Dry® Tees	27
Fan Favourites	28
Women's Performance Essentials	29
Shorts	30-31
Outerwear	32-33
Accessories	34-35
Champion Special Order	36
Champion UltraFuse	37

### NEXT LEVEL APPAREL

Next Level Introduction	38
Ideal Collection	39
Festival Collection	40-41
Fine Jersey	42-43
CVC	44-45
Tri-Blend	46-47
Mock Twist Jersey	48
PCH Fleece	48
Denim Fleece	49
Next Level Special Order	50-51

### ABOUT CATALYST

We Decorate!	52
Size Charts	53
Index	54
Social & Environmental Responsibility	55





# timberlea

A P P A R E L

Timberlea is inspired by our great Canadian lifestyle. Authentic, idyllic and hardworking. Timberlea has created affordable, high-quality pieces that will keep you comfortable and on-trend everywhere you go, from sharing a brew with friends at the pub, to navigating the campus labyrinth, to listening to the crackle and hiss of the campfire under a sky full of stars. Timberlea is made for life in Canada.





**New**

### T5000 - Adult Sherpa Fleece 1/4 Zip

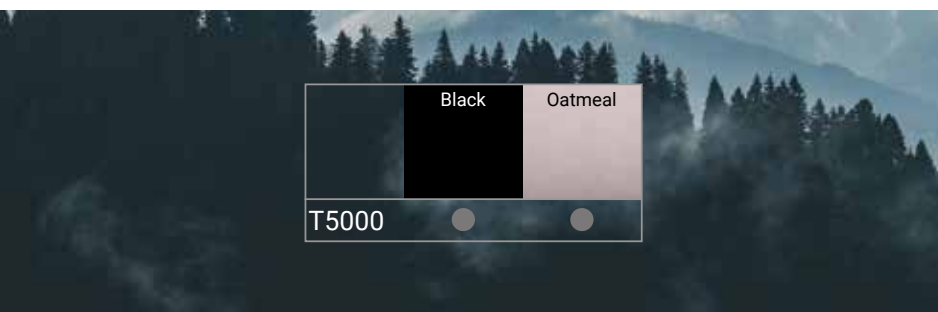
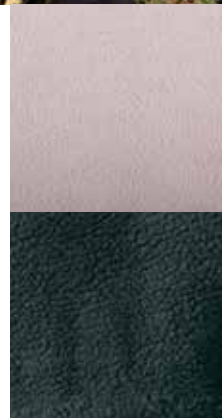
Sizes: XS - 2XL

**Fabric:** 100% Polyester

#### Description:

- Coil zipper with leatherette zipper pull
- Neck taping around neck opening for a clean finish
- Front pouch pocket
- Binding finish at cuffs and hem
- Timberlea leatherette patch on pocket

\* Coming Spring 2020







**New**

### T4000 - Adult Flannel Hoody

Sizes: XS - 2XL

#### Fabric:

- 100% Cotton Flannel
- 50% Cotton, 50% Polyester Fleece Hood

#### Description:

- Right chest pocket with button closure
- Neck taping around neck opening for a clean finish
- Timberlea leatherette patch at left hem

\* Coming Spring 2020





**New**

### T3000 - Adult Jersey Hoody

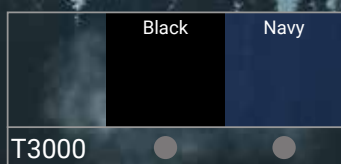
Sizes: XS-2XL

**Fabric:** 100% Cotton

#### Description:

- 1 x 1 rib with spandex at cuffs
- Contrast natural drawstring and neck tape
- Timberlea leatherette patch at left hem

\* Coming Spring 2020







### T2001 – Fleece Varsity Jacket

Sizes: XS-2XL

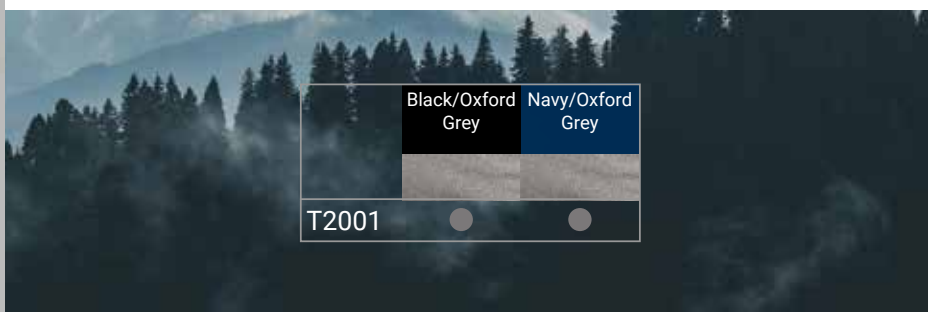
**Fabric:** 50% Cotton, 50% Polyester

**Weight:** 280gsm

#### Description:

- Silver Snaps
- 2 x 2 rib with spandex at neck, cuffs, and hem
- Welt pockets
- Neck taping from shoulder to shoulder
- Double needle coverstitch throughout
- Woven Timberlea patch on left sleeve

\* Available Now







### T2000 – Adult Fleece ¼ Zip Pullover

Sizes: XS-2XL

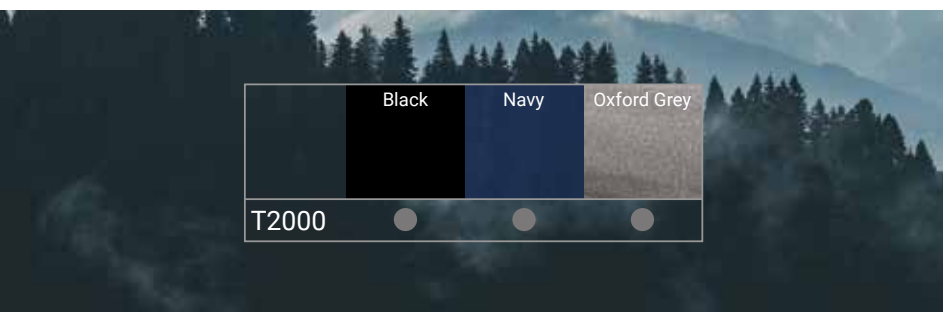
**Fabric:** 50% Cotton, 50% Polyester

**Weight:** 280gsm

#### Description:

- Antique silver metal zipper
- 1 x 1 rib with spandex at cuffs and hem
- Neck taping around neck opening for a clean finish
- Double needle coverstitch throughout
- Woven Timberlea patch on left sleeve

\*Available Now





**Youth Sizes  
Available**

**New**

#### **T2002 - Adult Fleece Colourblock Hoody**

Sizes: XS - 2XL

#### **T2002Y - Youth Fleece Colourblock Hoody**

Sizes: S - L

**Fabric:** 50% Cotton, 50% Polyester

**Weight:** 280gsm

#### **Description:**

- Jersey lined hood
- 1 x 1 rib with spandex at cuffs and hem
- Neck taping from shoulder to shoulder
- Front pouch pocket
- No drawstring on youth sizes
- Timberlea leatherette patch on pocket

\* Coming Spring 2020

Body	Black	Charcoal Melange	Military Green	Navy
Upper Sleeve	Oxford Grey	Black	Black	Oxford Grey
T2002	●	●	●	●
T2002Y	●			●





**New**

### T2003 – Adult Fleece Jogger

Sizes: XS-2XL

### T2003Y – Youth Fleece Jogger

Youth Size: S - L

**Fabric:** 50% Cotton, 50% Polyester

**Weight:** 280gsm

#### Description:

- Side slash pockets
- 2 x 2 rib with spandex at cuffs
- Covered elastic waistband with interior drawstring
- No drawstring on youth sizes
- Timberlea leatherette patch

**New**

### T2004 - Adult Fleece Short

Sizes: XS - 2XL

**Fabric:** 50% Cotton, 50% Polyester

**Weight:** 280gsm

#### Description:

- 10" Inseam
- Side slash pockets
- Raw cut hem with double needle coverstitch
- Covered elastic waistband with interior drawstring
- Timberlea leatherette patch

\* Coming Spring 2020



	Black	Charcoal Melange	Military Green	Navy	Oxford Grey
T2003	●	●	●	●	●
T2003Y	●			●	●
T2004	●				●



is Authentic



#### 1919 - CHAMPION IS BORN

The Feinbloom family established a new sportswear business in Rochester, NY. The company was originally named Knickerbocker Knitting Mills.



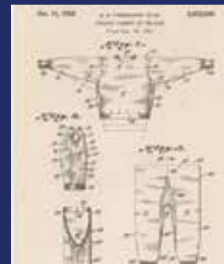
#### 1926 - CHAMPION SUPPORTS THEIR FIRST TEAM

After developing a line of sweaters and sportswear, Champion partnered with Wentworth Military Academy to provide their school uniform.



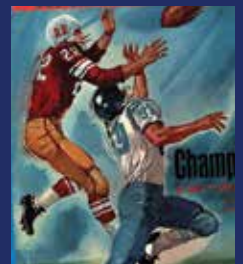
#### 1934 - BIRTH OF COLLEGIATE APPAREL

Champion partnered with Moe's Sport Shop to introduce collegiate sweatshirts and tees. This gave birth to collegiate apparel as we know it.



#### 1938 - CHAMPION PATENTS THE REVERSE WEAVE SWEATSHIRT

To overcome the shrinkage that came with frequent washing of sports apparel, Champion invented the world's first engineered athletic sweatshirt.



#### 1967 - CHAMPION INTRODUCES NYLON MESH JERSEY

The mesh nylon jersey was first designed to meet the needs of football players. They were such a success that Champion expanded them to basketball; our jerseys quickly became an industry standard and were copied by many competitors.





is Performance



#### 1968 – CHAMPION AND WOMEN'S ATHLETICS

Champion became a leader in women's athletic uniforms, including pioneering the sports bra in 1977.



#### 1987 – MUSIC CULTURE ADOPTS CHAMPION STYLE

Starting in the late 80's and early 90's, Champion experiences a surge in adoption among musicians – becoming synonymous with a different kind of team. NYC is ground zero for the trend.



#### 2017 – THE CHAMPION HOODIE BECOMES AN ICON

As testament to Champion's rich heritage, the Reverse Weave Hoodie was exhibited in the Museum of Modern Art (MoMA) as part of an exhibition which displayed fashion items that have had a strong impact on modern society.



#### 2019 – 100 YEARS FOR THE TEAM

Champion celebrates its 100th anniversary.



#### THE FUTURE

Champion expands their line of innovative sportswear to teams, campus stores and fashion influencers around the globe.



## Garment Dyed

Authentic garment dyed colours + Authentic lived-in washed softness = Authentic vintage Champion® style.



New



Sizes: S - 2XL

### CD100 Garment Dyed Tee

- 100% cotton
- 200 gsm, 10oz
- Garment dyed process results in washed colors with extra depth
- Set-on, rib crewneck keeps its shape wash after wash
- Double-needle construction throughout
- Champion "C" logo on left sleeve
- Woven Champion label

New



Sizes: S - 2XL

### CD200 Garment Dyed L/S Tee

- 100% cotton
- 200 gsm, 10oz
- Ribbed cuffs
- Garment dyed process results in washed colors with extra depth
- Set-on, rib crewneck keeps its shape wash after wash
- Double-needle construction throughout
- Champion "C" logo on left sleeve
- Woven Champion label

	BK -Black	B33 - Cactus	R6F - Concrete	EGL - Crimson	+35 - Delicate Blue	PZ - Grape Soda	NY - Navy	PKN - Pink Candy	WR - Saltwater	WH - White
CD100	●	●	●	●	●	●	●	●	●	●
CD200	●	●	●	●			●		●	

● Style is stocked in this colour

③ Style is stocked in additional sizes (3=3XL)





New



Sizes: S - 2XL

### CD400 Garment Dyed Fleece Crew

- 90% cotton/10% polyester
- 340 gsm, 16.7 oz
- Garment dyed process results in washed colors with extra depth
- Double-needle construction throughout
- V-notch
- Locker patch
- Champion "C" logo on left sleeve
- Twill neck taping
- Woven Champion label

New



Sizes: S - 2XL

### CD450 Garment Dyed Fleece Hood

- 90% cotton/10% polyester
- 340 gsm, 16.7 oz
- Garment dyed process results in washed colors with extra depth
- Double-needle construction throughout
- Locker patch
- Champion "C" logo on left sleeve
- Twill neck taping
- Woven Champion label
- Jersey lined hood
- Kanga pocket

	BK -Black	B33 - Cactus	R6F - Concrete	EGL - Crimson	+35 - Delicate Blue	NY - Navy	WR - Saltwater
CD400	●	●	●	●	●	●	●
CD450	●	●	●	●	●	●	●

● Style is stocked in this colour

③ Style is stocked in additional sizes (3=3XL)



## Originals

Champion® Originals is a collection of iconic styles that have been elevated with retail-inspired fabrics, modern silhouettes, fresh details and superior craftsmanship.



Sizes: S - 2XL

### AO600 Sueded Fleece Pullover Hood

- 285g, 14oz., 80/20 Cotton/Polyester
- Jersey-lined hood in Oatmeal Heather
- Flat-woven drawcords with ends turned and tacked
- 2x2 rib cuffs and waistband
- Triple-needle stitching throughout
- Relaxed waistband
- 100% cotton face
- Champion "C" embroidery in natural colour on left sleeve



Sizes: S - 2XL

### AO500 Sueded Fleece Crew

- 285g, 14oz., 80/20 Cotton/Polyester
- 2x2 rib collar, cuffs, waistband and V-Notch
- Forward shoulders
- Triple-needle stitching throughout
- Relaxed waistband
- 100% cotton face
- Champion "C" embroidery in natural colour on left sleeve



Sizes: S - 2XL

### AO700 Sueded Fleece Jogger

- 285g, 14oz., 80/20 Cotton/Polyester
- Front entry pockets with jersey-lined pocket bags
- Self-fabric waistband with encased elastic
- Flat-woven drawcords with ends turned and tacked
- Triple-needle stitched outseam
- Stitched mock fly
- Back pocket with ribbed welt
- 2x2 rib cuffs
- 100% cotton face
- Champion "C" embroidery in natural colour on left hip



Sizes: S - 2XL

### AO380 Long Sleeve Henley

- 160g, 7.86 oz., 100% Ring-Spun Cotton Slub Jersey
- 4-button placket with natural-coloured buttons
- Self-fabric contrasting inner placket
- 1x1 rib collar
- Raglan sleeves
- Open cuffs with double-needle hems
- Shaped shirttail hem with double-needle stitching
- Champion "C" logo wrap label on left sleeve

	Black (BK)	Carmine Red (RF)	Charcoal Heather (HL)	Navy (NY)	Navy Heather (N2)	Oxford Grey (OX)	Oxford Grey/Oatmeal Heather (ZZ)
AO380	●	●	●	●		●	
AO500	●		●		●		
AO600	●		●		●		●
AO700	●		●			●	



Style is stocked in this colour



Style is stocked in additional sizes (3=3XL)



### AO300 Triblend Varsity Tee



Sizes: S - 2XL

- 155g, 7.6 oz., 60/30/10 Polyester/Cotton/Rayon Jersey
- Distressed printed stripes on sleeves in a natural colour
- 1x1 rib collar
- Single-needle stitched armholes
- Double-needle stitched sleeves and bottom hem
- Champion "C" logo wrap label on left sleeve



Sizes: S - 2XL

### AO350 Women's Triblend Varsity Tee

- 155g, 7.6oz., 60/30/10 Polyester/Cotton/Rayon Jersey
- Distressed printed stripes on sleeves
- V-neck with self-fabric collar and scooped bottom hem
- Single-needle stitched armholes
- Scooped bottom hem
- Shaped shirttail hem with double-needle stitching
- Champion "C" logo wrap label on left sleeve

### AO650 Women's French Terry Zip Hood



Sizes: S - XL

- 250g, 12.3oz., 43/43/14 rayon/polyester/cotton french terry
- Scuba hood
- Raglan armholes
- Jersey-lined on seam pockets
- Exposed metal zipper with natural-coloured zipper tape
- 1x1 rib cuffs and waistband with spandex
- Flat-woven drawcords with ends turned and tied
- Longer length for comfort and coverage
- Champion "C" logo embroidery in natural colour on left sleeve



Sizes: S - XL

### AO750 Women's French Terry Jogger

- 250g, 12.3oz., 43/43/14 rayon/polyester/cotton french terry
- Jersey-lined on seam pockets
- 29" inseam
- 1x1 rib cuffs and waistband with spandex
- Flat-woven drawcords with ends turned and tied
- Drawcords are natural colored
- Champion "C" logo embroidery in natural colour on left hip

Athletic Royal Heather W/ Nat Stripe (K7)	Black W/Nat Stripe (K2)	Carmin Red Heather W/ Nat Stripe (K8)	Charcoal Heather W/ Nat Stripe (KE)	Navy Heather W/ Nat Stripe (K6)
●	●	●	●	●

Athletic Royal Heather W/ Nat Stripe (Q7)	Black W/Nat Stripe (Q4)	Carmin Red Heather W/ Nat Stripe (Q9)	Charcoal Heather W/ Nat Stripe (QE)	Navy Heather W/ Nat Stripe (Q6)	Oxford Grey/W/ Nat Stripe (QC)
●	●	●	●	●	●

	Black (BK)	Charcoal Heather (HL)
AO650	●	●
AO750	●	●

● Style is stocked in this colour ③ Style is stocked in additional sizes (3=3XL)



## Reverse Weave® Fleece

Our iconic 20oz/405gsm Champion Reverse Weave® Sweats only get better with time. They're specially knit to resist vertical shrinkage, so the length stays true to size. For 80 years, Reverse Weave® has been the standard in heavyweight durability and style.



### New Colours



**S101 Hood** Sizes: S - 2XL (Select Colours 3XL\*)

### S101 / S149 Reverse Weave®

#### Hood/Crew

82% Cotton/18% Polyester

**Oxford Grey:** 78% Cotton/22% Polyester

**Silver Grey:** 80% Cotton/20% Polyester

#### FEATURES

- 1x1 ribbed knit side gussets
- Double-needle stitching on body, collar, armholes, cuffs and waistband
- 3 ¾" wide 1x1 ribbed knit cuffs and waistband
- Full athletic fit
- "C" logo on left sleeve

### New Colours



**S149 Crew** Sizes: S - 2XL (Select Colours 3XL\*)

	BK - Black	HL - Charcoal Heather	14 - Dark Green	MR - Maroon	NY - Navy	OX - Oxford Grey	SK - Scarlet	SV - Silver Grey	PKN - Pink Candy
S101	3	3	●	●	3	3	●	●	●
S149	3	3	●	●	●	3	●	●	

● Style is stocked in this colour

3 Style is stocked in additional sizes (3=3XL)





Sizes: S - 2XL

### RW10 Reverse Weave® Pant

82% Cotton/18% Polyester

**Oxford Grey:** 78% Cotton / 22% Polyester

#### FEATURES

- Rib gusset in crotch
- Loose elastic cuffs
- Full athletic fit
- Side pockets
- Covered elastic waistband with cotton drawcord
- "C" logo at left hip



Sizes: S - 2XL

**New**

### RW25 Reverse Weave® Jogger

82% Cotton / 18% Polyester

**Oxford Grey:** 78% Cotton / 22% Polyester

#### FEATURES

- Side pockets
- Back right side pocket
- Ribbed waistband with cotton drawcord
- Ribbed cuffs
- Ribbed gusset
- Champion "C" logo at the left hip

	BK - Black	HL - Charcoal Heather	NY - Navy	OX - Oxford Grey
RW10	●			●
RW25	●	●	●	●

● Style is stocked in this colour

③ Style is stocked in additional sizes (3=3XL)



## Powerblend ECO® Fleece

This 15oz/305gsm environmentally conscious fleece collection is made with up to 5% recycled polyester. All Powerblend ECO® sweats feature Air-Jet Polyester for a softer hand, improved durability and less fabric pilling.

Champion's Double Dry® technology wicks moisture away from the body and controls moisture build-up to help keep you dry.

Powerblend ECO® fleece keeps millions of plastic bottles out of landfills annually.

IT IS TRULY A FEEL GOOD FLEECE!



New



Sizes: S - 3XL

### S400 Powerblend ECO® Fleece Quarter-Zip Pullover

**BODY:** 50% Cotton/50% Polyester

**RIB:** 49% Cotton / 49% Polyester / 2% Spandex

#### FEATURES

- Double Dry® fabric wicks moisture away from the body and helps control moisture buildup
- Fleece-lined collar
- Quarter-zip covered zipper
- Front Welt pockets
- Set-in Sleeves
- "C" logo on left sleeve





Sizes: S - 3XL

### S600 Powerblend ECO® Fleece Crew

**BODY:** 50% Cotton / 50% Polyester

**RIB:** 49% Cotton / 49% Polyester / 2% Spandex

#### FEATURES

- Double Dry® fabric wicks moisture away from the body and helps control moisture buildup
- 1x1 rib with spandex
- Double-needle stitching
- Set-in sleeves
- "C" logo on left sleeve
- Youth Companion style S690

**New  
Colours**



Sizes: S - 3XL

### S700 Powerblend ECO® Fleece Hood

**BODY:** 50% Cotton / 50% Polyester

**RIB:** 49% Cotton / 49% Polyester / 2% Spandex

#### FEATURES

- Double Dry® fabric wicks moisture away from the body and helps control moisture buildup
- Front pouch pocket with bartacks for durability
- Two-ply hood with matching drawstring
- 1x1 rib with spandex
- Cover stitching throughout
- "C" logo on left sleeve
- Youth Companion style S790



Sizes: S - 3XL

### S800 Powerblend ECO® Fleece Zip Hood

**BODY:** 50% Cotton / 50% Polyester

**RIB:** 49% Cotton / 49% Polyester / 2% Spandex

#### FEATURES

- Double Dry® fabric wicks moisture away from the body and helps control moisture buildup
- Front pouch pocket with bartacks for durability
- Two-ply hood with matching drawstring
- 1x1 rib with spandex
- Double-needle stitching
- Set-in sleeves
- "C" logo on left sleeve
- Youth Companion style S890

	BK - Black	WH - White	HL - Charcoal Heather	14 - Dark Green	DH - Dark Green Heather	GO - Gold	LB - Light Blue	LW - Light Steel	MR - Maroon	UA - Maroon Heather	NY - Navy	N2 - Navy Heather	ON - Orange	PR - Purple	RB - Royal	RH - Royal Blue Heather	SK - Scarlet	S9 - Scarlet Heather	SV - Silver Grey
S400	3		3					3			3								
S600	3	3	3	3	3	3		3	3	3	3	3	3	3	3	3	3	3	3
S700	3	3	3	3	3	3	3	3	3	3	3	3	3	3	3	3	3	3	3
S800	3		3	3				3	3		3				3		3		

● Style is stocked in this colour    3 Style is stocked in additional sizes (3=3XL)



### P800 / P900 / 70053BU Powerblend ECO® Fleece Pants

**BODY:** 50% Cotton / 50% Polyester

#### FEATURES

- Double Dry® fabric wicks moisture away from the body and helps control moisture buildup
- Covered elastic waistband with inside drawcord
- Double-needle stitching
- Pockets (P800 & 70053BU)
- "C" logo on left leg
- Youth companion styles: P900/P790, P800/P890



**P800**

Sizes: S - 3XL



**P900**

Sizes: S - 2XL (Select Colours: 3XL<sup>3</sup>)



**70053BU**

Sizes: S - 2XL

**New  
Colours**

	BK - Black	HL - Charcoal Heather	LW - Light Steel	NY - Navy	RB - Royal	SK - Scarlet
P800	3	3	3	3		
P900	3	3	3	3		

	003 - Black	G61 - Granite Heather	031 - Navy	806 - Oxford Grey
70053BU				

● Style is stocked in this colour    3 Style is stocked in additional sizes (3=3XL)





**S690** Sizes: S - XL



**S790** Sizes: S - XL



**S890** Sizes: S - XL

## S690/ S790 / S890 Youth Powerblend ECO® Fleece Tops

**BODY:** 50% Cotton / 50% Polyester

**RIB:** 49% Cotton / 49% Polyester / 2% Spandex

### FEATURES

- Double Dry® fabric wicks moisture away from the body and helps control moisture buildup
- 1x1 rib with spandex
- Double-needle stitching
- Two-ply hood (**S790/S890**)
- Front pouch pocket with bartacks for durability (**S790/S890**)
- "C" logo on left sleeve



**P790** Sizes: S - XL



**P890** Sizes: S - XL

## P790 / P890 Youth Powerblend ECO® Fleece Pants

**BODY:** 50% Cotton / 50% Polyester

### FEATURES

- Double Dry® fabric wicks moisture away from the body and helps control moisture buildup
- Covered elastic waistband
- Double-needle stitching
- "C" logo on left leg

	BK - Black	HL - Charcoal Heather	14 - Dark Green	LW - Light Steel	MR - Maroon	NY - Navy	RB - Royal	SK - Scarlet
S690	●		●	●		●	●	●
S790	●	●	●	●	●	●	●	●
S890	●			●		●		
P790	●			●		●	●	●
P890	●			●		●		

● Style is stocked in this colour

③ Style is stocked in additional sizes (3=3XL)



# Classic Jersey

The 100% cotton classics that never go out of style.



**T425** Sizes: S - 3XL

New Colours



**T435 Youth** Sizes: S - XL

## T425 / T435 Short Sleeve Tee

**BODY:** 100% Cotton

**LIGHT STEEL:** 90% Cotton / 10% Polyester

**ASH:** 99% Cotton / 1% Polyester

### FEATURES

- 9.8oz / 200gsm
- Shoulder-to-shoulder neck tape
- Tag free
- Two-needle stitched bottom and sleeves
- "C" logo on left sleeve



**CC8C** Sizes: S - 2XL

## CC8C Long Sleeve Tee

**BODY:** 100% Cotton

**LIGHT STEEL:** 90% Cotton / 10% Polyester

### FEATURES

- 8.6oz / 175gsm
- Taped crew neck
- Tag free
- Ribbed cuffs
- "C" logo on left sleeve



**T137** Sizes: S - 3XL



**T13Y Youth** Sizes: S - XL

## T137 / T13Y Raglan Tee

**BODY:** 100% Cotton

### FEATURES

- 8.6oz / 175gsm
- Contrast rib collar and sleeves
- Tag free
- Two-needle stitched bottom and sleeves
- Exterior jocktag at left hem
- "C" logo on left sleeve

New Colours

	BK - Black	WH - White	AS - Ash	HL - Charcoal Heather	14 - Dark Green	GO - Gold	LW - Light Steel	MR - Maroon	NY - Navy	ON - Orange	PR - Purple	RR - Red	RB - Royal
T425	3	3	3	3	3	3	3	3	3	3	3	3	3
T435													
CC8C													
T137	3	3	3	3	3	3	3	3	3	3	3	3	3
T13Y													
Body	BP - Black	8B - Oxford Grey	32 Oxford Grey	74 White	G4 White	W9 White	81 White	S3 White	Q1 White				
Sleeves	White	Black	Navy	Black	Dark Green	Maroon	Navy	Scarlet	Team Blue				

● Style is stocked in this colour

3 Style is stocked in additional sizes (3=3XL)



# Women's Jersey



New



Sizes: S - XL

## CP20 Women's Short Sleeve Ring Spun T-Shirt

- 100% ring spun cotton
- 9 oz, 185gsm
- Tag-free neck label
- Side-seamed and shaped
- Double-needle, cover-seamed narrow rib collar
- Double-needle sleeve and bottom hems
- Self-fabric shoulder-to-shoulder tape
- Champion "C" logo on left sleeve

- Available Spring 2020



Sizes: XS - 2XL

## 0348TL Women's Essential Racerback Tank

- 50% Cotton/50% Polyester
- Tag free
- Loose Fit
- "C" logo on left hem



Sizes: XS - 2XL

## 0349TL Women's Allegro Keyhole Tank

- 50% Polyester/50% Raylon
- Loose fit
- Scoop neck with keyhole racerback
- "C" logo on left hem

	BK - Black	WH - White	GPH - Graphite	NY - Navy	PR - Purple	RR - Red	SGH - Steel Grey Heather	6A - WOW Pink
0348TL	●	●		●	●	●	●	●
0349TL	●		●	●				
CP20	●	●						

● Style is stocked in this colour

③ Style is stocked in additional sizes (3=3XL)



## Performance

Athletic performance apparel runs right through the heart of our DNA. From Olympic teams to everyday athletes, we believe everyone has the heart of a Champion, and we'll help you find it. For over 100 years, Champion has been a leader in sports apparel, and our guiding principles remain unchanged: a love of sport, a spirit of innovation and uncompromised quality.



### 0514BU/BL/BY Men's, Women's & Youth Surge Jogger

**BODY:** 100% Polyester

#### FEATURES

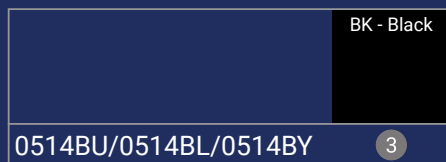
- Moisture-wicking fabric
- Anti-microbial qualities
- Relaxed hip and thigh
- Slim fitted ankle
- Branded exposed elastic waistband
- Self-fabric cuff
- Side pockets

Sizes:

Men's S - 3XL

Women's XS - 2XL

Youth S - L



● Style is stocked in this colour

③ Style is stocked in additional sizes (3=3XL)



# Double Dry® Interlock T-Shirt



6.85oz / 140gsm

Featuring FreshIQ® Advanced Odor Protection technology that attacks odor-causing bacteria so you can feel fresh all day.

Double Dry® fabric wicks moisture away from the body and helps control moisture build up.

50+ UPF provides excellent UV protection.

THE ULTIMATE WORKOUT TEES!



**CW22 - Men's** Sizes: S - 3XL



**CW23 Women's** Sizes: XS - 2XL



**CW24 - Youth** Sizes: S - XL



**CW26 Adult** Sizes: XS - 3XL

**CW22 / CW23 / CW24/ CW26**

**Essential Double Dry® Tee**

**BODY:** 100% Polyester Jersey Interlock

## FEATURES

- Self-fabric collar and neck tape
- Two-needle hem sleeves and bottom
- Cover-seamed armholes and neck for durability
- Tag free
- Reflective "C" logo on left sleeve and Champion script on back neck

**New Colours**

	BK - Black	WH - White	14 - Dark Green	NY - Navy	PR - Purple	RB - Royal	SK - Scarlet	R7 - Stone Grey	X1 - Stone Grey Camo	6A - WOW Pink
CW22	3	3	3	3	3	3	3	3	3	
CW23										
CW24										
CW26	3	3	3	3				3		

● Style is stocked in this colour

3 Style is stocked in additional sizes (3=3XL)



# Champion Fan Favourites

Look great on the field or off in these fan favourites.

**New**



Sizes: S - XL

## 0350TL Women's Fan Jersey

**BODY:** 100% Polyester

### FEATURES

- Relaxed fit
- Crossover collar
- Set-in sleeves with contrasting sleeve stripes



**Team Colour** Sizes: S - 2XL



**Reversed to white**

## 15023TU (Formerly B002) Reversible Practice Jersey

**BODY:** 100% Polyester

### FEATURES

- Open bottom hem for ease of printing
- Team colour side insert when reversed to white
- Full athletic fit
- Champion jocktag at lower left hem on white and "C" logo on upper right chest on team colour

0350TL		
Body	BKWH - Black	WHBK - White
Sleeve Stripes	White	Black

15023TU				
Team Colour	YZ - Athletic Royal	BP - Black	NW - Navy	RW - Scarlet
Reverse Side	White	White	White	White

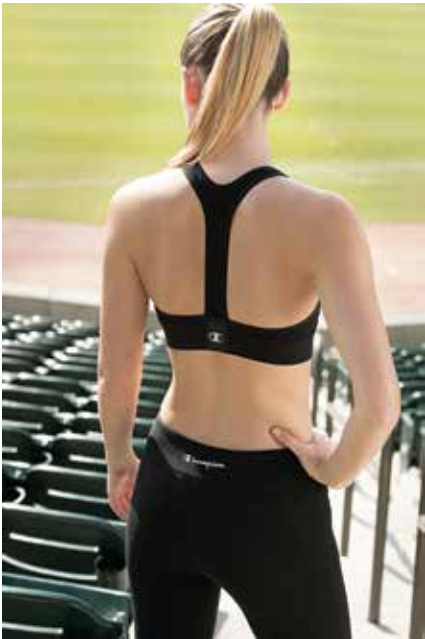
● Style is stocked in this colour

③ Style is stocked in additional sizes (3=3XL)

# Women's Essentials



Champion® introduced the sports bra to the world over 40 years ago, and the athletic landscape was forever changed. Continuing this pioneering spirit are the latest and most advanced Champion® sports bra and women's performance bottoms yet.



Sizes: XS - XL

### B900 Absolute Racerback Sports Bra

- 87% Polyester/13% Spandex
- SmoothTec® band resists irritation and chafe
- Double Dry™ technology wicks moisture to keep you cool and dry
- Minimal seams minimize irritation for distraction-free comfort
- Racerback silhouette ensures a free range of motion
- Reflective C logo at left chest and center back band



Sizes: XS - 2XL

### B940 Legging

- 250g 12.29oz., 88% Polyester/12% Spandex
- Wicking for moisture management
- Stretch for ease of movement
- Reflective C logo at bottom hem
- Fitted



Sizes: XS - 2XL

### B960 Capri

- 250g 12.29 oz., 88% Polyester/12% Spandex
- Wicking for moisture management
- Stretch for ease of movement
- Reflective C logo at bottom hem
- Fitted

	BK - Black
B900	●
B940	●
B960	●





# Adult/Youth Shorts

From the breathability of mesh to the durable comfort of cotton, Champion® shorts are made to outperform.

**New  
Colours**



**S162 Mesh Shorts With Pockets**

Sizes: S - 2XL (Select Colours 3XL\*)



**8731 Adult Mesh Shorts**

Sizes: S - 2XL (Select Colours 3XL\*)



**8212BY (formerly 8173) Youth**

**Mesh Shorts** Sizes: S - XL

## **S162 / 8731 / 8212BY Mesh Shorts**

**BODY:** 100% Polyester

### **FEATURES**

- 6.1oz / 125gsm
- Multi-needle elastic waistband with inside drawcord
- Full athletic fit

### **S162**

- Side Pockets
- 9" inseam
- "C" logo on left leg

### **8731**

- 9" inseam
- "C" logo on left hip

### **8212BY**

- 7" inseam
- "C" logo on left hip



**8180** Sizes: S - 2XL



**8187** Sizes: S - 2XL (Select Colours 3XL\*)

## **8180 / 8187 Classic Jersey Short**

**BODY:** 100% Cotton

### **FEATURES**

- 10oz / 200gsm
- Exposed elastic waistband with inside drawstring
- Double-needle stitching
- Full athletic fit

### **8180**

- 9" inseam
- "C" logo on left leg
- Side pockets

### **8187**

- 6" inseam
- "C" logo on left hip



**8214BU** Sizes: S - 2XL

## **8214BU 10" Training Short With Pockets**

100% Polyester

### **FEATURES**

- Seam pockets
- Moisture wicking fabric
- Anti-microbial qualities
- Elastic wasteband with draw string

	BK - Black	UC - Athletic Dark Green	34 - Athletic Grey	UF - Athletic Royal	14 - Dark Green	MR - Maroon	NY - Navy	OX - Oxford Grey	RR - Red	RB - Royal	SK - Scarlet	SV - Silver
S162	3	●	●	●	●	●	3	●	●	●	●	●
8731	3	●	●	●	●	●	3	●	●	●	●	●
8212BY	●	●	●	●	●	●	●	●	●	●	●	●
8214BU	●	●	●	●	●	●	●	●	●	●	●	●
8180	●	●	●	●	●	●	●	●	●	●	●	●
8187	3	●	●	●	●	●	3	3	●	●	●	●

● Style is stocked in this colour

3 Style is stocked in additional sizes (3=3XL)



ROLLOVER  
WAISTBAND

## CA33 Women's Mesh Shorts

**BODY:** 100% Polyester Mesh

**LINER:** 100% Polyester Tricot

### FEATURES

- 6.1oz / 125gsm
- Tricot lining to prevent show through
- 5" inseam
- Champion logo printed roll down waistband
- "C" logo on left hem

Sizes: S - 2XL



## New Colours

### 8215BL Women's Essential Short

- 50% Cotton/50% Polyester
- Exposed soft elastic waistband with "C" branding for roll-down
  - Side Vents
  - 3" inseam

Sizes: XS - 2XL



Sizes: S - XL

## New

### 8220BL Women's Ignite Shorts

**BODY:** 100% Polyester

- Moisture Wicking liner for comfort
- Elastic Waistband
- Binding along seam and hem edges for a retro look
- Engineered side panel to allow for movement
- Inseam 3.5"

\* Available Spring 2020

	BK - Black	FT - Forest	GPH - Graphite	MR - Maroon	NY - Navy	PR - Purple	RR - Red	6A - WOW Pink
CA33	●				●			
8215BL	●	●	●	●	●	●	●	●

8220BL	●	●
Body	BKHG - Black	NYHG - Navy
Side Panels	Heather Steel Grey	Heather Steel Grey

● Style is stocked in this colour

③ Style is stocked in additional sizes (3=3XL)



# Outerwear

Champion outerwear will have you looking great in any weather.



**S260 Women's**

Sizes: S - 2XL

**S270 Men's**

Sizes: S - 2XL

## S260 / S270

### Performance Fleece Full Zip Jacket

- 100% Polyester
- 9oz / 185gsm
- Reverse coil zipper
- Two-ply collar with plush comfort lining
- Side pockets
- Wicking finish
- Reflective "C" logo on left sleeve



Sizes: S - 3XL

## CO200 Packable Anorak Jacket

- 100% polyester micro poplin fabric
- Wind and rain resistant
- Half-zip placket
- Attached scuba collar with hood
- Elastic banding at cuffs
- Adjustable drawcords at bottom hem and hood
- Oversized kanga pocket
- Can be packed into front zip pocket
- Champion "C" logo on left sleeve

	BK - Black (S260/S270 2P)	1G - Gold	BQ - Graphite	NY - Navy	RB - Royal Blue	SK - Scarlet
S260	●					
S270	●					
CO200	3	3	3	3	3	3

● Style is stocked in this colour

3 Style is stocked in additional sizes (3=3XL)





Sizes: Adults XS - 3XL, Youth's S - L

### 1554TU/TY Adult & Youth Stadium Jacket

**BODY:** 100% Polyester

**Lining:** 100% Polyester, heavyweight fleece

#### FEATURES

- Water resistant
- Three-piece adjustable hood
- No drawstring in hood (Youth)
- Slash pockets
- Elastic cuffs
- Cordlock adjustment at hem (Adult)
- No drawstring in hem (Youth)



Sizes: Adult S - 3XL, Youth S-XL

### 1716TU/TY Adult & Youth Essential Jacket

**Body:** 100% Polyester

**Lining:** 100% Polyester

#### FEATURES

- Water Resistant
- Set-in Sleeve
- Forward Side Seams with on Seam Pockets
- Drop Tail
- Stand up Collar
- Matches 1714B pants

\* Available Spring 2020



Sizes: Men's XS - 3XL, Women's XS - 2XL, Youth XS - L

### 1714TU/TL/TY Men's, Women's & Youth Rush Jacket

**BODY:** 100% Polyester

**LINING:** 100% Polyester

#### FEATURES

- Water-resistant
- 3-piece adjustable hood (no drawstring in youth)
- Zippered pockets
- Elastic hem and cuffs



Sizes: Men's XS - 3XL, Women's XS - 2XL, Youth XS - L

### 1714BU/BL/BY Men's, Women's & Youth Rush Pant

**BODY:** 100% Polyester

**LINING:** 100% Polyester

#### FEATURES

- Water-resistant
- Elastic waistband with drawstring
- Side seam pockets
- Ankle zip

	BK - Black	FT - Forest	GPH - Graphite	MR - Maroon	NY - Navy	PR - Purple	RB - Royal Blue	RR - Red
1554TU	3	3	3	3	3	3	3	3
1554TY								
1714TU/1714TL/1714TY	3							
1714BU/1714BL/1714BY	3							
1716TU/TY	3							

● Style is stocked in this colour

3 Style is stocked in additional sizes (3=3XL)



# Accessories

Champion hats, bags and slides are the perfect finishing touch to any look.



Sizes: O/S

## 4026NN All Around Duffle Bag

100% Heavy Duty Polyester

Dimensions:

L: 21 3/4" x W: 10 3/4" x H: 11 3/4"

- Large u-shaped compartment
- Front pocket with mesh organizer
- Zippered side pockets with jock tag
- Detachable and adjustable padded shoulder strap
- Heavy duty metal hardware

New



Sizes: O/S

## 4031NN Essential Duffle Bag

100% Polyester

Dimensions:

L: 18" x W: 9" x H: 10"

- Water resistant
- Compartment with two zipper pulls
- Side pocket
- Contrast zipper and webbing
- Zippered interior pocket of main compartment (Dimensions 7" x 8")
- Champion jock tag on side
- "C" embroidery on front

\* Available Spring 2020

New Colours

## 4023NN All Sport Backpack

100% Heavy Duty Polyester

Dimensions:

L: 10" x W: 12" x H: 18"

- Mesh compartment
- Multi-purpose nylon strap and loop
- 2 mesh side pockets
- J-hook
- Zippered side pocket with jocktag
- Adjustable shoulder straps

New



Sizes: O/S

## 4030NN Essential Backpack

100% Polyester

Dimensions:

L: 10" x W: 6 1/2" x H: 17 3/4"

- Water Resistant
- Zippered main compartment with two zipper pulls
- Side Pockets
- Interior Pocket
- 5" Champion script embroidery
- "C" Patch on Strap

\* Available Spring 2020

	BK - Black	FT - Forest	MR - Maroon	NY - Navy	PR - Purple	RR - Red	RB - Royal	NBW - Navy/Black/White	RBW - Royal/Black/White	RDBW - Red/Black/White
4023NN	●							●	●	●
4026NN	●									
4030NN	●	●	●	●	●	●	●			
4031NN	●	●	●	●	●	●	●			

● Style is stocked in this colour

③ Style is stocked in additional sizes (3=3XL)



**New  
Sizes**



Sizes: Adult - XS-XL, Youth - M-L

### 4203NU/NY Slide Sandal

Lightweight EVA molded  
outsole

- Slide-on design
- Open toe
- Signature logo detailing
- Adjustable velcro strap with micro fibre upper

### Sizing

M	Fits	Youth	12 - 13
L	Fits	Youth	1 - 2
XS	Fits	Men's	3 - 4
S	Fits	Men's	5 - 6
M	Fits	Men's	7 - 8
L	Fits	Men's	9 - 10
XL	Fits	Men's	11 - 12

Women will need to size down two shoe sizes



Sizes: O/S

### 4101NN Twill Hat

100% Cotton

- Washed cotton twill
- Pre-curved bill
- 6 panel, unstructured, low-profile
- Self-fabric closure with brass
- Sewn eyelets
- Interior sweatband



Sizes: O/S

### 4102NN Stretch Fit Hat

97% Cotton/3% Spandex

- 6 panel, structured, mid-profile
- Stretch fit
- Sewn eyelets
- Interior sweatband



Sizes: O/S

### 4100NN Trucker Mesh Hat

100% Cotton

- Structured solid front panel
- Mesh side and back panels for a breathable fit
- Pre-curved bill
- Adjustable plastic snapback
- Sewn eyelets
- Interior sweatband



Sizes: O/S

### 4028NN All-Season Sling Bag

100% Polyester

Dimensions:

L: 13" x H: 17 1/2"

- Nylon webbing carrying handles
- Drawcord closure

\* Available Now

**New**



Sizes: O/S

### 4029NN Garment Bag

100% Polyester

- Water resistant
- Full front zipper
- Outside zipper pocket compartment
- Bag folds with handles for easy carrying
- 5" Champion script embroidery

\* Available Spring 2020

	BK - Black	WH - White	FT - Forest	MR - Maroon	NY - Navy	PR - Purple	RR - Red	RB - Royal	ST - Stone	BKWH - Black/White	NYWH - Navy/White	RDWH - Red/White	ROWH - Royal/White
4028NN	●												
4029NN	●												
4100NN										●	●	●	●
4101NN	●	●	●	●	●	●	●	●	●				
4102NN	●	●	●	●	●	●	●	●	●				
4203NU	●												

● Style is stocked in this colour

③ Style is stocked in additional sizes (3=3XL)



# Special Order Collection

Many more styles, colours, and sizes available by special order.  
See the **Team Catalogue** for full collection.

43008TU & 43008BU



8010TL & 8010BL



4027NN



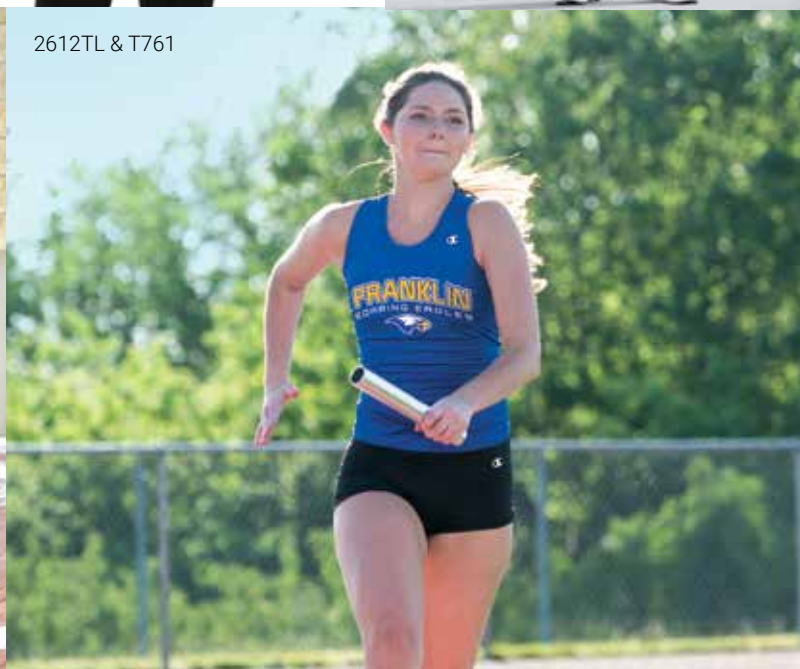
1516TL & 1516BL



1715TU & 1715TL & 4025NN



2612TL & T761



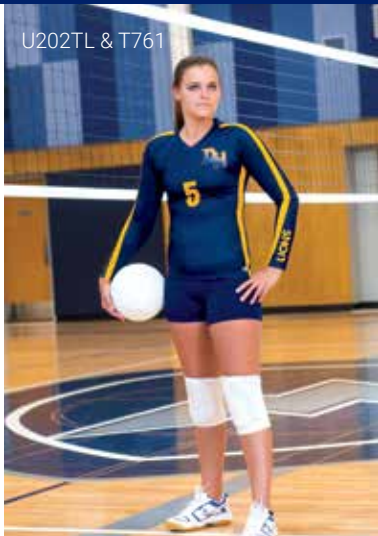
0350TL & 2397TU





Special Order **ULTRAFUSE™**

Champion's Ultrafuse sublimation program is the perfect way to create a customized look for your apparel or team uniform







# WEAR IT. LOVE IT. SELL IT.

Next Level Apparel started with a simple but powerful idea...create a favourite tee crafted from superior fabrics in sizes and fits for real people, then make it available in all the best colours at a value second to none.

Next Level Apparel is a premium fashion blank that picks up where the basic brands leave off, giving you the freedom to choose an inspirational t-shirt or sweatshirt worthy of your message or design.





## IDEAL COLLECTION

30 Singles 135g / 6.6 oz  
60% Combed Ring-Spun Cotton / 40% Polyester

Ideal value with the confidence of quality. The shirts you have been waiting for, at a price you could only dream of.



1533 - Front



1540



1533 - Back



New

1530

### 1530 Women's Ideal Flow Tee - Sizes: XS - 2XL

Generous cut for a loose fit. Curved hem w/ drop tail. Tear away label.

### 1533 Women's Ideal Racerback Tank - Sizes XS - 2XL

Self-fabric binding. Curved hem. Tear away label.

### 1540 Women's Ideal V - Sizes: XS - 2XL

(Select Colours: 3XL)

Modest V-Neck. Set-in baby rib collar. Tear away label.

	Black	White	Cancun	Cardinal	Dark Grey	Heather Grey	Hot Pink	Indigo	Kelly Green	Light Orange	Midnight Navy	Military Green	Mint	Purple Rush	Red	Royal	Tahiti Blue
1530	●	●				●											
1533	●	●	●	●	●	●	●	●	●	●	●	●	●	●	●	●	●
1540	3	3			3	●	●	●	●		●			●	●	●	

● Style is stocked in this colour

2 3 3/4 Style is stocked in additional sizes (2=2XL, 3=3XL, 3/4=3XL & 4XL)

## FESTIVAL COLLECTION

40 Singles 120g / 5.9 oz  
65% Polyester /  
35% Combed Ring-Spun Cotton

Our silky soft poly/cotton is breathable,  
lightweight and durable.

5030



### 5013 Women's Festival Muscle Tank - Sizes: XS - XL

Relaxed fit. Oversized armholes. Tear away label.

### 5030 Women's Festival Scoop - Sizes: XS - XL

(Select Colours: 2XL)

Relaxed fit. Raw edge, exaggerated drop tail hem. Tear away label.

### 5033 Women's Festival Tank - Sizes: XS - XL

Relaxed fit. Exaggerated curved hem. Tear away label.

5013



5033



### 5040 Women's Festival Sleeveless V - Sizes: XS - XL

(Select Colours: 2XL)

Self-fabric binding. Modestly curved hem. Tear away label.

### 5080 Women's Festival Cali Crop - Sizes: XS - XL

Relaxed fit. Raw edge sleeve and hem. Tear away label.

### 6200 Unisex Poly/Cotton Crew - Sizes: XS - 2XL

(Select Colours: 3XL)

Set-in self-fabric collar with front coverstitch. Satin label.

● Style is stocked in this colour

② ③ ③/4 Style is stocked in additional sizes (2=2XL, 3=3XL, 3/4=3XL & 4XL)



New  
Colours

6200



5040

5080



	Black	White	Charcoal	Antique Denim	Antique Gold	Royal Pine	Smoked Paprika
5013	●	●	●	●	●	●	●
5030	2	2	●			●	●
5033	●	●	●	●	●	●	●
5040	2	●	●				
5080	●	●	●				
6200	3	●	●			●	

● Style is stocked in this colour

2 3 3/4 Style is stocked in additional sizes (2=2XL, 3=3XL, 3/4=3XL & 4XL)



## FINE JERSEY

32 Singles 145g / 7.1 oz  
100% Combed Ring-Spun Cotton

Our best selling combed ring-spun cotton tees are comfortable, soft and have the perfect fit!



3602



3310



3600



3604 &  
3904

### 3310 Youth Premium S/S Crew

- Sizes XS (4/5) - XL (14/16)

Set-in baby rib collar. Tear away label.

### 3600 Unisex Premium S/S Crew - Sizes:

XS - 2XL (Select Colours: 3XL - 4XL)

Best seller! Set-in baby rib collar. Tear away label.

### 3602 Unisex Long Body Crew - Sizes: S - 2XL

Set-in baby rib collar. Curved hem. Tear away label.

### 3604 Unisex Ringer Tee - Sizes: XS - 3XL

Contrast baby rib bound collar & sleeves. Tear away label.

### 3650 Unisex S/S Raglan Tee - Sizes: XS - 3XL

Contrast raglan sleeves and bound neck. Tear away label.

### 3710 Girl's Princess Tee - Sizes: XS (3/4) - XL (14/16)

Set-in baby rib collar. Tear away label.

### 3900 Women's Boyfriend Tee - Sizes: XS -

2XL (Select colours: 3XL)

Set-in baby rib collar. Tear away label.

### 3904 Women's Ringer Tee - Sizes: S - 2XL

Contrast baby rib bound collar & sleeves. Tear away label.

● Style is stocked in this colour

② ③ ③/4 Style is stocked in additional sizes (2=2XL, 3=3XL, 3/4=3XL & 4XL)



3710



3900



3650

	Black/White	Black/Heather Grey	Warm Grey/Black	White/Black	Heather Grey/Black
3604					
3650					
3904					

	Black	White	Cardinal	Cool Blue	Heather Grey	Heavy Metal	Indigo	Kelly Green	Light Olive	Midnight Navy	Military Green	Natural	Purple Rush	Red	Royal	Tahiti Blue	Turquoise
3310																	
3600	3/4	3			3	3/4	3		3	3	3			3/4			
3602																	
3710																	
3900	3				3												

● Style is stocked in this colour

② ③ 3/4 Style is stocked in additional sizes (2=2XL, 3=3XL, 3/4=3XL & 4XL)



## CVC

32 Singles 145g / 7.1 oz  
60% Combed Ring-Spun Cotton /  
40% Polyester

Top of the line fabric that stands up to consistent wear without sacrificing fit or feel. Perfect for all your favourite heather colours plus solid white and black



New  
Colours

3312

### 3312 Youth CVC Crew - Sizes: XS (4/5) - XL (14/16)

Set-in baby rib collar. Tear away label.

### 3352 Youth CVC ¾ Raglan - Sizes:

XS(4/5) - XL(14/16)

Contrast sleeves and set-in collar. Tear away label.

### 6210 Unisex Premium CVC Crew -

Sizes: XS - 2XL (Select Colours: 3XL - 4XL)

Best seller! Set-in baby rib collar. Tear away label.



New  
Colours

3352



6210

### 6251 Unisex CVC ¾ Raglan - Sizes: XS - 3XL

Contrast sleeves and set-in collar. Tear away label.

### 6610 Women's CVC Crew - Sizes: XS - 2XL

(Select Colours: 3XL)

Set-in baby rib collar. Tear away label.

### 6640 Women's CVC Deep V - Sizes: S - 2XL

Set-in baby rib collar. Tear away label.

● Style is stocked in this colour

② ③ ③/4 Style is stocked in additional sizes (2=2XL, 3=3XL, 3/4=3XL & 4XL)





3352						
6251	3	3	3	3	3	3
SLEEVES	Black	Black	Midnight Navy	Black	Red	Royal
BODY	Black	Dark Heather Grey	Dark Heather Grey	White	White	White

	Black	White	Apple Green	Bondi Blue	Cardinal	Charcoal	Dark Heather Grey	Espresso	Indigo	Ice Blue	Lush	Midnight Navy	Military Green	Mint	Purple Rush	Red	Royal	Sand	Storm	Warm Grey
3312																				
6210	3/4	3				3/4	3/4					3				3	3/4			
6610	3					3	3													
6640																				

● Style is stocked in this colour

② ③ 3/4 Style is stocked in additional sizes (2=2XL, 3=3XL, 3/4=3XL & 4XL)

## TRI-BLEND

32 Singles 145g / 7.1 oz  
50% Polyester / 25% Rayon /  
25% Combed Ring-Spun Cotton

Our perfect blend tri-blend is incredibly soft with great drape, stretch, and recovery. It's offered in a variety of styles with an awesome vintage look.

6010



**6010 Unisex Tri-Blend Crew** - Sizes: XS - 2XL (Select Colours: 3XL)

Set-in baby rib collar. Satin label.

**6040 Men's Tri-Blend V** - Sizes: S - 2XL

Set-in baby rib collar. Satin label.

**6051 Unisex Tri-Blend  $\frac{3}{4}$  Raglan** - Sizes XS - 2XL (Select Colours: 3XL)

Contrast sleeves and set-in collar. Curved hem. Satin label.

**6310 Youth Tri-Blend Crew** Sizes: XS (4-5) - XL (14-16)

Set-in baby rib collar. Satin label.

6040



6310



6710



**6710 Women's Tri-Blend Crew** - Sizes: S - 2XL

Set-in baby rib collar. Satin label.

**6733 Women's Tri-Blend Racerback Tank**

- Sizes: XS - 2XL

Flatlock finished hems for a raw edge look. Satin label.

**6740 Women's Tri-Blend Deep V** - Sizes: S - 2XL

Set-in baby rib collar. Satin label.

● Style is stocked in this colour

② ③ ③/4 Style is stocked in additional sizes (2=2XL, 3=3XL, 3/4=3XL & 4XL)





6733



6740



6051

6051	3	3		3	3				3				3			3	
SLEEVES	PREMIUM HEATHER	ENVY	MILITARY GREEN	VINTAGE BLACK	VINTAGE NAVY	VINTAGE RED	VINTAGE ROYAL	INDIGO	PREMIUM HEATHER	PURPLE RUSH	TAHITI BLUE	VENETIAN GREY	VINTAGE BLACK	VINTAGE PINK	VINTAGE PURPLE	VINTAGE RED	VINTAGE ROYAL
BODY	VINTAGE BLACK	PREMIUM HEATHER	PREMIUM HEATHER	PREMIUM HEATHER	PREMIUM HEATHER	PREMIUM HEATHER	PREMIUM HEATHER	HEATHER WHITE	HEATHER WHITE	HEATHER WHITE	HEATHER WHITE	HEATHER WHITE	HEATHER WHITE	HEATHER WHITE	HEATHER WHITE	HEATHER WHITE	HEATHER WHITE

	Envy	Heather White	Indigo	Macchiato	Military Green	Purple Rush	Premium Heather	Tahiti Blue	Venetian Grey	Vintage Black	Vintage Navy	Vintage Pink	Vintage Purple	Vintage Red	Vintage Royal	Vintage Shocking Pink	Vintage Turquoise
6010		3		3	3		3			3	3		3	3			3
6040																	
6310																	
6710																	
6733																	
6740																	

● Style is stocked in this colour

2 3 3/4 Style is stocked in additional sizes (2=2XL, 3=3XL, 3/4=3XL & 4XL)



## MOCK TWIST JERSEY

20 Singles 175g / 8.6 oz  
60% Combed Ring-Spun Cotton  
40% Polyester

A soft and silky hand with a snowy, heathered look that is perfect for athleisure and lifestyle markets.

## PCH FLEECE

250g / 12.3 oz  
60% Cotton / 40% Polyester

This mid-weight heathered fleece is very soft and durable.



2021



9300



### 2021 Unisex Mock Twist Raglan Hoody

- Sizes: XS - 2XL

Raglan sleeve with contrast flatlock top stitch. Curved hem. Tear away label.

### 9300 Unisex PCH Hooded Pullover Sweatshirt

- Sizes: XS - 2XL (Select Colours 3XL)

Clean finished pockets. Metal eyelets. Ribbed cuffs. Tear away label.

	Heather Black	Heather Grey	Heather Maroon	Heather Midnight Navy	Heather Military Green	BLACK
2021		●				●
9300	3	●	●	3	●	

● Style is stocked in this colour

2 3 3/4 Style is stocked in additional sizes (2=2XL, 3=3XL, 3/4=3XL & 4XL)

## DENIM FLEECE

250g / 12.3 oz  
52% Cotton / 48% Polyester

Inspired by your favourite pair of jeans, our heather denim-inspired fleece gives these modern styles a cool, vintage vibe.



9800



9801

### 9800 Men's Denim Fleece Jogger -

Sizes: S -2XL

Side pockets. Back pocket. Solid colour waistband and cuffs. Tear away label.

### 9801 Women's Denim Fleece Jogger

- Sizes: XS -2XL

Side pockets. Solid colour waistband and cuffs. Tear away label.

	Black	Navy
9800	<input checked="" type="radio"/>	<input checked="" type="radio"/>
9801	<input checked="" type="radio"/>	<input checked="" type="radio"/>

☒ Style is stocked in this colour

☒ ☒ ☒ Style is stocked in additional sizes (2=2XL, 3=3XL, 3/4=3XL & 4XL)



# Special Order Collection



1510 - Women's Ideal Crew P. 64



1530 - Women's Ideal Flow Tee P. 66



1533 - Women's Ideal Racerback Tank P. 62



1534 - Women's Ideal Colorblock Racerback Tank P. 68



1540 - Women's Ideal V P. 63



1560 - Women's Ideal Dolman P. 65



1800 - Unisex Ideal Heavyweight Crew P. 60 - 61



2021 - Mock Twist Raglan Hoody P. 79



2022 - Mock Twist Short Sleeve Hoody P. 79



2050 - Men's Mock Twist Raglan Crew P. 79



3110 - Toddler Tee P. 23



3200 - Premium Fitted S/S V P. 16



3310 - Youth Premium S/S Crew P. 23



3312 - Youth Premium CVC S/S Crew P. 31



3352 - Youth CVC 3/4 Raglan P. 30



3533 - Women's Spandex Tank P. 74



3600 - Premium Fitted S/S Crew P. 11



3600A - Cotton Crew (USA Made) P. 49



3601 - Premium Fitted L/S Crew P. 13



3602 - Long Body Crew P. 15



3604 - Ringer Tee P. 20-21



3605 - Unisex Pocket Crew P. 14



3633 - Premium Fitted Jersey Tank P. 15



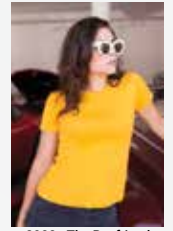
3650 - Unisex S/S Raglan Tee P. 18-19



3710 - Girl's Princess Tee P. 22



3712 - Girl's Princess CVC Tee P. 31



3900 - The Boyfriend Tee P. 12



3900A - Women's Boyfriend Tee (USA Made) P. 49



3904 - Women's Ringer Tee P. 20-21



3940 - Women's Relaxed V P. 17



4210 - Unisex Eco Performance Tee P. 51



4212 - Youth Eco Performance Crew P. 52



4240 - Women's Eco Performance V P. 53



4600 - Unisex Eco Heavyweight Tee P. 50



5013 - Women's Festival Muscle Tank P. 57



5030 - Women's Festival Scoop P. 56



5033 - Women's Festival Tank P. 57



5040 - Women's Festival Sleeveless V P. 57



5080 - Women's Festival Call Crop P. 56



6010 - Tri-Blend Crew P. 32



6010A - Tri-Blend Crew (USA Made) P. 49



6021 - Unisex Tri-Blend L/S Hoody P. 42



6040 - Men's Tri-Blend V P. 34



6051 - Unisex Tri-Blend 3/4 Raglan P. 43



6071 - Tri-Blend L/S Crew P. 39



6072 - Men's Tri-Blend L/S Henley P. 42



6200 - Poly/Cotton Crew P. 56



6210 - Premium Fitted CVC Crew P. 26



6233 - Premium Fitted CVC Tank P. 30



6240 - Premium Fitted CVC V P. 28



6251 - Unisex CVC 3/4 Sleeve Raglan P. 24-25



6310 - Youth Tri-Blend Crew P. 33



6333 - Men's Muscle Tank P. 69



6338 - Gathered Racerback Tank P. 69





6360 - Women's Roll Sleeve Dolman P. 67



6407 - Unisex Sueded Snow Crew P. 45



6410 - Premium Fitted Sueded Crew P. 44



6411 - Unisex Sueded L/S Crew P. 47



6440 - Premium Fitted Sueded V P. 46



6480 - The Sueded V P. 46



6491 - The Sueded Hooded Zip P. 47



6521 - The Burnout Hoody P. 77



6533 - Burnout Racerback Tank P. 76



6610 - The CVC Crew P. 27



6633 - The Jersey Racerback Tank P. 75



6640 - The CVC Deep V P. 29



6710 - Women's Tri-Blend Crew P. 33



6730 - Women's Tri-Blend Scoop P. 38



6731 - Tri-Blend L/S Scoop P. 41



6733 - Tri-Blend Racerback Tank P. 36



6734 - Tri-Blend Racerback Tank Dress P. 37



6740 - Women's Tri-Blend Deep V P. 35



6760 - Tri-Blend Dolman P. 40



6931 - The Terry L/S Scoop P. 72



6933 - The Terry Racerback Tank P. 73



6951 - Terry Raw Edge 3/4 Sleeve Raglan P. 71



7401 - Garment Dyed L/S Crew P. 82



7401S - Power L/S Crew P. 85



7410 - Garment Dyed S/S Crew P. 82



7410S - Power Crew P. 84



7415 - Garment Dyed S/S Pocket Crew P. 81



7415S - Power Pocket Crew P. 84



7433 - Garment Dyed Tank P. 81



7433S - Power Tank P. 85



7451 - Garment Dyed L/S Pocket Crew P. 82-83



7451S - Power L/S Pocket Crew P. 86



7481S - Women's Cropped L/S Tee P. 70



8201 - Unisex L/S Thermal P. 90



8221 - Unisex L/S Thermal Hoody P. 87



9000 - The French Terry Raglan Crew P. 100



9001 - Unisex Crew W/ Pocket P. 92



9103 - Youth Zip Hoody P. 94



9300 - The PCH Hooded Pullover Sweatshirt P. 95



9301 - The French Terry Hooded Pullover P. 98



9303 - Unisex Pullover Hoody P. 91



9600 - The Denim Fleece Hooded Zip P. 101



9601 - French Terry Hooded Zip P. 97



9602 - Unisex Zip Hoody P. 93



9603 - Women's PCH Raglan Zip Hoody P. 96



9700 - Unisex PCH Bomber Jacket P. 99



9800 - Men's Denim Fleece Jogger P. 102-103



9801 - Women's Denim Fleece Jogger P. 101



## WE DECORATE!

As a one step customization shop, Catalyst Group can create an exclusive look for any order.

## THE CATALYST ADVANTAGE

- One invoice
- One contact
- No shipping costs to and from decorator
- No/low risk of damages

## DECORATION OPTIONS

- Embroidery
- Twill appliqué
- Felt appliqué
- Screen printing
- Custom printed neck labels  
(on Next Level Apparel)
- Specialty screen print inks such as:
  - Crystalina
  - Gel
  - Glitter
  - Metallic
  - High Density
  - Neon
  - Reflective
  - Puff
  - Glow
  - Discharge
  - Foil
  - Silicone

(Note minimums may apply to specialty inks)



# BRAND SIZE CHARTS



UNISEX SIZING							
	XS	S	M	L	XL	2XL	3XL
CHEST	30 - 32	34 - 36	38 - 40	42 - 44	46 - 48	50 - 52	54 - 56
WAIST	24 - 26	28 - 30	32 - 34	36 - 38	40 - 42	44 - 46	48 - 50

YOUTH SIZING			
	S (5/6)	M (7/8)	L (10/12)
CHEST	22 - 24	24 - 27	27 - 30
WAIST	22 - 23	23 - 24	24 - 26
Height (INCHES)	41 - 46.5	46.5 - 52.5	52.5 - 58
Weight (POUNDS)	39 - 50	50 - 65	65 - 86



MEN'S SIZING						
	S	M	L	XL	2XL	3XL
CHEST	34 - 36	38 - 40	42 - 44	46 - 48	50 - 52	54 - 56
WAIST	28 - 30	32 - 34	36 - 38	40 - 42	44 - 46	48 - 50

WOMEN'S SIZING						
	XS (0 - 2)	S (4 - 6)	M (8 - 10)	L (12 - 14)	XL (16 - 18)	2XL (20 - 22)
BUST	32 - 33	34 - 35	36 - 37	38.5 - 40	41.5 - 43.5	45.5 - 47.5
WAIST	25 - 26	27 - 28	29 - 30	31.5 - 33.25	35 - 37.25	39.5 - 41.75
HIP	35 - 36	37 - 38	39 - 40	41.5 - 43	44.5 - 46.5	48.5 - 50.5

YOUTH SIZING				
	YS (8)	YM (10 - 12)	YL (14 - 16)	YXL (18 - 20)
HEIGHT (INCHES)	50 - 51	55 - 58	62 - 64	67 - 68
WEIGHT	55.5 - 59	73.5 - 87	100.5 - 115	126.5 - 137
CHEST	27	28 - 29.5	31 - 32.5	34 - 35.5
WAIST	24.5	24.5 - 25.5	26.5 - 27.5	28.5 - 29.5



Gender		XS	S	M	L	XL	2XL	3XL	4XL
Men's/Unisex (Chest)	*Garment Measurements	33"-35"	35" - 38"	38" - 41"	43" - 44"	45" - 48"	48" - 52"	53.5" - 56"	60"
Ladies' Fitted (Chest)	*Garment Measurements		29.5"	31.5"	33.5"	36.5"	39.5"		
Ladies' Fitted (Size)			0 - 2	2 - 4	4 - 6	8 - 10	12		
Ladies' Relaxed/Classic (Chest)	*Garment Measurements	30"	32"	34"	36"	39"	42"	45.5"	
Ladies' Relaxed/Classic (Size)		0 - 2	2 - 4	4 - 6	8 - 10	12 - 14	14 - 16	18 - 20	
Ladies' Dolman/Flowy (Chest)	*Garment Measurements	35"	37"	38"	40"	44"	47"	50"	
Ladies' Dolman/Flowy (Size)		2 - 6	4 - 8	6 - 10	8 - 12	12 - 16	18 - 20	20 - 24	
Boys/Youth (Size)		4/5	6/7	8	10/12	14/16			
Girls' (Size)		3/4	6/6X	7/8	10/12	14/16			
Toddler (Size)		2T	3T	4T					
Men's Joggers (Waist)	*Garment Measurements		29"	31"	33"	35"	37"		
Men's Joggers (Inseam)	*Garment Measurements		30"	30"	30"	30.5"	31"		
Ladies' Joggers (Waist)	*Garment Measurements	26.5"	28.5"	30.5"	32.5"	34.5"	36.5"		
Ladies' Joggers (Inseam)	*Garment Measurements	27.75"	28.25"	28.25"	28.25"	28.75"	29.5"		

SIZE EQUIVALENT (Unisex Fit)	XS	S	M	L	XL	2XL	3XL	4XL
Men's	XS	S	M	L	XL	2XL	3XL	4XL
Women's	S	M	L	XL	2XL	3XL	4XL	5XL



INDEX

TIMBERLEA

T2000 Adult Fleece ¼ Zip	9
T2001 Adult Fleece Varsity Jacket	8
T2002 Adult Fleece Colourblock Hood	10
T2002Y Youth Fleece Varsity Jacket	10
T2003 Adult Fleece Jogger	11
T2003Y Youth Fleece Jogger	11
T2004 Adult Fleece Short	11
T3000 Adult Jersey Hood	7
T4000 Adult Flannel Hood	6
T5000 Adult Sherpa Fleece ¼ Zip	5

CHAMPION

8180 Cotton Jersey Short w/ Pockets - 9"	30
8187 Cotton Jersey Gym Short - 6"	30
8731 Mesh Short - 9"	30
0348TL Women's Essential Tank	25
0349TL Women's Allegro Keyhole Tank	25
0350TL Women's Fan Jersey	28
0514BL Women's Surge Jogger	26
0514BU Men's Surge Jogger	26
0514BY Youth Surge Jogger	26
15023TU Adult Reversible Practice Jersey (Formerly B002)	28
1554TU Adult Stadium Jacket	33
1554TY Youth Stadium Jacket	33
1714BL Women's Rush Pant	33
1714BU Men's Rush Pant	33
1714BY Youth Rush Pant	33
1714TL Women's Rush Jacket	33
1714TU Men's Rush Jacket	33
1714TY Youth Rush Jacket	33
1716TU Adult Essential Jacket	33
1716TY Youth Essential Jacket	33
4023NN All Sport Backpack	34
4026NN All Around Duffle Bag	34
4028NN All Season Sling Bag	35
4029NN Garment Bag	35
4030NN Essential Backpack	34
4031NN Essential Duffle Bag	34
4100NN Trucker Mesh Hat	35
4101NN Twill Hat	35
4102NN Stretch Fit Hat	35
4203NU Adult Slide Sandal	35
4203NY Youth Slide Sandal	35

70053BU PowerBlend ECO® Fleece Jogger with Pocket	22
8212BY Youth Mesh Short - 7" (Formerly 8173)	30
8214BU Training Short w/ Pockets - 10"	30
8215BL Women's Essential Short	31
8220BL Women's Ignite Short	31
A0300 Men's Triblend Varsity T-shirt	17
A0350 Women's Triblend Varsity T-shirt	17
A0380 Long Sleeve Henley	16
A0500 Sueded Fleece Crew	16
A0600 Sueded Fleece Pullover Hood	16
A0650 Women's French Terry Full Zip Hood	17
A0700 Sueded Fleece Jogger	16
A0750 Women's French Terry Jogger	17
B900 Women's Absolute Sports Bra	29
B940 Women's Performance Tight	29
B960 Women's Performane Capri	29
CA33 Women's Mesh Short - 5"	31
CC8C Long Sleeve Cotton Tee	24
CD100 Garment Dyed Tee	14
CD200 Garment Dyed L/S Tee	14
CD400 Garment Dyed Fleece Crew	15
CD450 Garment Dyed Fleece Hood	15
C0200 Packable Anorak Jacket	32
CP20 Women's Short Sleeve Ring Spun T-Shirt	25
CW22 Essential Double Dry® Tee	27
CW23 Women's Essential Double Dry® V-Neck Tee	27
CW24 Youth Essential Double Dry® Tee	27
CW26 Essential Double Dry® L/S Tee	27
P790 Youth Powerblend ECO® Fleece ClosedBottom Pant	23
P800 Powerblend ECO® Fleece Open Bottom Pant	
w/ Pockets	22
P890 Youth Powerblend ECO® Fleece Open Bottom Pant w/ Pockets	23
P900 Powerblend ECO® Fleece Closed Bottom Pants	22
RW10 Reverse Weave® Fleece Closed Bottom Pants	19
RW25 Reverse Weave® Fleece Jogger	19
S101 Reverse Weave® Fleece Hood	18
S149 Reverse Weave® Fleece Crew	18
S162 Mesh Short w/ Pockets	30
S260 Women's Performance Fleece Full Zip Jacket	32
S270 Men's Performance Fleece Full Zip Jacket	32
S400 Powerblend ECO® Fleece 1/4 Zip Pullover	20
S600 Powerblend ECO® Fleece Crew	21
S690 Youth Powerblend ECO® Fleece Crew	23

S700 Powerblend ECO® Fleece Hood	21
S790 Youth Powerblend ECO® Fleece Hood	23
S790 Youth Powerblend ECO® Fleece Hood	23
S800 Powerblend ECO® Fleece Full Zip Hood	21
S890 Youth Powerblend ECO® Fleece Full Zip Hood	23
T137 Raglan Baseball Tee	24
T13Y Youth Raglan Baseball Tee	24
T425 Short Sleeve Cotton Tee	24
T435 Youth Short Sleeve Cotton Tee	24

NEXT LEVEL APPAREL

1530 Women's Ideal Flow Tee	39
1533 Women's Ideal Racerback Tank	39
1540 Women's Ideal V	39
2021 Unisex Mock Twist L/S Raglan Hoody	48
3310 Youth Premium S/S Crew	42
3312 Youth CVC Crew	44
3352 Youth CVC 3/4 Raglan	44
3600 Unisex Premium S/S Crew	42
3602 Unisex Long Body Crew	42
3604 Unisex Ringer Tee	42
3650 Unisex S/S Raglan Tee	43
3710 Girl's Princess Tee	43
3900 Women's Boyfriend Tee	43
3904 Women's Ringer Tee	42
5013 Women's Festival Muscle Tank	40
5030 Women's Festival Scoop	40
5033 Women's Festival Tank	40
5040 Women's Festival Sleeveless V	41
5080 Women's Festival Cali Crop	41
6010 Unisex Tri-Blend Crew	46
6040 Men's Tri-Blend V	46
6051 Unisexl Tri-Blend 3/4 Raglan	47
6200 Unisex Poly/Cotton Crew	41
6210 Unisex Premium CVC Crew	44
6251 Unisex CVC 3/4 Raglan	45
6310 Youth Tri-Blend Crew	46
6610 Women's CVC Crew	45
6640 Women's CVC Deep V	45
6710 Women's Tri-Blend Crew	46
6733 Women's Tri-Blend Racerback Tank	47
6740 Women's Tri-Blend Deep V	47
9300 Unisex PCH Hooded Pullover Sweatshirt	48
9800 Men's Denim Fleece Jogger	49
9801 Women's Denim Fleece Jogger	49



## MAKING THE WORLD A MORE COMFORTABLE PLACE.

Hanes has some big goals. By 2020 we are committed to:

- Securing 40% of our total energy from renewable sources
- Reducing our water usage by 50%
- Being 100% landfill free

Visit [Hanesforgood.com](http://Hanesforgood.com) to learn more about our sustainability efforts.



### Energy Star Partner of the Year — again

We're proud to announce that Hanes has been selected as a U.S. EPA ENERGY STAR Partner of the Year 9 times in a row.



As You Sow, a corporate responsibility advocacy group, gave "A" grades to HanesBrands for its code of conduct, compliance auditing, remediation and transparency.



HanesBrands has used over \$1 million in cash generated from the sale of recyclable materials to fund dozens of community development projects around the globe.



HanesBrands is one of only 3 apparel and shoe manufacturers to receive an "A" grade from this independent research tool.



All HanesBrands-owned offshore facilities and significant contract facilities have been certified by the Worldwide Responsible Accredited Production Organization.



HanesBrands is a fully accredited participating company in the Fair Labor Association.

## SOCIAL RESPONSIBILITY AND WRAP CERTIFICATION

At **Next Level Apparel** we are committed to the highest standards in every aspect of our business. Each member of our dynamic team is dedicated to delivering a superior customer service experience. We follow and adhere to the CPSIA (Consumer Product Safety Improvement Act) testing standards.

Our WRAP certified (Worldwide Responsible Accredited Production) factories are committed to the highest ethical standards of conduct and best quality practices. At Next Level Apparel we respect the rights of each individual and care for the environment.



### Protection of the Environment

Our mission is to create a garment that destroys the notion of a disposable tee, and in turn, we try to minimize our waste as much as possible.

Reducing the use of plastic in our operations, our garments are supplied to our distributors without the use of additional plastic bags and wrapping.

Our manufacturers all comply with all applicable environmental laws and regulations.

### Our Promise

In addition to being sweat shop free and child labor free, we take social responsibility to the **next level** in everything we do.



