



# Endpoint Security

Protect Your Devices and Their Environment



**The Endpoint Security Module monitors all of your devices and the environment they operate in.** We log all device activity to keep an eye out for suspicious behavior or abnormal patterns. **Unlike other endpoint solutions, we have a full view of your threat landscape** —we secure beyond just endpoints. If one of your other entry points (email, cloud apps, data, etc.) is compromised, **we can stop the attack before it leaks onto your devices.**

## Key Features



### Comprehensive Endpoint Protection

Automatically recognizes and protects all endpoint devices with the Coro Agent installed.



### Advanced Threat Detection

Tackles security issues from WiFi phishing to advanced malware using AI to detect and remediate 95% of incidents automatically.



### Effortless Integration

Seamless plug-and-play setup that integrates smoothly into your existing system, offering real-time insights and protection.



### Scalable Security

Designed for managing a few devices or hundreds, with a modular and scalable approach to ensure your environment stays secure.



### Focus on Business

Allows you to focus on running your business, knowing your endpoints are protected.



### Seamless Integration

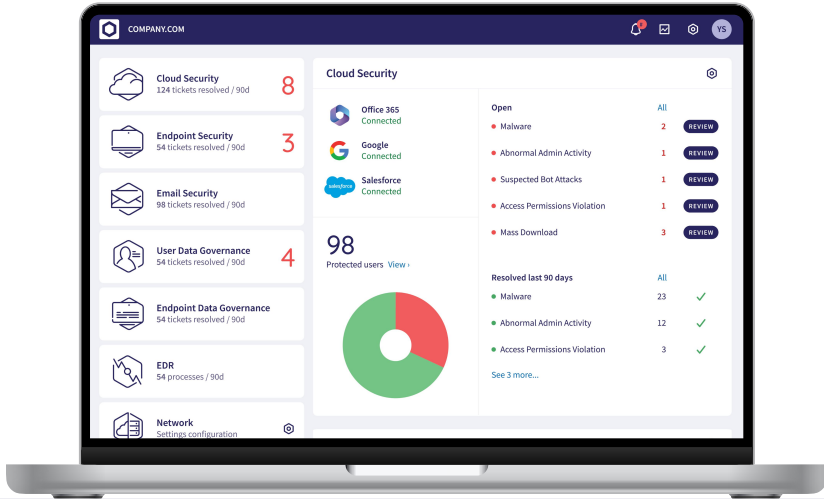
Fits elegantly into Coro's comprehensive security platform. Never worry about integration again.



I don't want to be someone's client, and I don't want a vendor. I don't want to be someone's customer. I need a partner who can help me achieve my goals and Coro has been that.

*Jerry Wilson, IT Director, Memphis Business Academy*





## Modular Cybersecurity

With Coro, customers are able to custom-build their security stack, choosing out of Coro’s 14 security modules, only what they need and what fits their budget. Our approach is flexible and scalable by design, ensuring that as security needs change and budgets grow, customers can easily expand their stacks. Adding modules to their stack is done at the click of a button. Chosen modules snap into place, immediately integrating with other modules.

## Key Features



### Built for Lean IT Teams

Designed to be easy to install and manage. Requires no hardware.



### Professional Support

Swiftly remediate the 5% of malware and phishing alerts that require manual intervention.



### Modular Security

Allows all modules to share one endpoint agent, one dashboard, one data engine.



### Smart Automations

AI automatically detects, flags, prioritizes and remediates the full range of vulnerabilities.

## About Coro

Coro, the leading cybersecurity platform for small and mid-size businesses, empowers organizations to easily defend against malware, ransomware, phishing, data leakage, network threats, insider threats and email threats across devices, users, networks and cloud applications. Coro’s platform automatically detects and

remediates the many security threats that today’s distributed businesses face, without IT teams having to worry, investigate, or fix issues themselves. Coro has been named a leader in G2-Grid for EDR/MDR, received Triple-A grading (AAA) from SE LABS, and was named to Deloitte's Fast 500.

Join the thousands of companies trusting Coro with their cybersecurity!

WATCH A DEMO TODAY

START A FREE TRIAL

