



# **MCKINLEY COUNTY EARLY CHILDHOOD COALITION**

## **2022-2025**

## **ACTIVITIES**

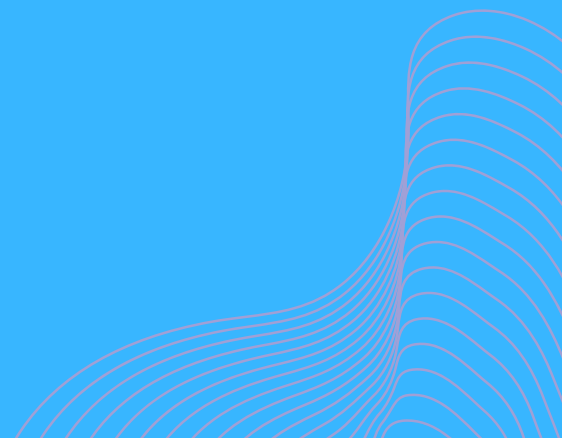
Prepared by Colleen Roan  
Coordinator  
McKinley County Early  
Childhood Coalition  
2025

# The Work

---

This document synthesizes submitted quarterly and yearly reports indicating events and activities McKinley County Early Childhood Coalition has actively initiated and engaged in to support and align supports and services in line with the coalition mission, vision and goals.


Thank you W.K. Kellogg Foundation for the opportunity for MCECC to reflect and share accomplishments and community impact.



# Table of Contents

|  |    |   |    |
|--|----|---|----|
| Coalition Convening,<br>Coordination &<br>Backbone Support | 01 | Family<br>&Community<br>Engagement                            | 02 |
| Community<br>Awareness & Public<br>Outreach                | 03 | Workforce & Parent<br>Education                               | 04 |
| Home-Based<br>Childcare & Provider<br>Pipeline Support     | 05 | Health, Developmental<br>Screening & Referral<br>Coordination | 06 |
| Cultural & Healing<br>Centered<br>Programming              | 08 | Capacity Building,<br>Governance &<br>Sustainability          | 09 |
| A One Pager - What<br>We Have Done                         | 10 |   |    |





# COALITION CONVENING, COORDINATION & BACKBONE SUPPORT

## What MCECC Does

MCECC serves as a backbone organization, convening cross-sector partners, coordinating activities, and maintaining momentum toward shared early childhood goals across McKinley County.

## Key Activities

- Convenes monthly coalition meetings (virtual, hybrid, and in-person when possible)
- Maintains and recruits diverse coalition membership across early childhood, health, education, tribal, nonprofit, and family partners
- Facilitates information sharing, presentations, and collaborative planning
- Conducts one-on-one outreach with providers and partners when group meetings are not feasible
- Submits required quarterly reports, invoices, and compliance documentation

## Strategic Alignment

- Strategic Plan: Implementation & Governance
- Supports all five pillars by ensuring coordination, accountability, and communication

A photograph showing a man in a dark shirt and light pants standing and presenting to a group of people seated in a circle. A whiteboard with handwritten notes is visible on the left. The scene is set in a community meeting or workshop.

# FAMILY & COMMUNITY ENGAGEMENT

## What MCECC Does

MCECC engages families as partners, leaders, and knowledge holders, meeting families where they are and honoring cultural context, language, and lived experience.

## Key Activities

- Hosts and participates in community outreach events, resource fairs, and family gatherings (e.g., Week of the Young Child, Sun-Sational events, arts crawls, community baby showers)
- Facilitates Family Dialogue Circles, informal family discussions, and listening opportunities
- Encourages and supports family participation in leadership trainings, conferences, and convenings
- Provides stipends, childcare support, and flexible engagement options when available
- Builds trust through repeated presence at community events rather than one-time outreach

## Strategic Alignment

- Pillar 2: Family & Community Engagement
- Pillar 5: Policy & Advocacy (through leadership development)



# COMMUNITY AWARENESS & PUBLIC OUTREACH

At NN Kids Day..  
excited to be here!

## What MCECC Does

MCECC increases awareness of early childhood services by acting as a connector and amplifier, ensuring families and providers know what exists and how to access support.

## Key Activities

- Develops and distributes multilingual outreach materials (English, Spanish, Navajo in progress)
- Maintains social media platforms (Facebook, Instagram) to share resources, trainings, and events
- Builds and updates directories of early childhood programs, including EI, PreK, Head Start, home visiting, and childcare
- Shares surveys and referral information at community events
- Participates in county-wide and regional coalitions to expand visibility

## Strategic Alignment

- Pillar 1: Access to Quality Early Childhood Care & Education
- Pillar 2: Family & Community Engagement





# WORKFORCE & PARENT EDUCATION

## What MCECC Does

MCECC strengthens the early childhood workforce and parent leaders by connecting them to culturally grounded education, training, and leadership development opportunities.

## Key Activities

- Coordinates and promotes parenting education programs (e.g., Diné Parenting, Strong Fathers, Abriendo Puertas, TRIBES Parenting Curriculum)
- Supports workforce participation in trainings, facilitator certifications, and peer learning clusters
- Participates in planning and facilitation of Healing-Centered and trauma-informed advocacy trainings
- Shares ongoing workforce development opportunities through listservs and social media
- Partners with organizations to bring trainings into McKinley County whenever possible

## Strategic Alignment

- Pillar 4: Workforce Development
- Pillar 2: Family & Community Engagement

A woman with long dark hair, wearing a white long-sleeved shirt, is sitting and looking down at a small globe. A young girl with dark curly hair, wearing a blue denim dress over a white shirt, is also looking at the globe. The girl is holding a yellow pencil and a piece of paper. In the background, there are colorful toys and books on a shelf.

# HOME-BASED CHILD CARE & PROVIDER PIPELINE SUPPORT

## What MCECC Does

MCECC supports efforts to increase the availability of home-based childcare, particularly in rural, tribal, and underserved communities.

## Key Activities

- Partners with OLE NM, Growing Up New Mexico/Escalones, Wonderschool, and registered providers
- Conducts “Community Conversation”, outreach and awareness for individuals interested in becoming registered or licensed providers
- Identifies barriers unique to McKinley County (background checks, geography, cross-jurisdiction systems)
- Works and collaborates toward creating clear roadmaps and culturally responsive guidance for prospective providers
- Shares provider surveys and outreach materials in Zuni and Navajo communities

## Strategic Alignment

- Pillar 1: Access to Quality Early Childhood Care & Education
- Pillar 4: Workforce Development



A child's hand is shown reaching towards a colorful stacking ring. The background is a soft-focus image of a child's torso and arm. The title text is overlaid on a blue gradient bar.

# HEALTH, DEVELOPMENTAL SCREENING & REFERRAL COORDINATION

## What MCECC Does

MCECC strengthens coordination across health, early intervention, and education systems to improve early identification, referral, and support for children and families.

## Key Activities

- Coordinates and supports developmental screening events
- Coordinates with Early Intervention programs, early childhood programs and community programs serving families
- Facilitates conversations around referral gaps, reporting barriers, and system alignment (i.e. Northwest Early Childhood ECHO Program)
- Engages in planning with NM Family Connects and other coordinated referral approaches
- Shares information on child development, maternal health, and behavioral health resources

## Strategic Alignment

- Pillar 3: Health & Development
- Pillar 1: Access



# CULTURAL & HEALING-CENTERED PROGRAMMING

## What MCECC Does

MCECC intentionally integrates culture, language, and healing-centered practices as foundational—not supplemental—to early childhood systems.

## Key Activities

- Hosts or partners on cultural learning experiences (weaving, loom building, storytelling)
- Supports Indigenous language preservation efforts and language nest learning
- Participates in Indigenous-led convenings and symposiums
- Frames engagement through kinship, belonging, and intergenerational learning
- Honors community rhythms, seasons, and cultural priorities in scheduling and planning

## Strategic Alignment

- Pillar 2: Family & Community Engagement
- Pillar 5: Policy & Advocacy
- Cross-cutting equity and cultural integrity commitments



# POLICY, ADVOCACY & SYSTEMS ALIGNMENT

## What MCECC Does

MCECC builds capacity for community-informed advocacy while aligning local work with county, tribal, and state systems.

### Key Activities

- Participates in Early Childhood Day at the Roundhouse and legislative engagement
- Attends New Mexico Early Childhood Education and Care Department (ECECD) convenings, tribal monthly meetings, and statewide learning sessions
- Coordinates with initiatives such as 100% McKinley County
- Awarded the State of New Mexico Local Early Childhood Systems Building Grant since 2022
- Completed a Community Needs Assessment in 2022 and Strategic and Evaluation Plan in 2023 with NM ECECD grant funds
- Supports family and provider voices in systems conversations

### Strategic Alignment

- Pillar 5: Policy & Advocacy
- Pillar 2: Family Leadership





# CAPACITY BUILDING, GOVERNANCE & SUSTAINABILITY

## What MCECC Does

MCECC strengthens its internal capacity to sustain long-term impact through governance development, fiscal planning, and partnership building.

### Key Activities

- Explores and negotiates fiscal sponsorship arrangements
- Develops governance frameworks and shared leadership practices
- Engages in equity, consensus decision-making, and leadership development trainings
- Seeks and applies for funding to sustain coalition operations
- Builds documentation, reporting systems, and shared tools

### Strategic Alignment

- Cross-cutting: Implementation, Accountability & Sustainability



## A ONE PAGER - WHAT WE HAVE DONE

**Coalition Convening & Backbone Support** - The McKinley County Early Childhood Coalition (MCECC) serves as a backbone organization, convening cross-sector partners to strengthen early childhood systems across McKinley County. We coordinate collaboration, share information, and support collective action that aligns services, resources, and community voice.

**Family & Community Engagement** - MCECC engages families as partners and leaders by meeting them where they are—at community events, cultural gatherings, and trusted spaces. We center family voice, lived experience, and cultural context to ensure early childhood systems reflect what families value and need.

**Community Awareness & Outreach** - MCECC increases community awareness of early childhood programs and services through outreach, events, and multilingual materials. We connect families and providers to accurate, up-to-date information so children can access care, education, and supports as early as possible.

**Parent & Workforce Education** - MCECC supports parents, caregivers, and the early childhood workforce by connecting them to culturally grounded education, training, and leadership development opportunities. We partner with local and statewide organizations to bring parenting programs, facilitator trainings, and peer learning to McKinley County.

**Home-Based Child Care & Provider Support** - MCECC works to expand access to home-based child care by supporting individuals interested in becoming registered or licensed providers. We collaborate with partners to reduce barriers, share clear pathways, and promote child care options in rural, tribal, and underserved communities.

**Health, Development & Referral Coordination** - MCECC strengthens coordination across health, early intervention, and early childhood systems to support early screening, referral, and care. We help bridge gaps between services so families can navigate supports more easily and children receive help early.

**Cultural & Healing-Centered Programming** - MCECC integrates culture, language, and healing-centered practices into early childhood systems. Through partnerships and community-led activities, we support intergenerational learning, cultural identity, and belonging as essential foundations for child and family wellbeing.

**Policy, Advocacy & Systems Alignment** - MCECC builds capacity for community-informed advocacy by connecting families and providers to local, tribal, and state systems. We participate in policy conversations, convenings, and collaborations to advance equitable early childhood policies and funding.

**Capacity Building & Sustainability** - MCECC strengthens coalition capacity through governance development, partnership building, and sustainability planning. We seek funding, technical assistance, and shared leadership approaches to ensure long-term impact and accountability to the community.