



BOXELDER DESIGNS

INFORMATION PACKAGE

EXPECTATIONS

We follow a streamlined process that provides our clients with exceptional results in a timely manner. With full access to our team, our clients will not only get results quickly, they'll also get 3D renderings beyond their expectations.



48-HOUR ESTIMATES

Our portfolio manager will deliver a quote within 48 hours of receiving a request



DIRECT CONTACT

You will have direct messaging with the designer to ensure all your needs are met.



DEDICATED TEAM

You will be assigned to our designer who will work on all your projects and know your requirements by heart.



CLOUD ACCESS

All project info and deliverables are stored securely on the cloud through OneDrive



PROJECT PRICING PACKAGING

You can choose one of the packages below or if you have a large-scale project, we offer custom pricing as well. Packages can also be separated into exterior or interior only.

We offer discount pricing for designers and contractors.

BASIC

1-2 exterior views

2-3 interior views
per space

1 additional set
with variations

STANDARD

4-6 exterior views

5-6 interior views
per space

2 additional sets
with variations

PRO

custom number
of views

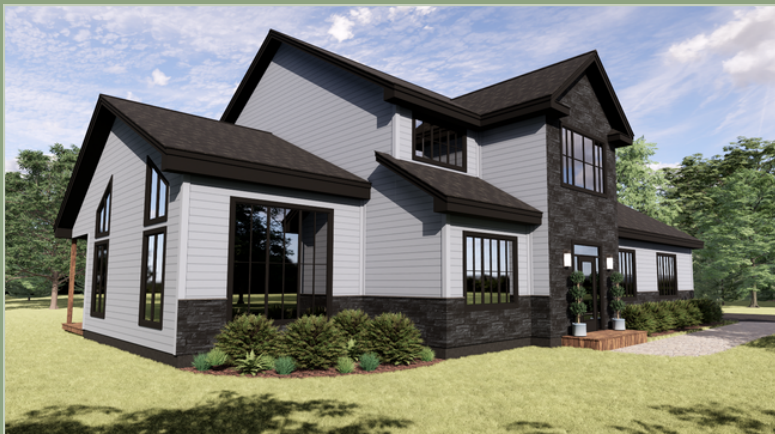
3D animation
video

3 additional sets
with variations



EXTERIOR VIEWS

Below are some examples of views available for exterior renderings. The number and type of exterior views depends on what package is chosen.



INTERIOR VIEWS

Below are some examples of views available for interior renderings. The number and type of interior views per space depends on what package is chosen.



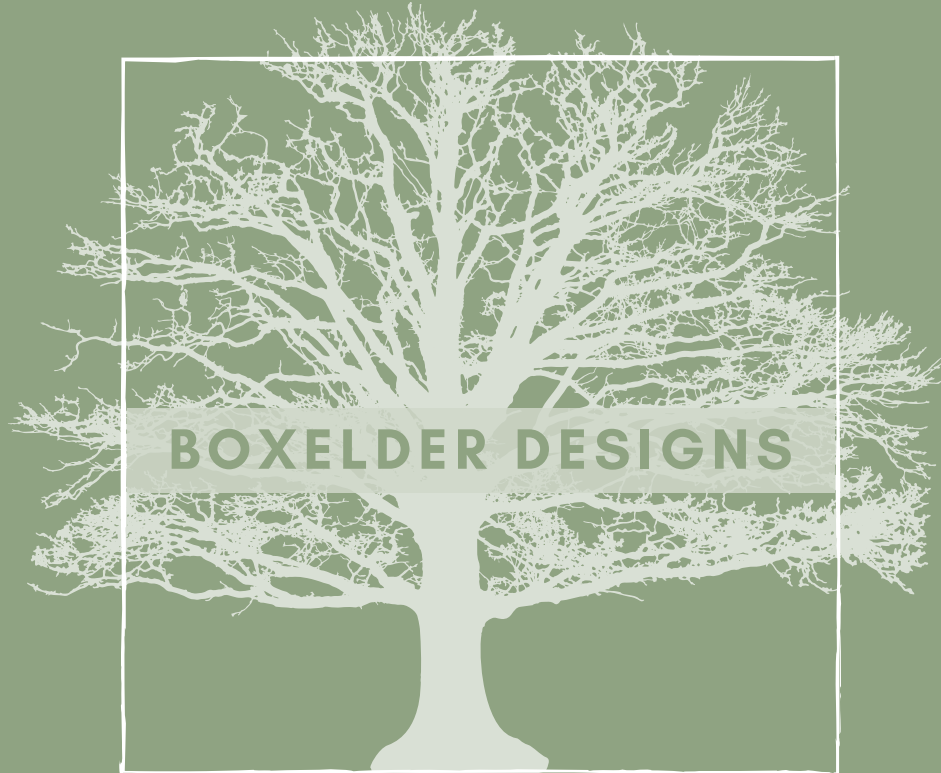
BULK REQUEST

We offer discount pricing on bulk orders.
Contact us today to find out how this will work for you.



READY TO GET STARTED?

Our team is ready to assist you with your rendering needs.



[click here](#) to request a quote today!