

**SOLD**



**FOR SALE**

**LISTING SERVICES**

**RE/MAX EXECUTIVE**  
[www.executiveagent.net](http://www.executiveagent.net)

**STREAMLINE-  
SAVE TIME**

**SAVE MONEY**

**PROVIDE GREAT  
CLIENT SERVICE**

Options

Sign, Riders, Lockbox Install

Marketing Material Delivered

Lighted Sign Posts

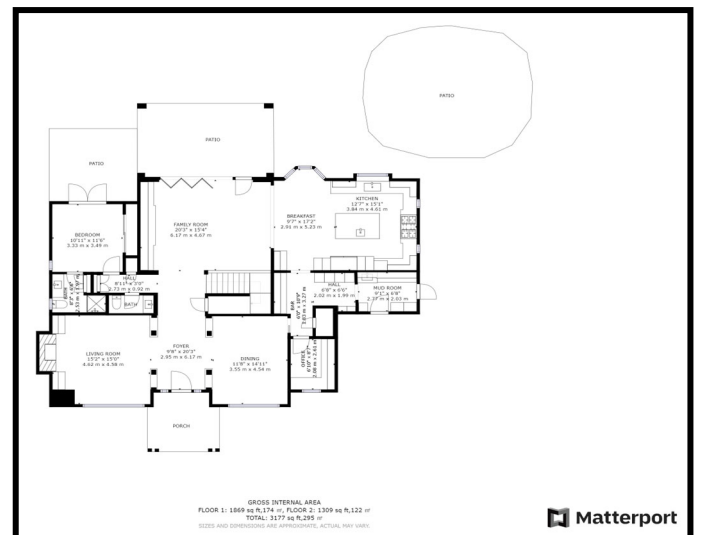
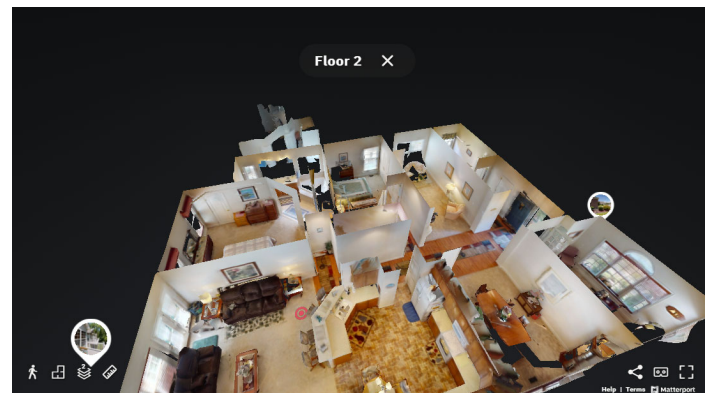
Matterport Tours with Floorplans

**RE/MAX**  
**Executive**

**RE/MAX EXECUTIVE LISTING SERVICES**

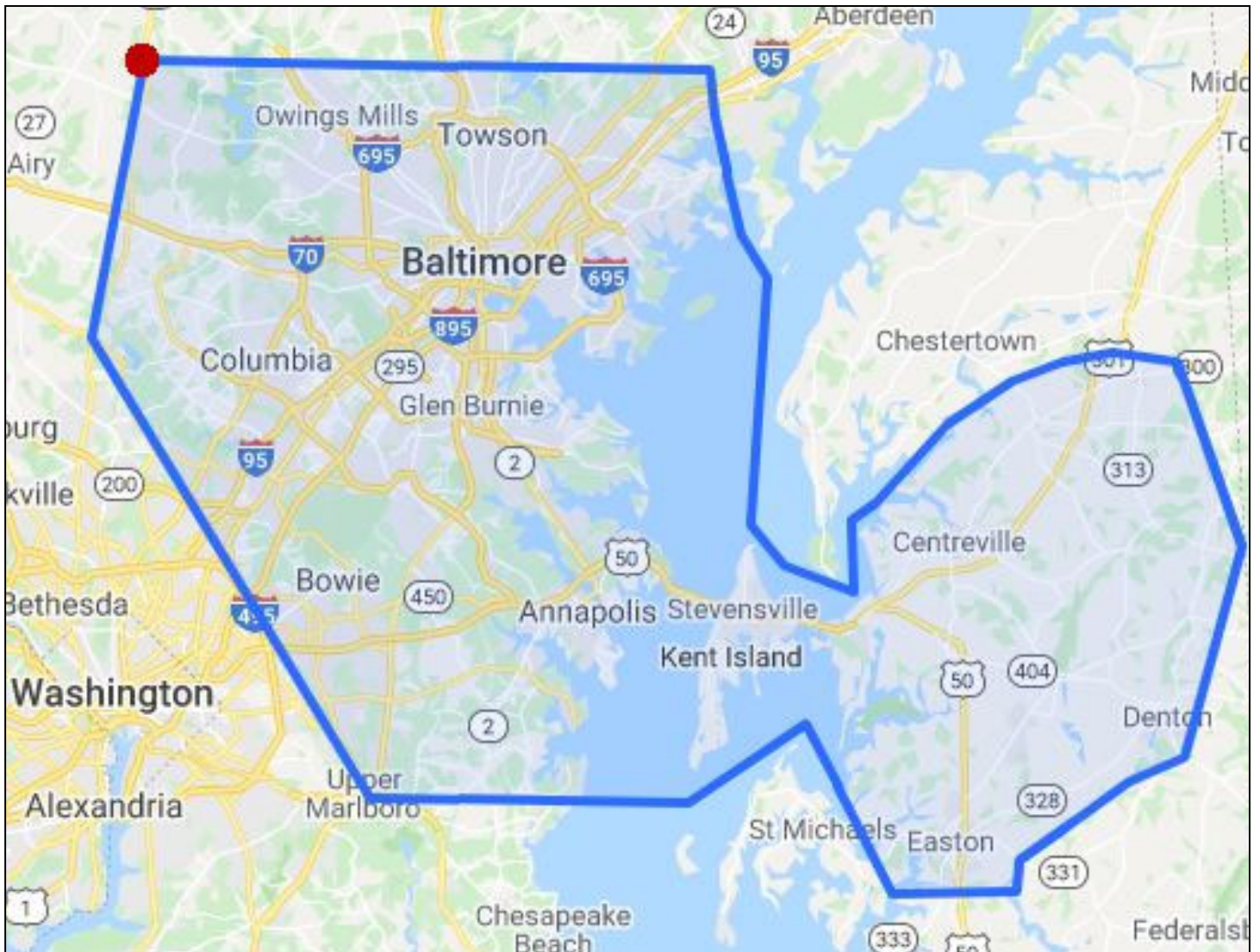
Simplify your listings and your life by taking advantage of our listings services program.

- **Submit orders via the online order link** found at [www.executiveagent.net](http://www.executiveagent.net) — Listing Services Tab
- Choose to have a sign, flyer box, rider, and lockbox installed or picked up, or add a Matterport 3D tour.
- **Deliver your signs, riders and lockboxes to any office**, or let us know where your signs are located by at [service@executiveagent.net](mailto:service@executiveagent.net) — we will arrange to pick them up from current sign company
- **Label your lockboxes** in some way when you drop them off.
- Leave details on key location or **seller can put the key in**, using a contractor code to open the box.
- **Matterport 3D Tours** are also available and come with a full floorplan with room dimensions. Makes listing entry much easier. Coordinate for a sign install the same day and your **sign install is free!**



## RE/MAX EXECUTIVE LISTING SERVICES PROGRAM

# STANDARD SERVICE AREA revised 08/01/2021



### PRICING

Effective February 1, 2024, fees will be **\$35** per trip in the primary service area and **\$55** per trip outside of that area. Trips past Cambridge and Frederick will be **\$75**.

**Have your sign, riders, lockbox and brochures delivered in one trip for one fee!**

**Matterport Tours \$200 and include floorplan and sign install if one trip.**



# RE/MAX Executive