

# REGINA RETRIEVER CLUB

## Training Ground Rules

Effective Date: March 9, 2026

Last Revised: New



### **Purpose:**

These “ground rules” have been created to communicate expectations for sharing and stewardship of the RRC grounds by members and guests.

**Use of Grounds:** Members may use club grounds for training, exercising, and hosting sanctioned events. Unauthorized commercial or competitive use is prohibited unless approved by the RRC Board.

Guests are welcome BUT they must be accompanied by a current member. Please encourage guests to join the club and contribute to the future maintenance and development of the club and the grounds. Guests who visit more than 2-3 times in a season are expected to buy a membership.

Please stay within property boundaries at the pit and on the City lease unless special permission has been confirmed through the RRC Board. We have been directed by City officials to stay within our land lease area (see attached map). Access to the property is to be through gates provided for the purpose. Member violation of these conditions could result in termination of RRC’s land lease and may result in suspension of membership.

**Safety First:** Please practice safe gun handling and control your dog. The club’s insurance covers activities in the pursuit of dog training – it does not cover the use of live ammunition – please restrict the use of guns to starter pistols or shotguns with poppers only.

**Security:** Please ensure gates and the club storage container are closed and locked if you are the last one leaving the pit. When at the City land lease, please lock the gate after you enter, while you are using the property and when you leave.

**Stewardship:** Please stay on established trails. ATVs are permitted for the purpose of dog training only – no joy-riding. Pick up surveyor’s tape and any waste (i.e. training birds, dispensed shells and cases, cans, paper, cigarette butts, etc.) even if it was not yours. Kindly clean up after your dog in high traffic areas (e.g. points and shorelines handler run from at the pit). Wire surveyor’s flags can present a hazard to dogs if left at the grounds – please remove when you are done and do not leave in place to mark permanent blinds. Finally, if you find a hazard, remove it if possible or mark it clearly with flagging tape and let a Board member know so the problem can be addressed.

**Etiquette:**

In some instances, it can be difficult to set up more than one training group without causing interference from loose dogs, whistles, calls and guns, especially at the pit. If you arrive after others have started training, please introduce yourself and ask those who are on the grounds ahead of you if they mind if you set-up in an adjacent area and/or if you can join their training group.

Members are encouraged to have a “plan B” in case your initial training plan will interfere with others. If you are “first to the grounds”, please be prepared to accept other trainers into your training session and/or help them establish their own session in an area that will not cause interference.

Sanctioned events and classes take precedence over independent member activities. If possible, regular training groups are asked to post the intended location and timing of sessions 8-12 hours in advance so other members can plan accordingly.

In general, members are expected to treat one another with courtesy and respect while using the grounds.

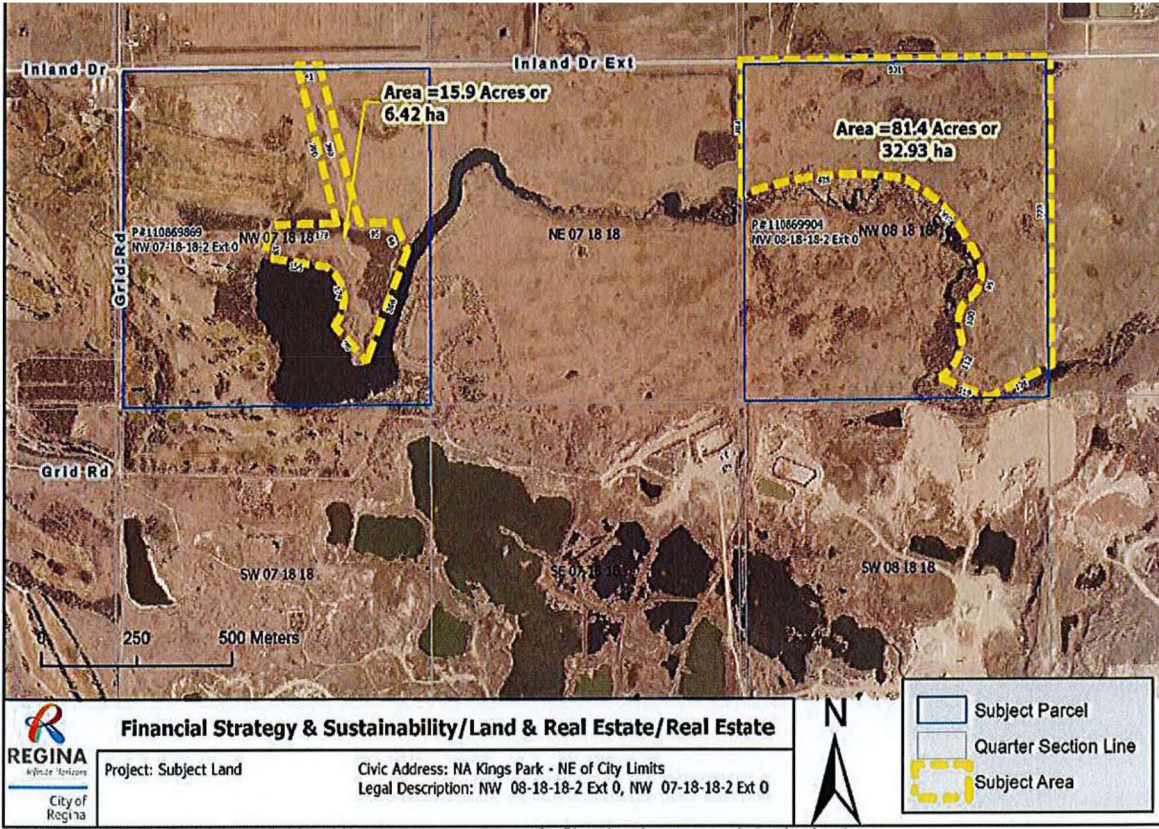
**Humane treatment of animals:**

Physical abuse of a dog on the grounds will not be tolerated.

Use of live birds for training is not allowed due to potential breach of cruelty to animals provisions under the Criminal Code of Canada.

*Thanks for abiding by these ground rules and have fun!!*

# Appendix 1: City Land Lease Area and Pit Property Maps



2021/2019 A-18-1 Real Estate at Kings Park Man 19 Air mvd

Any Dimensions shown are approximate values in metres

