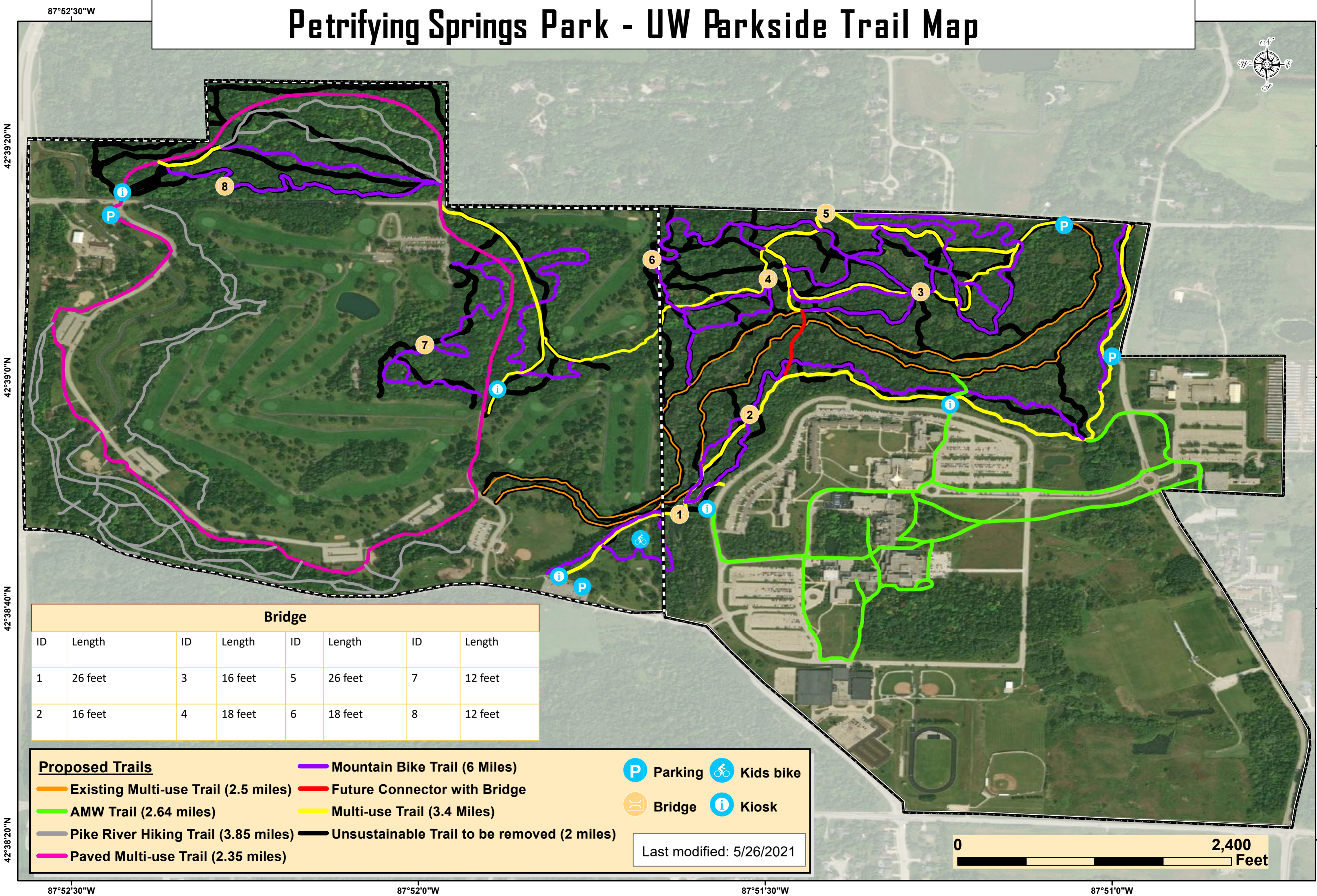


Petrifying Springs Park - UW Parkside Trail Map



42°38'20"N
42°38'40"N
42°39'00"N
42°39'20"N

87°52'30"W
87°52'00"W
87°51'30"W
87°51'00"W

Bridge							
ID	Length	ID	Length	ID	Length	ID	Length
1	26 feet	3	16 feet	5	26 feet	7	12 feet
2	16 feet	4	18 feet	6	18 feet	8	12 feet

Proposed Trails

- Existing Multi-use Trail (2.5 miles)
- AMW Trail (2.64 miles)
- Pike River Hiking Trail (3.85 miles)
- Paved Multi-use Trail (2.35 miles)
- Mountain Bike Trail (6 Miles)
- Future Connector with Bridge
- Multi-use Trail (3.4 Miles)
- Unsustainable Trail to be removed (2 miles)

P Parking i Kids bike
B Bridge i Kiosk

Last modified: 5/26/2021

