

| BEDROOM PROJECT |

Nordic with a twist

EMBRACING LIGHT AND SPACE, WITH A WARM SCHEME AND SIMPLE FURNITURE, GAVE BEN AND GABY THE LOFT BEDROOM THEY WANTED



'We feature a "hot property" in *A Place in the Sun* and I saw a similar look in a high-end house in Oléron, France,' Ben explains. 'Interior lighting and oversized handles add to my design.'

Half-moon handles, £30 each, HomacStore on Etsy. Wardrobes in Ammonite modern eggshell, £35.50 for 75ml, Farrow & Ball

HOME NOTES

WHO LIVES HERE?

Ben Hillman with his wife Gaby, and their two young daughters.

THE PROJECT

Converting an existing loft room into a main bedroom en suite, in a semi-detached 1930s house in West Sussex.

TOTAL COST
£5,050

“Presenting the **TV SHOW** and seeing so many properties abroad **INSPIRED** ideas for our bedroom”

PENDANT LIGHTS
Hanging them either side of the bed saves space and makes a design statement



BEFORE



Ben and Gaby Hillman had always planned to convert their home's existing loft space into their en-suite bedroom, but with a whole house to renovate and extend, the project was pushed down to the bottom of the list. Once savings were in place, they were ready to start.

'The loft room was a multi-room, but with no real purpose – the girls would play up here, I had my office and we stored stuff,' says Ben, a presenter on Channel 4's *A Place in the Sun* and an interior designer from ITV's

60 Minute Makeover (@benhillmantv). 'It had been built with the original house and didn't have a door or dormer and felt hemmed in without a visual connection to the outside. Our goal was to create a lovely light bedroom with a feeling of space.'

Without question, Ben and Gaby needed a dormer, which, as well as adding 6sq m floor space, created volume, head height, light and views.

'Fortunately, the start date tied in with a break from filming, so I had time to take over the building work from second fix – making fitted furniture, fitting lights, skirting boards



TOP LEFT 'We wanted to introduce a feeling of space to our bedroom. I kept the layout open-plan so the light travels between the south and north aspects. The colour scheme is low key with fitted furniture painted white-grey with certain pieces adding pops of warmth.'

Wardrobes made with Pax frames, from £75. Ikea. Setting Plaster modern emulsion is a similar wall colour, £64 for 2.5ltr, Farrow & Ball

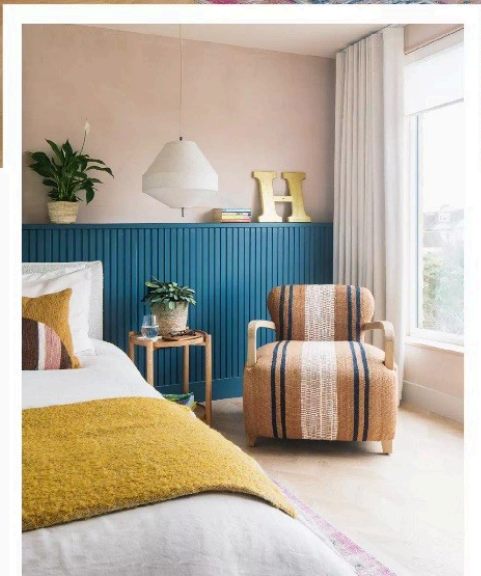
ABOVE 'Where the ceiling slopes away, it created a nook that was ideal for Gaby's dressing table, which I made with MDF and oak veneer. The natural light is good here and we often turn on the wall light in the evening because it emits a nice glow.'

Original BTC Hector wall light, £199, Holloways of Ludlow. Taga corded stool, £169.99, La Redoute. Vintage rose cushion cover, £22, Cox & Cox



“
 Seeing the bed as we
 come into the room
 makes a **FANTASTIC**
 visual **STATEMENT**
 ”

**LUXURY
 VINYL FLOOR**
 The Belgian click system
 goes down easily and can
 be removed and reused
 if you move



LEFT The repetition of circles in the bedside table, pendants, cushions and chair bring a softness to the angular room. 'I love the curved chair. It's a lovely feature as well as adding a pop of warmth,' says Ben. Aviator armchair, £649, Atkin and Thyme. Listerby side table is similar, £115, Ikea. Solara medium light, £209, Lights & Lamps. Similar distressed gold letter, £750, RW Norfolk

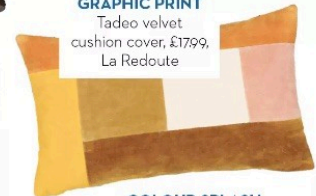
ABOVE 'The new window is made with toughened glass and set as low as possible while still meeting Building Regulations. A favourite detail is the oak reveal I made that's given the window a picture frame quality.' Bijou Linen Oatmeal wave curtains, £481; Atlas White roller blind, £225, both Blinds2go. Liora rug, £229, Dunelm. Gizeh Twist flooring, £54.95sq m, Floorify

FEATURE: JANE CRITTENDEN STYLING: HARISHA TAYLOR PHOTOGRAPHS: JAMES FRENCH

and so on – alongside a plumber and electrician,' says Ben. With the staircase already in place, Ben designed the en suite within the dormer above the family bathroom to make plumbing easier. He toyed with the bed facing the window with a partition wall behind for a walk in wardrobe. 'On the plans, there wasn't quite enough room and the layout felt less open and more clunky,' he says. 'Whereas coming into the room and seeing the bed in front creates a pleasing visual.' For a light and calm space, Ben took a muted approach to interiors with plans for oak tones, linens and Farrow & Ball's Setting Plaster on the walls. But, impressed with the

plasterers' work, he changed his mind. 'I loved the silky pink sheen finish that had texture and tone, so I left the walls bare,' he explains. 'I then painted the wardrobes a soft white grey so they fade back with contrasting deep blue wall panelling to put the focus on the bed.' The room infuses hints of mid century modern in the bedside tables, linen lights and bouclé bed; lightweight curtains and pale oak flooring nod to Scandi design. 'The bold abstract art came last and draws the colour scheme together,' says Ben. 'We're really pleased with the dormer and big window, we love all the light and feeling of space – it's a real treat to have our own hideaway.'

GRAPHIC PRINT
 Tadeo velvet cushion cover, £1799, La Redoute



COLOUR SPLASH
 Alright Petal paper print (unframed), 80x80cm, £79, Find Your Pink



FLUTED LINEN
 Folia Scalloped pendant, £359, Lights & Lamps

**STYLE
 MUST-HAVES**

INSPIRED BY BEN AND GABY'S BEDROOM

BOLD BLUE
 Napoleon Blue paint, £55.95 for 2.5ltr, Annie Sloan

OAK TONES
 Pobla mango scalloped side table, £98, Oliver Bonas

YELLOW ACCENT
 Rajput ribbed throw in Mustard, £11.99, Homescapes