

# A TASTE *of the east*



## SITTING ROOM

Shelves display the couple's beloved objects collected while abroad.

Joinery, designed by Bean Interiors; made by The Workshop Brighton. Alwinton sofa upholstered in Stripe Bengal in Indigo, Sofas & Stuff

How do you give a country barn hints of elegant Eastern style? The couple who live here after moving back from Honk Kong asked designer Emma Capron for help

FEATURE JANE CRITTENDEN | PHOTOGRAPHY JAMES FRENCH | STYLING MARISHA TAYLOR

### SITTING ROOM

Window seats enclose this end of the room behind a pair of new nib walls.

Floral cushions made by Malthouse & Summer in Sanderson Flower Pot Brick fabric, Bean Interiors

### ENTRANCE HALL

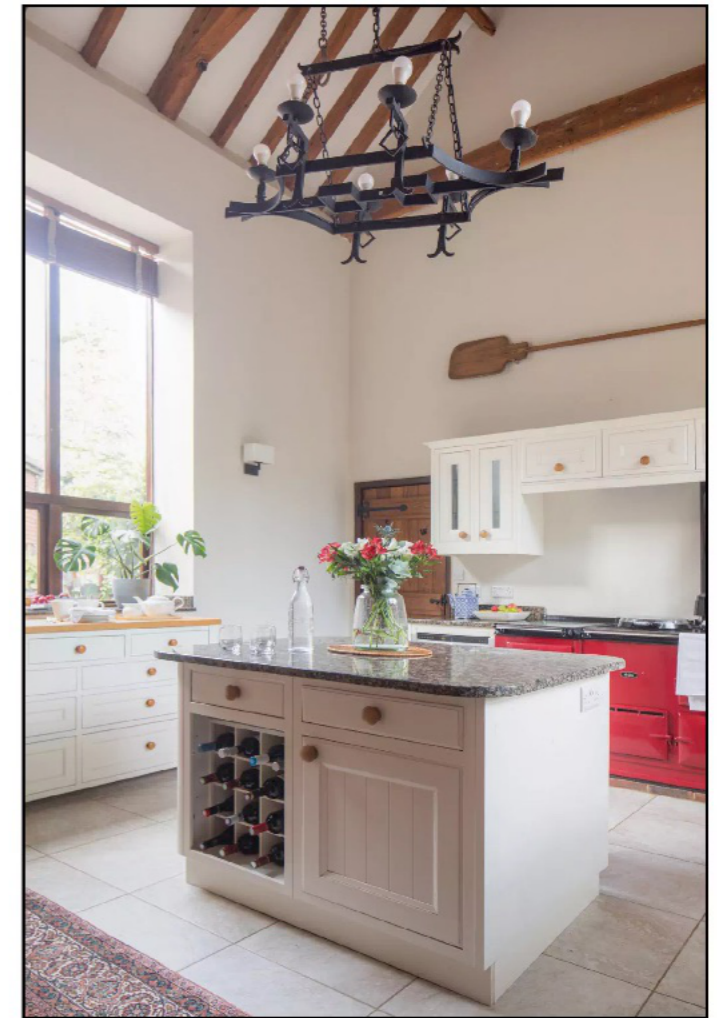
The pretty cabinet from the couple's travels faces the front door.

Try the Apollonia cabinet, Wayfair. Bridgewater mirror, William Wood

### CLOAKROOM

The fun wallpaper pattern nods to the koi carp in Gail and Len's pond.

Osborne & Little Derwent wallpaper in W5796/01, Bean Interiors. Wall panelling in Charleston Gray, Farrow & Ball



## HOME TRUTHS

**THE PROPERTY**  
A detached and extended barn

**ROOMS** Sitting room, kitchen/dining area, snug-office, playroom, cloakroom, three bedrooms, three bathrooms

**LOCATION** Sussex

### WHAT WAS THE PROPERTY LIKE TO START WITH?

Gail and Len were living in Hong Kong and planning to retire back in the UK after 35 years abroad. While en route to the airport after visiting family in Sussex, they viewed this barn on a whim. The roots are Georgian and an extension was built some 20 years ago adding a long sitting room with views to the garden and a large main bedroom suite above.

**HOW DID YOU COME TO BE INVOLVED IN THE PROJECT?** Gail picked up a copy of *25 Beautiful Homes* at the airport and read an article on one of my previous projects and saw that I was local. Later when they showed me around, I became aware this was only the

second time they'd seen the barn. I followed up by suggesting questions to get them thinking about how they might live in the space.

**WHAT CHANGES DID GAIL AND LEN WANT TO MAKE?** They wanted a bigger utility room, more storage and they were unsure how to use the space effectively in the 9.5m-long sitting room. They also wanted to incorporate their collection of chinoiserie ceramics and ornate Asian furniture.

**HOW DID YOU RESPOND TO THEIR BRIEF?** I extended the utility room and designed new joinery. Gail and Len like playing bridge so I added two nib walls to the end of the sitting room to create a seating nook. Since



### DINING AREA

A heavyweight curtain fabric with a textured embroidery finish helps keep the draughts out.

Curtains made by Malthouse & Summer in Clarke & Clarke Sawley in Natural Fo601/04, Bean Interiors. Keating oak table; Ercol Windsor Penn chairs, all Furniture Village

### KITCHEN

Warm white decoration freshens up the space in a tone that complements the exposed brick and wood beams.

Walls in School House White, Farrow & Ball. The Wakefield ceiling pendant light, John Lewis & Partners, is similar

**MAIN  
BEDROOM**

The south-facing balcony overlooking the garden is where Gail and Len like to have their morning coffee.

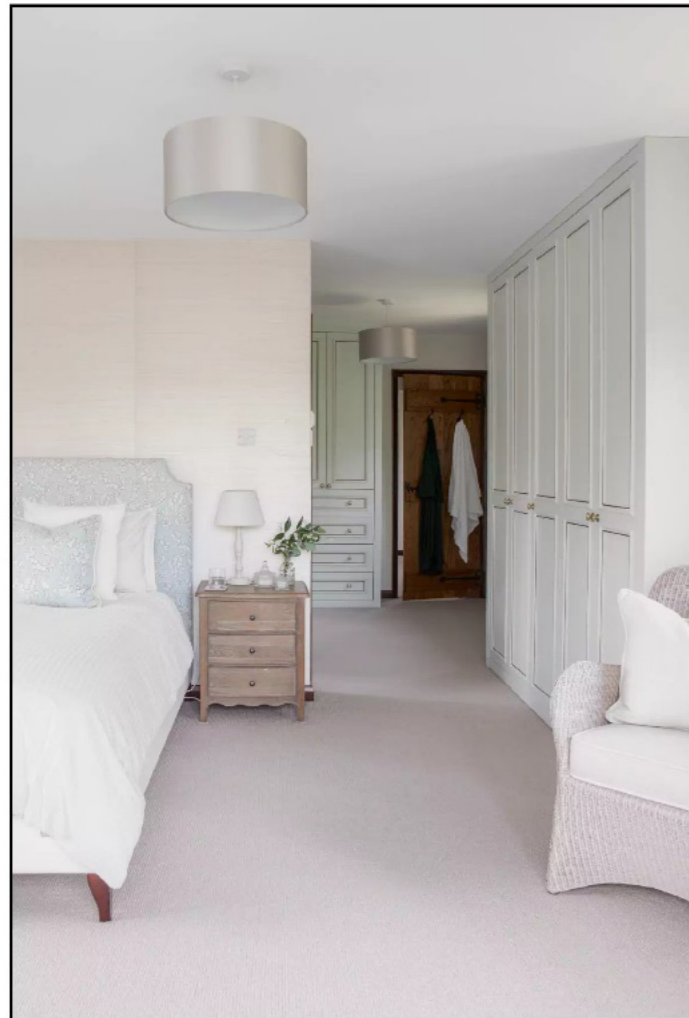
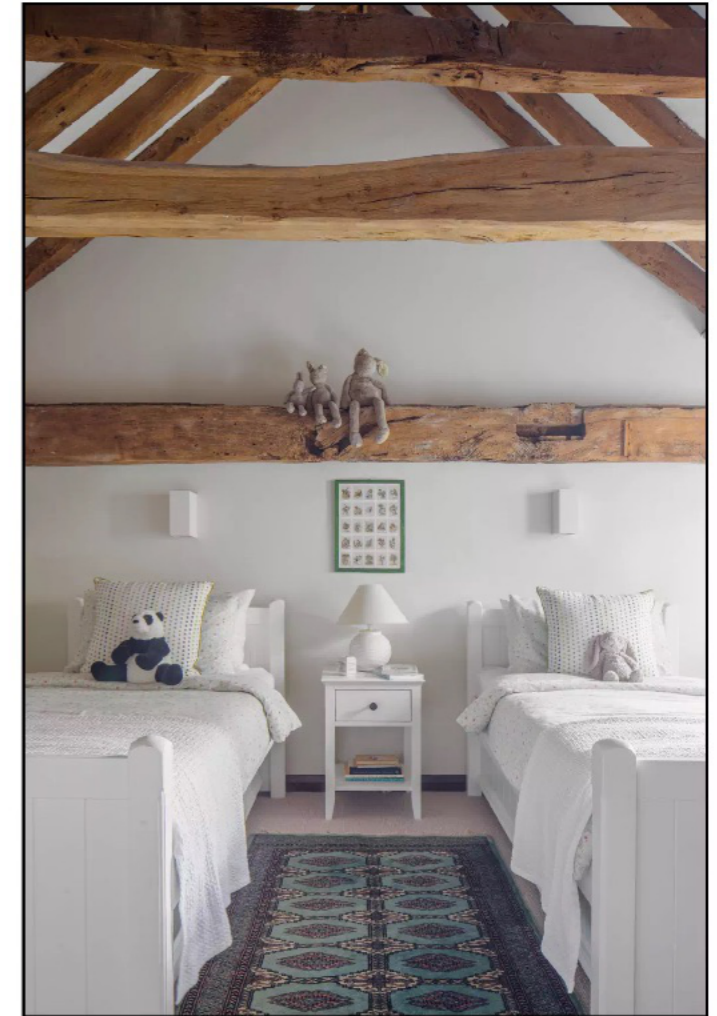
'Pale blues and textured wallpaper create a serene feel,' says Emma.

Cushions and headboard made by Malthouse & Summer in Villa Nova Aylin Eucalyptus V3262/01 fabric; Designers Guild Ashby wallpaper in Silver 0513/03, both Bean Interiors

**BATHROOM**

Tadelakt walls make the space waterproof and have a sheen appearance that complements the textured beams.

Round bronze mirror, Perch & Parrow, has this look. Try the Austin gloss wall-hung vanity, Bathroom Mountain



the cloakroom is the room all guests use, I suggested a statement wallpaper, which they weren't sure about at first, but now love!

**TELL US MORE ABOUT THE JOINERY.** I designed cupboards with a design hierarchy. For example, the functional utility has plain Shaker doors, the sitting room shelves are oak, while the main bedroom wardrobes are more ornate and painted aqua with gold detailing.

**HOW DID YOU CHOOSE THE COLOUR PALETTE?** Blues and warm tones were inspired by the couple's collection of blue and white ceramics and dark antique furniture, as well as the wood and brick details in the barn. I infused hints of Eastern style, such as

the blossom fabric in the main bedroom and the cloakroom's koi carp wallpaper. In the older parts of the house where it's darker, I bounced light with walls in Farrow & Ball's School House White.

**WHAT'S YOUR ADVICE FOR CREATING A SUCCESSFUL SCHEME?** For me, the joy and privilege is in unlocking the clients' life journey and creating a home that tells their story with unique talking points inspired by their belongings and treasures. Gail and Len were abroad during most of the six-month project but presenting design concepts and having discussions by video call worked for us – they were blown away when they moved in. 🍷

[beaninteriors.co.uk](http://beaninteriors.co.uk)



**BEDROOM**  
This room has been created for the couple's grandchildren. The rustic character comes from the beams, while the neutral palette will last as the children grow. Charterhouse single trundle beds, Aspace. The Tierra ceramic table lamp, Dunelm, is similar

**BEDROOM**  
The intricate piece of art from Gail and Len's travels is made with delicate gold thread that ties in with the textiles. Fairford Soft White chest of drawers, The Cotswold Company, is similar