

Modern revival



Bianca and Christos Michaels' Edwardian semi has had a thoroughly contemporary makeover – and it now has the most wonderful mid-century modern look

FEATURE JANE CRITTENDEN | PHOTOGRAPHY FRENCH + TYE

LIVING AREA
 The fluted half wall zones this space from the adjacent kitchen and dining area. 'I love the tone of the wood as it fits in with the mid-century modern aesthetic,' says Bianca. Knoll's Bertoia Diamond armchair, £1,188, Innes. The Vintage three-arm Arc floor lamp, £790, Pamono, is similar. Try the Jiraya rug, £525, La Redoute

HOME TRUTHS

THE PROPERTY

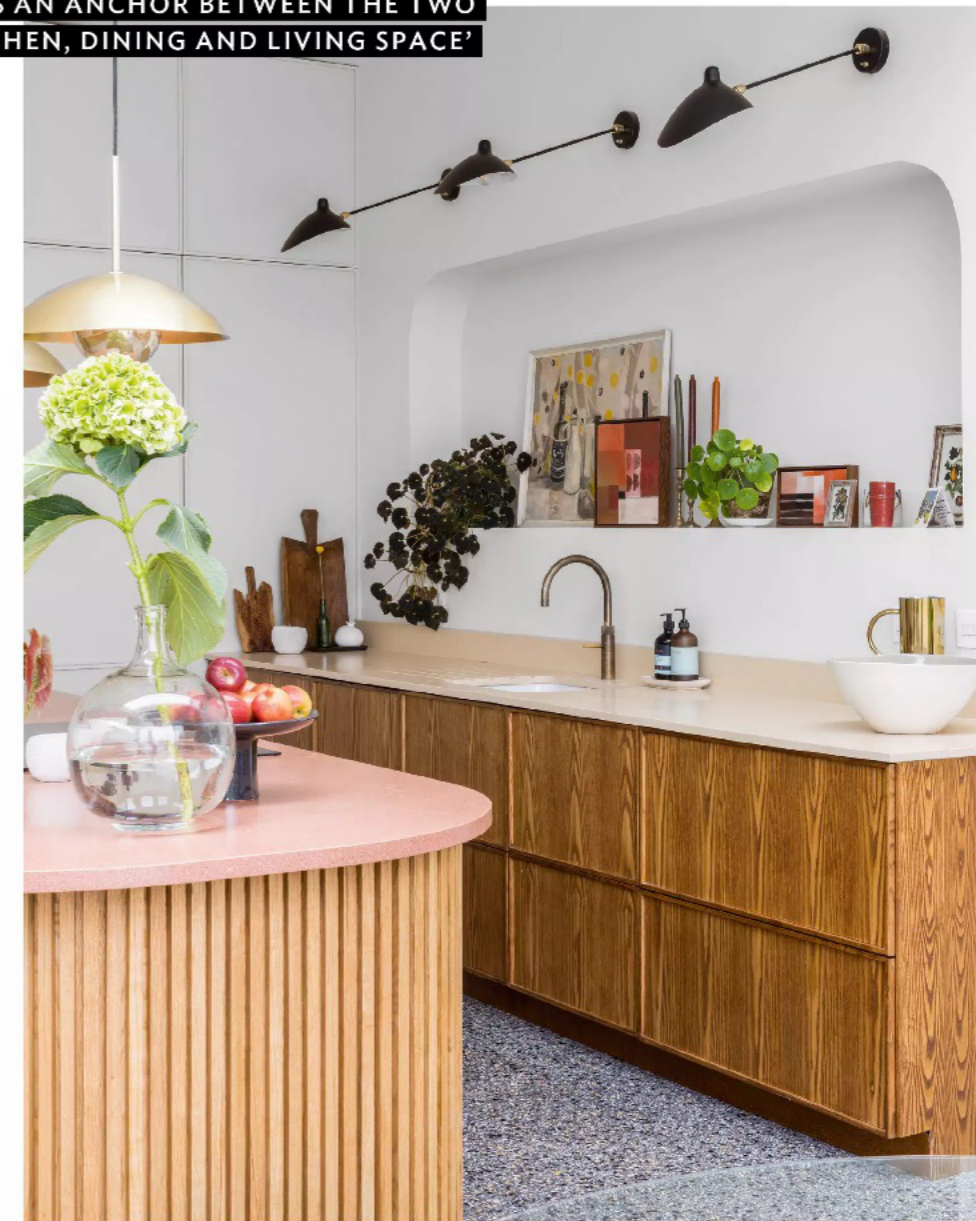
Double-fronted Edwardian semi

ROOMS Sitting room, kitchen-diner/living area, study, den, cloakroom, four bedrooms (three en suite), bathroom

LOCATION North London



'A FAVOURITE FEATURE IS THE TALL WINDOW AT THE BACK THAT ACTS AS AN ANCHOR BETWEEN THE TWO LEVELS IN OUR KITCHEN, DINING AND LIVING SPACE'



Moving to a property a few roads along came about after Bianca Michaels and her husband Christos decided that renovating their house didn't make financial sense. 'I was looking for a project,' says Bianca, who used to renovate and run restaurants. 'I liked the idea of opening the front door and being drawn in towards the garden and beyond.'

The Edwardian house's original stepped layout meant a wall in the hallway blocked off the back, which had been extended into two

rooms on two levels. Despite the odd arrangement and lack of flow, Bianca loved the outlook with views of Alexandra Palace.

'Our conundrum was how to create the front-to-back visual link and connect the two spaces in the stepped extension,' she says. 'My architect, Matthew Giles (matthewgilesarchitects.com) reworked the layout and was great for advice on materials and interiors along with his colleague Lu Bai.' Matthew spent two years working on the project. During the renovation, dormer windows improved the

KITCHEN-DINER/LIVING AREA
Bianca wanted cabinetry that looked more like furniture in this open-plan space so a friend who has a joinery business made these units.

Cabinets, Union Bespoke. TE100 terrazzo island worktop; TE098 terrazzo sink worktop, £8,160, both Diespeker & Co. Knoll Platner table, £3,948, Skandium. Casquette ceiling light, £330; Straight Arm sconce wall lamps, £163 each, all Swivel

'I CHOSE PAINT FROM A COMPANY THAT DOES DIFFERENT TONES OF THE SAME WHITE COLOUR SO I COULD VARY IT ACCORDING TO THE LIGHT IN DIFFERENT ROOMS'



MAIN BEDROOM
All the storage pieces, including the wardrobes, are bespoke so they would fit under the eaves. Large Berber rug in Cream, £575, Loaf, is similar. Tapestry flower velvet cushion, £120, Designers Guild, is a good alternative

main en suite and the stairs were realigned to join the original staircase. The couple's daughters, Aurelia, 15, Georgia, 13 and Delphi, 11, each have a bedroom on the first floor and a bathroom. In the extension, flipping the kitchen and sitting room around, relocating the steps and adding glazing transformed the space.

'What's lovely is while the back is modern, the rest of the house is still Edwardian,' says Bianca. 'A continuity of materials brought the two together.' Bianca's Italian heritage inspired terrazzo and

warm, earthy Mediterranean colours in terracotta and stone. Dark grey terrazzo tiles in the kitchen carry through to the hallway.

Around the house, terrazzo and vintage furniture repeat in bathrooms, highlighted by brass fittings. Walls are painted in tones of stone. 'Friends say our home feels Mediterranean,' says Bianca. 'I'm so pleased with the design, particularly the tall window at the back. It's an anchor between the two levels and frames the outside world, which I connect with as soon as I open the front door.' 25