

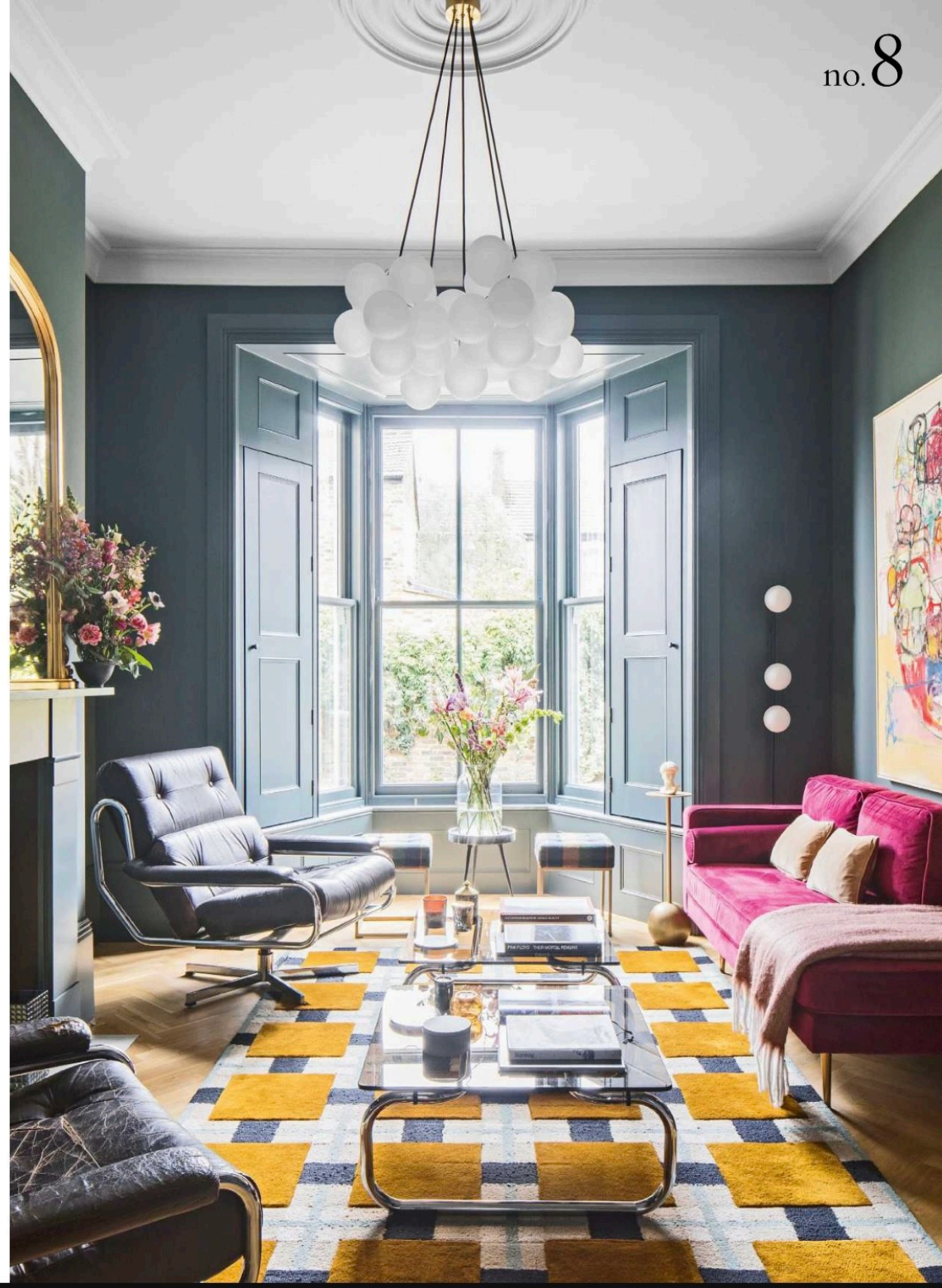
Passion project

WORDS JANE CRITTENDEN | STYLING MARISHA TAYLOR | PHOTOGRAPHY JAMES FRENCH



Although Shauna O’Handley and her husband Adam Glabay had a long history of renovations, with this ‘ugly duckling’ property it was the first time they took on most of the work themselves

SITTING ROOM
Dark walls create a dramatic ambience in the grand space. ‘The graphic print rug grounds the room,’ says Shauna. Adam reinstated the fireplace after taking inspiration from nearby properties. Walls in Squid Ink, Paint & Paper Library. Evelina Kroon rug, Layered at Finnish Design Shop. Artwork by Tim Nerheim-Chereck, Mika Gallery. Mirror, Exclusive Mirrors. Frosted Bubble chandelier, Dowsing & Reynolds



Shauna O'Handley and her husband Adam Glabay have renovated eight properties – including one self-build – since they moved from their native Canada to London in the early 2000s. However, doing up their latest house took a different turn once the project got underway. 'We'd planned to use trades but the timing collided with the second lockdown so we took on most of the work ourselves,' recalls Shauna. 'It was a steep learning curve and unexpectedly rewarding to see our vision come to life. The result is we feel much more connected to this house than the others.'

Shauna and Adam chose to buy in east London with fond memories of living here when they bought their first flat some 24 years ago. Their focus was on a Victorian terrace with a

pebble-dash facade and uPVC windows, which was out of step with the preserved period properties on the street.

'We're drawn to the unloved and forgotten,' Shauna explains. 'Particularly the magic of Victorian properties for two Canadians who grew up in 1970s suburbia. We loved that east London had kept its creative, eclectic and independent vibes we remembered. It's an endlessly inspiring place to live.'

The couple decided to extend into the side return and rebuild the back section of the kitchen so they could add an extra room above for a home office. They knocked through two small front bedrooms to reinstate the primary bedroom and reconfigured the loft bedroom to bring in more light, volume and an en suite. Shauna had been thinking about how the interiors might relate to their vibrant surroundings.



HOME TRUTHS

THE PROPERTY

Victorian terrace

ROOMS Sitting room, kitchen-diner/living area, office, cloakroom, utility room, three bedrooms, three bathrooms

LOCATION East London

DINING AREA

A black table and chairs tie in with the aluminium doors.

Etta dining table is similar, Habitat. Dining chairs, Maisons du Monde. Artwork, Chris Moon Art, Jealous Gallery

LIVING AREA

A sofa they already owned found a new home in here because the pink hue perfectly complements the monochromatic scheme.

Nova cushions, Christina Lundsteen. Serge Mouille wall light, Lunara Lights. Art by Julia Burnett. Sofa, Made

KITCHEN

The kitchen is grounded with black base cupboards to make the space feel open.

Cupboards (at the back) in Porcelain II; base cabinetry in New Black, all Paint & Paper Library

'The extractor over the island is almost like a sculptural work of art and ties in with the doors to the garden'



KITCHEN

'Wrapping the large island in quartz streamlines the layout without overpowering the space,' says Shauna.

Similar vintage lab stools, Ember House. Marble-effect quartz worktops, Classic Quartz Stone. Walls in Porcelain II, Paint & Paper Library. Handles, Corston

'We love the character of our unique local shops and cafes and wanted our home to reflect the same charm – imperfect, inviting and full of personality,' she says. 'The colour palette is dark and moody, light and tranquil, bold and understated.'

Cocooning navy sweeps through to muted blues with a punch of patterned wallpaper here and there for depth and interest. An affordable velvet chaise pairs with a luxurious rug, while pops of colour appear in the textiles and investment Christina Lundsteen cushions.

The kitchen's clean lines, natural materials and muted tones take inspiration from a Copenhagen restaurant designed by Space. The couple's travels inspired various art around their home, too – a house in the snow is a nostalgic nod to Canada; a vibrant abstract captures the

energy of a trip to Tel Aviv. However, art is never a starting point for interiors but simply adds to a room.

'Adam and I don't think about art in terms of aesthetic or colour schemes,' says Shauna. 'We're drawn to what we buy because it marks a moment in time, captures how we felt, where we were, and what we learned about ourselves.'

This nostalgic ethos applies to their beloved collection of vintage, thrift shop and eBay furniture too, some of which they happily revived from storage due to their many house moves.

'Furnishing our home became about rediscovering what we already owned rather than buying new,' says Shauna. 'This house has been a project of love, learning and connection. Every corner holds a piece of our journey, making it truly feel like home – for the first time in a long time, I think we might just stay.' 25



BEDROOM

The couple remodelled the loft and lowered ceilings in bedrooms below to create some extra height.

Walls in Porcelain IV, Paint & Paper Library. Nymane wall light, Ikea. Similar Artemis blush velvet cushion, House of Hackney

MAIN BATHROOM

Shauna had had her eye on the wallpaper for a while. 'The pattern is fairly traditional but the blue is modern, especially along with the contemporary tiles.'

Le Jardin Secret wallpaper, Mind the Gap. Mirror, Cult Furniture. Wall lights, Astro



EN SUITE

Velvet curtains, wall panelling and a free-standing bath give the guest space a touch of luxury. 'Warm pink and brown decoration enhances the elegance,' says Shauna.

Walls in Plaster V; panelling in Moleskin, both Paint & Paper Library

MAIN BEDROOM

Adam designed and made the bold green wardrobes that colour match to the botanical wallpaper.

Paradisa wallpaper in Off-White, House of Hackney. Wardrobes in Hopper, Little Greene. Cushions, Christina Lundsteen