

* PERIOD-STYLE SCHEME

'IT GIVES US THE WOW FACTOR EVERY TIME'

Creating a space that works for the whole family was the priority in George Glynn's Victorian-inspired bathroom

Feature JANE CRITTENDEN Styling MARISHA TAYLOR Photography JAMES FRENCH

WHAT DID YOU DISLIKE ABOUT YOUR OLD BATHROOM?

'The estate agent didn't include a photo on the sales details, and when we came to view the house we could see why. It looked dire – cream fixtures with a drizzly shower over a plastic bath and a separate claustrophobic shower room that I called the prison shower! Within a couple of weeks of moving in, I'd booked a builder to take on the job. Bathtime with the kids was an evening routine we usually enjoyed, and I couldn't bear to wait any longer.

HOW DID YOU WANT THE NEW DESIGN TO LOOK?

I wanted it to feel grand, like walking into a luxurious hotel bathroom with a large shower and freestanding bath, and I had

my eye on a green and black scheme. I love the vintage Victorian look of these glossy green tiles and they work well with the age of our house. To finish things off, I thought brushed brass would look lovely and warm against the green.

WHAT WERE THE MAIN DECISIONS YOU HAD TO MAKE?

It made sense to move the toilet into the tiny shower room so we could have a lovely big tub under the window and a walk-in shower where the old bath had been. I drove Jason mad choosing the flooring! I wanted something a bit different and couldn't decide between parquet, large-format tiles or marble. In the end, I chose black-and-white hexagon mosaics as a nod to my monochrome hallway floor. →

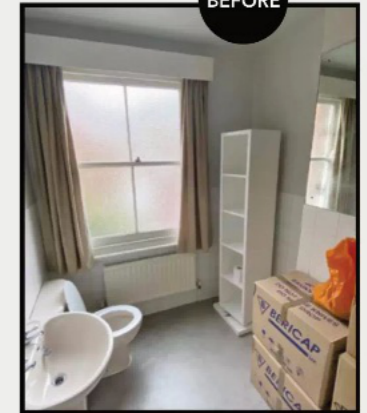


GRAND STYLING

Traditional with a modern twist, George's dream green-and-black scheme has been brought to life with glossy metro tiles complemented by black accents in the Crittall-style shower screen, mirror and floor mosaics

GH MAKEOVER BATHROOM

BEFORE



THE PROJECT DETAILS

MEET THE OWNERS

George Glynn (@glynnovation) and husband Jason, who work in the family's waste-management business, live here with children Penelope, 5 and Patrick, 4

MAKEOVER BRIEF

To renovate the main bathroom in their new home, moving the toilet into the small adjacent shower room to make space for a luxe freestanding bath and walk-in shower

PROJECT COSTS

Bath £1,152 Shower £961
Basins £1,245 Taps £700
Tiles £890 Radiator £525
Toilet £569

TOTAL SPEND

£6,042



FAUX PLANTS

PRICE PATROL



GOOD CHOICE
Neo global fern in black pot, Wilko

£8.50



£23.99

LUXURY TOUCH
Artificial fern, Lights4fun

↑ ELEGANT FOCAL POINT The reclaimed fireplace set against the dark green tiles makes an eye-catching feature and sets the tone for the room, lifted by white walls and floor mosaics, brushed-brass accents and some well-chosen houseplants

HOW DID THE FIT-OUT GO?

As we had only one bathroom, we moved in with Jason's parents. It was a rush as we hired our builder a couple of weeks before they could start, so a lot of shopping decisions were based on what could be delivered in time. The basin arrived broken and I had to buy another one while I claimed the refund. We thought the bathroom would be a standalone project, but it snowballed. Plans to change all the windows were brought forward because we realised we should replace the bathroom one before work began. Luckily, Brothers Joinery were available at short notice. We also had to take up the carpet in Penelope's bedroom to access pipes, resulting in the decision to redecorate. Home Counties

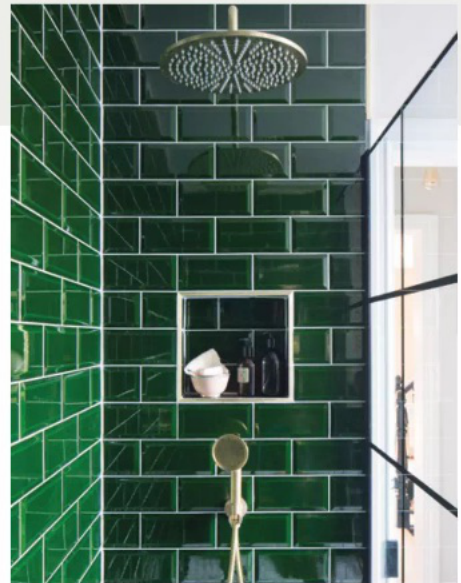
Renovations did a fantastic job, so we kept them on for other projects.

TELL US ABOUT THE LIGHTING

I wanted symmetrical wall lights either side of the chimney breast, which meant having one at the end of the shower above the towel rail, which I rather liked. I had to remove the transparent lampshades as there was too much condensation, but the bare bulbs look just as good. The chandelier was the last thing we fitted, and I'm glad, because it brings a grandeur to the room that really finishes it off.

DID YOU LEARN ANY LESSONS?

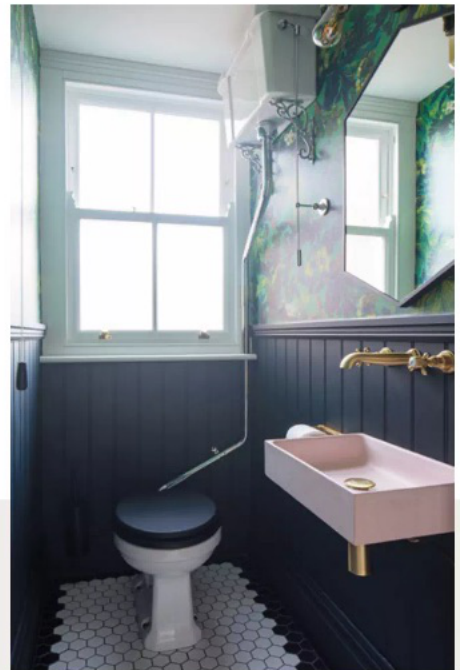
We did unfortunately – to open the box straight away when you receive →



↑ DESIGN DETAILS Removing the old bath left space for a large walk-in shower, which has been tiled to the ceiling to emphasise the height, with an oversized rainfall head completing the luxe look



“ I love the vintage Victorian look of these glossy green tiles, and they work well with the age of our house ”



↑ **COLOUR CONTINUITY**
George used the same floor mosaics in the separate WC, choosing black panelling and floral wallpaper to pick out the green in the wall tiles next door, finished with a blush pink basin

a delivery to check the contents – as we discovered a broken mirror but it was too late to return it. Sometimes buying cheap means buying twice, so we paid a bit more for taps and shower fittings.

WHAT'S YOUR VERDICT?

This is my favourite room and the one that gets talked about most on Instagram. It has brought us warmth and pleasure – now we love bathtime with the kids and afterwards I look forward to a luxurious, candlelit soak. 🕯️

↑ **SPACE SAVER** Removing the toilet freed up room for the tub to fit below the window, and a traditional basin washstand makes the space feel bigger

SHOPPING LIST

Charlotte Edwards Jupiter **bath**, £1,152, JT Spas. Burlington Classic **basin** with **washstand**, £769; Burlington high-level **toilet**, £569, both Victorianplumbing.co.uk, Hudson Reed frame-effect **shower screen**, £195, Heat & Plumb. MPRO brushed-brass **shower valve & handset**, £489; **shower head**, £279, both Crosswater. Walter **basin** (in separate WC), £476, The Cast Iron Bath Company. Butler & Rose Beatrice basin **mixer taps**, £149.99; wall-mounted basin mixer **taps**, £149.99; freestanding **bath-shower mixer**, £399, all Drench. Victorian Green Gloss Mini Metro **tiles**, £39.95 per sqm, Walls and Floors. Hexagon **floor tiles**, £5.50 per sheet, Tiles Direct. Terma Retro **radiator**, £525, Victoriaplum.com. Wallace Steampunk wall **lights**, £36 each, Iconic Lights. Knightsbridge **chandelier**, £99, Dunelm. **Walls** painted in Subtle; **wood panelling** in Ceramic Black Matt, both £28.50 per ltr, Colourtrend. Anyday circle **mirror**, £40, John Lewis & Partners. Venice hexagonal **mirror**, £189.95, Victorianplumbing.co.uk. Vos **tumbler holders**, £39.99 each, Drench. Limerence **wallpaper** in Malachite, £185 per 3m roll, House of Hackney