

BEDROOM CONVERSION



'IT'S BOTH ELEGANT AND MODERN'

Oliver Cunningham has combined dark walls and vibrant artwork for a dramatic scheme

Feature **JANE CRITTENDEN** Styling **MARISHA TAYLOR**
Photography **JAMES FRENCH**

WHY DID YOU DECIDE TO SACRIFICE A BEDROOM TO MAKE INTO A BATHROOM?

I'd converted the loft into two bedrooms and a shower room, and kept my main bedroom on the first floor. I wanted the bathroom to be spacious, relaxing and luxurious, and as the old one was small, it was ideal for an upstairs utility room as there wasn't space for one downstairs.

WHAT INSPIRED YOUR NEW SCHEME?

I saw a Pinterest picture of a dark grey bathroom with a marbled floor in a Parisian apartment, and I loved its timeless, elegant look, but also its calm simplicity. I saw a similar bathroom in a client's townhouse in Notting Hill and was blown away – double doors opened onto a marble-clad room with a roll-top bath in the middle, a huge chandelier above and a glass cube shower. It looked like a really lavish space rather than a functional bathroom, and that concept stuck in my mind.

HOW DID YOUR IDEAS EVOLVE?

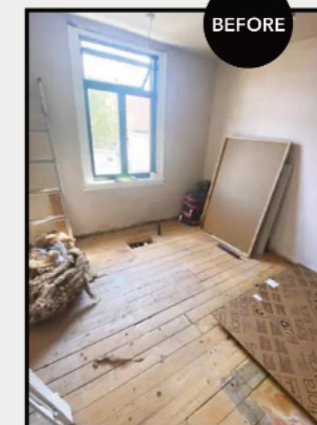
I bought an old French crystal chandelier and while I was looking for similar wall lights, I had a change of heart – having both would →



OLD WITH NEW

Dark grey walls and a contemporary chandelier deliver a smart, modern take on a Victorian bathroom, with its traditional fittings and marble flooring. 'It took a while to find a cool, deep grey that didn't have blue or brown tones, or look too black,' says Oliver

GH MAKEOVER BATHROOM



THE PROJECT DETAILS

MEET THE OWNER

Oliver Cunningham, a hairdresser, lives in this four-bedroom Victorian terrace in Hove

MAKEOVER BRIEF

To change a bedroom into the main bathroom as part of a whole-house renovation, including taking space from the old bathroom to allow for a double shower

PROJECT COSTS

Bath **£1,500** Shower **£1,400**
Basin **£785** Taps **£700** Toilet
£320 Tiles **£3,000** Lighting
£270 Towel radiator **£220**

TOTAL SPEND

£8,195



↑ **INDULGENT DÉCOR**

The statement light is perfectly positioned above a stone tub, while electric underfloor heating is supported by a small radiator

→ **DESIGN DETAILS**

The washbasin splashback ties in with the shower tiles, while the circular mirror reflects the curves of the wall lights



BATHROOM WALL LIGHTS

PRICE PATROL



£25

GOOD CHOICE
Salarino Opal glass wall light in black, Habitat



£49

LUXURY TOUCH
Vaughn wall lamp in black & brushed brass, Made.com

have looked too glitzy. I'd also realised the chandelier was actually too big and too low above the bath, so I went looking for lighting inspiration at some of my favourite companies – Graham & Green, Rockett St George and Dowsing & Reynolds. At the latter, I discovered the frosted bubble chandelier and wall lights – they're contemporary, and I like the contrast with the old, so I ran with this idea instead.

HOW DID YOU PLAN THE LAYOUT?

Although the room is about 3x3.5m, there was really only one option. It made sense to

keep the toilet waste on the outside wall and since the double shower was my must-have, this was positioned on the longest wall. I'd really wanted the freestanding bath in the middle of the room but there wasn't space, so instead, below the window, it's the first thing you see when you come into the room.

AND WHAT ABOUT THE FIXTURES AND FITTINGS?

I love a freestanding Victorian-style bath but didn't want a cast-iron one because from previous experience the water cools too quickly. I ruled out a plastic bath too →



“I wanted to recreate the classic elegance of a marbled bathroom in a Parisian apartment”

because they're too flimsy, but found a gorgeous stone tub, which is silky smooth to touch. Getting the frameless shower enclosure right was important, and a big investment, so I didn't buy online, instead going to local bathroom shop Leaneys of Lancing to see it for myself - the glass is 10mm thick, as I wanted it to be sturdy and it's such a luxury to use.

WOULD YOU DO ANYTHING DIFFERENTLY NOW IT'S FINISHED?

The layout isn't perfect - if I open the shower door too wide it collides with the toilet, but I'd already bought the cubicle when I discovered this. And since I parted ways with my builder, I probably would have had a better experience with a bathroom company, who would have also prepared a scaled CAD drawing.

WHAT'S BEEN THE BIGGEST SUCCESS?

Definitely the cornicing I had put in. It's given the bland space elegance and style, and made the bathroom feel like a proper room - guests always comment on how lovely it looks. ☺

LUXE SHOWER

Taking space from the old adjoining bathroom gave Oliver the room he needed for a large walk-in shower as well as a statement bath

SHOPPING LIST

For a similar **shower head** and **valve**, try the Burlington Trent, £594.15; for a similar **toilet**, try the Burlington Rimless close-coupled design, £318.75; Burlington Edwardian 80cm **basin** and **washstand**, £783.09; Burlington Kensington Regent basin **taps**, £279.41; for a similar stone **bath**, try the Old London Farringdon, £1,899.95; for a similar freestanding **bath-shower mixer**, try the Lancaster Traditional, £219.95; Mayfair **towel rail**, £219.95, all Victorianplumbing.co.uk. For a similar **shower enclosure** with stone tray, try the Mode Cooper, £420, Victorianplum.com. North Haven Basketweave **floor tiles**, £199.20 per sqm; East Hampton **wall tiles**, £1.39 per tile, both Fired Earth. For similar **paint** colour, try Dulux Cannon Ball, £20 per 1.25ltrs, Homebase. Frosted Bubble **chandelier**, from £149.99; Angler **wall lamps**, £59.99 each, both Dowsing & Reynolds. For a similar **mirror**, try the Eli, £185, Graham & Green. Night Nurse **screenprint** by Judith Supine, £850, Prescription Art