

'Our kitchen now feels connected to the house'

Plenty of windows and glass doors ensure this space is light and bright

WORDS JANE CRITTENDEN | STYLING MARISHA TAYLOR | PHOTOGRAPHY JAMES FRENCH



UNITS

Forest Green cupboards were the starting point for the design

Rob Beer, director of an architectural practice, lives with his partner Ellie Beach, daughter Libby and newborn Bodhi in a four-bed Victorian semi in Brighton, East Sussex



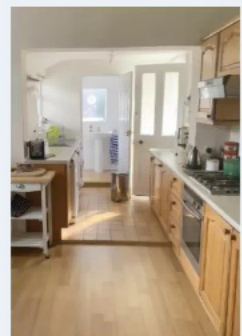
TABLE

The semi-bespoke farmhouse table came from Made In The Cellar at Etsy



INTERNAL GLAZING

Crittall-style glass doors open up the kitchen to the hallway



Before

'The house needed rewiring and a new heating system as nothing had been done for at least 40 years. In the galley kitchen, the cupboards were falling apart and there was a bathroom tacked onto the end of the room'

What was your vision for the space?
The kitchen projected out from the house, so the obvious idea would have been to extend at the side to square off the back and link with the dining room. However, we didn't want to lose the patio. As a designer at Life Size Architecture (lifesizearchitecture.co.uk), I'm used to solving space issues so was able to plan a new layout that would work harder. We kept the original hallway and living room because we liked the period details, and modernised the back. Most of the walls were replaced with a structural steel framework so we could have wide openings and lots of glazing, including corner glass doors opening to the outside and internal glass walls replacing a door and a wall.

You made some major changes to the layout...
Yes. We didn't want the former dining room to become a corridor through to the kitchen, so we swapped the rooms around. The layout was driven by the internal glazing. It made sense to put cupboards and appliances along the back wall with an island, which we kept as large as possible.

Where did you buy the kitchen?
Ellie was inspired by green kitchens with brass handles on Instagram, so that became our starting point. Magnet's Integra Dunham units came in the exact blue-green tone we liked, and we thought the Shaker doors went with the period feel of the house.

How did you choose the other surfaces?
Because of the green and brass units, as well as our dark grey aluminium door frames, we kept everything else simple – a white worktop from Gemini, white walls, white wall tiles – as we wanted the kitchen to look more contemporary than the rest of downstairs. Metro tiles have been laid in a herringbone pattern to give a modern look and echo the dark herringbone floor, which runs through from the hallway.

Would you change anything?
No, we're really pleased that we've achieved this look and layout without extending. I particularly love the corner doors and internal glazing – they create a really open feel and provide a link between the different spaces. Standing at the island, you feel connected to all the other rooms – it's fantastic.

OUR SOURCEBOOK Units, appliances, sink, tap; all magnet.co.uk. Worktop, geminivorktops.com. Metro tile splashback.tiles-direct.com. Pendants and wall light; both made.com. Flooring, oceanfloorstid.com. Bar stools, dunelm.com. Double wall light and dining chairs; both johnlewis.com. Bespoke joinery, dicarpentrysolutions.co.uk



WHAT WE LEARNED

'The right glazing can totally transform your home. Also, there are often ways to create a better living space within an existing footprint rather than extending'

FIXTURES AND FITTINGS

Warm brass complements the rich green cupboards, and is echoed in the sink and tap

HOB

Although the island is big enough for the hob, Rob and Ellie decided to put it along the back wall for safety reasons

ISLAND

Simple white worktops were chosen to keep the look contemporary and ensure the colour of the units remains the focus

WHAT WE SPENT

CUPBOARDS (INCLUDING HANDLES) £14,040
APPLIANCES £4,000
SINK & TAP £425
WORKTOP £2,500
TILES (INCLUDING INSTALLATION) £450
LIGHTING £307
FLOORING £4,000
FURNITURE £1,635
JOINERY £1,250
TOTAL £28,607