

Let there be light

Jane and Pete Evans fell for the faded grandeur of an unmodernised house and, more than five years and two extensions later, have revived it for family life

Kitchen-diner

'We extended out and across the width of the house to create a room with lots of light and space,' says Jane. 'I had a vision of a huge chandelier over a large wooden table. I love the contrast of luxe and rustic – it's one of my favourite looks.'

BUY THE KEY PIECES

French-style reclaimed refectory table is similar, £883, Nicky Cornell. Chandelier, £800, Opera Chandeliers



Welcome to my home



Jane Evans lives here with her husband Pete and their children Jude, 10, Estella, eight and Delilah, three. Jane is a part-time teacher and Pete runs a property company.

THE PROPERTY

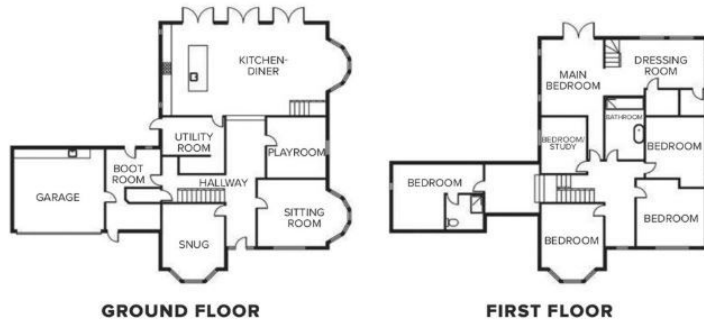
A detached six-bedroom Edwardian house in Nottingham, which the family moved into in 2015.

THE VALUE Similar properties in the area are worth around £1m.

“Renovating this house has been such a rewarding experience and the end result feels really personal to us”



Take a quick tour...



When Jane and Pete were given the chance to renovate a period property that had been in Jane's family since the 1920s, they were over the moon. The couple had been renting while waiting for their 'forever home' to come along – and this fitted the bill. 'The house was special to me,' says Jane. 'My grandmother and her eight siblings lived here and I'd visited it since I was a little girl. Pete and I are from the area and the location was a dream. It's on the edge of a village, close to our families, Pete's work and the kids' school. It felt serendipitous.'

The house is on a big plot, with views in all directions. It was habitable, but little had changed in 50 years. The couple loved the period features and big reception rooms, but weren't as keen on the poky rooms at the back. 'A big

kitchen was the dream,' says Jane. 'We wanted to bring the grandeur back and improve the light and flow.' The couple added a 6m extension, turning the rear rooms into a playroom, cloakroom and utility. 'It was overwhelming when it was finished,' says Jane. 'We also added a side extension for a garage, boot room and guest suite above. It was less stressful to view it as a series of small projects rather than one big one that was taking a long time.'

Over three and a half years, every room was stripped back and redecorated. 'I made mood boards and looked for a theme I loved – like the pink sofa, chandeliers and brass taps. I switched between warm and cool pinks and greens, and picked out a blind, wall or piece of furniture, creating a look that's personal to us. Now, you know you're in our house, whichever room you're in!'



Living area

'I wanted the kitchen-diner to feel uncluttered, but not empty, so I chose a few large-scale items, like the sofa. A velvet sofa in a kitchen seems insane, but it's a special, scrubbable fabric.'

BUY THE KEY PIECES

Souffle sofa in Dusty Rose clever velvet, £1,845, Loaf. Poppy Field rug, £125, French Connection Home

“I love this shade of pink against the white walls and limestone floor. It looks so warm and inviting”



ARCHED DOORS
These fit the house's period architecture better than modern bifolds



Pete made the rustic hall bench himself



Kitchen-diner

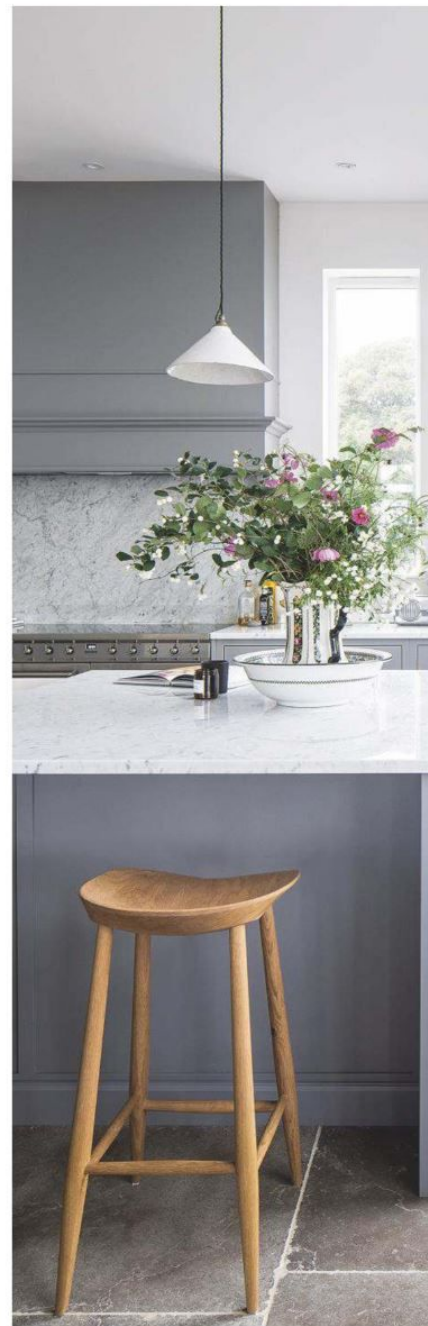
'We wanted a modern but classic scheme that would last. I was drawn to grey Shaker-style units with marble worktops and brass handles and taps for a touch of grandeur. I like mixing textiles, and warm wood, stone and brass instantly added character.'

BUY THE KEY PIECES
Real Shaker cabinets, £600 for a 600mm base unit; Bum stools, £440 each, both deVOL

Utility room

'We turned the old kitchen into a pantry and laundry room. I love catching a glimpse of the floor tiles through the doorway.'

BUY THE KEY PIECES
Devonstyle Grey tiles, £17.99sq m, Tons of Tiles



Kitchen-diner

'Some project decisions were difficult, but the kitchen layout was surprisingly easy,' says Jane. 'I had parallel lines in mind, with the units along one wall, the island opposite and the dining table behind it.'

BUY THE KEY PIECES
Dove Grey tumbled limestone floor tiles, £56.70sq m, Floors of Stone. Crackle pendant, £200, deVOL

“The kitchen was our biggest ambition for this house. It has given us so much space and light, and transformed our family life”



Snug

'This is our cosy evening refuge, so I've gone for darker tones that are richer than anywhere else. The painted black floorboards and muted green walls really draw out the pink accents.'

BUY THE KEY PIECES

Walls in Card Room Green estate emulsion, £47.95 for 2.5ltr, Farrow & Ball. Tom Tailor zigzag Kelim rug in Berry is similar, from £141, Modern Rugs



WHAT I'VE LEARNED

“Pete hired tradespeople he knew and trusted, which took longer than using a single building contractor, but meant no costly mistakes. Living here throughout was frustrating, but we weren't under time pressure so were able to save for the things we wanted”



Bathroom

'The eye-catching shower tiles were my starting point, says Jane. 'I love the softness of pale pink with the drama of the black pattern. Pink can be warm and

cosy, like the velvet blinds in the snug, or sophisticated and feminine like this.'

BUY THE KEY PIECES

Lily Pad Off Black tiles, £69sq m, Ca'Pietra. Walls in Calamine estate eggshell, £64 for 2.5ltr, Farrow & Ball



BRUSHED GOLD TAPS
Give a warm, textural touch



'I painted the stairs and landing walls in a mid grey that looks light but still has depth.'



'The chest of drawers was for sale for £20 on a grass verge. I painted it in Farrow & Ball's Pink Ground.'

FEATURE JANE CRITTENDEN STYLING MARISHA TAYLOR PHOTOGRAPHS JAMES FRENCH



FEATHER SHADE
Simple, but so luxurious

Bedroom

'The guest suite is on the upper floor of the new side extension and has a loft-style look. I asked my builder to lay new pine floorboards with little gaps between them to make them look original.'

BUY THE KEY PIECES

Umage Eos feather pendant, from £79, Black by Design. Afaw rug, from £99, La Redoute. Marina throw, £185, Soho Home. Cushion, £70, River Island