

Demolishing walls and adding a new double-storey extension has allowed for a spacious kitchen-diner with plenty of circulation space. The strong industrial aesthetic works well within the generous dimensions of the room, which seamlessly connects to the entrance hall, utility room and garden. The dark wood splashback softens the surrounding harder materials, which Nicola repeated on the breakfast bar.

**Kitchen,** Leicht. Wild Brasilica **splashback,** Spekva. For a similar **worktop** go to Cavendish Equipment. Fusion **tap,** Quooker

**TOP TIP**  
Teaming richly coloured units with a crisp white backdrop makes a stunning contrast, and can prevent the kitchen feeling too dark

TWO-STOREY EXTENSION

# SELF-MADE SANCTUARY

Nicola and Adam Harvey's dynamic style has turned their dated Victorian house into an on-trend family home



A seamless concrete floor is paired with Leicht's Concrete-A kitchen cupboards and stainless-steel worktops, which have a 'rough brush' finish so scratches aren't noticeable. The breakfast bar is a dark wood to add warmth to the utilitarian scheme.

Bar stools, Hay. Aplomb mini suspension pendants, Foscarini Lighting

## Profile

### THE OWNERS

Nicola Harvey, an interior designer (designbynicola.co.uk), her husband, Adam, who owns a property investment company, and their daughters, Mia, seven, and Summer, four

### THE PROPERTY

A four-bedroom detached 20th-century house in Radlett, Hertfordshire

### PROJECT COST

£200,000

WORDS JANE CRITTENDEN PHOTOGRAPHS JAMES FRENCH STYLING MARISHA TAYLOR

Nicola and Adam Harvey are design aficionados, enthused by their respective jobs in interior design and property investment, so when they finally found an ambitious renovation project, they couldn't wait to get stuck in. 'We spent two years looking for the right house in the right location,' says Nicola. 'This one was completely uninhabitable, but we weren't scared of taking on a big project.'

With 300 square metres of space and a big garden, it isn't hard to see why the Harveys were drawn to the bones of the property. They sketched out ideas, drawing on their experience to push the boundaries of conventional renovation design and find ways to create visual impact. A hidden gem revealed itself in the roof. 'The high pitch formed a huge loft area, which would have been a waste not to use,' Nicola explains. 'Rather than convert, the height sparked the idea to have a mezzanine floor in our bedroom and a playroom above Summer's bedroom.'

The couple also opened up the ceiling above the landing with a big roof lantern. They added to the openness by changing the staircase – making an industrial design statement in the process. 'The original staircase split left and right onto the landing,' says Nicola. 'My new design is a single flight and wider by 100mm, with a steel case, open timber treads and a glass balustrade.'

Light, openness, and space form the bedrock of Nicola and Adam's design approach. In the entrance hall, a ceiling-height sliding door closes off Nicola's office, and glass doors link seamlessly through to the 11-metre-wide kitchen-diner-snug. Here, a four-metre, double-storey extension increases the space and has helped turn their bedroom into a luxurious sanctuary.

This master suite is the jewel in the design. 'We wanted the wow factor so I designed a mezzanine dressing room and staircase,' says Nicola. 'I found a local firm to make both staircases as they were competitively priced.'

The demands of changing the upstairs layout meant few of the walls remain – the Harveys even sacrificed a bedroom. But the remodelled look is better balanced, showcasing four en suite bedrooms and a laundry room. 'It made more sense to put it upstairs as this is where most of our washing is,' says Nicola. 'Downstairs, we have a small utility with a dishwasher and extra sink.'

The couple enlisted designer and structural engineer Laurence Goodman, from Frampton-Martin Sage Design, to draw up their ideas. Plans for the double-storey rear extension were submitted as soon as the Harveys completed on the house. The family moved in with Adam's mum during the renovation. 'To save money, I sourced contractors for the plumbing and heating, who conveniently had their own bathroom company,' she says. 'They recommended an electrician they'd worked with before, which was great because I wanted the team to gel together.'

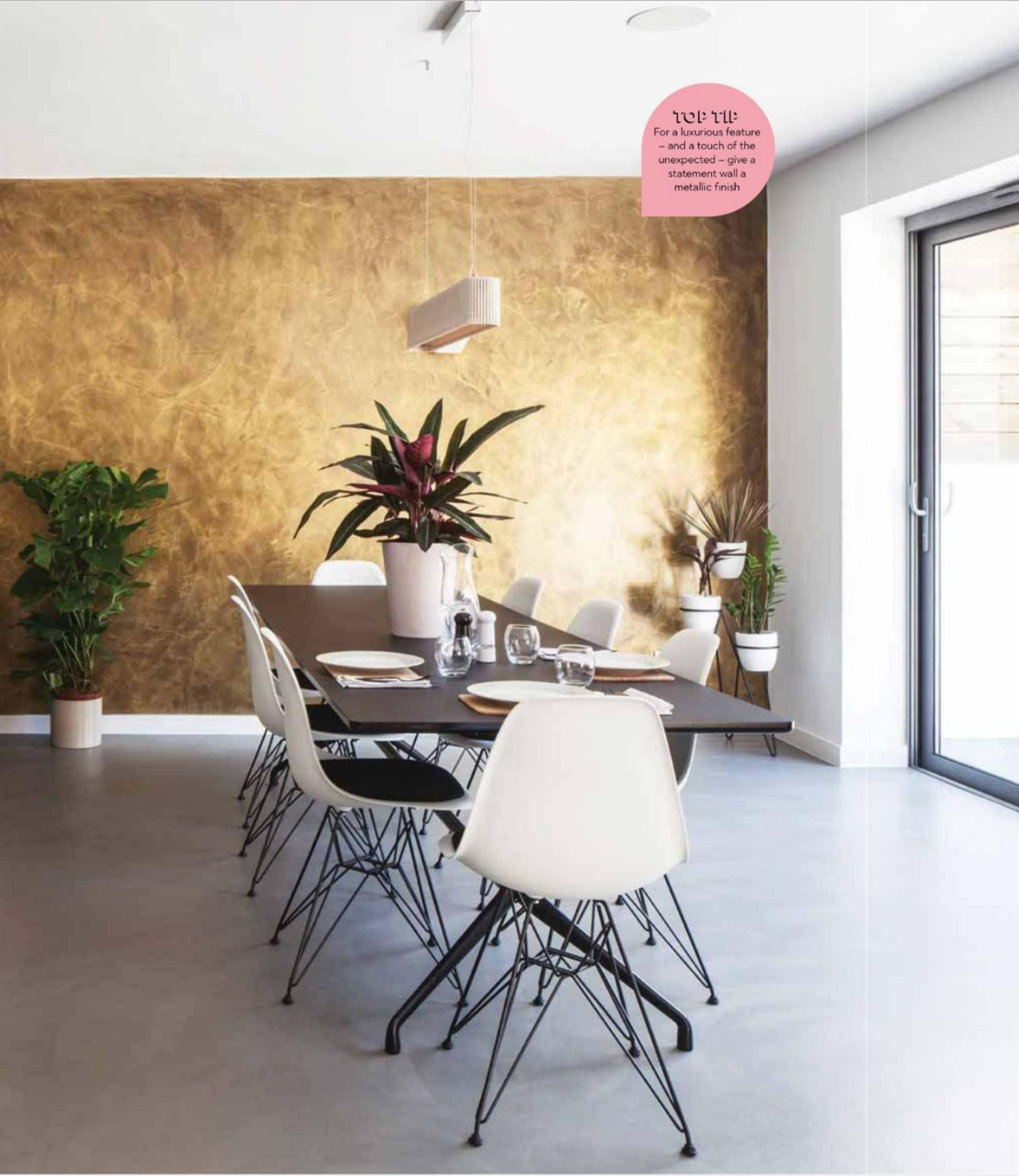
Nicola also found a screed company to be sure the quality and application was compatible with the concrete flooring they'd chosen. 'We used a thin concrete product applied with a trowel,' says Nicola. 'We laid it on our downstairs screed floor and upstairs on double-layer plywood.' Concrete became an unexpected design aesthetic elsewhere, too. 'We decided to have a microcement metallic gold feature wall in the dining-snug area and in our bedroom,' says Nicola. 'We've also got dark grey microcement in our downstairs loo. We bought the concrete by the square metre, and the more you buy the cheaper the unit price.'

The swathe of gold softens the utilitarian concrete and steel aesthetic, and balances out the industrial-style kitchen cupboards and stainless-steel worktops. Elsewhere, the remaining walls are painted white for a unified feel, with warmer colour accents in soft furnishings and accessories. 'We started off wanting an industrial look but as the project progressed we've moved towards a Scandi minimalist feel,' says Nicola. 'Lighting was important, too. We spent a long time working out a plan to create layers of light.'

Nicola and Adam hosted a big family party to celebrate finishing the renovation. 'I love the feeling of space,' says Nicola. 'And I particularly love the impact of our bedroom because it's not what you would expect. The house is great for clients as they'll come here, get ideas, and see how accessible it is to create unusual design.'



**TIP**  
For a luxurious feature – and a touch of the unexpected – give a statement wall a metallic finish



**Above** The shaggy rug and lattice wood shade add texture and warmth to the concrete floor. Green patterned cushions draw out the wall's rich tones.

**Rug.** John Lewis. **Light shade,** Graham & Green. **Cushions,** Black Parrot. **Wall light,** Foscarini Lighting. **Hay Mags sofa,** Pink Apple Designs

**Left** The gold wall looks stunning in the open-plan room and is made with microcement.

For a similar wall **material,** try Microcement Supplies UK. **Dining table,** Hay. **Eames chairs,** Vitra. **Pendant light,** Skandium

**Right** Glass doors fold back to the wall for a streamlined feel between the kitchen and hallway. To the right, a sliding door reveals Nicola's office.

For similar **doors,** try Space Slide. For similar **stairs,** try Contemporary Steel Staircases

## RISE & SHINE

Illuminate from the ground up with a statement floor lamp



- 1 Cane Birgion floor lamp, £89, Dunelm
- 2 Antique bronze palm leaf floor lamp, £365, Audenza
- 3 Eden floor light, £100, Debenhams
- 4 Stella opal glass ball floor lamp, £100, Matalan





The master bedroom en suite was created by knocking the old bathroom and toilet together, and benefits from the added space of the extension. Nicola carefully planned the layout to fit in a curved bath, double vanity and walk-in shower. She chose Carrara polished marble tiles in different sizes for the floor and walls. A separate brick pattern defines the wet room shower.

For similar **tiles**, try Walls & Floors. For a double **vanity unit**, try the Mode Burton at Victoria Plum. Try the Lusso Luxe wall-mounted **basin mixer** for a similar tap



## Contacts

**Designer and structural engineer**  
Frampton-Martin Sage Design,  
01923 351094  
**Kitchen** Leicht,  
07802 402921, leicht.com  
**Artwork** Jealous Gallery,  
020 7739 4107,  
jealousgallery.com

Veneto large format marble-effect floor tile, £34.95 per m<sup>2</sup>, Walls & Floors

## SAVE V SPEND MARVELLOUS MARBLE

Create a luxurious look with some upscale tiles

Maranello large format marble-effect polished tile, £59.63 per m<sup>2</sup>, Fired Earth



**Above** Opening up the roof and adding the two-storey rear extension increases the volume of the master bedroom, with the mezzanine and concrete floor creating dynamic design impact.

**Bed and bedside tables**, Bluesuntree. **Drawers**, Habitat. **Metallic cow hide**, City Cows

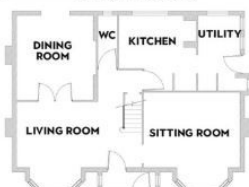
**Left** The gold microcement wall adds glamour, enhanced by layered lighting. Reading lights are built in either side of the bed with spotlights above the bench.

**Reading lights**, Astro Lighting. **Bedside pendants**, Muuto. **Spotlights**, Artek. **Animal cushions**, Smallable. **Artwork** by Ally McIntyre, Jealous Gallery. **Bench**, Artek



## THE PLANS

### BEFORE GROUND FLOOR



### AFTER



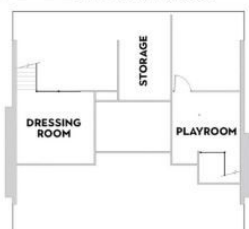
### BEFORE FIRST FLOOR



### AFTER



### AFTER MEZZANINE FLOOR



**Left** A space-saver staircase with safety glass was fitted by the builders in Summer's bedroom and leads up to a loft playroom.

**Bed,** Aspace. **Rug,** Graham & Green. **White metal side cabinet,** La Redoute

**Below** Carefully chosen accessories add colour and pattern to Mia's simple white room.

**Rug,** Debenhams. **Stool and desk,** Habitat. **Artwork** by Ben Eine, Jealous Gallery.



**Right and far right** Little has changed outside the house, although the Harveys replaced all the windows with grey textured aluminium double glazing. The timber door was designed by Nicola with sandblasted glass panels

For similar **windows**, try Velfac. For a similar **door**, try Jonathan Elwell Bespoke Joinery

### BEFORE



“This house was uninhabitable, but we weren't scared of taking on a big project”



**TIP**  
Use excess garden to create valuable off-street parking. Gravel is a budget-friendly surface