

Sleek monochrome reno

‘Our dream home was three years in the making!’

Temi Lorant and husband **Eugene** made sure not to rush into renovating this run-down semi, taking years to plan the perfect extension and a put-together decor look

‘It took a while to figure out what kind of bar stools we wanted,’ says Temi. ‘They needed backs, so the kids didn’t fall off, and to feel comfortable enough to sit for long periods. These are super comfy, like sitting in an armchair, and not wildly expensive!’



For Temi and Eugene Lorant, patience was the key to transforming this run-down Victorian semi into their dream home. They spent three years working through a design for their new wrap-around kitchen extension until they achieved what they wanted, and the final piece of the design jigsaw fell into place just before they were due to submit their planning application.

‘We were thinking about building a porch, but since our front door was on the side of the house, we couldn’t see how it could work with the new side extension,’ Temi explains. ‘Eugene figured out if we increased the footprint at the front of the new structure by two metres, we could create a hallway with a pitched roof and a front-facing door. It’s such a light, beautiful way to come into our home.’



KITCHEN

‘We had some ideas about the layout and the team at Howdens in Southall were really helpful merging our thoughts with their suggestions,’ says Temi. ‘The waterfall island is key to bringing the two sides together, providing a place to cook and socialise without overpowering the room’

OUR MUST HAVES

For similar, try Chilcomb kitchen in Black, POA, Howdens. Painswick Owl engineered oak herringbone floor, £52.99 per sq m, Luxury Flooring & Furnishings. Fulbourn counter stool in Beige, £159.99, daals. For similar, try Quooker Fusion round 3-in-1 tap in Gold, £2,120, Appliance City



STEEL WORKS

Instead of boxing off a structural beam, make a statement by painting in a prominent colour to celebrate the architectural changes in your home. Don’t forget to use fire-resistant paint!



‘I love Victorian houses and dreamed of having a wood herringbone floor for a long time,’ says Temi. ‘The flooring company’s online virtual reality tool really helped us see that a warm gold oak looked best with the black cupboards, and I repeated the tone in the gold handles’

‘We’d never considered a black kitchen before and from here monochrome decoration flowed throughout with touches of brass, gold and soft colour along the way’



COME ON IN...

WE ARE Temi Lorant (@home.chest.of.dreams), 33, an HR employment law business partner and my husband, Eugene Lorant, 34, an IT data consultant. We live here with our children, Issy, seven, and JJ, four.

OUR HOME is a four-bedroom Victorian semi in Surrey.

FOR INSPIRATION We looked at the planning portal online to see how neighbouring properties had designed their extensions. We also viewed finished houses for sale in our area to get ideas.



DINING AREA

The warm oak of the dining table, along with its black metal legs and chairs, keep the kitchen colour scheme flowing into the dining area

OUR MUST HAVES Wall painted in **matt interior paint** in Black 02, £45 for 2.5L, Lick. For similar, try Natural Industrial **dining table** – 6 seater, £699; **dining bench**, £290, both Grain & Frame. For similar, try spindle **dining chairs** in Black, £279 for 2, John Lewis & Partners

TIME TO DECIDE

Temi and Eugene decided to move from their previous maisonette in Brentford soon after Temi became pregnant with their first child, and rented a house in Surrey, near Temi's parents, while they searched for the perfect property. 'This was going to be our first big renovation and our long-term home, so renting gave us time to find the right house,' Temi explains. 'Funnily enough, we ended up buying on the same road – we had no idea we were living that close to our future home.' The couple were looking for a house

with head height for a loft conversion and enough garden space to extend the kitchen. The Victorian semi was in a poor state but had a lean-to carport structure on the side. 'I was sold after seeing every bedroom was a proper double, which was also an important requirement,' says Temi. 'Then when we went up to the converted loft, we were delighted, and put in an offer within the hour.'

Temi and Eugene moved into the property with a plan of action. 'We bought the house certain we could afford to make all the changes we wanted in the coming years without compromise,' says Temi. 'We didn't want a big mortgage, or a massive debt, nor have any regrets. I've been really transparent about costs on my Instagram account as it's helpful for those wanting to do a similar project.'

PREPARATION IS KEY

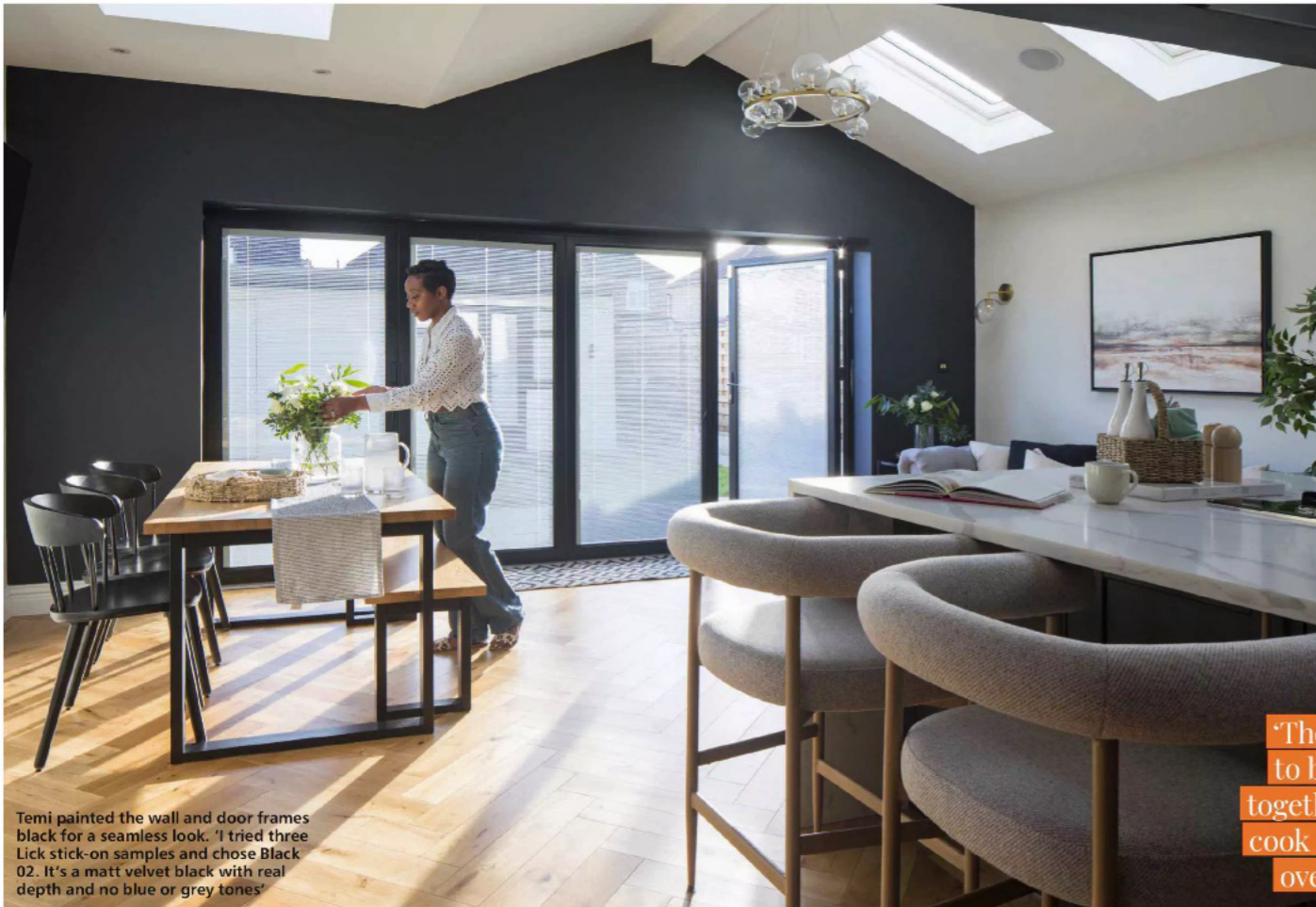
The main project focused on the side and rear kitchen extension, as well as a new garden room. 'The kitchen was narrow and didn't have room to socialise and, although we didn't

'I'd always wanted a Chesterfield sofa but nearly fainted when I saw the prices in high street shops,' Temi says. 'A follower on Instagram was downsizing nearby and offered to sell me her grey three-piece for less than half the price – it was meant to be'

UTILITY

'Eugene and I were really interested in the build process and always asking the builders questions, we were like their apprentices!' says Temi. 'I was taught how to tile and I'm really proud of the work I did in here'

OUR MUST HAVES Piacenza Mix White wall **tile**, £39.95 per sq m, Tile Mountain. Touch Kitchen **tap** in Matt Black, £89.99, Homary. Walls painted in Valspar classic walls & ceilings interior **matt emulsion** in Apricot Blush, £30 for 2.5L, B&Q. Black hexagon **door knob**, £11, Pushka Home



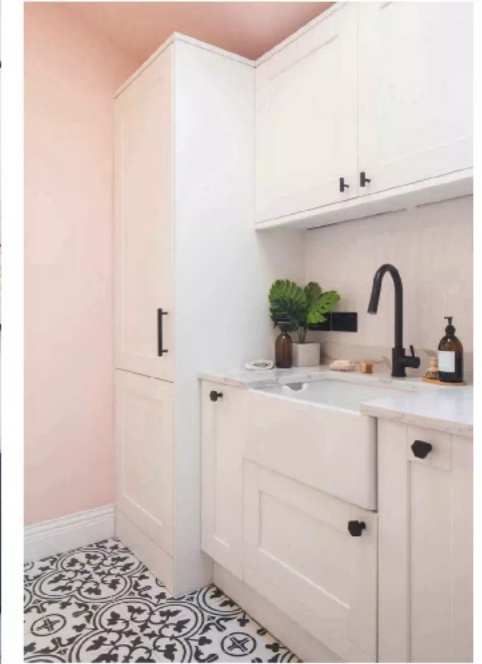
Temi painted the wall and door frames black for a seamless look. 'I tried three Lick stick-on samples and chose Black 02. It's a matt velvet black with real depth and no blue or grey tones'

'The kitchen island is key to bringing the two sides together, providing a place to cook and be sociable without overpowering the room'

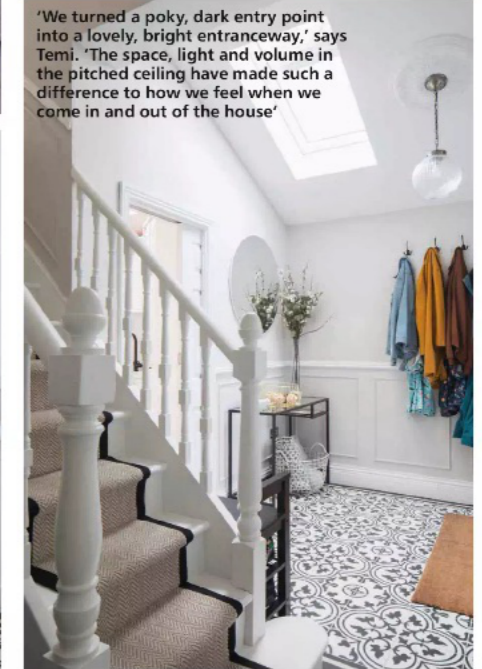
HALLWAY

Temi's choice of floor tiles was inspired by her love of Victorian houses. 'I wanted them to make a statement but still look like they belonged,' she says

OUR MUST HAVES Ledbury Charcoal Black **tiles**, £24.95 per sq m, Walls and Floors. For similar, try Blue stripe ceramic **vase**, £19.99, Avoir Interiors. Cascade II portrait **printed canvas art** in White frame, £95, Mala Art



'We turned a poky, dark entry point into a lovely, bright entranceway,' says Temi. 'The space, light and volume in the pitched ceiling have made such a difference to how we feel when we come in and out of the house'





LIVING ROOM

'We've always had a gallery wall in the houses we've lived in, but there's no planning, it's just a reflection of our life,' says Temi. 'Mostly, I use gold or black frames and try to find balance with a mix of small and bigger sizes'

OUR MUST HAVES

For similar, try Chesterfield velvet 3 seater **sofa** in Green, £675; for similar, try Chesterfield velvet **armchair** in Light Grey, £510, both Habitat. Dome **floor lamp** in Brass, £150, John Lewis & Partners



◀ 'After doing the kitchen, my love affair with black decor grew, encouraging me to redecorate the living room and add panelling around the fireplace,' says Temi. 'I chose a moulding where we'd still see the detail after we painted'

need to be completely open-plan, we wanted to create a layout where spaces flowed into one another,' says Temi. 'Our builder said we were dream clients as by the time we started, we knew exactly what we wanted!'

Over the years, the couple absorbed ideas from home renovation shows, Instagram and magazines, and had countless conversations about the changes. They hired LMDS Architectural Services who had experience of the local planning process. 'Lyndon Morgans understood all the planning red tape, such as the height and angle of the extension roof to make sure we didn't impact our neighbours,' says Temi. 'He got the best out of the space – the new room is 42 square metres – and connected us with our builder. He was also knowledgeable about the Thames Water build-over agreement, which we needed since we were building close to a public manhole in our garden.'

Meanwhile, the couple had replaced all the windows and decorated rooms that wouldn't

SPACE SAVVY

Stealing one metre of space from the kitchen during the renovations, and adding a pocket door, enabled Temi and Eugene to turn their downstairs toilet into a useful shower room



SHOWER ROOM

'Tumbled marble tiles in dark blue and a herringbone pattern create a relaxing spa feel, while the low-down shower hose is easy for the kids to reach,' says Temi

OUR MUST HAVES

Crosswater MPRO wall mounted **basin mixer** in Brushed Brass, £239.95, Victorian Plumbing. For similar, try Bluestone tumbled herringbone **tiles**, £79 per sq m; White marble herringbone mosaic **tiles**, £69 per sq m, both Starel Stones

OFFICE AREA

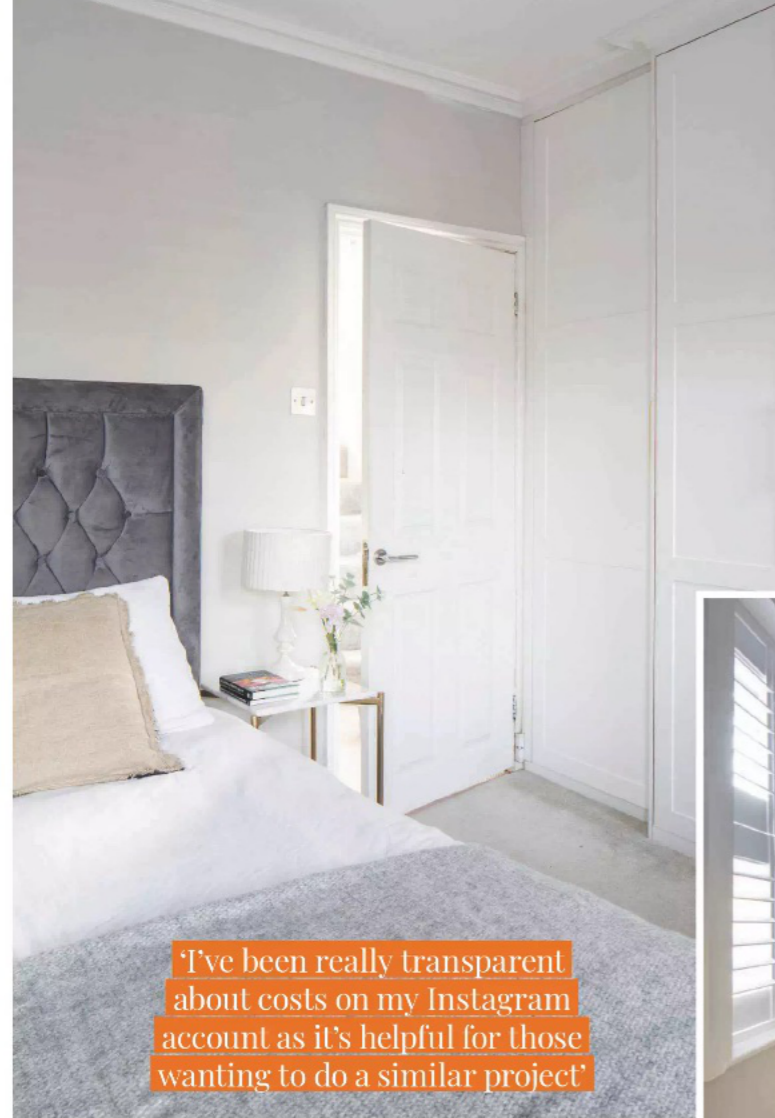
Temi gave purpose to this side of the living room with a new home office. 'We used the kitchen quartz offcuts and made a floating desk, which I love,' she says

OUR MUST HAVES

Medium frosted bubble **chandelier**, £529, Dowsing & Reynolds. For similar, try Brazoria accent **mirror** in Gold, £164.99, Wayfair



'The walls and new wardrobes are painted a putty white, a bright neutral that balances out the darkness of the grey headboard and black feature wall,' says Temi. 'We're looking for art to go above the bed and the paint tone will make a great backdrop'



'I've been really transparent about costs on my Instagram account as it's helpful for those wanting to do a similar project'

MAIN BEDROOM

'I loved the detailed buttoning on the Chesterfield sofa that we have downstairs, so I brought this style into our bedroom upstairs by adding the upholstered headboard with buttons,' she says

OUR MUST HAVES

Walls and cupboards painted in dead flat paint in Ammonite, £33 for 750ml, Farrow & Ball. For similar, try Loxley velvet ottoman bed frame in Loxley Grey, £539, Dunelm. For similar, try Fontana White marble and Brass side table, £149, Cult Furniture. Wall painted in matt interior paint in Black 02, £45 for 2.5L, Lick. For similar, try Dore velvet accent chair, £230, Habitat. For similar, try Alaia nickel floor lamp, £54, Olivia's

be affected by the building work. Just before the builders started, they renovated their bedroom with new wardrobes and restored the Victorian fireplace. 'When the builders took the old kitchen ceiling down and discovered the whole house needed rewiring, I was speechless,' says Temi. 'But it was essential work, and the team was very respectful, making good all the rooms so we hardly noticed they'd been here.'

BEST LAID PLANS

When it came to the kitchen, Temi and Eugene were still one step ahead. They had layout ideas and Temi wanted a herringbone wood floor. However, choosing dramatic black cupboards was the unexpected twist. 'We weren't fans of the glossy white cabinets here before and planned to buy navy or dark green cupboards,' says Temi. 'When we saw the black kitchen in the Howdens showroom, I thought, "wow." We'd never considered black before, and from this starting point the monochrome decoration flowed throughout

▼ 'The chair is the perfect cream colour with oak wood details, and much cheaper than one I originally saw on the high street,' says Temi. 'I like how the colours balance out the dark walls, inspired by our black kitchen'



with touches of brass, gold and soft colour along the way.'

The couple's project was finished within six months. The black kitchen was such a hit, they revisited the living room and bedroom decor, painting a black feature wall in both. 'I never thought I'd be someone who'd have monochrome interiors, but we both love it,' says Temi. 'Three years of planning has been the biggest success for us. We both enjoyed learning from the builders and seeing our design come to life. I get moments when I walk in and can't believe it's our home!'



KEEN GREEN

Despite the monochrome scheme elsewhere, Temi wanted an injection of colour for the children's spaces. Green was the colour of choice alongside calming neutrals for the nursery

FAMILY BATHROOM

'For continuity, we used the same floor tile as downstairs and chose marble-effect for the walls for interest and a feeling of luxury,' Temi says

OUR MUST HAVES

Ledbury Charcoal Black tiles, £19.95 per sq m, Walls and Floors. For similar, try Place White marble effect wall tiles, £17.99 per sq m, Tile Mountain. For similar, try Industrial metal hexagonal shelf, £45, Dunelm

NURSERY

'Colour suits the kids' bright personalities, and I picked this green as I wanted a muted pastel shade that worked nicely with the neutral accents,' she explains

OUR MUST HAVES

Wall painted in matt interior paint in Green 02, £45 for 2.5L, Lick. 3D wood world map terra, from £146, Enjoy The Wood. For similar, try Kalle Kanin - Greige/Cream White rug, £78 for 100 x 160 cm, Rugvista