

I didn't want a bland and safe colour scheme

Lucy Webb stepped out of her comfort zone and tendency towards neutrals and has successfully braved colour in her maisonette



This is the first property Lucy Webb has owned – a joint purchase with husband Jamie – and the first time she's been able to properly indulge in a big decorating project. Having rented in Brighton for many years, Lucy was familiar with the area.

'Kempton is still in the city but has a community feel and is also really near the sea,' she explains. 'We quickly fell for this top-floor flat as it's over two floors and felt like a house within a house as all five rooms are spacious with huge windows. And we can just about see the sea if we stick our heads out of the living room window!'

At first the couple were happy to live with the pale-grey colour scheme as they were busy setting-up Jamie's new sports therapy clinic in Brighton. Along the way they got married and later had their daughter, Thea. Lucy began toying with the idea of decorating, but patches of damp in the stairwell raised alarm bells and were traced back to a leaky roof. An unusual discovery then ensued. 'Chunks of our bedroom wall started coming away and we discovered the walls are built with bungaroosh – a mix of pebbles, stones and sand mixed in with lime that's almost exclusive to Brighton,' says Lucy. 'The building structure is ▽



'We're really pleased with the vinyl floor, it's soft and warm underfoot and only cost £400 to buy and lay in here and the bathroom,' says Lucy. The flooring is Brighton 431967596 from Avenue of Styles Ultimate Tones Collection. The Sinnerlig bench and Masterby red foot stool are both from IKEA

COME ON IN...



Feature: Jane Crittenden Styling: Marisha Taylor Photos: James French

OUR HOME Is a two-bedroom first- and top-floor maisonette in a Victorian terrace, built in the 1880s, in Brighton, East Sussex.

I AM Lucy Webb, an interiors blogger (www.banishthebeige.co.uk), and I live here with my husband Jamie, a sports therapist (www.brightonsporttherapy.co.uk) and our daughter, Thea, two.

SHOPS I LOVE Are the second-hand and vintage stores near where I live, such as Era, Room Service and Brighton Flea Market.

I LEARNT That playing with bold colours achieves results – and to not be influenced by other people's opinions on the subject!

TO RELAX We like an afternoon curled up on the sofa together watching sport on TV – even Thea enjoys the games!

MY BEST BARGAIN Were the two bedside table lamps that cost just £19 each from HomeSense.

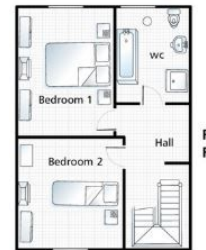
WE BOUGHT THE MAISONETTE Because we liked the big rooms and it's really close to the sea.

Good idea!
Make a striking statement with a multi-purpose black chalkboard and decorate with photos and drawings – or even the weekly shopping list.

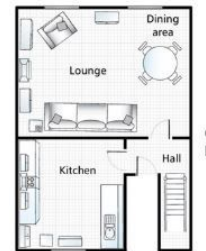
The chalkboard wall, painted in Rust-Oleum's blackboard paint from Homebase, was inspired by an Instagrammer. 'Theresa Gromski has great interior ideas and black satisfied my need for a dark colour in here,' says Lucy. The rest of the kitchen is painted in Farrow & Ball's Breakfast Room Green



★ Lucy took her cues from the existing stainless-steel splashback and fitted a spice rack and industrial-style shelf on the wall. 'We couldn't justify changing the cabinetry so I found ways to work with what we had,' she says. The vintage food tins are from Snoopers Paradise and the wooden trug is from North Road Timber and Joinery



FIRST FLOOR



GROUND FLOOR

For stockists see page 120



'Farrow & Ball's Stiffkey Blue gave me the confidence to go dark as it's not one solid colour but made-up of varying tones that look different in different lights,' says Lucy. The mirror is from Graham and Green and the vases are from Keep It Living

Good idea!
Paint lining paper with sample colours and move around the room at different times of the day to see the tone variations in natural and artificial light.

★ A circular mid-century table from Room Service doesn't impose on the room and extends when guests visit. Hix chairs are from Barker and Stonehouse. Lucy bought the vintage drawers years ago from Snoopers Paradise

★ 'I spotted the blue macramé wall hanging on Maisons du Monde's website and it's the perfect colour for our room,' says Lucy. The walls are painted in Little Greene's French Grey Mid

'The living room needed to feel cosy in the evening and not too dark in the day when the sun is pouring in – Farrow & Ball's Stiffkey Blue achieved that.'

◀ completely sound – unless water gets in to fix the leak and pump concrete into the walls for reinforcement.'

Once watertight, Lucy began making plans to decorate the living room where the family spend most of their time. One of the trickiest challenges was giving the space a different identity from day to night to accommodate multi-functional activities of relaxing, eating, playing and entertaining. The starting point was the dark and dramatic blue walls.

★ The Arlo and Jacob Baradolph sofa is an unobtrusive shape in a grey that melds into the room. Above is IKEA's Mosslanda shelf. The table lamp is from Marks & Spencer and the nest of tables were made for Lucy's dad by a friend in the 1970s

'The room had no personality and I explored different shades of navy blue, which I wrote about in my first blog post on www.banishthebeige.co.uk,' says Lucy. 'The room needed to feel cosy in the evening and not too dark in the day when the sun is pouring in – Farrow & Ball's Stiffkey Blue achieved that.'

Lucy made careful furniture choices in here too, concentrating on size, shape and comfort – then colour and design. 'The extendable round table is a practical choice and a lovely vintage piece,' says Lucy. 'The dining chairs look great in teal, but more importantly they're comfortable for guests to sit on all evening.'

Thea's bedroom leads a similar double life as the guest bedroom where the couple have fitted in a double bed as well as her cot. 'There's a lot going on in here so ▶





✦ In the main bedroom patterned wallpaper, Romo Ilsa in Mimosa W376/01 from Mister Smith Interiors, is complemented by Button & Sprung's velvet headboard and cushions from Meylor and HomeSense. The table lamp is also from HomeSense and the stool is from Era. The Nukuu frames are from Lavender Room

'I measured up to make sure I had enough wallpaper stashed away and the rest of the bedroom scheme sprang from that.'

✦ In Thea's bedroom pretty fairy lights pegged with Polaroid photos are a simple way to decorate a wall. The bed is from Dreams and the pale grey linen frill cushion is from Zara Home



Good idea!

Patterned wallpaper off-cuts from the same collection in different colourways make an affordable and pretty art arrangement.

◁ I kept the walls neutral and painted in Farrow & Ball's Elephant's Breath, which has a slight pinky tone in certain lights,' says Lucy.

In the couple's bedroom a roll of Romo wallpaper Lucy had stashed under her bed for a couple of years was finally put to use. 'I loved the blue and yellow floral pattern,' she says. 'I measured up first to make sure I bought enough rolls and the rest of the bedroom scheme sprang from that.'

In the bathroom, Lucy refreshed the paintwork and changed the flooring as over the years the lino had become ingrained with grime. 'The couple knew replacing with tiles or laying planks would have meant major work first of all to level the uneven floorboards and so a forgiving sheet of vinyl was the only answer.

'We were dubious at first as we thought it might look cheap,' admits Lucy. 'But the quality and choice of patterns were impressive – the flooring has absolutely transformed the room.'

Last on the list was the kitchen, also laid with a sheet vinyl floor, where the couple decided to keep the cupboards and worktops as they're still in good condition. Once again, colourful walls inject life into the room, and Lucy chose Farrow & Ball's Breakfast Room Green to complement the wood. 'It's a big kitchen for a flat and lovely and sunny in here,' says Lucy. 'I added an industrial shelf, artwork and painted one wall with blackboard paint to contrast with the green.'

With every inch of the maisonette now decorated and furnished to suit family life, Lucy and Jamie are really pleased with their efforts. 'The living room has made the biggest difference – Thea feels as at home in here playing with her toys as we do having friends over for dinner,' says Lucy. 'However, we're bursting at the seams so our next project is to move house again. We'd like a garden for Thea to play in and I'd like some outdoor space to tackle some creative projects.' **YH**



Thea
Painting the fireplace white draws out the period details; above the walls are painted in Farrow & Ball's Elephant's Breath. The wooden letters are all from the Lavender Rooms, as is the star on the wall. The trunk had been Lucy's mum's when she was a college student.

6 IDEAS TO STEAL



Use this self-adhesive chalkboard vinyl for an alternative if you don't fancy painting an entire wall.

Fablon chalkboard sticky back plastic, 45cm x 150cm, £10, Homebase

Copy Lucy's dark and dramatic living room walls with this affordable inky blue paint match.



GoodHome walls and ceilings wipeable paint in Venice silk emulsion, £12 for 2.5l, B&Q



Personalise your child's bedroom like Lucy has done with colourful wooden letters.

Personalised wooden name train with five letters, £16, Percy and Nell

✦ The Victorian 'bungarooth' wall structure made the couple wary of tampering with the tiles and instead they refreshed the paintwork and laid a new floor. Lucy decorated with plants from HomeSense and Sainsbury's and two fish-shaped wooden platters they'd been given as a wedding present. Similar platters can be found at Melody Maison



Display this handcrafted macramé wall hanging like Lucy has on her bedroom wall.



Macramé Bamboo round wall hanging, £18.99, JajKajHome at Etsy



Pairing teal chairs with navy walls is a winning combination in any dining room.

Eiffel-inspired teal chair, £57.99, Fusion Living

Why choose one botanical-themed artwork when you can have a complementary pair to brighten up a plain bathroom wall?



Floral art prints set, £31.99, Wayfair