

SPACE *craft*

Maximising every inch with a glamorous look has enabled Rachel Moreve to elevate this modest Victorian property into a stylish family home

WORDS JANE CRITTENDEN
PHOTOGRAPHY MALCOLM MENZIES/LIVING INSIDE
STYLING RACHEL MOREVE



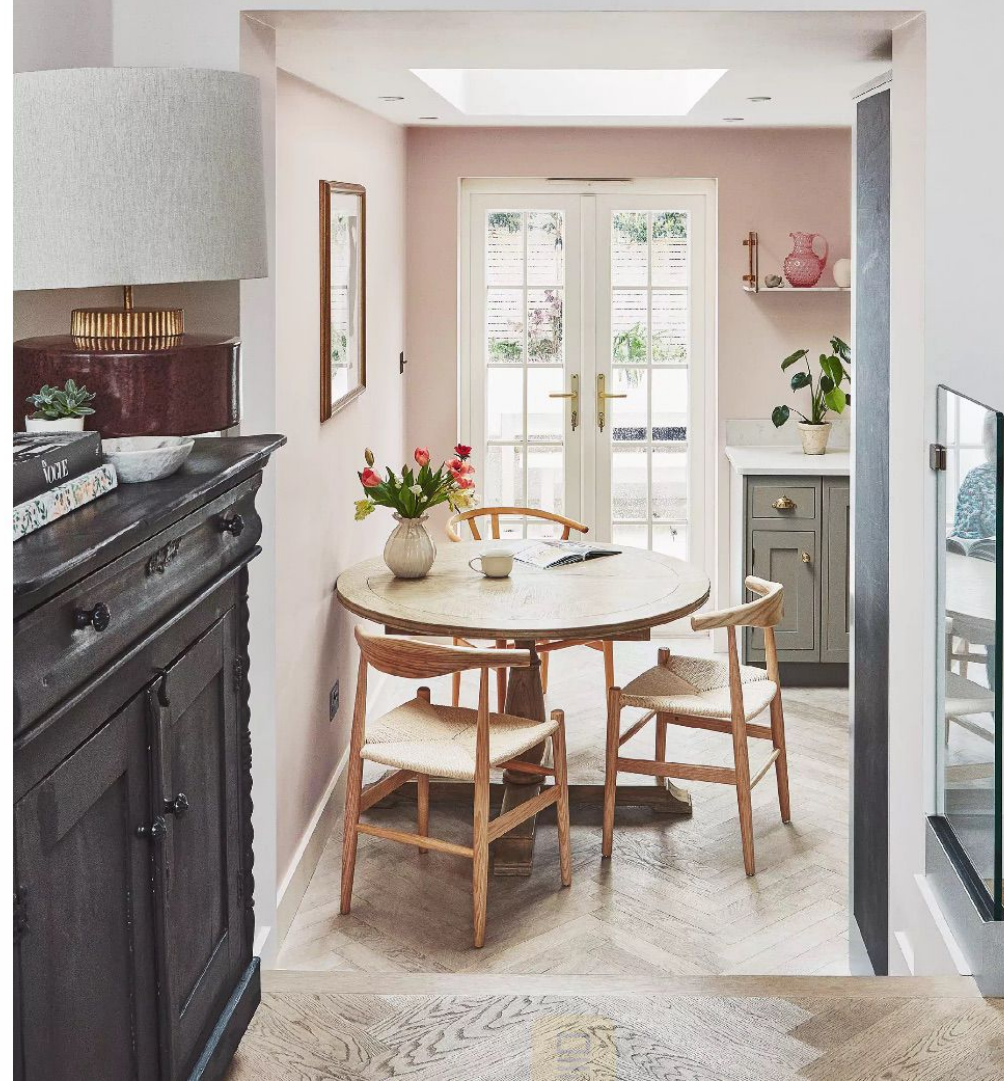
DINING AREA

The previous tiny galley kitchen was extended into the side return, creating a much larger room with space for a table and chairs. Double doors provide access to the sunny garden.
Hobnail jug (on garden table), Klimchi



DINING AREA

'Our extendable round table tucks out of the way and is where we can comfortably eat together as a family,' says Rachel. Inglesham round extending dining table, Cotswold Company at John Lewis, is similar. Odense dining chair, Where Saints Go, is a good alternative



HOME TRUTHS

THE PROPERTY

Victorian terrace

ROOMS Sitting room, kitchen/dining area, cloakroom, four bedrooms, two bathrooms

LOCATION West London



'I used a neutral colour palette throughout as pale tones are much more calming than bright hues'



KITCHEN

'Our carpenter recreated the look of high-end Shaker units for a third of the price,' says Rachel. Kitchen, Fordbrook. Perrin Rowe Mayan taps, Taps UK. Cabinet drawer pulls, Fulham Brass Online

GARDEN

'We landscaped this space into an entertaining area with lighting and an outdoor heater so we can use it all year round,' says Rachel. Bespoke Prosecco table and bench, The Table Guy



SITTING ROOM
 'Neutral furniture makes the room feel bigger,' says Rachel. 'The rechargeable wall light was a fabulous solution as we forgot to plan for wall lighting.' Laura Ashley's Vivienne silver accent chair, Next, is similar. Large Twinkly wall light, Pooky. Mobile chandelier, West Elm

When this Victorian end-of-terrace house caught the eye of interiors stylist Rachel Moreau, who was looking for her next renovation project with her husband, Guy, its relatively small footprint wasn't enough to put them off. Rachel and Guy, who have two sons, Arlo, nine and Jude, six, had previously renovated two flats in their determination to inch up west London's property ladder.

This terrace had one owner for 50 years or so and no redeeming qualities, except its location and price. 'This was definitely the ugliest house on the nicest street in a pocket of west London we really like,' says Rachel.

With lots of experience and Rachel's design eye, the couple got to work, gutting the property and extending the tiny galley kitchen into the side return. At the top of the house, they converted the loft to give themselves two extra bedrooms and a shower room.

In a bold move, Rachel also knocked down the wall between the two reception rooms – and the one in the hallway. 'I used to be an estate agent and one thing buyers tend not to like is walking straight into a sitting room,' she explains. 'However, the entrance of this house was poky and narrow and the glazed wall was the perfect solution.'

Since the family were going to stay put for a while, Rachel wanted their home to feel special. They invested in a free-standing bath and cast-iron radiators. They fitted a range cooker and opted for a handmade Shaker kitchen after a friend recommended an affordable carpenter. The sunny garden is smartly finished and now an extra 'room' with built-in seating, a built-in barbecue and pizza oven. Another success story is the bench seating in the sitting room. 'A carpenter made the storage for the boys' shoes with a little cubby hole for the dog bed,' says Rachel. 'It's long enough to seat four so when we have guests, we carry our extendable dining table up the steps and place it here – the flexible design works so well for us.'

In a bijou home like this, Rachel wanted everything to have its place and the neutral colour palette reflects this orderly environment. Rooms were decorated white when they first moved in to give Rachel time to think about colour decisions. 'We added colour over time – green tones in our bedroom, yellow and blue for the boys' room and pink in the bathroom,' she says. 'Although I love bold colour and patterns, they'd overwhelm a house like ours, so I've chosen pale tones that make everywhere feel calm.'

Most of the couple's budget was sucked up on the renovations so they shopped second-hand, finding vintage pieces at Kempton Market and bargains on Facebook Marketplace, like the free bedside tables from Loaf. 'We've used every inch and been able to elevate the look of the house and I'm really proud of what we've achieved,' says Rachel. 'We'd love to stay, but the kids are growing up and need more space and a bigger garden – it will be fun to start over with our next project.'

@rachel_moreau_styling

‘Accessories help to pull a room together and are the perfect opportunity to add pops of colour’



MAIN BEDROOM
‘Dark panelling to the ceiling has hotel vibes and gives depth to the wall,’ says Rachel.
Panelling in Down Pipe, Farrow & Ball. Coco bed, Loaf. Andal cushions, Soho Home. Apollo wall lamp, Royal Design, is similar



BATHROOM
‘This is my girly space that feels luxurious and spa-like and the panelling matches our bedroom,’ says Rachel.
Walls in Calamine, Farrow & Ball. Mr Jones blue matt patterned ceramic tiles, Walls and Floors, are similar. Egg Shell free-standing stone bath, Lusso