

| IDEAS HOME |

JOYFUL colour

NORDIC SIMPLICITY BLENDS WITH VIBRANT DÉCOR IN THE UPLIFTING HOME OF FINNISH-BORN ANNE TIAINEN-HARRIS



Living room

'I embraced the cosiness in this space with a pair of teal contemporary sofas arranged either side of the woodburner. From here, my confidence with colour began to emerge.'

BUY THE KEY PIECES

Try Henrietta sofa in Teal velvet, £699, Daals. Try Arboretum rug, from £550, John Lewis. Abrielle shade, £32, Dunelm, has this look

Living room

'This area had already been extended and skylights added. Our built-in bookcase helps to zone the space, while the natural light makes it perfect for yoga or reading.'

BUY THE KEY PIECES

Slope chair, £799, West Elm. Try Chevron cushion, £29, Home Harborough. Walls in Cornforth White modern emulsion, £63 for 2.5ltr, Farrow & Ball

SUBTLE GREY

This understated neutral brings a little more warmth and depth than pure white





HOME NOTES

WHO LIVES HERE?

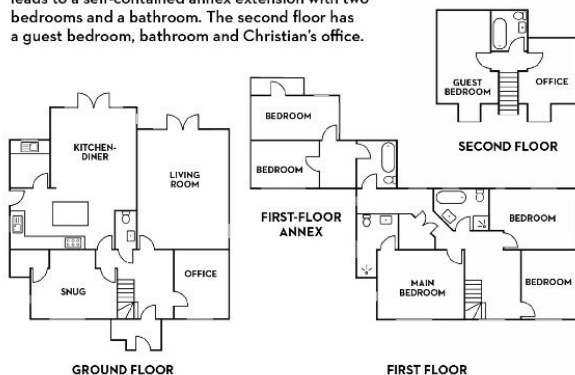
Anne Tiainen-Harris, founder of interiors store Cloudberry Living, and her husband Christian Harris live here with their daughters, Elsa, 19, and Hilda, 18.

THE PROPERTY

A six-bedroom 1920s house in Buckinghamshire.

THE LAYOUT

The front door opens into a hallway with Anne's office on the right and the snug on the left. Ahead is the living room alongside the large kitchen-diner, which both have access to the garden. There's also a WC off the hallway and a utility room in the corner of the kitchen. On the first floor are the main en-suite bedroom, two bedrooms and a bathroom; a door leads to a self-contained annex extension with two bedrooms and a bathroom. The second floor has a guest bedroom, bathroom and Christian's office.



Anne Tiainen-Harris and her husband Christian Harris wanted to move to a bigger property in the countryside near to where they were living, but didn't want to take on a building project. This newly renovated house was immaculate and ticked all the boxes, despite its lack of personality and warmth.

WHAT WERE YOUR INITIAL THOUGHTS?

'I grew up in a pared-back house in Finland so I was drawn to the white walls and hardwood floors here – a similar aesthetic and tranquil feeling of houses back home. Although I love this minimalist look, something felt missing. Christian and I are outgoing people and I wanted to express this with vibrant colour and prints without losing the sense of calm.'

WHERE DID YOU FIND INSPIRATION?

'I spent my childhood playing in the forest and by the lakes and I love having plants and wildlife motifs in my home. In my early twenties, I studied and worked in Europe and, while in the Netherlands, I connected with the quirky, joyful and refreshing fashion and interiors designs. They inspired me, but I also retained my love of Nordic simplicity – I haven't crowded rooms with too much wallpaper, art or colour.'

DID YOU STRUGGLE WITH ANY DECISIONS?

'Making the kitchen-diner come together was tricky because it's a large room and was very bland. When I chose wallpaper for the splashback, the vision began to come together. However, this left the dining area looking disjointed, so I used the same design on a dark background for the wall behind the table, which felt more glamorous and appropriate for dining.'

WHERE DO YOU LIKE TO SHOP?

'I like genuine Scandi designs, which might mean investing in a designer piece, such as a Louis Poulsen light, or buying affordable Ikea wardrobes. Other favourite Nordic brands include Borastapeter for floral wallpaper, HK Living for cushions, H&M Home for rattan and Iittala for glassware.'

WHAT HAS BEEN A SUCCESS?

'Every room has its own character, purpose and feel, all with a Scandi minimalist foundation. Wallpaper has made such a difference as it brings happiness to rooms and transports me to a different place. For now, I love all of it. Our house reflects our personalities and feels like our home – but this isn't the end, there are more ideas to come.' Follow Anne's progress on Instagram @nordiclivingincolour.

Dining area

'We chose the fabulous table to go with the light that we had saved up for and the chairs we had been given as a wedding present twenty years ago.'

BUY THE KEY PIECES

Try Jigsaw table in white-washed oak, £1,395, Loaf: Arne Jacobsen Series 7 chairs, £459 each, Heal's. Louis Poulsen Snowball light, £1,944, Inspyer Lighting

“Plenty of **WHITE** space harmonises our bolder **COLOURS** and brings a **SENSE** of calm”



HARDWOOD FLOORS

Stylish, practical and easy to keep clean, they can be brightened up with decorative rugs



Snug

'We appreciate the Nordic biophilic ethos of creating calm spaces with a connection to nature, using plants, wood and rattan details, and artwork.'

BUY THE KEY PIECES

Forest print, from £13.95, Desenio. Signatures Buisseau two-tier cane table, £149.99, La Redoute. Try Natural rattan shade, £24, Habitat



BOTANICAL WALLPAPER

Brings a fresh look to a kitchen; if used as a splashback, protect with a clear sealant

Kitchen area

'Using this striking botanical wallpaper as a splashback creates a more contemporary feel - I get so much joy from it.'

BUY THE KEY PIECES

Boråstapeter Rabarber wallpaper in Cream, £98 a roll, Wallpaper Direct. Try Hot Pink roller blind, from £8.85, Blinds Direct

FOCUS ON...

DECORATING WITH WALLPAPER

Follow Anne's tips and tricks to give your home a subtle boost of colour and pattern

FIND INSPIRATION

When browsing wallpapers, seek out themes that make you feel good. For example, if you love travel, gardening or art, these interests might lead you to certain designs or inspire your palette. Look at your clothing - which patterns or colours are you drawn to? This will steer you to the wallpaper to suit both you and your space.

LESS IS MORE

You don't have to wallpaper an entire room to make an impact. As having white space is key for

Anne to retain her home's Scandi simplicity, she used a vibrant wallpaper to highlight just one wall in her dining area and the adjoining kitchen.

MANAGING THE LOOK

Too much of the same pattern on walls and in furnishings can feel overwhelming. Anne has mixed monochrome and geometric motifs with her botanicals, picking out colours from wallpaper in accessories. Start with a small space such as a cloakroom, where you can splash out on a pricier design.

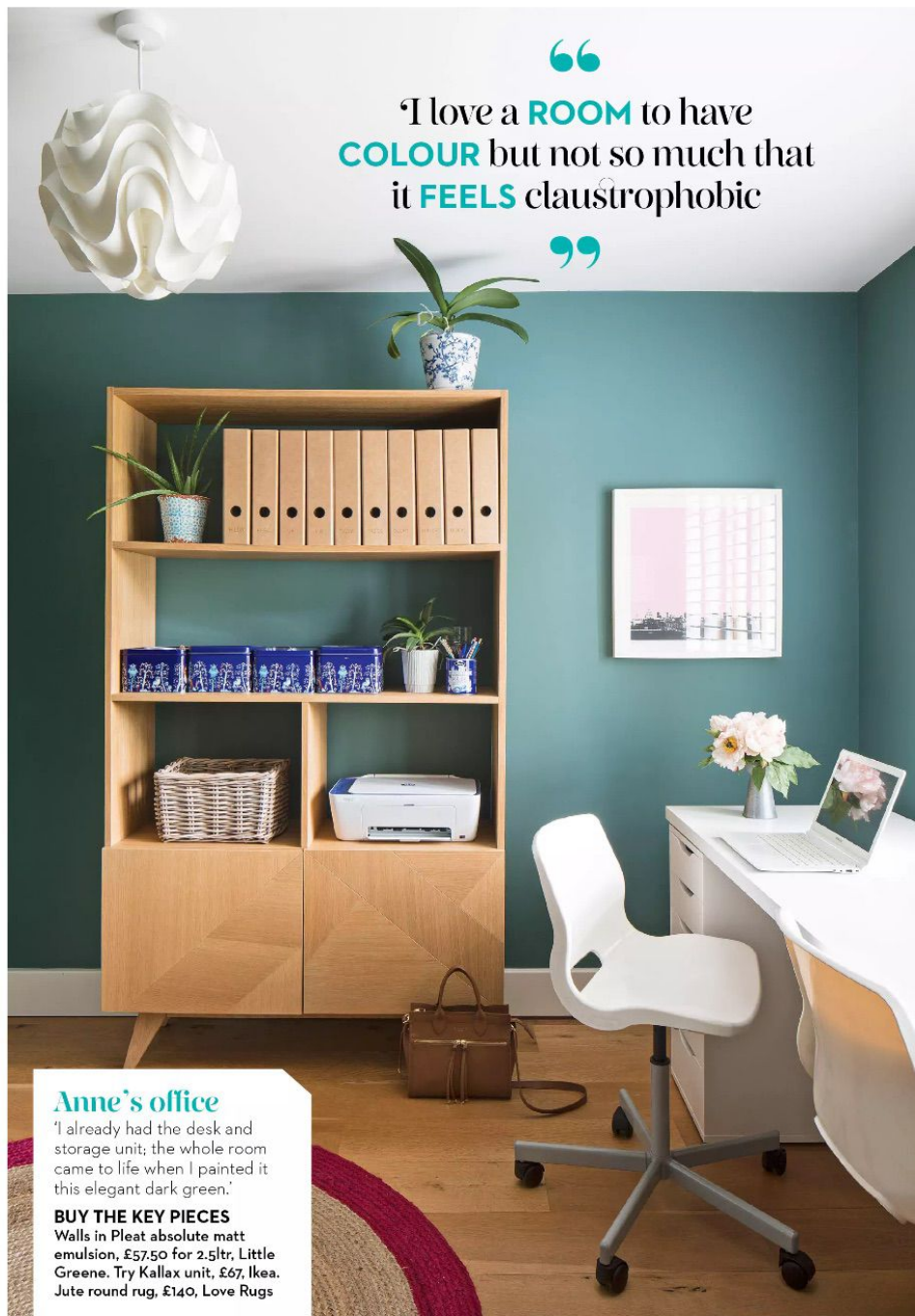


'The lush wallpaper - Rabarber in Green by Boråstapeter - brings a glamorous look to the dining area'

“

I love a **ROOM** to have
COLOUR but not so much that
it **FEELS** claustrophobic

”



Anne's office

'I already had the desk and storage unit; the whole room came to life when I painted it this elegant dark green.'

BUY THE KEY PIECES

Walls in Pleat absolute matt emulsion, £57.50 for 2.5ltr, Little Greene. Try Kallax unit, £67, Ikea. Jute round rug, £140, Love Rugs



PALE-WOOD TONES

A smooth, plain finish has the pared-back look that hits the right note for Scandi interiors

Annex bedroom

'I wanted a light, airy Nordic look for this room with a copper touch from the picture frame to create a luxurious feel. The solid-birch bed frame sums up the modern Scandi look I love.'

BUY THE KEY PIECES

Try Björksnas bed, £450; Norraker bench, £65, both Ikea. Walls in Duck Egg matt emulsion, £44 for 2.5ltr, Laura Ashley at B&Q



Main bedroom

'I customised our Ikea wardrobes with bespoke doors and painted them in Brinjal by Farrow & Ball in contrast to our turquoise bed.'

BUY THE KEY PIECES

Pax wardrobe, from £204, Ikea.
Elegance door, from £266, Noremax.
Arthur bed, £1,499, Living It Up

Annex en suite

'I carried the fresh Nordic colour palette through from the annex bedroom, with a copper-tone splashback and blue-green tiles.'

BUY THE KEY PIECES

Try Copper laminate splashwall, £159 for 600 x 2440mm, B&Q. Lily Pad porcelain tiles in Peacock, £85.08sq m, Ca Pietra. Nissedal mirror, £22, Ikea

FEATURE JANE CRITTENDEN PHOTOGRAPHS JAMES FRENCH
STYLING MARISHA TAYLOR PLANS PAULA JARDINE

NATURAL TOUCH

Mushroom rattan ceiling shade, £89.25, Where Saints Go



PATTERN ENERGY

Monochrome Stripe velvet cushion, £75, Rockett St George



STYLE MUST-HAVES

INSPIRED BY ANNE AND CHRISTIAN'S HOME

NORDIC VIBES

Snowy Birch Forest poster, £10.95, Poster Store



LEARNING CURVE

Hinnerup coffee table, £149.99, Jysk



COLOUR SPLASH

Squishmeister sofa in Sopping Seagrass clever velvet, £1,545, Loaf



MODERN FLORAL

Paige wallpaper in White, £79 a roll, Bobbi Beck

