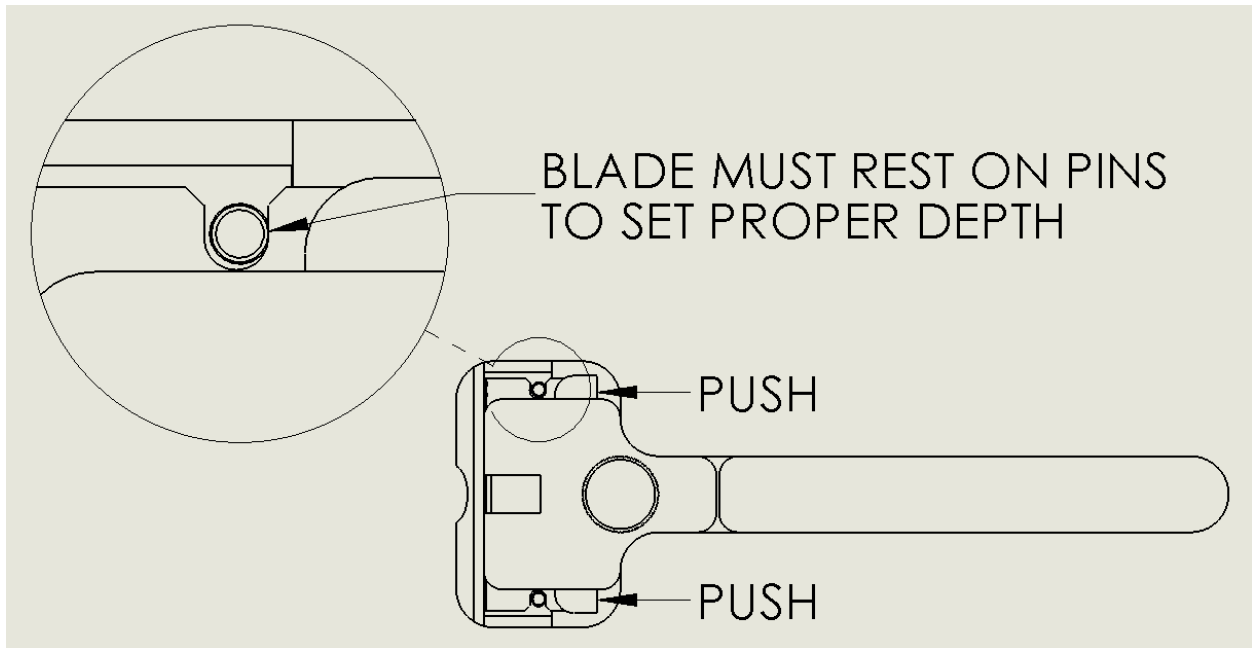
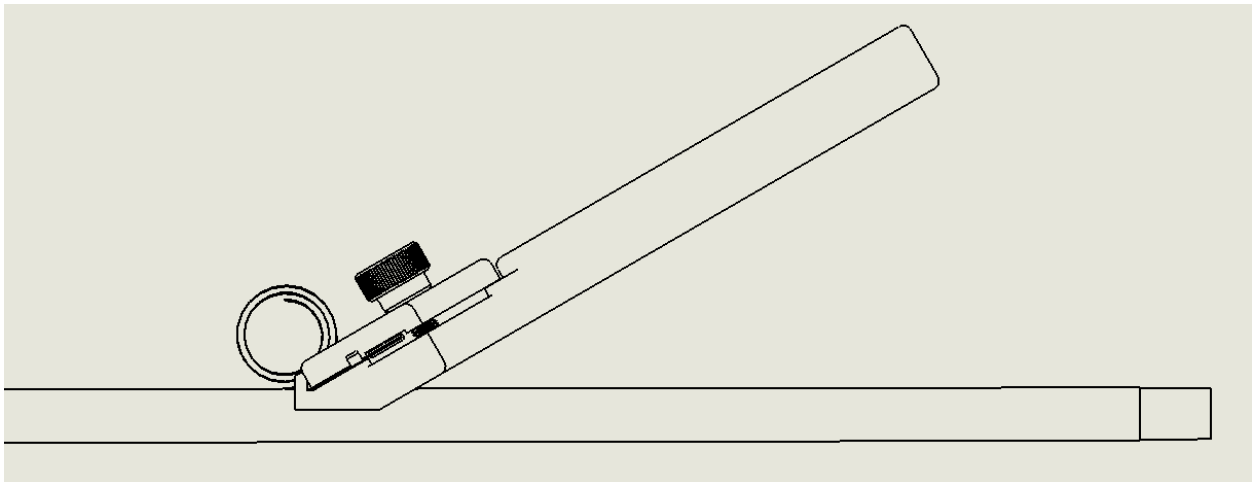


FEPeeler Tips

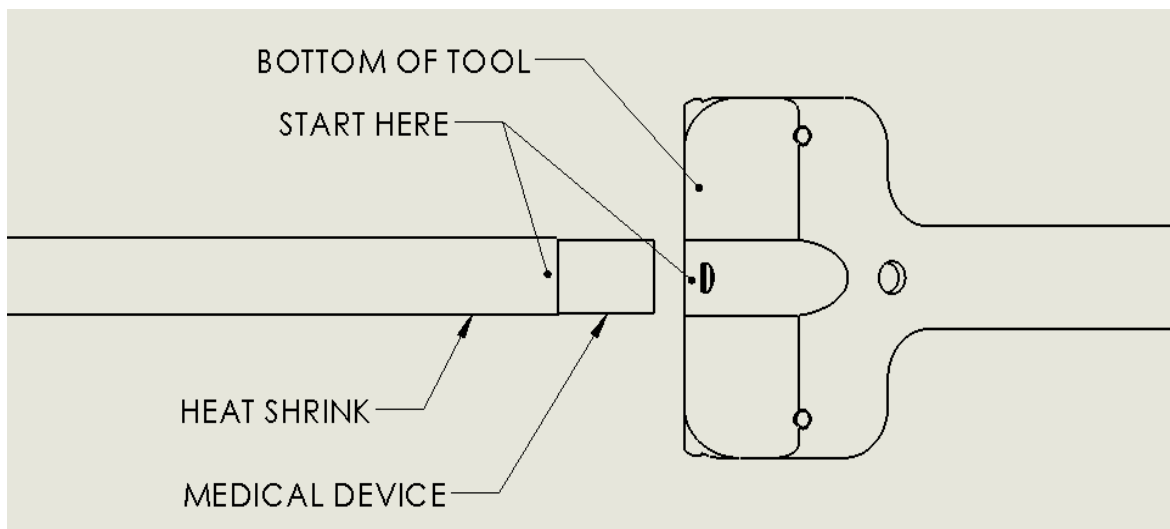
1. This tool was designed to use GEM 3 facet blades. You may notice some blade length variation which will affect the skiving depth. Each pack of blades should be checked to make sure they are not too long and damage your parts. They will need to be adjusted with the provided shims. **We offer a tight-tolerance version of the GEM 3 facet blade (stainless, stainless backer, washed and degreased) which is guaranteed to maintain a length tolerance of +/- .001. This will guarantee that your tool will work the same between blade orders that come from different batches.**
2. Blade must be pushed toward the front of the tool to rest on the pins (see below) while tightening the cover screw. This exposes the max amount of the blade and is how the tool is setup. The failure mode of the tool is such that customer product will not be damaged by an incorrectly loaded blade.



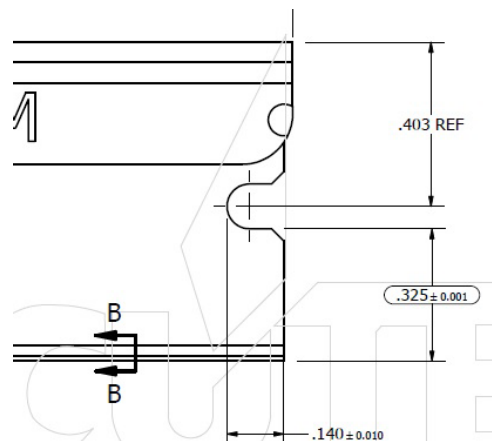
3. Tool must be level to the product being skived as shown below. Rocking the angle of the handle up and down will help you find the correct angle where the part is making contact along the entire surface of the skiver.



4. The FEPeeler can start from the middle or edge of a part.
5. **DO NOT ADD/REMOVE SHIMS.** The tool is setup for the range of part + heat shrink OD laser marked on the bottom. Different diameters **DO NOT** require tool adjustments. If the tool is not working, see troubleshooting below.
6. To start anywhere along the length, gently place the tool on the heat shrink , make sure it is level (channel is parallel with the device) and guide it down the length of the product on the heat shrink that needs to be removed. **DO NOT PUSH DOWN.** Pushing down can damage the part and or the blade. The tool will grab the heat shrink, there is no need to “dive” the tool into the part. This also may damage the blade and or part being skived.
7. Starting from the edge takes a bit of practice getting familiar with the tool geometry. Just place the landing in front of the blade on the heat shrink (see below), the blade will be off the heat shrink. Keeping tool level, start the skive. It will leave a tiny connected portion that is easily broken.



Check your blade length (.325 Dimension)



Trouble Shooting

1. Tool will not skive at all.
 - a. Make sure cover is tightened with the blade pushed forward to rest on the pins.
 - b. Check for debris under the blade or in the blade area (skiving channel)
 - c. Make sure you are using GEM 3 fact blades. Other blades may not hold the same tolerance and dimensions as GEM. Measure your blades and compare the .325 dimension on previous sheet.
2. Tool is difficult to start a skive:
 - a. Make sure the skive channel is parallel to the device so the blade is in contact with the heat shrink.
 - b. Check the blade for damage if the blade is damaged it will skive in chunks and be difficult to start a skive. Replace the blade.
 - c. Make sure you are using GEM 3 fact blades. Other blades may not hold the same tolerance and dimensions as GEM. Measure your blades and compare the .325 dimension on previous sheet.
3. I'm seeing skive marks on my parts.
 - a. Be sure not to push down on the skiver or dive in to start. The exposed blade should be less than the thickness of your heat shrink and if used properly it will not damage your part.
 - b. Check for missing shims under the blade.
 - c. Make sure you are using GEM 3 fact blades. Other blades may not hold the same tolerance and dimensions as GEM. Measure your blades and compare the .325 dimension on previous sheet.
4. My tool is not cutting all the way thru the heat shrink. It removes a strip but is not cutting through.
 - a. Make sure cover is tightened with the blade pushed forward to rest on the pins.
 - b. Look under the blade to make sure there is no debris. If your skiver is doing this, the debris will be small.
 - c. The FEPeeler is setup to remove .006-.012" wall thickness heat shrink. If you are using thicker heat shrink and it is not cutting thru, you will need one setup with a deeper cut.
 - d. Make sure you are using GEM 3 fact blades. Other blades may not hold the same tolerance and dimensions as GEM. Measure your blades and compare the .325 dimension on previous sheet.

Satisfaction Guaranteed

The FEPeeler comes with a 30 day satisfaction guarantee. If you are not happy with the function within 30 days, return it for a refund of the full price of the tool (less shipping).

Lifetime Warranty

We will rework or replace the tool at no cost if it stops working beyond the 30 days. All you pay is shipping.