



"THINKING INSIDE THE SQUARE"



SHADECUBE™ PERGOLAS THINKING INSIDE THE SQUARE

Our SHADECUBE™ Pergola system makes building your dream oasis a snap!
The possibilities are endless, limited only by your imagination. Simple and easy to follow instructions.

Super easy DIY or we can create it all. (Average build time for a standard SHADECUBE is around 3-4 hours). T5 3mm wall, 6005A Structural Aluminum Cubejoiners with exterior powder coat paint finish. welded joints for precision and strength. 100% manufactured in Australia.

Complies to Australian Standards: -
AS1170.0 | AS1664.1 Class 10a | AS/NZ1170.1-2002 | AS/NZ1170.2-2011. Wind load Certification to 176 kmh. (Structure).

A building permit or approval may be required in your area. Please check with your local government authority.
SHADECUBE™ Cubejoiners are designed to be used with 90 X 90 timber, or our exclusive 6005A T3, structural Aluminum Woodgrain or Powder coated Posts & Beams.

We have on offer Retractable Sunshade retractable Roof Coverings. Sunscreen Pull Down Blinds and Aluminium Side Screening. These are available as standard extras.

SHADECUBE™ Has Endless Design Configurations - Square, Rectangle, "L" Shape, "U" Shape, Handrail, Screening And Much More



OUR SHADECUBE™ PERGOLA SYSTEM MAKES BUILDING YOUR DREAM OASIS A SNAP!



10 Year Warranty On Shadecube Structure / 3 Year On Retractable Roof

Shadecube™ 2465 High - Complete Kits (DIY)

Woodgrain Powder Coat Finish

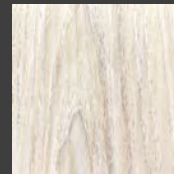
Size: 2600 x 2600	Complete kit with roof
Size: 3200 x 3200	Complete kit with roof
Size: 3800 x 3800	Complete kit with roof
Size: 4700 x 4700	Complete kit with roof
Size: 6400 x 3200	(Double) complete kit with 2 roofs
Size: 7500 x 3200	(Double) complete kit with 2 roofs

Standard Powder Coat Finish

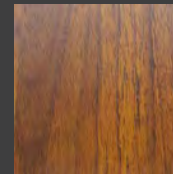
Size: 2600 x 2600	Complete kit with roof
Size: 3200 x 3200	Complete kit with roof
Size: 3800 x 3800	Complete kit with roof
Size: 4700 x 4700	Complete kit with roof
Size: 6400 x 3200	(Double) Complete kit with 2 roofs
Size: 7500 x 3200	(Double) Complete kit with 2 roofs

Specifications May Change / Delivery Extra

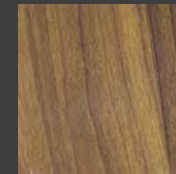
Woodgrain Powder Coat Finish



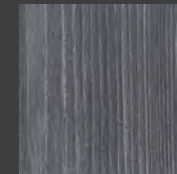
Gumbo



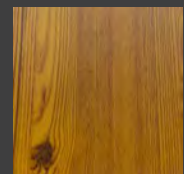
Rimu



Atlantic
Cedar

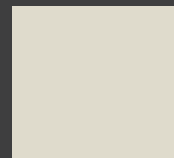


Silver Ash



Honey
Willow

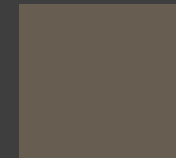
Standard Powder Coat Finish



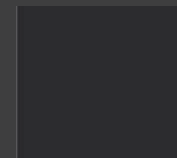
Surfmist



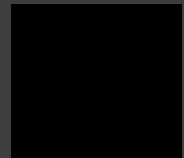
Paperbark



Jasper



Monument



Black

OUR SHADECUBE™ PERGOLA SYSTEM MAKES BUILDING YOUR DREAM OASIS A SNAP!



CLIP-ON 316 STAINLESS HARDWARE

Please Visit Our Website To View The
Complete CUBEJOIN RANGE
www.shadecube.com.au

Shadecube™ Cubejoins

(Custom Colours Are Available)

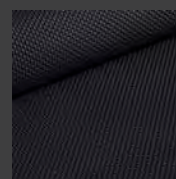
DUO	Black Two Way Bracket	
TRINE	Black Three Way Bracket	
OMNI	Black Four Way Bracket	

(Custom Colours Are Available)

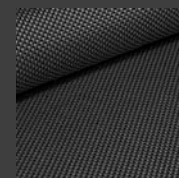
BASE	Black Post & Wall Bracket	
L & T	Black One Way Bracket	
CONNEX	Black Floating Bracket	

STANDARD CUBEJOIN KIT ONLY (4 X DUO - 4 X BASE)

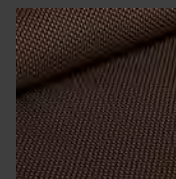
Shadecube™ Retractable Colour Samples



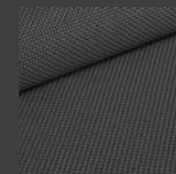
Flint



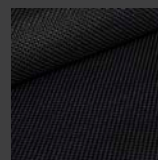
Moonlight



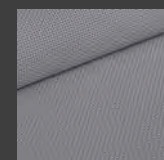
Mocha



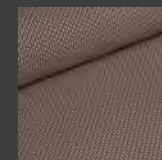
Basalt



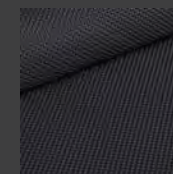
Blackstone



Platinum



Alpacha



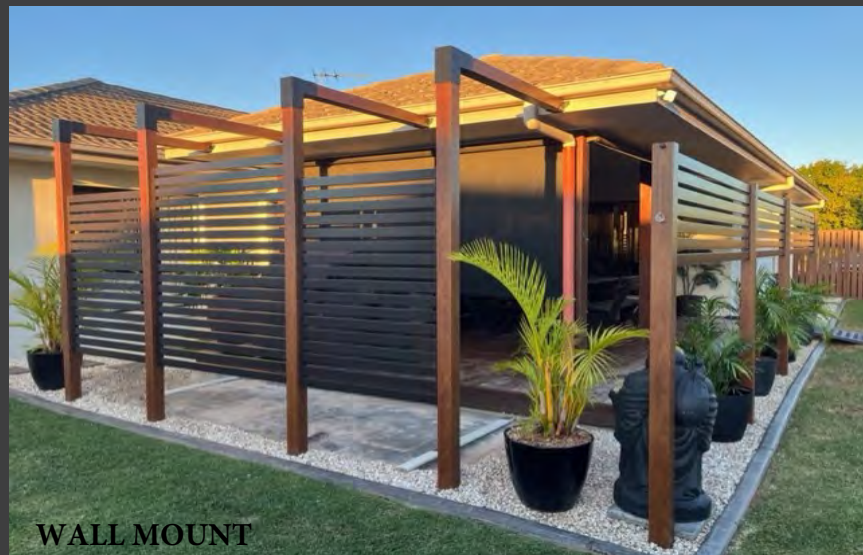
Monument



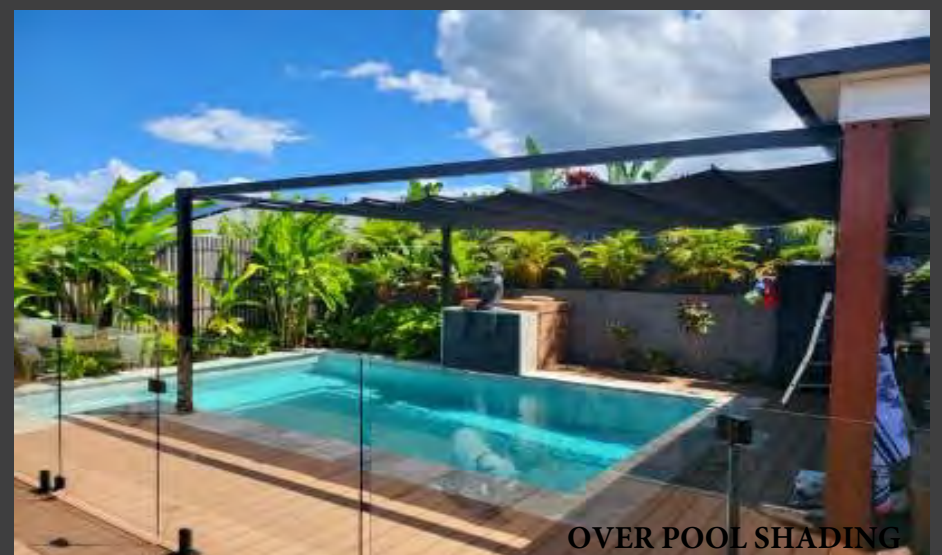
HEMLOCK WOODGRAIN



DOUBLE SHADECUBE



WALL MOUNT



OVER POOL SHADING



SHADECUBE™ Pergola systems - Proudly Designed & Manufactured By Ubuild Modular Pergolas

Unit 3 / 6 Expansion St, Molendinar, Qld, 4214 - Ph 1300 996 902

info@shadecube.com.au - www.shadecube.com.au





IMPORTANT NOTICE

1. UBUILD Modular Pergolas are not designed or manufactured to be installed as structural / load bearing products, used as a platform to be climbed, a structure to support any other product that is not supplied or manufactured by UBUILD MODULAR PERGOLAS, and if installed or used in this manner UBUILD Modular Pergolas are not warranted or liable to any damage or incursions made.
2. UBUILD Modular Pergolas are not to be constructed as a structural or load bearing product, and if installed or used in this manner UBUILD Modular Pergolas are not warranted or liable to any damage or incursions made. The Retractable roof does not form any part of the certified structure. We recommend the Roof is open during adverse weather.
3. UBUILD Modular Pergolas Aluminium structures are design certified and wind classed to an ultimate wind speed of 176kms per hour. Please check with your local Government Authority to determine if building approval or a permit is required.
4. UBUILD Modular Pergolas, as outlined in points 1, 2 and 3, and as such due to the nature of the product, fixed / permanent coverings added by the end user cannot be included and warranted under the warranty by UBUILD MODULAR PERGOLAS. This type of additional installation methods does not form part of a UBUILD Modular Pergola. Any installation of this nature during or after the initial installation voids the product warranty and installation warranty and remains the client's sole responsibility to potential product liabilities. The maximum beam span without an intermediate post is 4500mm.
5. UBUILD Modular Pergolas, as quoted are inclusions of product items for that defined installation based on information put forward by the end user. It is the end user's responsibility to ensure that all products manufactured and supplied by UBUILD MODULAR PERGOLAS are suitable for their property or usage. By purchasing any UBUILD MODULAR PERGOLA (SHADECUBE, CUBEJOIN OR RETRACTAROOOF), the purchaser must agree to all of the warranty and Inclusion/ Exclusion disclaimers as specified in our Sales Agreement. An order placed, will be an acceptance of all terms and conditions. (A paid deposit or signed sales agreement is classed as acceptance)





IMPORTANT NOTICE (Continued)

6. The Shadecube Retractable roof does not form any part of the certified structure. The Retractable roof has a separate warranty. We recommend the roof is open during adverse weather conditions.
7. If your Shadecube structure is to be installed near or within a body of water, such as a swimming pool, spa pool or swim spa it may be subject to Electrical bonding. Please obtain expert advice from a licensed electrical contractor. This scope of works is not included. Manufacture lead times are approximate only and can change due to circumstances beyond Ubuild Modular Pergolas control. All lead times quoted or implied may change.
8. All manufacture lead times quoted or implied, may change due to raw material shortages or delays.
9. Please download and read all the installation instructions from our website, and make sure you understand all procedures. Failure to install our products correctly could cause personal injury or property damage.
10. Regular maintenance of our products is important to keep the Shadecube structure or Retractable roof in good working order for many years.
11. All specifications, finishes and prices are subject to change.

