

Funding Vision

Private Capital Access for Serious Operators

PRESENTED BY

Consultaa

Unlocking Capital

The Roadblocks You Face

- Banks demand perfect financials you don't have yet
- Traditional lenders move too slow for your timeline
- Equity funds want too much control of your deal
- You're stuck between debt and equity with no middle ground

There's a better way forward.



We Connect Experienced Operators with International Private Capital

BOUTIQUE ADVISORY

Specializing in \$10M–\$500M mandates with personalized attention

GLOBAL ACCESS

Direct connections to family offices, private lenders, and institutional capital across continents

CREATIVE STRUCTURING

We structure solutions where traditional finance fails—not just broker deals



Is this you?



✓ EXPERIENCED DEVELOPER OR OPERATOR

You have a proven track record
and operational expertise

✓ DEAL SIZE: \$10M–\$500M

Your project requires significant
capital deployment

✓ NEED FLEXIBLE CAPITAL

Debt, equity, or hybrid structures
that fit your deal

✓ TRADITIONAL BANKS SAID "NO"

Or they're moving too slow for your
timeline and opportunity

✓ READY TO MOVE

You're serious, prepared, and
committed to execution

If you checked 3 or more, keep reading.

How We Work: A-Z in 10 Simple Steps

Our process is designed for transparency and efficiency. From initial review to funding, we guide you through every stage with clarity and expertise.

1

Initial Review

Send us your deck or executive summary for preliminary assessment

2

Due Diligence Checklist

We review financials and deal structure for capital readiness

3

NDA Execution

Optional, but available for your protection

4

Pathway Selection

Choose your capital route (see next slide)

5

Mandate Letter

Non-binding authorization for us to represent your interests

6

Consulting Agreement

We negotiate terms together ensuring mutual alignment

7

Intro Call

Meet our primary consultant and discuss strategy in depth

8

Agreement Execution

Sign engagement documents and process initial fees if applicable

9

Capital Hunt

We connect you with the right capital sources from our network

10

Funding

From term sheet to legal documentation to capital disbursement

Transparent. Simple. Effective.

Choose Your Capital Pathway

Our approach blends strategic insight, creative execution, and data-driven optimization — tailored specifically for growing businesses.

Feature	Fast Track	No Upfront
Engagement Fee	\$35K–\$70K upfront	\$0 upfront
Success Fee	3–5%	2–3%
Due Diligence Costs	Lower (back-end)	Higher (\$150K–\$300K+)
Timeline	30–90 days	90–180 days
Capital Type	International private	US institutional
Best For	Speed & flexibility	Budget-conscious upfront

We're flexible. You choose what works for you.

Fast Track: For Operators Who Need Speed

ENGAGEMENT FEE

\$35K–\$70K upfront (non-refundable) to activate our network immediately

SUCCESS FEE

3–5% of funded amount, aligned with your successful closing

TIMELINE

30–90 days from mandate execution to capital funding

DUE DILIGENCE

Lower back-end costs with streamlined international processes

CAPITAL NETWORK

International private capital—family offices, private lenders, flexible structures

IDEAL CLIENT

Experienced operators who value speed, flexibility, and creative capital solutions

Ready to move fast? Let's talk.

No Upfront: For Budget-Conscious Operators

Zero Initial Investment

Engagement Fee: \$0 upfront —we only get paid when you do

Shared Success Model

Success Fee: 2–3% split with advisor, ensuring aligned incentives

Patient Timeline

Duration: 90–180 days from mandate to funding completion

Investment Requirements

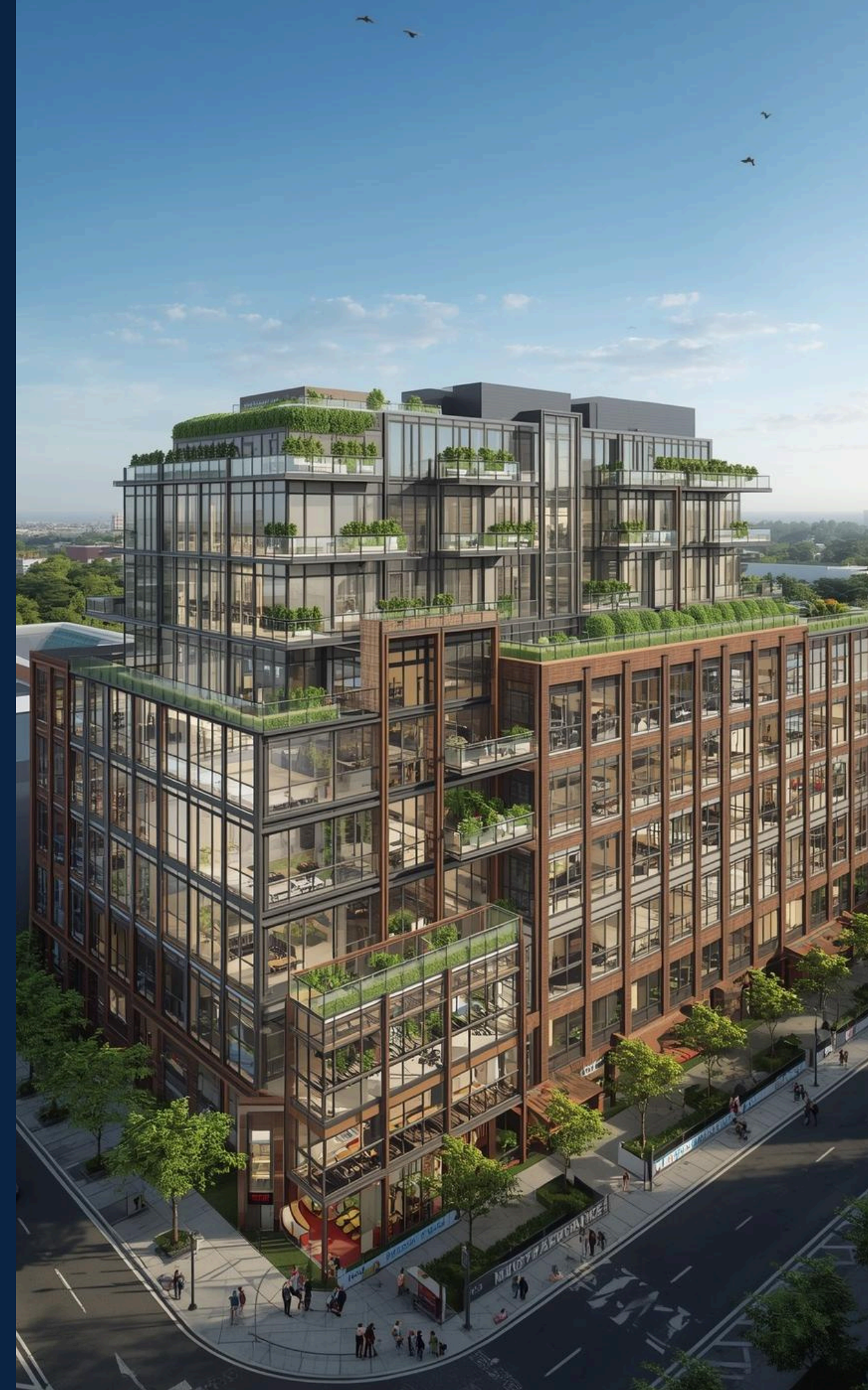
Due Diligence: Higher back-end costs ranging from \$150K–\$300K+ for comprehensive institutional review processes

Capital Sources: US-based institutional capital including equity funds, debt providers, and hybrid structures

Perfect For

Clients with upfront budget constraints who can afford extended timelines and absorb heavier due diligence expenses. Ideal for operators seeking institutional capital relationships.

Prefer no upfront cost? Let's talk.



Why work with us?

Our approach combines flexibility, transparency, and results. We've structured this partnership to align our success directly with yours.

CLIENT-CENTRIC

We meet you halfway and adapt to your specific needs, timeline, and constraints

FLEXIBLE

Two pathways, multiple capital sources, creative structures for complex deals

GLOBAL NETWORK

Access to capital sources you simply can't find on your own or through traditional channels

Your Success Is Our Success.

TRANSPARENT

No hidden fees, no surprises—just honest conversations and clear agreements

EXPERIENCED

We've successfully facilitated \$10M–\$500M deals across multiple asset classes

WIN-WIN FOCUS

We only succeed when you do—our incentives are completely aligned with your success





We're Here to Help, Not Hype

- We don't waste your time with deals that won't close
- We're upfront about what's realistic and what's not
- We'll tell you if we're not the right fit
- Open communication is everything—tell us your concerns, and we'll address them

HONEST. DIRECT. RESULTS-DRIVEN

Ready to Get Started?

STEP 1: SEND US YOUR EXECUTIVE SUMMARY OR PITCH DECK

STEP 2: WE'LL REVIEW AND SCHEDULE A QUICK INTRO CALL

STEP 3: CHOOSE YOUR PATHWAY AND LET'S MOVE FORWARD

LET'S TURN YOUR VISION INTO FUNDED REALITY.

Where Others See Risk, We See Opportunity

\$10M-\$500M PRIVATE CAPITAL FOR SERIOUS OPERATORS

LET'S TALK.



PARAG KUNDALWAL

Founder & CEO | Consultaa
+971 58 596 4631 | parag@consultaadxb.com
www.linkedin.com/in/paragkundalwal



ADAM CARSWELL

Business Dev & Investor Relations | Consultaa
+1 650 396-9363 | adam@carswell.io
www.linkedin.com/in/ixcarswell/



consulta.

ENRICHING REAL ESTATE & FINANCIAL CONSULTING

WWW.CONSULTAADXB.COM