

Perkins County Senior Center News

420 Central Avenue

PO Box 314

Grant, NE 69140

308-352-4236 Grant

Perkins County Public Transit 308-352-4597

www.pcsenior.org

pcsenior@gpcom.net

February

2019

Executive Director:

Trish Jimenez

Lead Cook:

Lisa Resor

Kitchen Staff:

Joyce Hightower

Kelan Sis

Housekeeping:

Jasmine Schulze

Board Members:

Kris Jaques

Nancie Peterson

Marian Robertson

Joyce Hightower

Dan Wallin

Katy Miyamoto

Juan Bazan

Bus Driver:

DeAnna Schulze

Kris Jaques

Ronda Hutt



The Perkins County Senior Centers are sponsored by West Central Area Agency on Aging, (WCAAA) which provides partial funding for meal programs and related activities. The Centers are a non-profit organization operating under a 501c3 tax exempt status. The purpose is to provide a nutritious meal and countless hours of activities and entertainment Monday ~ Friday 9 am to 4 pm. For person 60 years of age and older the suggested contribution rate is \$4.50 per meal, guests under 60 will be charge \$6.00. Home delivery is calculated according, adding \$.25.

Thank you to the Local Businesses who Sponsor Perkins County Senior Centers

Grant

Adams Bank & Trust

Birthday Cakes - Grant

Pinnacle Bank

Birthday Meals - Grant

Valley Bank & Trust

Anniversary Meals - Grant

Grant Tribune Sentinel

Newspaper - Grant

United Methodist Church

Postage for Bulk Mailers

Hatch's Super Foods

Kitchen Supplies - Grant Donations for Fund
Raisers

Madrid

Adams Bank & Trust

Village of Madrid

Elsie

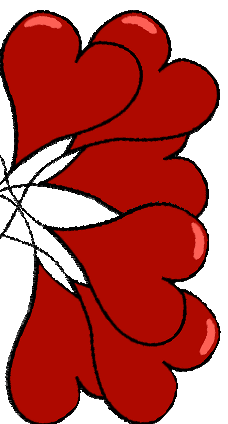
Hi Line Coop

Sandhills State Bank

Venango



Activity Calendar



February, 2019

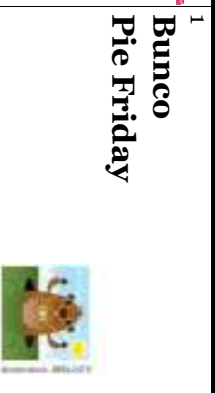
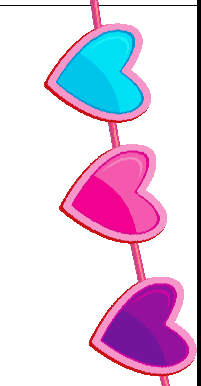
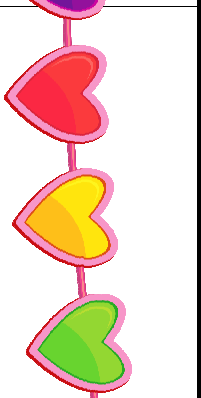
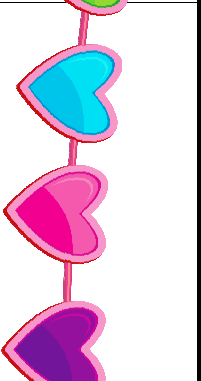
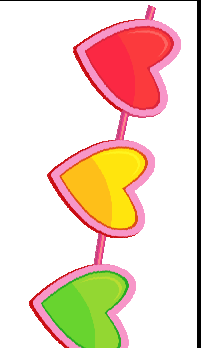
Monday

Tuesday

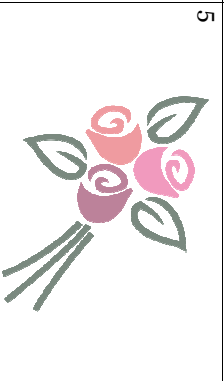
Wednesday

Thursday

Friday



4
8:30 Board Meeting
10:30 TS Meeting
1:00 Card Party



6
Rotary Program 12:30



8
Bunco
Birthday Dinner

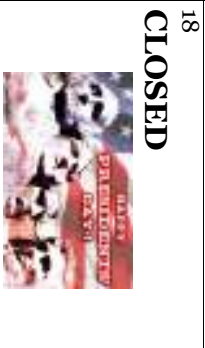


12
12:00 - Madrid Meal

13
Rotary Program 12:30
Foot Clinic 12:00



15
Bunco
Anniversary Dinner



19
Bingo - 12:30

20
Rotary Program 12:30

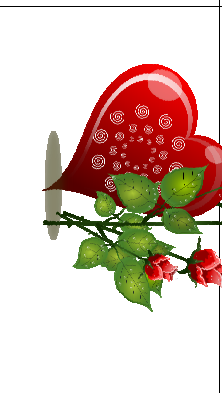
21
Chamber - 12:00

22
Bunco
Pie Friday

25
Popcorn & A Movie
(see pg. 7)

26
12:00 - Madrid Meal

27
Rotary Program 12:30



Grant Senior Center Menu

February, 2019

(Menu subject to change)

Mon	Tues	Weds	Thurs	Fri	1
				Chicken Cordon Bleu Hash Brown Pattie Corn Pie	
4	5	6	7	Birthday	8
Philly Cheese Steak Sloppy Joe Tater Tots Green Beans Dessert	Rainbow Stew Cheese Melt Fresh Veggies Dessert	Oven Fried Chicken Mashed Potato Gravy Green Beans Bread, Dessert	Fish Baked Potato Oriental Veggies Bread Dessert	Spinach Alfredo Casserole Fresh Veggies Bread Birthday Cake	
11	Madrid Meal 12	13	14	Anniversary	15
Chicken Spaghetti Corn Bread Dessert	Runza Beets Dessert	Ham Hash Brown Casserole Peas Bread Dessert	Calzones Fresh Veggies Dessert	Meatballs Mashed Potato Winter Blend Veggies Roll Anniversary Cake	
18	19	20	21	22	
CLOSED 	Ham Corn Chowder Ham Salad Fresh Veggies Dessert	Roast Beef Baked Potato Mixed Veggies Bread Dessert	Oven Fried Chicken Mashed Potato Gravy Peas Bread, Dessert	Enchilada Casserole Carrots/Celery Bread Pie	
25	Madrid Meal 26	27	28		
Hamburger Gravy Mashed Potato Green Beans Bread Dessert	Chicken Stroganoff Carrots Bread Dessert	Mushroom Pork Chop Mashed Potato Gravy Corn Bread, Dessert	Pop Over Pizza Fresh Veggies Dessert		

Salad Bar Available Daily

Suggested Contribution 60+ or spouse - \$4.50

Under 60 - \$6.00

SWEETS FOR YOUR SWEETHEART

The Senior Center will be selling a

wonderful selection of Homemade

Valentine's Day Cookies on

Saturday, February 2nd

9:00 am - 1:00 pm

Perkins County Senior Center

420 Central Avenue

\$6.00 per dozen

Boxed and Ready for your Valentine!!

The Thrift Shoppe will be OPEN too!!

The Thrift Shoppe will be OPEN too!!



MEDICARE AND DURABLE MEDICAL EQUIPMENT

Medicare covers Durable Medical Equipment (DME) to treat certain illnesses, injuries, or conditions when requirements are met. Determining what part of Medicare will pay for the equipment and how much it pays will depend on where you live, the type of DME you need, and what type of provider you use.

Medicare usually covers Durable Medical Equipment if the equipment is likely to last for three years or more, serves a medical purpose, and is appropriate for use in the home. Examples include wheelchairs, portable oxygen equipment and hospital beds.

Medicare may also cover prosthetics, orthotics and some non-reusable supplies used with DME, such as medications used with a nebulizer or test strips used with self-testing diabetes equipment.

Don't fall for the unsolicited calls you get offering free back and knee braces. You may not get what you really need because your doctor is not involved and Medicare may end up paying for something that is not really needed.

You can call the Nebraska SHIIP if you have any questions or need help with the appeal process. **1-800-234-7119**

POPCORN AND A MOVIE

MONDAY, FEBRUARY 25TH - 1:00 PM

We will be showing the movie

"Book Club" on

Monday, February 25th at 12:30 p.m.

Book Club is a 2018 American romantic comedy. It stars Diane Keaton, Jane Fonda, Candice Bergen, and Mary Steenburgen as four friends who read *Fifty Shades of Grey* as part of their monthly book club, and subsequently begin to change how they view their personal relationships.

BINGO!!

**Tuesday, January
15th**

**Bingo will be held on
the 3rd Tuesday of the
month at 12:30 p.m.,
come on down and
enjoy!!!**

**FREE to play!!! Lots
of FUN prizes!!!**

BINGO

♦ Mark your calendar!!

♠ Card Party will be
held at 1pm on
Monday

♥ February 4th

♣ Everyone is invited!!



BUNCO

Every Friday before
lunch!!

Come & Join in
on the Fun!!



February Birthdays

1st	Larry Harger Jose Perez Kathy Sperling	14th	Linda Stasis David Peterson
2nd	Gary Benge	16th	Loretta Armbruster
5th	Helen Hagan	20th	Gloria Niblack
6th	Garvin McClenahan	23rd	Don Johnson
9th	Ron Patrick	24th	Rose Barry
13th	Clifford Colglazier	26th	Joyce Hightower

Craft Day Thursday, February 28th 10:30 am

This month we will be making a St. Patrick's Day Craft. The cost is \$4.00 per person and will pay for all supplies that will be needed. There will be a sign up sheet at the front desk, or you can call at 308-352-4236 by Tuesday, February 26th.



The Thrift Shop is

OPEN

Normal Business Hours are:

Saturday, February 2nd 9am - 1pm,

(1st Saturday of the Month)

Mondays 1 - 4pm and

Tuesday thru Friday 9am - 4pm

Lots of WINTER Clothing and Household Items!!

♥ Valentine's Day ♥

S Y L W J C K Z U H T C V T B
Y R F A H F U K M A A H F O L
C M R P C X W P H O E O C L X
B C C A N D Y A I T X C Q L N
X G B S Y Q V E V D V O C U O
S W E E T H E A R T F L T S H
S D T A I R F W L L N A C E U
Z E D R H R O O O E Q T O S G
F U Y U V R V C U Q N E X S S
R H D R R E E G T K I T K I D
I T Q A Y M F G C G P C I K M
E M X A S L W S F G H S H N U
N H E A R T S L V U W P K B E
D U A X Y F L O W E R S T C D
S N K S D K K X F L B C M F C

1. VALENTINE
2. CANDY
3. CHOCOLATE
4. CUPID
5. FLOWERS
6. FRIENDS



7. SWEETHEART
8. ARROW
9. KISSES
10. LOVE
11. HEARTS
12. HUGS

December Volunteers

We Couldn't Do It Without YOU!! Great Job!!

Center

Deb Cornelius	18 Hours
Barb Kirkpatrick	10.5 Hours
Nancie Peterson	4 Hours
David Peterson	3 Hours
DeAnn Zwickl	2.5 Hours
Jasmine Schulze	2 Hours
Reenie Mercier	1 Hour
Ellen Gillett	.5 Hours

Thrift Shoppe

Barb Van Horn	23.5 Hours
Cindy Salsman	19 Hours
Garnett Templeton	17.5 Hours
Jean Gregg	17.5 Hours
Lois Gaston	15 Hours
Joyce Hightower	14.5 Hours
Pat Wilson	14 Hours
Pauline Zwick	14 Hours
Lou Tietjen	14 Hours
Doris Olsen	12.5 Hours
Lorryley Rice	12 Hours
Pat Schipper	11 Hours
Carolyn McArtor	10.5 Hours
Joyce Mannhalter	10.5 Hours
Charlotte Kumor	10.5 Hours
Kay Benge	9.5 Hours
Diana Tate	9.5 Hours
Alice Tines	9 Hours

**That's a Total of
315 Volunteer
Hours in the
Month of December!!**

Deb Hansen	9 Hours
Roxie Lampmann	7 Hours
Betty Thomas	7 Hours
Norma Hamm	7 Hours
Virginia Deaver	7 Hours
Donna Lundvall	6 Hours
Rubydell Bogaert	6 Hours



Venango

Please watch for NEWS about the Venango meal site in upcoming newsletters, Facebook, the newspaper and at www.pcsenior.org.

Lunch in Madrid!!

Join us for lunch in Madrid on Tuesday, February 12th and 26th at 12:00 noon at the Madrid Community Center.

Please RSVP to Nancie Peterson at 308-326-4292 by 12 noon the day before.

