

Faith In Action Newsletter

Vol. 23 No.1 Published by Faith in Action in
Red Wing

August 2022

Director's Muses

New Kid on the Block



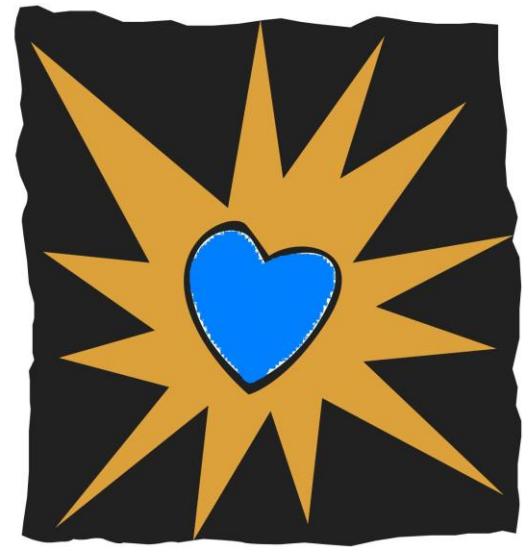
Hi folks! My name is Katherine Bonine and I am the new Executive Director for Faith in Action! I thought I would share a little about myself for the inquiring minds. My husband and I and our two children have lived here in Red Wing since 2015. I am originally from southern CA, but Jim Maybach, the Acting Director, assures me no one will hold that against me. *fingers crossed* We stumbled upon Red Wing by happy accident or rather a happy blessing. We love to say we live in a real life Stars Hollow (Any other Gilmore Girls fans out there?). Here in Red Wing, we have found our church family at St. John's Lutheran Church and our son attends school there as well. Our daughter will be old enough to start preschool in the fall. My husband is the Sous Chef at The Scarlet Kitchen & Bar in the St. James Hotel and now I finally get to work in town also! I am excited to establish new programs for our recipients as well as revitalize some of our previous programs that have fallen to the wayside due to COVID. But first we need more volunteers! So that will be my first task! I plan on making the rounds to all the churches who will have me. I am so excited to get to know all our volunteers, recipients and supporters. If you are ever near our office stop in and say hi! I would love to chat with you.

A Cry for Help!

Volunteers Desperately Needed!

In the month of June we provided 162 rides to individuals needing to attend important doctor's appointments, grocery shop to have food in their place of residence, or to the beauty salon to assist in their mental health. We did all of this with around 60 volunteers. We are currently having to ask our recipients to give us a larger time frame of notice for rides so we can fill those needs. We have even had to turn some people down. If you think you'd be interested in a very easy, fun and meaningful

"Faith is not complacent; Faith is action. You don't have faith and wait. When you have faith you move!"
-Betty Eadie



FAITH
IN ACTION

Faith in Action Board and Staff

Board Members

Wendy Erickson – President
Mary Roskam – Vice President
Laura Lutjen – Treasurer
Carol Andersen – Secretary
Elaine Beech
Verna Fricke
Doris Wenzel
Ben Stephani
David Tincher
Dave Larson

Staff Members

Katherine Bonine – Director

Don Tomczik – Transportation
Dispatcher

Diane Ringeisen & Gwen
Krehbiel – Office Assistant/
Transportation Dispatcher

Grant Opportunity!

Matching Funds Can Multiply Your Donation

Faith in Action in Red Wing is planning to upgrade its voice and digital communication systems and the software we use to keep track of our volunteers, recipients, and the quantity and nature of the services that are provided to people each month. Plans include enabling remote access to our computers, installation of security measures that prevent malicious access to our data, improvement of satellite cell phone signal strength in the office, the purchase of a laptop computer for the Director, the upgrading of our office phones so that they can perform basic office phone functions (if we have unintentionally hung up on you the need for this is apparent to you)

Staff Shout Outs!

Meet The People Who Keep Us Going!

Meet Don and Diane! Don has worked for Faith in Action for 14 years and Diane has worked with us for 8 years. When you call Faith in Action these are the people who answer your phone calls and work tirelessly to get you a driver, visitor or person to bring you your library books. On top of that Diane also does administrative duties that are invaluable to the work we do. Don was a high school teacher here in town for many years and was also a CNA for 25 years. Diane retired in 2012 and loves being a grandma and GiGi. Without these two our recipients would not be able to

and access to an improved software program. The program is able to notify volunteers by email of new needs for help that have come in and will keep both volunteers and recipients advised of any changes in schedule. A generous donor has offered to match funds that you donate in response to these needs. All donations we receive within forty-five days of the date of this newsletter up to \$6000.00 will be doubled by the matching donor. Would you please enable us to double your generosity by sending in a donation?" Now you can donate online using your debit or credit card. Go to our website www.faithinactionredwing.org and click on the donations tab.

get to important appointments. Thank you, Don and Diane, for all you do for Faith in Action and our Red Wing community.



**"I like making new acquaintances in Red Wing and it is gratifying to me to be able to help people."
-Volunteer**

Local History Tidbits!

With Jim Maybach



Excerpts from: Johnson, Frederick. "King Wheat in Southeastern Minnesota." MNopedia, Minnesota Historical Society.
<http://www.mnopedia.org/event/king-wheat-southeastern-minnesota>



This late 1860s photograph shows barges along Red Wing's Mississippi River waterfront awaiting wheat for shipment to customers downriver.

Goodhue, along with seven other southeastern counties, led the way in MN wheat production and sales in the territorial and early MN statehood periods. Minnesota's southern Mississippi River towns serving these "wheat counties" became shipment centers. In 1860, Winona shipped a million bushels of wheat. Hastings shipped 600,000. Red Wing, moving up fast, exported 350,000. Goodhue County became the state leader in wheat production

and shipment by 1872. By 1873 Red Wing held the title as the world's largest primary wheat market. The city exported 1.8 million bushels, valued at more than two million dollars.

With numbers like these, Red Wing bankers, merchants, lawyers, and assorted entrepreneurs turned to the lucrative grain business. The city was awash with wheat and cash. Merchant Theodore Sheldon became perhaps the city's wealthiest man when he shifted to banking and grain buying. City business leaders built the St. James Hotel in 1875 to handle the influx of business-related customer traffic. Theodore Sheldon's elevator along the Duluth, Red Wing & Southern Railroad helped create the village of Goodhue.

The "King Wheat" era didn't last in Minnesota's once-booming, southeastern wheat-producing counties. A *St. Paul Pioneer Press* report on July 21, 1878 noted numerous samples of wheat from all parts of Goodhue County showing heavy blight called wheat rust. A week later the *Pioneer Press* spoke of a general failure in the wheat crop in southeastern Minnesota and northern Iowa. The rust disease prompted diversification among farm operations into malting barley and dairying and by the end of the 19th Century, Red Wing had forever lost its wheat shipping prominence.

The St. Paul railroad man, [James J. Hill](#), the "Empire Builder," provided a suitable epitaph for the King Wheat years around Red Wing. In a January 1897 address to the Minnesota Historical Society he noted that Red Wing's status as "the largest primary wheat market in the world had passed away." He added that farmers around the city "are doing other and better things."

**"I strongly recommend
volunteering. It will
improve your quality of
life as much as theirs."
-Volunteer**

Why Faith in Action In Red Wing?

by Jim Maybach

Recently Jim was approached by some of our supporters who mentioned that they had been reading about Faith in Action and that they no longer wanted to support us because we stood for some things they could not get behind. The following is a response to this discussion based on research Jim has done on our organization name and others who might share the name but not our goals. – Note from Katherine

Our organization was formed in 1998 in response to a state-requested assessment of unmet needs in Goodhue County. The most prominent need found was for transportation services.

Together with Goodhue County our founder, Lee Neste, was able to create a local, independent non-profit organization to meet that need. It was funded in its first year only with the help of a grant from the Robert Wood Johnson Foundation. The foundation has funded a number of other Faith in Action (FIA) organizations in Minnesota and in other states, all of which are independently governed by their own board of directors. There is also a loose national organization that facilitates collaboration between FIA organizations started by Robert Wood Johnson. The goals of all of these organizations are to facilitate independent living for local individuals through a collaboration of local faith based organizations.

In recent years another national organization has begun to call itself Faith in Action. The goals of the other "FIA" are quite different from ours and we have nothing in common with them.

We have a monopoly on the name of our organization in Red Wing and we continue to use it to make clear that your donations to Faith in Action in Red Wing are used only locally and under the leadership of a team that is focused on the needs of the people of Red Wing.

Volunteer Recognition!

David & Patti Fredrickson



Recently, I had the pleasure of speaking at First Covenant Church in Red Wing. Many of our volunteers as well as some of our board members attend church there. While chatting with some of their members, I was able to meet David and Patti. They both volunteer in our transportation program. They mentioned how they had a heart for this kind of service to the community and could see such a need for the programs we provide. When they heard that we only had one current volunteer to do friendly visits they both stopped me and asked that their names be added to that list. The love they have for God shines through them in their willingness to serve others in their community! Thank you, David and Patti! You are truly appreciated!

Our Mission –

To enrich our residents' lives through faith based volunteer efforts